



# DRILL STEM TEST REPORT

## FLUID SUMMARY

F.G.Holl Company L.L.C.

7-30s-13w Barber

9431 East Central Suite 100  
Wichita, Kansas 67206-2563

Bell "A" #1-7

Job Ticket: 15864

DST#: 6

ATTN: Rene Husted

Test Start: 2012.02.13 @ 08:30:00

### Mud and Cushion Information

Mud Type: Gel Chem  
Mud Weight: 9.00 lb/gal  
Viscosity: 57.00 sec/qt  
Water Loss: 8.80 in<sup>3</sup>  
Resistivity: ohm.m  
Salinity: 4000.00 ppm  
Filter Cake: 1.00 inches

Cushion Type:  
Cushion Length: ft  
Cushion Volume: bbl  
Gas Cushion Type:  
Gas Cushion Pressure: psig

Oil API: deg API  
Water Salinity: ppm

### Recovery Information

Recovery Table

Length ft	Description	Volume bbl
40.00	Muddy Water 20%Mud 80%Water	0.197
240.00	Slightly muddy water	2.091
0.00	5%Mud 95% Water	0.000
980.00	Water Chlorides 54000	13.747
0.00	Resistivity .19 @62 Degrees	0.000

Total Length: 1260.00 ft      Total Volume: 16.035 bbl

Num Fluid Samples: 0

Num Gas Bombs: 0

Serial #:

Laboratory Name:

Laboratory Location:

Recovery Comments:



# DRILL STEM TEST REPORT

**TOOL DIAGRAM**

F.G.Holl Company L.L.C.

**7-30s-13w Barber**

9431 East Central Suite 100  
Wichita, Kansas 67206-2563

**Bell "A" #1-7**

Job Ticket: 15864

**DST#: 6**

ATTN: Rene Husted

Test Start: 2012.02.13 @ 08:30:00

## Tool Information

Drill Pipe:	Length: 4397.00 ft	Diameter: 3.80 inches	Volume: 61.68 bbl	Tool Weight: 2000.00 lb
Heavy Wt. Pipe:	Length: ft	Diameter: inches	Volume: - bbl	Weight set on Packer: 20000.00 lb
Drill Collar:	Length: 180.00 ft	Diameter: 2.25 inches	Volume: 0.89 bbl	Weight to Pull Loose: 95000.00 lb
			<u>Total Volume: - bbl</u>	Tool Chased 0.00 ft
Drill Pipe Above KB:	30.00 ft			String Weight: Initial 72000.00 lb
Depth to Top Packer:	4575.00 ft			Final 80000.00 lb
Depth to Bottom Packer:	ft			
Interval between Packers:	23.00 ft			
Tool Length:	51.00 ft			
Number of Packers:	2	Diameter: 6.75 inches		

Tool Comments:

Tool Description	Length (ft)	Serial No.	Position	Depth (ft)	Accum. Lengths
Shut-In Tool	5.00			4552.00	
Hydraulic Tool	5.00			4557.00	
Jars	6.00			4563.00	
Safety Joint	2.00			4565.00	
Packer	5.00			4570.00	28.00 Bottom Of Top Packer
Packer	5.00			4575.00	
Anchor	18.00			4593.00	
Recorder	1.00	8400	Inside	4594.00	
Recorder	1.00	8405	Outside	4595.00	
Bull Plug	3.00			4598.00	23.00 Bottom Packers & Anchor
<b>Total Tool Length:</b>	<b>51.00</b>				



# DRILL STEM TEST REPORT

F.G.Holl Company L.L.C.

**7-30s-13w Barber**

9431 East Central Suite 100  
Wichita, Kansas 67206-2563

**Bell "A" #1-7**

Job Ticket: 15864

**DST#: 6**

ATTN: Rene Husted

Test Start: 2012.02.13 @ 08:30:00

## GENERAL INFORMATION:

Formation: **Simpson**

Deviated: No Whipstock: ft (KB)

Time Tool Opened: 00:00:00

Time Test Ended: 00:00:00

Test Type: Conventional Bottom Hole (Initial)

Tester: Gene Budig

Unit No: 3335-52

**Interval: 4575.00 ft (KB) To 4598.00 ft (KB) (TVD)**

Reference Elevations: 1855.00 ft (KB)

Total Depth: 4598.00 ft (KB) (TVD)

1842.00 ft (CF)

Hole Diameter: 7.88 inches Hole Condition: Fair

KB to GR/CF: 13.00 ft

**Serial #: 8400 Inside**

Press @ Run Depth: 1127.65 psig @ 4594.00 ft (KB)

Capacity: 5000.00 psig

Start Date: 2012.02.14

End Date:

2012.02.14

Last Calib.: 2012.02.14

Start Time: 08:30:00

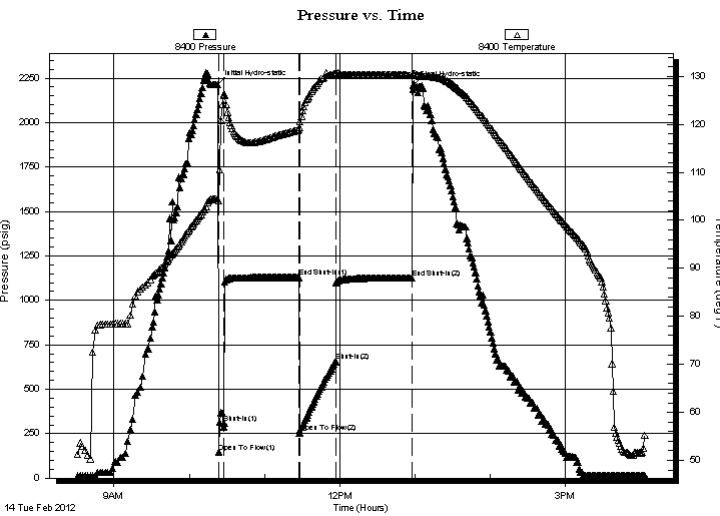
End Time:

16:04:00

Time On Btm: 2012.02.14 @ 10:22:30

Time Off Btm: 2012.02.14 @ 12:59:00

**TEST COMMENT:** 1st Opening 5 Minutes Fair blow built to the bottom of a 5 gallon bucket in 3 minutes  
1st Shut-In 60 Minutes-fair blow back  
2nd Opening 30 Minutes-Good blow built to the bottom of a 5 gallon bucket in 2 minutes  
2nd Shut-In 60 Minutes-Fair blow back



## PRESSURE SUMMARY

Time (Min.)	Pressure (psig)	Temp (deg F)	Annotation
0	2213.63	104.52	Initial Hydro-static
1	147.31	104.14	Open To Flow (1)
6	307.85	126.11	Shut-In(1)
65	1129.70	118.83	End Shut-In(1)
66	255.64	119.30	Open To Flow (2)
95	657.55	130.61	Shut-In(2)
156	1127.65	130.20	End Shut-In(2)
157	2207.78	130.58	Final Hydro-static

## Recovery

Length (ft)	Description	Volume (bbl)
40.00	Muddy Water 20%Mud 80%Water	0.20
240.00	Slightly muddy w ater	2.09
0.00	5%Mud 95% Water	0.00
980.00	Water Chlorides 54000	13.75
0.00	Resisitvity .19 @62 Degrees	0.00

## Gas Rates

Choke (inches)	Pressure (psig)	Gas Rate (Mcf/d)



# DRILL STEM TEST REPORT

F.G.Holl Company L.L.C.

**7-30s-13w Barber**

9431 East Central Suite 100  
Wichita, Kansas 67206-2563

**Bell "A" #1-7**

Job Ticket: 15864

**DST#: 6**

ATTN: Rene Husted

Test Start: 2012.02.13 @ 08:30:00

## GENERAL INFORMATION:

Formation: **Simpson**

Deviated: No Whipstock: ft (KB)

Time Tool Opened: 00:00:00

Time Test Ended: 00:00:00

Test Type: Conventional Bottom Hole (Initial)

Tester: Gene Budig

Unit No: 3335-52

**Interval: 4575.00 ft (KB) To 4598.00 ft (KB) (TVD)**

Reference Elevations: 1855.00 ft (KB)

Total Depth: 4598.00 ft (KB) (TVD)

1842.00 ft (CF)

Hole Diameter: 7.88 inches Hole Condition: Fair

KB to GR/CF: 13.00 ft

**Serial #: 8405 Outside**

Press @ Run Depth: 1127.21 psig @ 4595.00 ft (KB)

Capacity: 5000.00 psig

Start Date: 2012.02.14

End Date:

2012.02.14

Last Calib.:

2012.02.14

Start Time: 08:30:00

End Time:

16:03:00

Time On Btm:

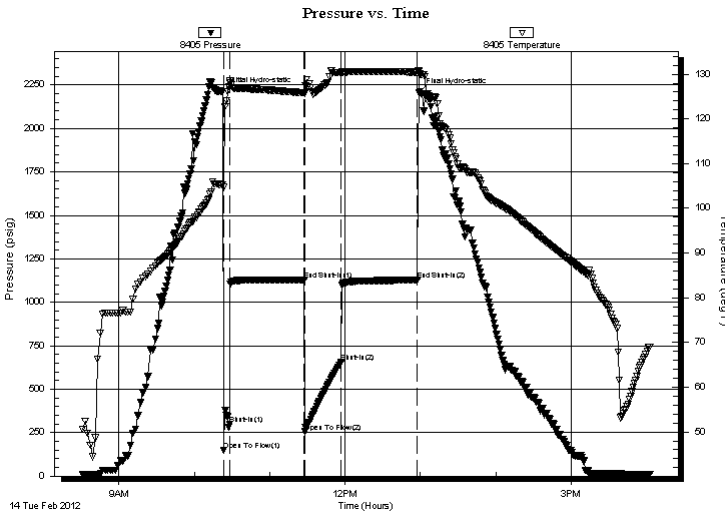
2012.02.14 @ 10:22:30

Time Off Btm:

2012.02.14 @ 12:59:00

**TEST COMMENT:** 1st Opening 5 Minutes Fair blow built to the bottom of a 5 gallon bucket in 3 minutes  
1st Shut-In 60 Minutes-fair blow back  
2nd Opening 30 Minutes-Good blow built to the bottom of a 5 gallon bucket in 2 minutes  
2nd Shut-In 60 Minutes-Fair blow back

## PRESSURE SUMMARY



Time (Min.)	Pressure (psig)	Temp (deg F)	Annotation
0	2212.04	105.24	Initial Hydro-static
1	150.45	104.72	Open To Flow (1)
6	298.52	127.98	Shut-In(1)
65	1129.34	125.83	End Shut-In(1)
66	254.90	125.58	Open To Flow (2)
95	656.49	130.30	Shut-In(2)
155	1127.21	130.41	End Shut-In(2)
157	2206.46	130.09	Final Hydro-static

## Recovery

Length (ft)	Description	Volume (bbl)
40.00	Muddy Water 20%Mud 80%Water	0.20
240.00	Slightly muddy w ater	2.09
0.00	5%Mud 95% Water	0.00
980.00	Water Chlorides 54000	13.75
0.00	Resisitvity .19 @62 Degrees	0.00

## Gas Rates

Choke (inches)	Pressure (psig)	Gas Rate (Mcf/d)



## DRILL STEM TEST REPORT

Prepared For: **F.G.Holl Company L.L.C.**

9431 East Central Suite 100  
Wichita, Kansas 67206-2563

ATTN: Rene Husted

### **Bell "A" #1-7**

#### **7-30s-13w Barber**

Start Date: 2012.02.13 @ 08:30:00

End Date: 2012.02.13 @ 00:00:00

Job Ticket #: 15864                      DST #: 6

Superior Testers Enterprises LLC  
PO Box 138 Great Bend KS 67530  
1-800-792-6902

Printed: 2012.02.14 @ 02:06:10