



DRILL STEM TEST REPORT

Prepared For: **Trans Pacific Oil Corp.**

100 South Main Suite 200
Wichita, Kansas
67202+3735

ATTN: Bryce Bidleman

Leiker B 1-13

13/15S/18W Ellis Co.

Start Date: 2012.02.08 @ 04:53:00

End Date: 2012.02.08 @ 13:29:00

Job Ticket #: 18833 DST #: 3

Superior Testers Enterprises LLC
PO Box 138 Great Bend KS 67530
1-800-792-6902

Printed: 2012.02.08 @ 23:45:21



DRILL STEM TEST REPORT

Trans Pacific Oil Corp.
 100 South Main Suite 200
 Wichita, Kansas
 67202+3735
 ATTN: Bryce Bidleman

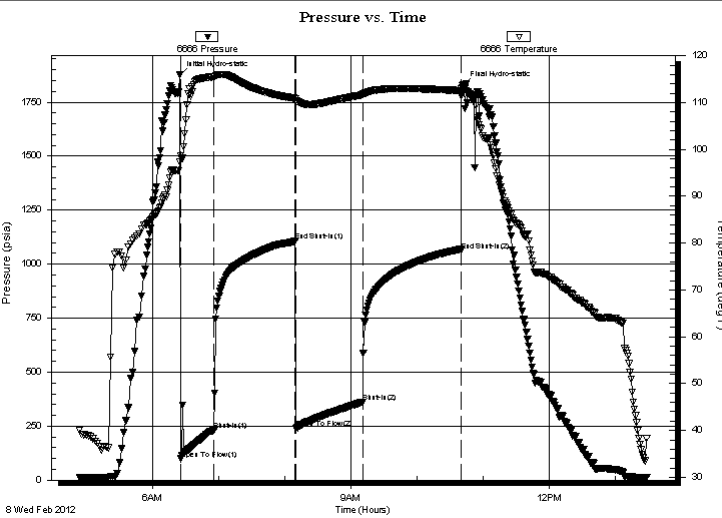
13/15S/18W Ellis Co.
Leiker B 1-13
 Job Ticket: 18833 **DST#: 3**
 Test Start: 2012.02.08 @ 04:53:00

GENERAL INFORMATION:

Formation: **Arbuckle**
 Deviated: No Whipstock: ft (KB)
 Test Type: Conventional Bottom Hole (Initial)
 Time Tool Opened: 06:25:30 Tester: Dylan E Ellis
 Time Test Ended: 13:29:00 Unit No: 3345/Great Bend/110
Interval: 3528.00 ft (KB) To 3589.00 ft (KB) (TVD)
 Reference Elevations: 2009.00 ft (KB)
 Total Depth: 3589.00 ft (KB) (TVD) 2004.00 ft (CF)
 Hole Diameter: 7.88 inches Hole Condition: Fair KB to GR/CF: 5.00 ft

Serial #: 6666 Outside
 Press @ Run Depth: 362.35 psia @ 3585.48 ft (KB) Capacity: 5000.00 psia
 Start Date: 2012.02.08 End Date: 2012.02.08 Last Calib.: 2012.02.08
 Start Time: 04:53:00 End Time: 13:29:00 Time On Btm: 2012.02.08 @ 06:24:30
 Time Off Btm: 2012.02.08 @ 10:41:30

TEST COMMENT: 1ST Opening 30 Minutes fair building blow /blow blew to bottom of bucket in 8 minutes
 1ST Shut-In 75 Minutes yes blow back/surface
 2ND Opening 60 Minutes steady building blow /blow blew to bottom of bucket in 5 minutes
 2ND Shut-In 90 Minutes yes blow back/



PRESSURE SUMMARY

Time (Min.)	Pressure (psia)	Temp (deg F)	Annotation
0	1874.80	97.30	Initial Hydro-static
1	98.21	98.66	Open To Flow (1)
32	231.69	115.51	Shut-In(1)
105	1106.61	110.90	End Shut-In(1)
106	240.41	110.49	Open To Flow (2)
167	362.35	111.67	Shut-In(2)
256	1063.08	112.58	End Shut-In(2)
257	1825.28	113.12	Final Hydro-static

Recovery

Length (ft)	Description	Volume (bbl)
630.00	Clean Gassy Oil	8.84
0.00	85% Oil 15% Gas	0.00
252.00	Oil cut Gassy Mud	3.53
0.00	10% Oil 15% Gas 75% Mud	0.00
0.00	126' Gas in the pipe	0.00
0.00	Gravity of Oil corrected w as 35	0.00

Gas Rates

Choke (inches)	Pressure (psia)	Gas Rate (Mcf/d)



DRILL STEM TEST REPORT

Trans Pacific Oil Corp.
 100 South Main Suite 200
 Wichita, Kansas
 67202+3735
 ATTN: Bryce Bidleman

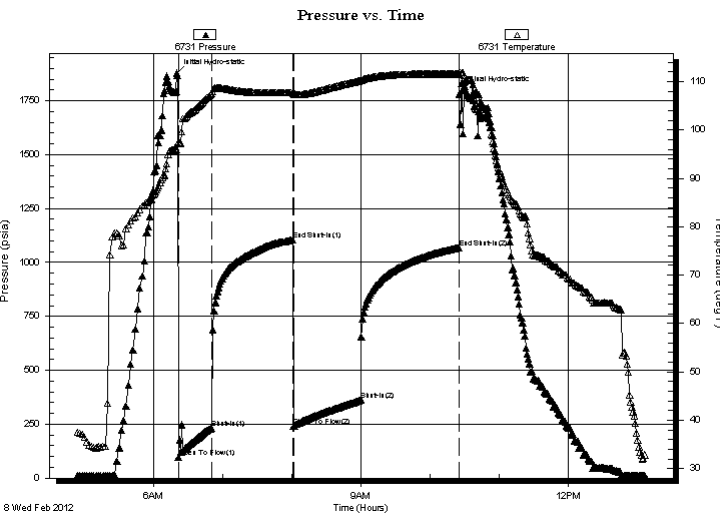
13/15S/18W Ellis Co.
Leiker B 1-13
 Job Ticket: 18833 **DST#: 3**
 Test Start: 2012.02.08 @ 04:53:00

GENERAL INFORMATION:

Formation: **Arbuckle**
 Deviated: No Whipstock: ft (KB)
 Test Type: Conventional Bottom Hole (Initial)
 Time Tool Opened: 06:25:30 Tester: Dylan E Ellis
 Time Test Ended: 13:29:00 Unit No: 3345/Great Bend/110
 Interval: **3528.00 ft (KB) To 3589.00 ft (KB) (TVD)** Reference Elevations: 2009.00 ft (KB)
 Total Depth: 3589.00 ft (KB) (TVD) 2004.00 ft (CF)
 Hole Diameter: 7.88 inches Hole Condition: Fair KB to GR/CF: 5.00 ft

Serial #: 6731 Inside
 Press @ Run Depth: 1069.02 psia @ 3584.48 ft (KB) Capacity: 5000.00 psia
 Start Date: 2012.02.08 End Date: 2012.02.08 Last Calib.: 2012.02.08
 Start Time: 04:53:00 End Time: 13:07:00 Time On Btm: 2012.02.08 @ 06:20:00
 Time Off Btm: 2012.02.08 @ 10:28:00

TEST COMMENT: 1ST Opening 30 Minutes fair building blow /blow blew to bottom of bucket in 8 minutes
 1ST Shut-In 75 Minutes yes blow back/surface
 2ND Opening 60 Minutes steady building blow /blow blew to bottom of bucket in 5 minutes
 2ND Shut-In 90 Minutes yes blow back/



PRESSURE SUMMARY

Time (Min.)	Pressure (psia)	Temp (deg F)	Annotation
0	1877.56	95.93	Initial Hydro-static
2	97.96	97.45	Open To Flow (1)
31	231.71	107.50	Shut-In(1)
101	1106.04	107.73	End Shut-In(1)
102	239.85	107.44	Open To Flow (2)
160	363.09	110.22	Shut-In(2)
245	1069.02	111.57	End Shut-In(2)
248	1795.76	111.91	Final Hydro-static

Recovery

Length (ft)	Description	Volume (bbl)
630.00	Clean Gassy Oil	8.84
0.00	85% Oil 15% Gas	0.00
252.00	Oil cut Gassy Mud	3.53
0.00	10% Oil 15% Gas 75% Mud	0.00
0.00	126' Gas in the pipe	0.00
0.00	Gravity of Oil corrected w as 35	0.00

Gas Rates

	Choke (inches)	Pressure (psia)	Gas Rate (Mcf/d)



DRILL STEM TEST REPORT

TOOL DIAGRAM

Trans Pacific Oil Corp.

13/15S/18W Ellis Co.

100 South Main Suite 200
 Wichita, Kansas
 67202+3735
 ATTN: Bryce Bidleman

Leiker B 1-13

Job Ticket: 18833

DST#: 3

Test Start: 2012.02.08 @ 04:53:00

Tool Information

Drill Pipe:	Length: 3519.00 ft	Diameter: 3.80 inches	Volume: 49.36 bbl	Tool Weight: 2000.00 lb
Heavy Wt. Pipe:	Length: 0.00 ft	Diameter: 0.00 inches	Volume: 0.00 bbl	Weight set on Packer: 20000.00 lb
Drill Collar:	Length: 0.00 ft	Diameter: 2.25 inches	Volume: 0.00 bbl	Weight to Pull Loose: 55000.00 lb
			<u>Total Volume: 49.36 bbl</u>	Tool Chased 0.00 ft
Drill Pipe Above KB:	11.00 ft			String Weight: Initial 46000.00 lb
Depth to Top Packer:	3528.00 ft			Final 51000.00 lb
Depth to Bottom Packer:	ft			
Interval between Packers:	60.48 ft			
Tool Length:	80.48 ft			
Number of Packers:	2	Diameter: 6.75 inches		

Tool Comments: The final weight was around 51-52,000 but for the first 6 stands we were dragging in the hole any were from 60,000 to 84,000 on the weight indicator.

Tool Description	Length (ft)	Serial No.	Position	Depth (ft)	Accum. Lengths
Shut-In Tool	5.00			3513.00	
Hydraulic Tool	5.00			3518.00	
Packer	5.00			3523.00	20.00 Bottom Of Top Packer
Packer	5.00			3528.00	
Anchor	6.00			3534.00	
Change Over Sub	0.75			3534.75	
Drill Pipe	31.98			3566.73	
Change Over Sub	0.75			3567.48	
Anchor	16.00			3583.48	
Recorder	1.00	6731	Inside	3584.48	
Recorder	1.00	6666	Outside	3585.48	
Bull Plug	3.00			3588.48	60.48 Bottom Packers & Anchor

Total Tool Length: 80.48



DRILL STEM TEST REPORT

FLUID SUMMARY

Trans Pacific Oil Corp.

13/15S/18W Ellis Co.

100 South Main Suite 200
 Wichita, Kansas
 67202+3735
 ATTN: Bryce Bidleman

Leiker B 1-13

Job Ticket: 18833

DST#: 3

Test Start: 2012.02.08 @ 04:53:00

Mud and Cushion Information

Mud Type: Gel Chem	Cushion Type:	Oil API:	deg API
Mud Weight: 9.00 lb/gal	Cushion Length: ft	Water Salinity:	ppm
Viscosity: 44.00 sec/qt	Cushion Volume: bbl		
Water Loss: 7.80 in ³	Gas Cushion Type:		
Resistivity: ohm.m	Gas Cushion Pressure: psia		
Salinity: 4800.00 ppm			
Filter Cake: 1.00 inches			

Recovery Information

Recovery Table

Length ft	Description	Volume bbl
630.00	Clean Gassy Oil	8.837
0.00	85% Oil 15% Gas	0.000
252.00	Oil cut Gassy Mud	3.535
0.00	10% Oil 15% Gas 75% Mud	0.000
0.00	126' Gas in the pipe	0.000
0.00	Gravity of Oil corrected w as 35	0.000

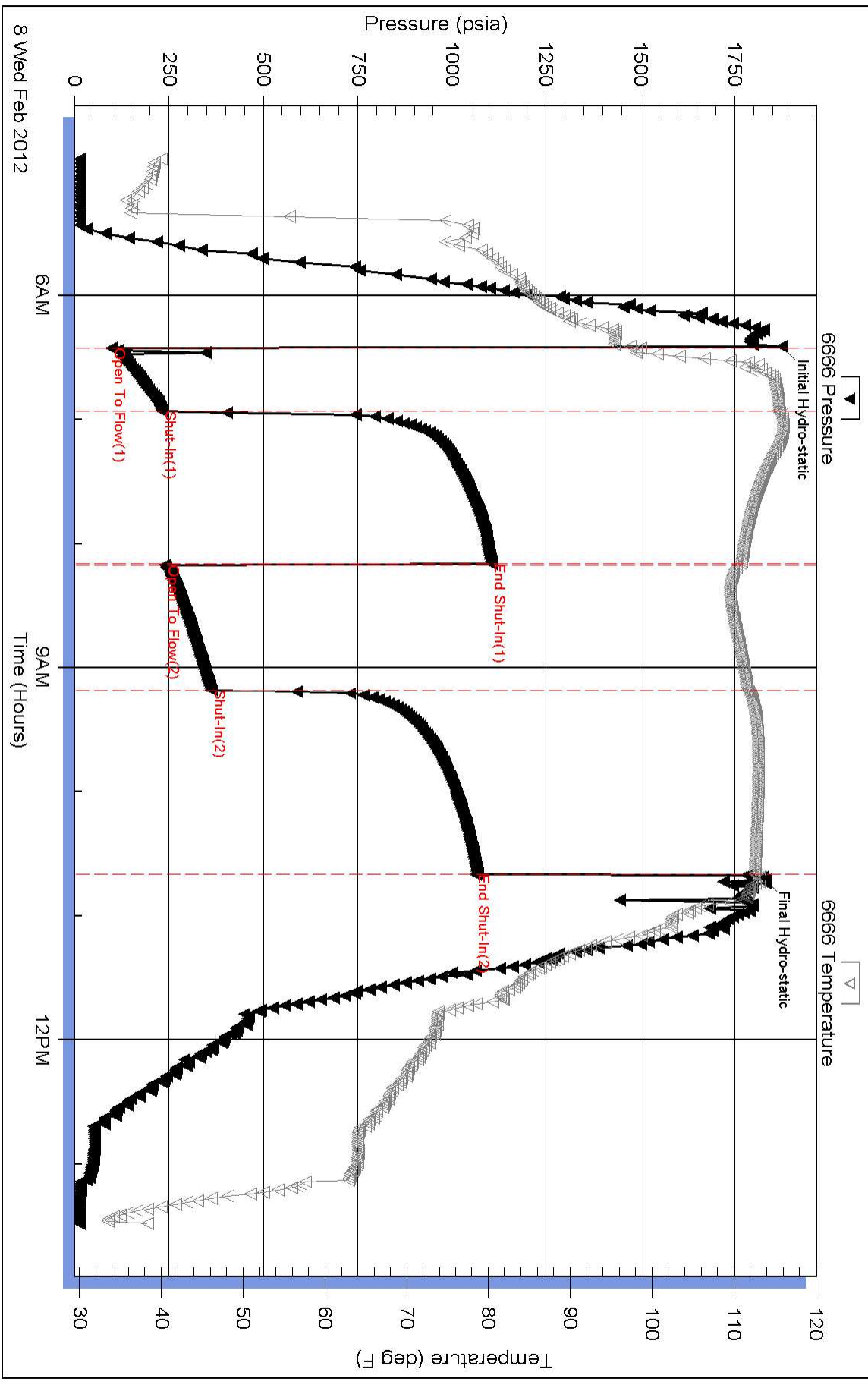
Total Length: 882.00 ft Total Volume: 12.372 bbl

Num Fluid Samples: 0 Num Gas Bombs: 0 Serial #:

Laboratory Name: Laboratory Location:

Recovery Comments: Thank You for the work! Hope to see you on the next one! :-)
 Also take a note that we left half of the bottom packer in the hole!

Pressure vs. Time



Pressure vs. Time

