



DRILL STEM TEST REPORT

Prepared For: **Captiva II L.L.C**

445 Union Blvd Suite 208 Lakewood CO 80228

ATTN: Bruce Ard

7-22s-16w Pawnee

Eakin #6-7

Start Date: 2011.11.25 @ 03:40:00

End Date: 2011.11.25 @ 08:45:30

Job Ticket #: 18662 DST #: 4

Superior Testers Enterprises LLC
PO Box 138 Great Bend KS 67530
1-800-792-6902

Printed: 2011.11.25 @ 08:57:28



DRILL STEM TEST REPORT

Captiva II L.L.C

Eakin #6-7

445 Union Blvd Suite 208 Lakewood CO 80228

7-22s-16w Pawnee

Job Ticket: 18662

DST#: 4

ATTN: Bruce Ard

Test Start: 2011.11.25 @ 03:40:00

GENERAL INFORMATION:

Formation: **Arbuckle**

Deviated: No Whipstock: ft (KB)

Time Tool Opened: 05:28:30

Time Test Ended: 08:45:30

Test Type: Conventional Bottom Hole (Initial)

Tester: Jared Scheck

Unit No: 3320-GB-60

Interval: 3912.00 ft (KB) To 3921.00 ft (KB) (TVD)

Reference Elevations: 2017.00 ft (KB)

Total Depth: 3921.00 ft (KB) (TVD)

2006.00 ft (CF)

Hole Diameter: 7.88 inches Hole Condition: Fair

KB to GR/CF: 11.00 ft

Serial #: 8419

Press @ RunDepth: 54.41 psia @ ft (KB)

Capacity: 5000.00 psia

Start Date: 2011.11.25

End Date: 2011.11.25

Last Calib.: 2011.11.25

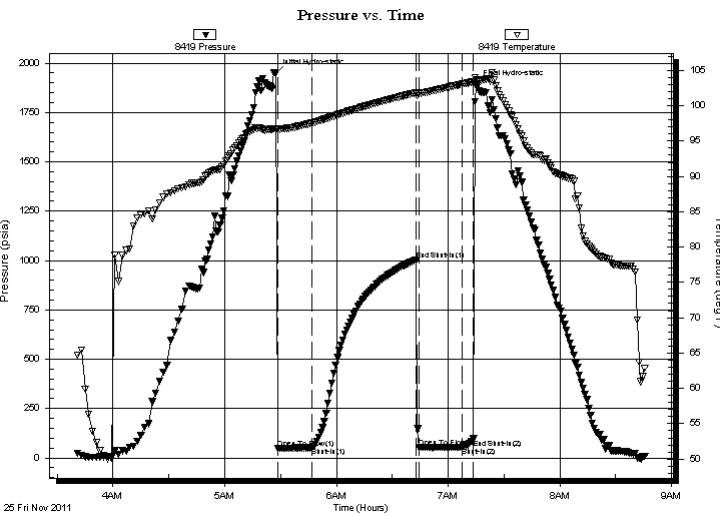
Start Time: 03:40:00

End Time: 08:45:30

Time On Btm: 2011.11.25 @ 05:27:30

Time Off Btm: 2011.11.25 @ 07:15:00

TEST COMMENT: 1st Opening 15 Minutes-Weak surface blow built 1/2 inch into water in 15 minutes
 1st Shh-in 60 Minutes-No blow back
 2nd Opening 20 Minutes-Very weak surface blow died off
 2nd Shut-in 5 Minutes-No blow back



PRESSURE SUMMARY

Time (Min.)	Pressure (psia)	Temp (deg F)	Annotation
0	1948.66	96.76	Initial Hydro-static
1	49.73	96.59	Open To Flow (1)
19	51.47	97.55	Shut-In(1)
76	1004.99	101.85	End Shut-In(1)
77	52.80	101.74	Open To Flow (2)
100	54.41	103.05	Shut-In(2)
106	96.35	103.39	End Shut-In(2)
108	1891.33	103.69	Final Hydro-static

Recovery

Length (ft)	Description	Volume (bbl)
5.00	Mud	0.02

Gas Rates

	Choke (inches)	Pressure (psia)	Gas Rate (Mcf/d)



DRILL STEM TEST REPORT

Captiva II L.L.C

Eakin #6-7

445 Union Blvd Suite 208 Lakewood CO 80228

7-22s-16w Pawnee

Job Ticket: 18662

DST#: 4

ATTN: Bruce Ard

Test Start: 2011.11.25 @ 03:40:00

GENERAL INFORMATION:

Formation: **Arbuckle**

Deviated: No Whipstock: ft (KB)

Time Tool Opened: 05:28:30

Time Test Ended: 08:45:30

Test Type: Conventional Bottom Hole (Initial)

Tester: Jared Scheck

Unit No: 3320-GB-60

Interval: 3912.00 ft (KB) To 3921.00 ft (KB) (TVD)

Reference Elevations: 2017.00 ft (KB)

Total Depth: 3921.00 ft (KB) (TVD)

2006.00 ft (CF)

Hole Diameter: 7.88 inches Hole Condition: Fair

KB to GR/CF: 11.00 ft

Serial #: 8524

Press @ Run Depth: 97.86 psia @ ft (KB)

Capacity: 5000.00 psia

Start Date: 2011.11.25

End Date: 2011.11.25

Last Calib.: 2011.11.25

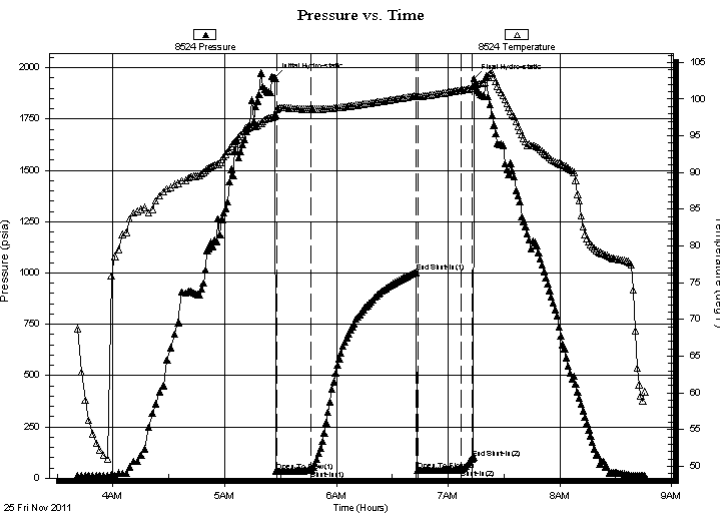
Start Time: 03:40:00

End Time: 08:45:30

Time On Btm: 2011.11.25 @ 05:27:00

Time Off Btm: 2011.11.25 @ 07:14:00

TEST COMMENT: 1st Opening 15 Minutes-Weak surface blow built 1/2 inch into water in 15 minutes
 1st Shut-in 60 Minutes-No blow back
 2nd Opening 20 Minutes-Very weak surface blow died off
 2nd Shut-in 5 Minutes-No blow back



PRESSURE SUMMARY

Time (Min.)	Pressure (psia)	Temp (deg F)	Annotation
0	1950.34	97.61	Initial Hydro-static
1	32.91	98.60	Open To Flow (1)
19	36.51	98.64	Shut-In(1)
76	1003.01	100.45	End Shut-In(1)
77	37.96	100.35	Open To Flow (2)
100	41.34	101.22	Shut-In(2)
106	97.86	101.47	End Shut-In(2)
107	1947.75	101.91	Final Hydro-static

Recovery

Length (ft)	Description	Volume (bbl)
5.00	Mud	0.02

Gas Rates

Choke (inches)	Pressure (psia)	Gas Rate (Mcf/d)



DRILL STEM TEST REPORT

TOOL DIAGRAM

Captiva II L.L.C

Eakin #6-7

445 Union Blvd Suite 208 Lakewood CO 80228

7-22s-16w Pawnee

Job Ticket: 18662

DST#: 4

ATTN: Bruce Ard

Test Start: 2011.11.25 @ 03:40:00

Tool Information

Drill Pipe:	Length: 3704.00 ft	Diameter: 3.80 inches	Volume: 51.96 bbl	Tool Weight:	1000.00 lb
Heavy Wt. Pipe:	Length: 0.00 ft	Diameter: 0.00 inches	Volume: 0.00 bbl	Weight set on Packer:	20000.00 lb
Drill Collar:	Length: 210.00 ft	Diameter: 2.25 inches	Volume: 1.03 bbl	Weight to Pull Loose:	74000.00 lb
			<u>Total Volume: 52.99 bbl</u>	Tool Chased	0.00 ft
Drill Pipe Above KB:	30.00 ft			String Weight: Initial	68000.00 lb
Depth to Top Packer:	3912.00 ft			Final	68000.00 lb
Depth to Bottom Packer:	ft				
Interval between Packers:	9.00 ft				
Tool Length:	37.00 ft				
Number of Packers:	2	Diameter:	6.75 inches		

Tool Comments: Ruined packer

Tool Description

Tool Description	Length (ft)	Serial No.	Position	Depth (ft)	Accum. Lengths
SHut-InTool	5.00		Inside	3889.00	
Hydraulic Tool	5.00			3894.00	
Jars	6.00			3900.00	
Safety Joint	2.00			3902.00	
Packer	5.00			3907.00	28.00 Bottom Of Top Packer
Packer	5.00			3912.00	
Anchor	4.00			3916.00	
Recorder	1.00	8419	Inside	3917.00	
Recorder	1.00	8524	Outside	3918.00	
Bullnose	3.00			3921.00	9.00 Bottom Packers & Anchor
Total Tool Length:	37.00				



DRILL STEM TEST REPORT

FLUID SUMMARY

Captiva II L.L.C

Eakin #6-7

445 Union Blvd Suite 208 Lakewood CO 80228

7-22s-16w Pawnee

Job Ticket: 18662

DST#: 4

ATTN: Bruce Ard

Test Start: 2011.11.25 @ 03:40:00

Mud and Cushion Information

Mud Type: Gel Chem

Cushion Type:

Oil API:

deg API

Mud Weight: 9.00 lb/gal

Cushion Length: ft

Water Salinity: ppm

Viscosity: 55.00 sec/qt

Cushion Volume: bbl

Water Loss: 7.20 in³

Gas Cushion Type:

Resistivity: ohm.m

Gas Cushion Pressure: psia

Salinity: 7200.00 ppm

Filter Cake: 1.00 inches

Recovery Information

Recovery Table

Length ft	Description	Volume bbl
5.00	Mud	0.025

Total Length: 5.00 ft Total Volume: 0.025 bbl

Num Fluid Samples: 0

Num Gas Bombs: 0

Serial #:

Laboratory Name:

Laboratory Location:

Recovery Comments: Ruined Packer

Pressure vs. Time

