



**TRILOBITE  
TESTING, INC.**

# DRILL STEM TEST REPORT

Grand Mesa Operating Co.

**23-16s-33w Scott Co. KS**

1700 N. Waterfront PKWY BLDG 600  
Wichita KS. 67206

**Griffith # 1-23**

Job Ticket: 45827

**DST#: 3**

ATTN: Kent Matson

Test Start: 2012.04.03 @ 07:40:00

## GENERAL INFORMATION:

Formation: **Lansing " E "**

Deviated: No Whipstock: ft (KB)

Time Tool Opened: 09:25:10

Time Test Ended: 13:48:09

Test Type: Conventional Bottom Hole (Reset)

Tester: Will MacLean

Unit No: 40

**Interval: 4054.00 ft (KB) To 4072.00 ft (KB) (TVD)**

Reference Elevations: 3008.00 ft (KB)

Total Depth: 4072.00 ft (KB) (TVD)

3003.00 ft (CF)

Hole Diameter: 7.88 inches Hole Condition: Good

KB to GR/CF: 5.00 ft

**Serial #: 8652**

**Inside**

Press @ Run Depth: 55.89 psig @ 4055.00 ft (KB)

Capacity: 8000.00 psig

Start Date: 2012.04.03

End Date:

2012.04.03

Last Calib.:

2012.04.03

Start Time: 07:40:00

End Time:

13:48:09

Time On Btm:

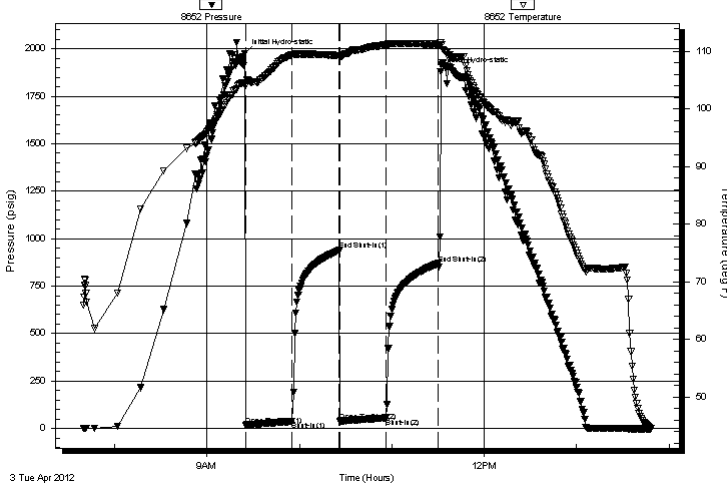
2012.04.03 @ 09:24:40

Time Off Btm:

2012.04.03 @ 11:31:40

**TEST COMMENT:** IF- Weak Surface Blow Built to 1"  
IS- No Blow  
FF- Weak Surface Blow Built to 1/2"  
FS- No Blow

Pressure vs. Time



## PRESSURE SUMMARY

Time (Min.)	Pressure (psig)	Temp (deg F)	Annotation
0	1974.80	104.60	Initial Hydro-static
1	17.87	104.04	Open To Flow (1)
31	36.93	109.33	Shut-In(1)
62	937.95	109.27	End Shut-In(1)
62	38.92	109.05	Open To Flow (2)
92	55.89	111.13	Shut-In(2)
126	868.41	111.24	End Shut-In(2)
127	1880.05	111.57	Final Hydro-static

## Recovery

Length (ft)	Description	Volume (bbl)
60.00	MCW 28%w 72%w	0.30
10.00	WCM 25%w 75%w	0.05

## Gas Rates

	Choke (inches)	Pressure (psig)	Gas Rate (Mcf/d)

\* Recovery from multiple tests



**TRILOBITE  
TESTING, INC.**

# DRILL STEM TEST REPORT

**FLUID SUMMARY**

Grand Mesa Operating Co.

**23-16s-33w Scott Co. KS**

1700 N. Waterfront PKWY BLDG 600  
Wichita KS. 67206

**Griffith # 1-23**

Job Ticket: 45827

**DST#: 3**

ATTN: Kent Matson

Test Start: 2012.04.03 @ 07:40:00

## Mud and Cushion Information

Mud Type: Gel Chem

Cushion Type:

Oil API:

deg API

Mud Weight: 9.00 lb/gal

Cushion Length:

ft

Water Salinity:

ppm

Viscosity: 59.00 sec/qt

Cushion Volume:

bbbl

Water Loss: 7.98 in<sup>3</sup>

Gas Cushion Type:

Resistivity: ohm.m

Gas Cushion Pressure:

psig

Salinity: 3500.00 ppm

Filter Cake: 1.00 inches

## Recovery Information

Recovery Table

Length ft	Description	Volume bbbl
60.00	MCW 28%m 72%w	0.295
10.00	WCM 25%w 75%m	0.049

Total Length: 70.00 ft      Total Volume: 0.344 bbl

Num Fluid Samples: 0

Num Gas Bombs: 0

Serial #:

Laboratory Name:

Laboratory Location:

Recovery Comments: RW is .218 @ 72f = 31000

