



TRILOBITE TESTING, INC.

DRILL STEM TEST REPORT

Shakespeare Oil
 202 West Main St
 Salem, IL
 62881
 ATTN: Tim Priest

11-13s-32w Logan, Ks

T & J Farming #1-11

Job Ticket: 44963 **DST#: 4**
 Test Start: 2012.03.10 @ 06:40:24

GENERAL INFORMATION:

Formation: **Johnson**
 Deviated: No Whipstock: 0.00 ft (KB)
 Time Tool Opened: 08:42:24
 Time Test Ended: 15:25:09
 Interval: **4573.00 ft (KB) To 4620.00 ft (KB) (TVD)**
 Total Depth: 4620.00 ft (KB) (TVD)
 Hole Diameter: 7.88 inches Hole Condition: Fair
 Test Type: Conventional Bottom Hole (Reset)
 Tester: Shane McBride
 Unit No: 55
 Reference Elevations: 3017.00 ft (KB)
 3008.00 ft (CF)
 KB to GR/CF: 9.00 ft

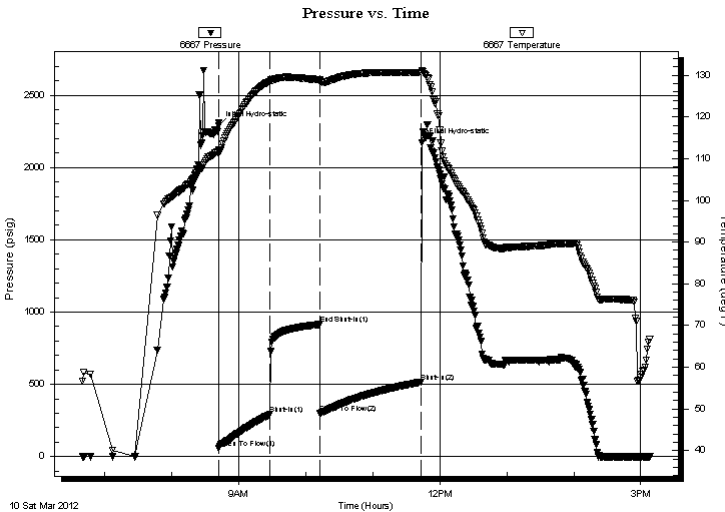
Serial #: 6667

Outside

Press @ Run Depth: 292.43 psig @ 4574.00 ft (KB) Capacity: 8000.00 psig
 Start Date: 2012.03.10 End Date: 2012.03.10 Last Calib.: 2012.03.10
 Start Time: 06:40:24 End Time: 15:08:09 Time On Btm: 2012.03.10 @ 08:42:09
 Time Off Btm: 2012.03.10 @ 11:43:54

TEST COMMENT: B.O.B. in 3 1/2 min.
 Bled off for 12 min. Return to B.O.B. in 5 min.
 B.O.B. @ open
 Bled off throughout

PRESSURE SUMMARY



Time (Min.)	Pressure (psig)	Temp (deg F)	Annotation
0	2291.18	112.07	Initial Hydro-static
1	55.86	111.66	Open To Flow (1)
46	292.43	128.54	Shut-In(1)
91	915.31	128.82	End Shut-In(1)
91	301.61	128.44	Open To Flow (2)
182	515.71	130.65	Shut-In(2)
182	2170.71	131.13	Final Hydro-static

Recovery

Length (ft)	Description	Volume (bbl)
124.00	s m c g o 10m 30g 60o	0.62
62.00	m c g o 30m 20g 50o	0.87
992.00	c g o reversed out 40g 60o	13.92
310.00	c g o dumped 40g 60o	4.35
0.00	2666' gas in pipe	0.00

* Recovery from multiple tests

Gas Rates

Choke (inches)	Pressure (psig)	Gas Rate (Mcf/d)
----------------	-----------------	------------------



**TRILOBITE
TESTING, INC.**

DRILL STEM TEST REPORT

FLUID SUMMARY

Shakespeare Oil
202 West Main St
Salem, IL
62881
ATTN: Tim Priest

11-13s-32w Logan, Ks
T & J Farming #1-11
Job Ticket: 44963 **DST#: 4**
Test Start: 2012.03.10 @ 06:40:24

Mud and Cushion Information

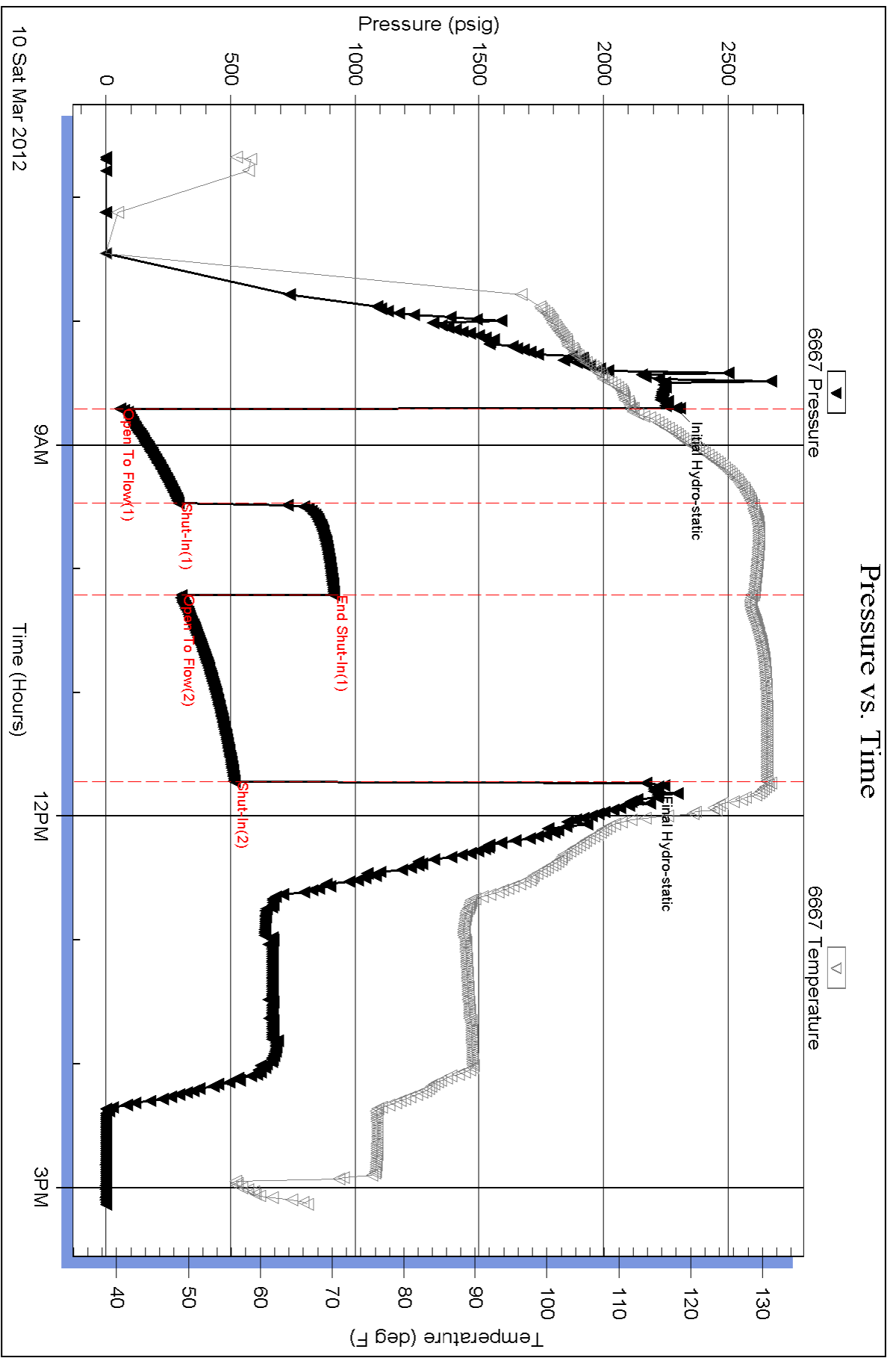
Mud Type: Gel Chem	Cushion Type:	Oil API: 29 deg API
Mud Weight: 9.00 lb/gal	Cushion Length: ft	Water Salinity: 0 ppm
Viscosity: 58.00 sec/qt	Cushion Volume: bbl	
Water Loss: 9.57 in ³	Gas Cushion Type:	
Resistivity: 0.00 ohm.m	Gas Cushion Pressure: psig	
Salinity: 4000.00 ppm		
Filter Cake: 1.00 inches		

Recovery Information

Recovery Table

Length ft	Description	Volume bbl
124.00	s m c g o 10m 30g 60o	0.619
62.00	m c g o 30m 20g 50o	0.870
992.00	c g o reversed out 40g 60o	13.915
310.00	c g o dumped 40g 60o	4.348
0.00	2666' gas in pipe	0.000

Total Length: 1488.00 ft Total Volume: 19.752 bbl
Num Fluid Samples: 0 Num Gas Bombs: 0 Serial #:
Laboratory Name: Laboratory Location:
Recovery Comments:



Serial #: 6771

Inside

Shakespeare Oil

T & J Farming #1-11

DST Test Number: 4

