



DRILL STEM TEST REPORT

Prepared For: **Hartman Oil Co Inc**

10500 E Berkeley SQ Pkwy
Ste 100
Wichita KS 67206

ATTN: Stan Mitchell

32-11s-25w Trego,KS

SchambergerTrust #1-32

Start Date: 2012.01.17 @ 01:45:54

End Date: 2012.01.17 @ 10:31:49

Job Ticket #: 46826 DST #: 1

Trilobite Testing, Inc

PO Box 362 Hays, KS 67601

ph: 785-625-4778 fax: 785-625-5620

Printed: 2012.01.19 @ 12:12:00



**TRILOBITE
TESTING, INC.**

DRILL STEM TEST REPORT

Hartman Oil Co Inc
10500 E Berkeley SQ Pkw y
Ste 100
Wichita KS 67206
ATTN: Stan Mitchell

SchambergerTrust #1-32
32-11s-25w Trego,KS
Job Ticket: 46826 **DST#: 1**
Test Start: 2012.01.17 @ 01:45:54

GENERAL INFORMATION:

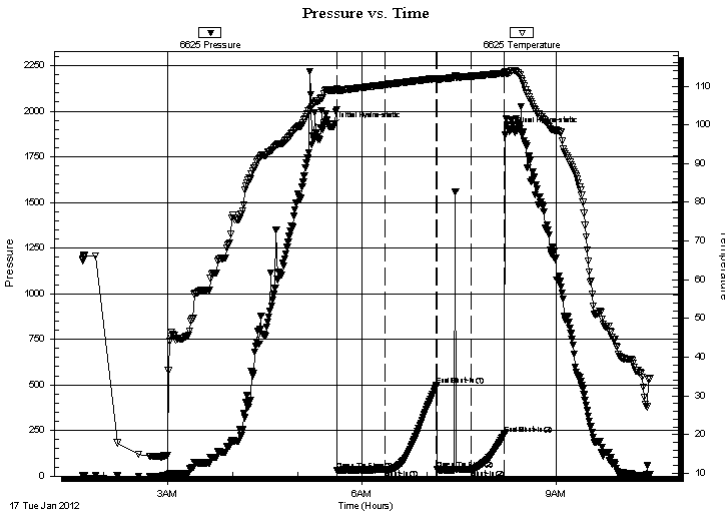
Formation: **LKC H-I**
Deviated: No Whipstock: ft (KB)
Time Tool Opened: 05:40:49
Time Test Ended: 10:31:49
Test Type: Conventional Bottom Hole (Initial)
Tester: Ray Schwager
Unit No: 42
Interval: **4015.00 ft (KB) To 4068.00 ft (KB) (TVD)**
Reference Elevations: 2577.00 ft (KB)
Total Depth: 4068.00 ft (KB) (TVD)
2567.00 ft (CF)
Hole Diameter: 7.88 inches Hole Condition: Fair
KB to GR/CF: 10.00 ft

Serial #: 6625 Inside

Press @ Run Depth: 38.62 psig @ 4030.00 ft (KB) Capacity: 8000.00 psig
Start Date: 2012.01.17 End Date: 2012.01.17 Last Calib.: 2012.01.17
Start Time: 01:40:54 End Time: 10:26:49 Time On Btm: 2012.01.17 @ 05:31:49
Time Off Btm: 2012.01.17 @ 08:16:48

TEST COMMENT: 45-IFP-w k 1/4"bl , died in 40 min
45-ISIP-no bl
30-FFP-no bl , flushed tool
30-FSIP-no bl

PRESSURE SUMMARY



Time (Min.)	Pressure (psig)	Temp (deg F)	Annotation
0	1914.99	108.99	Initial Hydro-static
5	32.01	108.97	Open To Flow (1)
50	35.55	110.37	Shut-In(1)
97	496.10	112.01	End Shut-In(1)
98	36.36	111.88	Open To Flow (2)
129	38.62	112.56	Shut-In(2)
160	231.01	113.36	End Shut-In(2)
165	1888.65	113.45	Final Hydro-static

Recovery

Length (ft)	Description	Volume (bbl)
20.00	Mud w/show of oil	0.10

Gas Rates

Choke (inches)	Pressure (psig)	Gas Rate (Mcf/d)



**TRILOBITE
TESTING, INC.**

DRILL STEM TEST REPORT

TOOL DIAGRAM

Hartman Oil Co Inc
10500 E Berkeley SQ Pkwy
Ste 100
Wichita KS 67206
ATTN: Stan Mitchell

SchambergerTrust #1-32
32-11s-25w Trego,KS
Job Ticket: 46826 **DST#: 1**
Test Start: 2012.01.17 @ 01:45:54

Tool Information

Drill Pipe:	Length: 3707.00 ft	Diameter: 3.80 inches	Volume: 52.00 bbl	Tool Weight: 2200.00 lb
Heavy Wt. Pipe:	Length: 0.00 ft	Diameter: 0.00 inches	Volume: 0.00 bbl	Weight set on Packer: 25000.00 lb
Drill Collar:	Length: 300.00 ft	Diameter: 2.25 inches	Volume: 1.48 bbl	Weight to Pull Loose: 70000.00 lb
			<u>Total Volume: 53.48 bbl</u>	Tool Chased 0.00 ft
Drill Pipe Above KB:	13.00 ft			String Weight: Initial 57000.00 lb
Depth to Top Packer:	4015.00 ft			Final 57000.00 lb
Depth to Bottom Packer:	ft			
Interval between Packers:	53.00 ft			
Tool Length:	74.00 ft			
Number of Packers:	2	Diameter: 6.75 inches		

Tool Comments:

Tool Description	Length (ft)	Serial No.	Position	Depth (ft)	Accum. Lengths
-------------------------	--------------------	-------------------	-----------------	-------------------	-----------------------

Change Over Sub	1.00			3995.00	
Shut In Tool	5.00			4000.00	
Hydraulic tool	5.00			4005.00	
Packer	5.00			4010.00	21.00 Bottom Of Top Packer
Packer	5.00			4015.00	
Stubb	1.00			4016.00	
Perforations	14.00			4030.00	
Recorder	0.00	6625	Inside	4030.00	
Recorder	0.00	8700	Outside	4030.00	
Blank Spacing	33.00			4063.00	
Perforations	2.00			4065.00	
Bullnose	3.00			4068.00	53.00 Bottom Packers & Anchor

Total Tool Length: 74.00



**TRILOBITE
TESTING, INC.**

DRILL STEM TEST REPORT

FLUID SUMMARY

Hartman Oil Co Inc
10500 E Berkeley SQ Pkw y
Ste 100
Wichita KS 67206
ATTN: Stan Mitchell

SchambergerTrust #1-32
32-11s-25w Trego,KS
Job Ticket: 46826 **DST#: 1**
Test Start: 2012.01.17 @ 01:45:54

Mud and Cushion Information

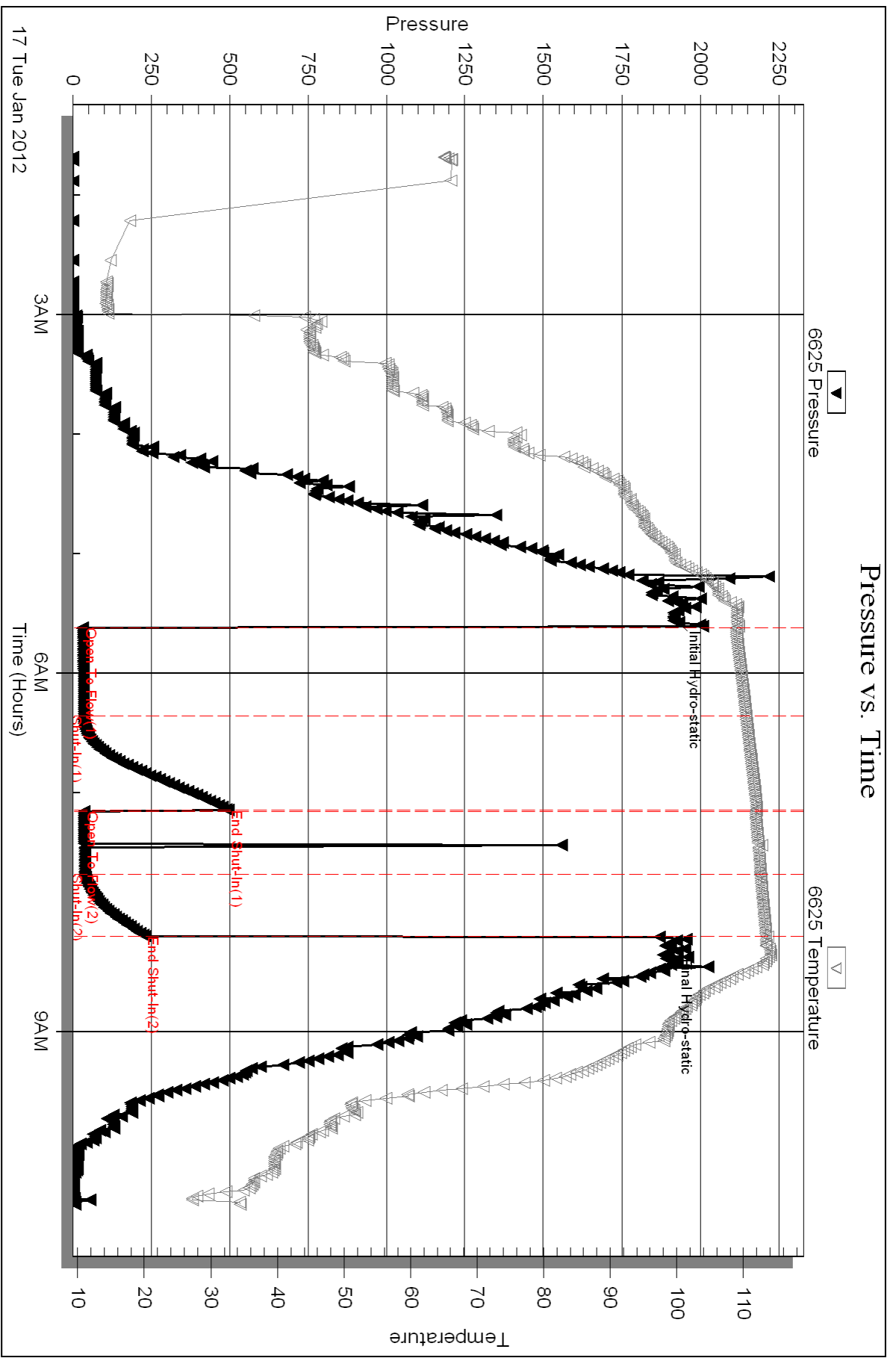
Mud Type: Gel Chem	Cushion Type:	Oil API:	deg API
Mud Weight: 9.00 lb/gal	Cushion Length: ft	Water Salinity:	ppm
Viscosity: 58.00 sec/qt	Cushion Volume: bbl		
Water Loss: 6.77 in ³	Gas Cushion Type:		
Resistivity: ohm.m	Gas Cushion Pressure: psig		
Salinity: 1900.00 ppm			
Filter Cake: 1.00 inches			

Recovery Information

Recovery Table

Length ft	Description	Volume bbl
20.00	Mud w/show of oil	0.098

Total Length: 20.00 ft Total Volume: 0.098 bbl
Num Fluid Samples: 0 Num Gas Bombs: 0 Serial #:
Laboratory Name: Laboratory Location:
Recovery Comments:

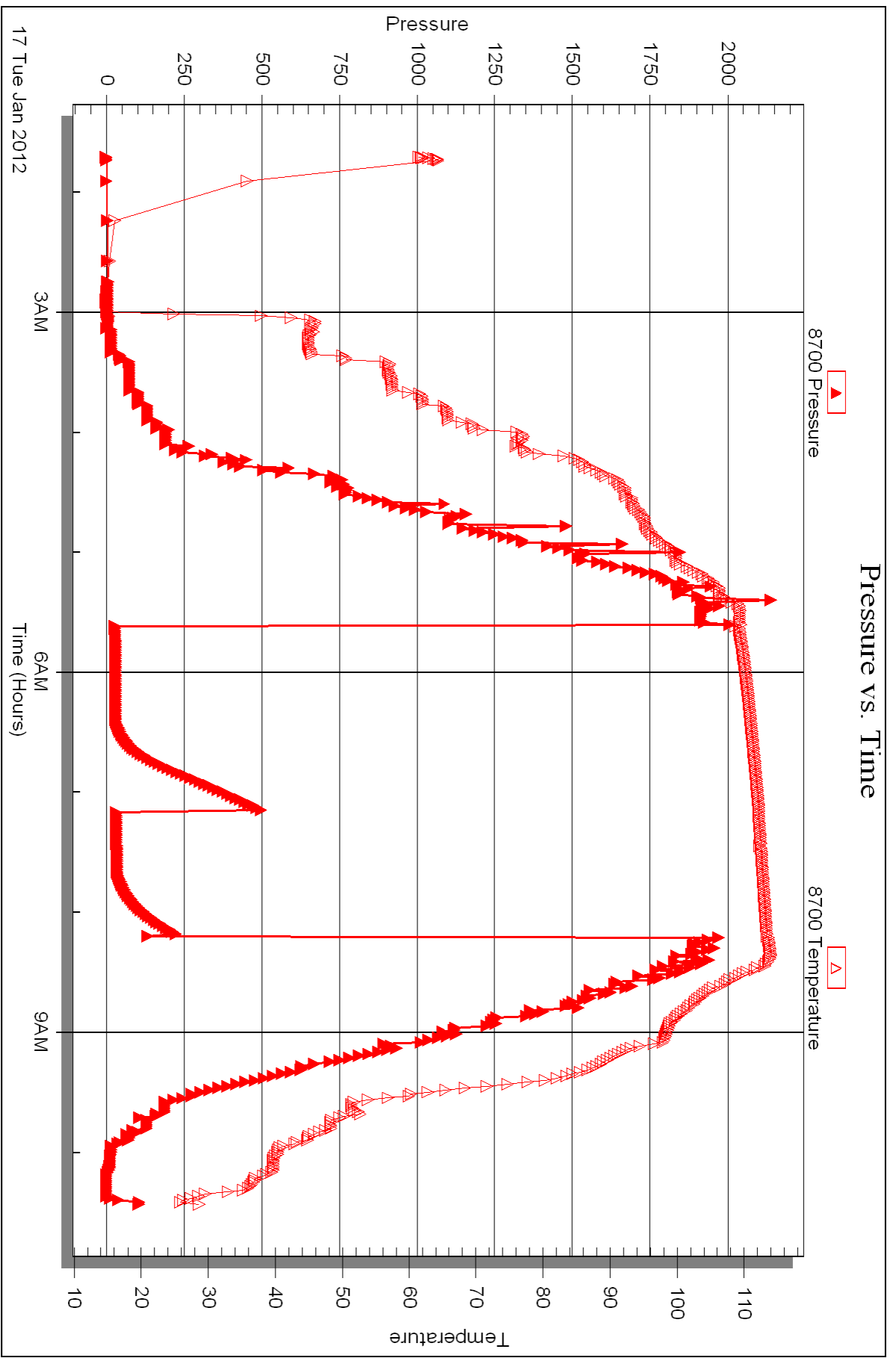


Serial #: 8700

Outside Hartman Oil Co Inc

32-11s-25w Trego, KS

DST Test Number: 1



Triobite Testing, Inc

Ref. No: 46826

Printed: 2012.01.19 @ 12:12:03



DRILL STEM TEST REPORT

Prepared For: **Hartman Oil Co Inc**

10500 E Berkeley SQ Pkwy
Ste 100
Wichita KS 67206

ATTN: Stan Mitchell

32-11s-25w Trego,KS

SchambergerTrust #1-32

Start Date: 2012.01.18 @ 11:40:30

End Date: 2012.01.18 @ 18:46:54

Job Ticket #: 46827 DST #: 2

Trilobite Testing, Inc

PO Box 362 Hays, KS 67601

ph: 785-625-4778 fax: 785-625-5620

Printed: 2012.01.19 @ 12:10:49

Hartman Oil Co Inc
SchambergerTrust #1-32
32-11s-25w Trego,KS
DST # 2
Ft Scott
2012.01.18



TRILOBITE TESTING, INC.

DRILL STEM TEST REPORT

Hartman Oil Co Inc
 10500 E Berkeley SQ Pkw y
 Ste 100
 Wichita KS 67206
 ATTN: Stan Mitchell

SchambergerTrust #1-32
32-11s-25w Trego,KS
 Job Ticket: 46827 **DST#: 2**
 Test Start: 2012.01.18 @ 11:40:30

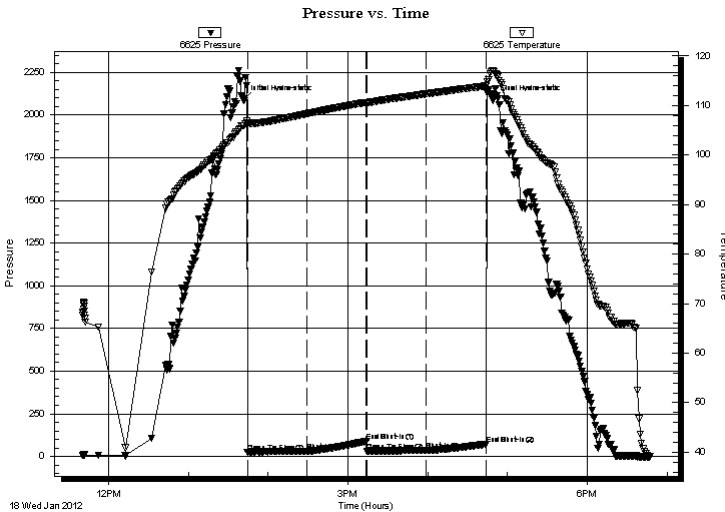
GENERAL INFORMATION:

Formation: **Ft Scott**
 Deviated: No Whipstock: ft (KB)
 Time Tool Opened: 13:44:25
 Time Test Ended: 18:46:54
 Interval: **4333.00 ft (KB) To 4376.00 ft (KB) (TVD)**
 Total Depth: 4476.00 ft (KB) (TVD)
 Hole Diameter: 7.88 inches Hole Condition: Fair
 Test Type: Conventional Bottom Hole (Reset)
 Tester: Ray Schwager
 Unit No: 42
 Reference Elevations: 2577.00 ft (KB)
 2567.00 ft (CF)
 KB to GR/CF: 10.00 ft

Serial #: 6625 Inside
 Press @ Run Depth: 35.36 psig @ 4342.00 ft (KB) Capacity: 8000.00 psig
 Start Date: 2012.01.18 End Date: 2012.01.18 Last Calib.: 2012.01.18
 Start Time: 11:40:30 End Time: 18:46:54 Time On Btm: 2012.01.18 @ 13:41:25
 Time Off Btm: 2012.01.18 @ 16:48:54

TEST COMMENT: 45-IFP-w k bl 1/2"to 2 1/4"bl
 45-ISIP-no bl
 45-FFP-w k bl 1/4"to 1"bl
 45-FSIP-no bl

PRESSURE SUMMARY



Time (Min.)	Pressure (psig)	Temp (deg F)	Annotation
0	2090.40	106.00	Initial Hydro-static
3	24.16	106.48	Open To Flow (1)
48	31.24	108.33	Shut-In(1)
93	90.26	110.65	End Shut-In(1)
93	30.44	110.65	Open To Flow (2)
138	35.36	112.35	Shut-In(2)
183	71.65	113.96	End Shut-In(2)
188	2088.09	117.11	Final Hydro-static

Recovery

Length (ft)	Description	Volume (bbl)
0.00	90' GIP	0.00
10.00	MGO 5%G40%M55%O	0.05
20.00	HO&GCM 5%G35%O60%M	0.10

* Recovery from multiple tests

Gas Rates

Choke (inches)	Pressure (psig)	Gas Rate (Mcf/d)



**TRILOBITE
TESTING, INC.**

DRILL STEM TEST REPORT

TOOL DIAGRAM

Hartman Oil Co Inc
10500 E Berkeley SQ Pkwy
Ste 100
Wichita KS 67206
ATTN: Stan Mitchell

SchambergerTrust #1-32
32-11s-25w Trego,KS
Job Ticket: 46827 **DST#: 2**
Test Start: 2012.01.18 @ 11:40:30

Tool Information

Drill Pipe:	Length: 4020.00 ft	Diameter: 3.80 inches	Volume: 56.39 bbl	Tool Weight:	2200.00 lb
Heavy Wt. Pipe:	Length: 0.00 ft	Diameter: 0.00 inches	Volume: 0.00 bbl	Weight set on Packer:	25000.00 lb
Drill Collar:	Length: 300.00 ft	Diameter: 2.25 inches	Volume: 1.48 bbl	Weight to Pull Loose:	95000.00 lb
			<u>Total Volume: 57.87 bbl</u>	Tool Chased	0.00 ft
Drill Pipe Above KB:	8.00 ft			String Weight: Initial	60000.00 lb
Depth to Top Packer:	4333.00 ft			Final	62000.00 lb
Depth to Bottom Packer:	ft				
Interval between Packers:	43.00 ft				
Tool Length:	64.00 ft				
Number of Packers:	2	Diameter: 6.75 inches			

Tool Comments:

Tool Description	Length (ft)	Serial No.	Position	Depth (ft)	Accum. Lengths
Change Over Sub	1.00			4313.00	
Shut In Tool	5.00			4318.00	
Hydraulic tool	5.00			4323.00	
Packer	5.00			4328.00	21.00 Bottom Of Top Packer
Packer	5.00			4333.00	
Stubb	1.00			4334.00	
Perforations	8.00			4342.00	
Recorder	0.00	6625	Inside	4342.00	
Recorder	0.00	8700	Outside	4342.00	
Blank Spacing	31.00			4373.00	
Bullnose	3.00			4376.00	43.00 Bottom Packers & Anchor

Total Tool Length: 64.00



**TRILOBITE
TESTING, INC.**

DRILL STEM TEST REPORT

FLUID SUMMARY

Hartman Oil Co Inc
10500 E Berkeley SQ Pkw y
Ste 100
Wichita KS 67206
ATTN: Stan Mitchell

SchambergerTrust #1-32
32-11s-25w Trego,KS
Job Ticket: 46827 **DST#: 2**
Test Start: 2012.01.18 @ 11:40:30

Mud and Cushion Information

Mud Type: Gel Chem	Cushion Type:	Oil API:	deg API
Mud Weight: 9.00 lb/gal	Cushion Length: ft	Water Salinity:	ppm
Viscosity: 60.00 sec/qt	Cushion Volume: bbl		
Water Loss: 6.38 in ³	Gas Cushion Type:		
Resistivity: ohm.m	Gas Cushion Pressure: psig		
Salinity: 1800.00 ppm			
Filter Cake: 1.00 inches			

Recovery Information

Recovery Table

Length ft	Description	Volume bbl
0.00	90' GIP	0.000
10.00	MGO 5%G40%M55%O	0.049
20.00	HO&GCM 5%G35%O60%M	0.098

Total Length: 30.00 ft Total Volume: 0.147 bbl
Num Fluid Samples: 0 Num Gas Bombs: 0 Serial #:
Laboratory Name: Laboratory Location:
Recovery Comments:

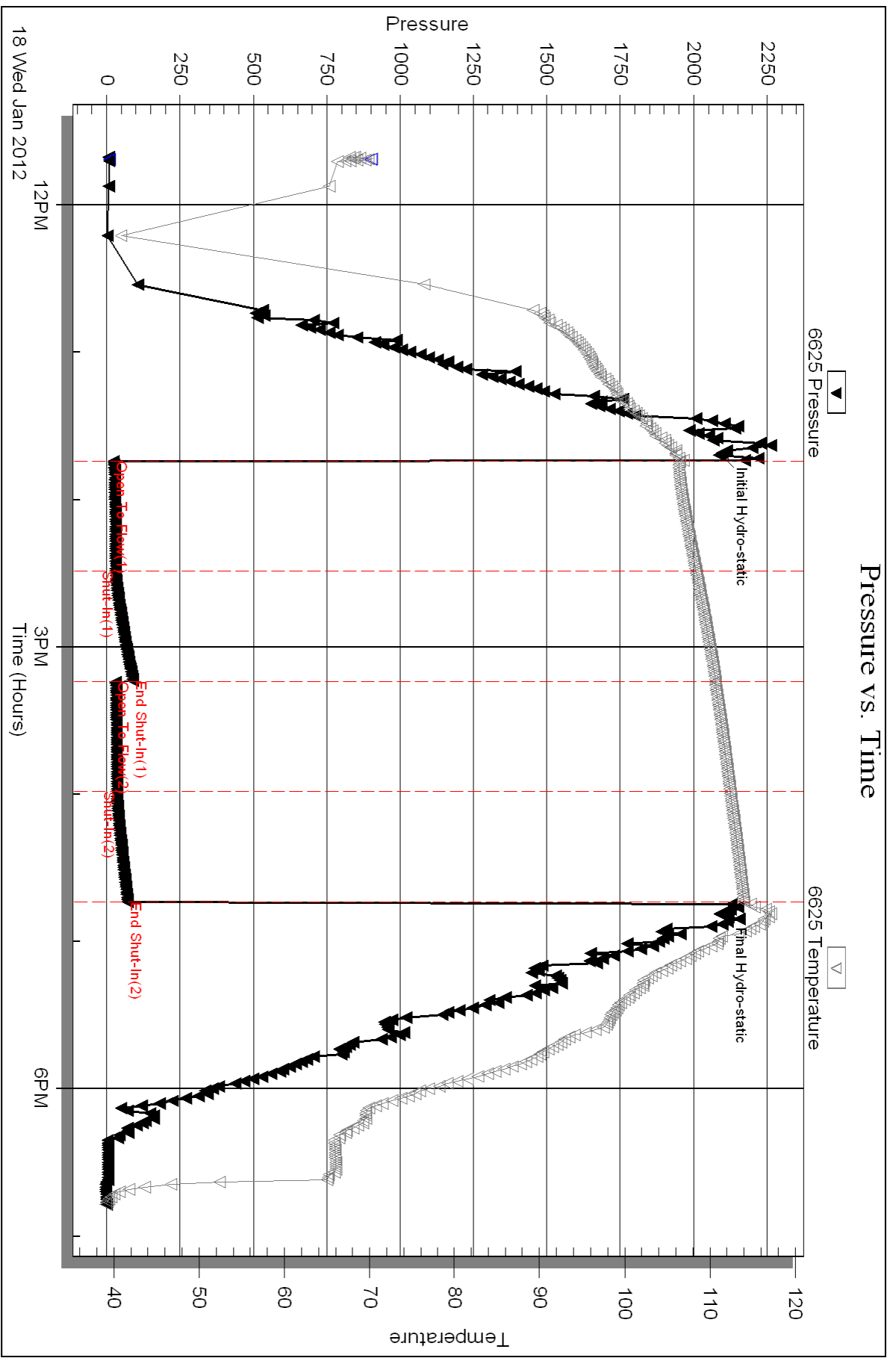
Serial #: 6625

Inside

Hartman Oil Co Inc

32-11s-25w Trego KS

DST Test Number: 2



Triobite Testing, Inc

Ref. No: 46827

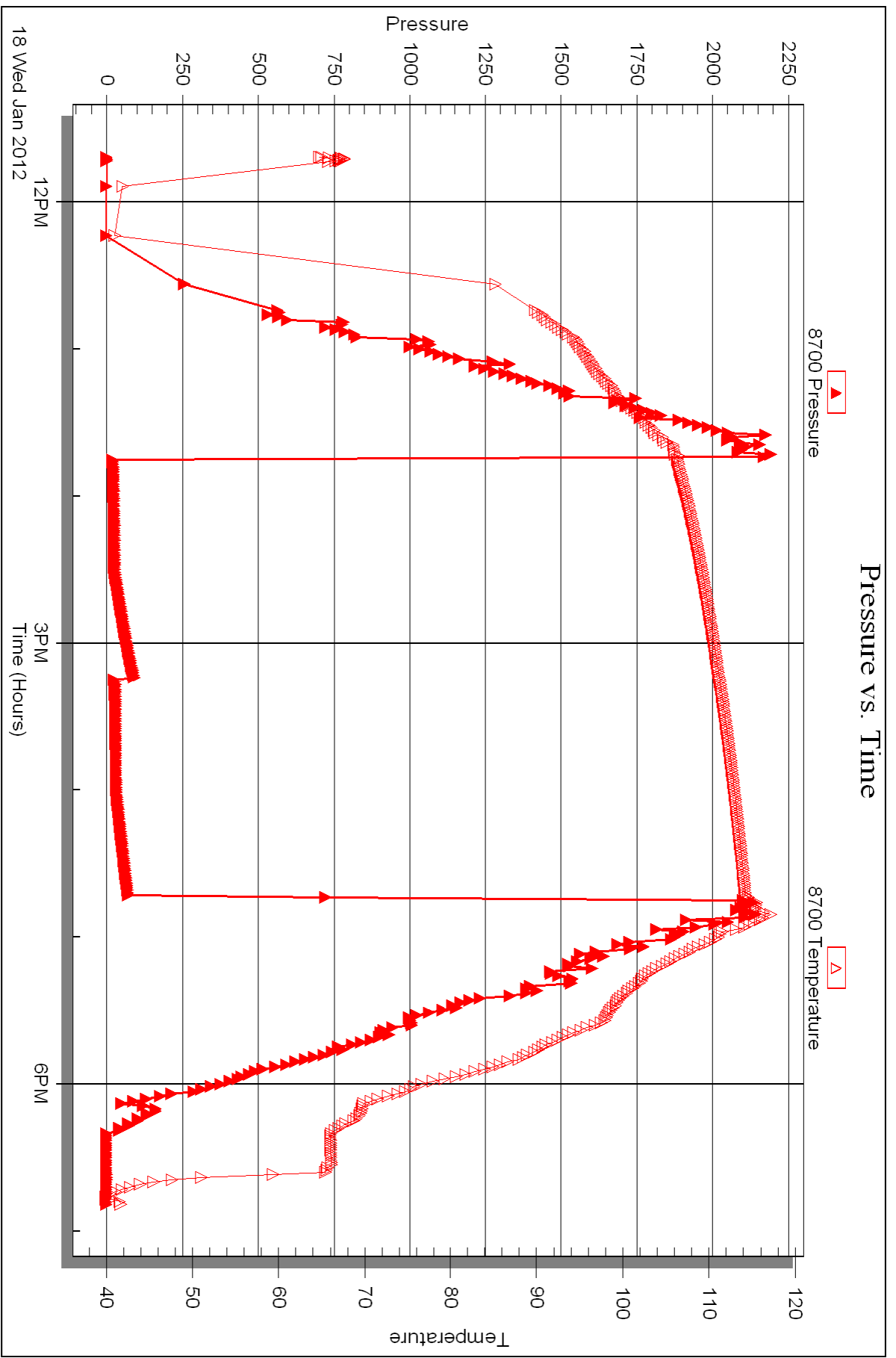
Printed: 2012.01.19 @ 12:10:51

Serial #: 8700

Outside Hartman Oil Co Inc

32-11s-25w Trego KS

DST Test Number: 2



Triobite Testing, Inc

Ref. No: 46827

Printed: 2012.01.19 @ 12:10:51



TRILOBITE TESTING INC.

P.O. Box 1733 • Hays, Kansas 67601

RECEIVED
JAN 18 2012

Test Ticket

NO. 46826

BY: _____

Well Name & No. Schamberger Trust #132 Test No. 1 Date 1-16-12
 Company HARTMAN OIL Co. INC Elevation 2577 KB 2567 GL
 Address 10500 E. Berkeley SQ Pkwy Ste 100 WICHITA, KS 67206
 Co. Rep / Geo. KITT NOAK Rig H2 rig 3
 Location: Sec. 32 Twp. 11^s Rge. 25^w Co. Trego State Ks

Interval Tested 4015-4068 Zone Tested LKC H-I
 Anchor Length 53 Drill Pipe Run 3707 Mud Wt. 9.2
 Top Packer Depth 4010 Drill Collars Run 300 Vis 58
 Bottom Packer Depth 4015 Wt. Pipe Run - WL 6.8
 Total Depth 4068 Chlorides 1900 ppm System LCM 3#
 Blow Description IFP - WEAK 1/4" Blow, died in 40 min
ISIP - NO BLOW
FFP - NO BLOW, flushed Tool,
FSIP - NO BLOW

Rec	Feet of	%gas	%oil	%water	%mud
<u>20</u>	<u>Mud</u>				
	<u>w/show of oil</u>				

Rec Total 20 BHT 1 Gravity - API RW - @ - ° F Chlorides - ppm

(A) Initial Hydrostatic 1914 Test 1225' T-On Location 2300
 (B) First Initial Flow 32 Jars - T-Started 0145
 (C) First Final Flow 35 Safety Joint - T-Open 0540
 (D) Initial Shut-In 496 Circ Sub - T-Pulled 0810
 (E) Second Initial Flow 36 Hourly Standby - T-Out -
 (F) Second Final Flow 38 Mileage 100 RT 140' Comments -
 (G) Final Shut-In 231 Sampler -
 (H) Final Hydrostatic 1888 Straddle - Ruined Shale Packer -
 Shale Packer - Ruined Packer -
 Extra Packer - Extra Copies -
 Initial Open 45 Extra Recorder - Sub Total cb
 Initial Shut-In 45 Day Standby - Total 1365'
 Final Flow 30 Accessibility - MP/DST Disc't -
 Final Shut-In 30 Sub Total 1365'

Approved By Kitt Noak Our Representative Ray Schwager Thank you

TriLOBITE Testing Inc. shall not be liable for damaged of any kind of the property or personnel of the one for whom a test is made, or for any loss suffered or sustained, directly or indirectly, through the use of its equipment, or its statements or opinion concerning the results of any test, tools lost or damaged in the hole shall be paid for at cost by the party for whom the test is made.



TRILOBITE TESTING INC.

P.O. Box 1733 • Hays, Kansas 67601

Test Ticket

NO. 46827

RECEIVED
JAN 19 2012

Well Name & No. Schamberger Trust #1-32 BY: Test No. 2 Date 1-18-12
 Company HARTMAN OIL Co Inc Elevation 2577 KB 2567 GL
 Address 10500 E. Berkeley SQ Pkwy Ste 100 WICHITA, KS 67206
 Co. Rep / Geo. KITT Noah Rig H2 rig 3
 Location: Sec. 32 Twp. 11^s Rge. 25^w Co. Trego State Ks

Interval Tested 4333-4376 Zone Tested FT SCOTT
 Anchor Length 43 Drill Pipe Run 4020 Mud Wt. 9.3
 Top Packer Depth 4328 Drill Collars Run 300 Vis 60
 Bottom Packer Depth 4333 Wt. Pipe Run - WL 6.4
 Total Depth 4376 Chlorides 1800 ppm System LCM 2#

Blow Description IFP - WEAK Blow 1/2" To 2 1/4" Blow
ISIP - NO Blow
FFP - WEAK Blow 1/4" To 1" Blow
FSIP - NO Blow

Rec	Feet of	%gas	%oil	%water	%mud
<u>90</u>	<u>GIP</u>				
<u>10</u>	<u>MGO</u>	<u>5</u>	<u>55</u>	<u>40</u>	
<u>20</u>	<u>HO + GCM</u>	<u>5</u>	<u>35</u>	<u>60</u>	

Rec Total 30 BHT 114 Gravity - API RW - @ - ° F Chlorides - ppm

(A) Initial Hydrostatic 2090 Test 1225' T-On Location 1030
 (B) First Initial Flow 24 Jars T-Started 1140
 (C) First Final Flow 31 Safety Joint T-Open 1345
 (D) Initial Shut-In 90 Circ Sub T-Pulled 1645
 (E) Second Initial Flow 30 Hourly Standby T-Out 1846
 (F) Second Final Flow 35 Mileage 100 RT 140' Comments
 (G) Final Shut-In 71 Sampler
 (H) Final Hydrostatic 2088 Straddle

Shale Packer Ruined Shale Packer
 Extra Packer Ruined Packer
 Extra Recorder Extra Copies

Initial Open 45
 Initial Shut-In 45
 Final Flow 45
 Final Shut-In 45
 Sub Total 1305'
 Total 1305'
 MP/DST Disc't

Approved By Kitt Noah Our Representative Ray Schwager Thank you

Trilobite Testing Inc. shall not be liable for damaged of any kind of the property or personnel of the one for whom a test is made, or for any loss suffered or sustained directly or indirectly, through the use of its equipment, or its statements or opinion concerning the results of any test, tools lost or damaged in the hole shall be paid for at cost by the party for whom the test is made.