



## DRILL STEM TEST REPORT

Prepared For: **Prospect Oil & Gas**

PO Box 837  
Russell KS 67665

ATTN: Brad Hutchison

### **West Beaver Creek #2**

### **29-15s-12w Russell,KS**

Start Date: 2012.03.28 @ 11:20:00

End Date: 2012.03.28 @ 17:36:30

Job Ticket #: 46048                      DST #: 1

Trilobite Testing, Inc

PO Box 362 Hays, KS 67601

ph: 785-625-4778 fax: 785-625-5620

Printed: 2012.04.04 @ 13:54:45



**TRILOBITE  
TESTING, INC**

# DRILL STEM TEST REPORT

Prospect Oil & Gas

**29-15s-12w Russell,KS**

PO Box 837  
Russell KS 67665

**West Beaver Creek #2**

ATTN: Brad Hutchison

Job Ticket: 46048

**DST#: 1**

Test Start: 2012.03.28 @ 11:20:00

## GENERAL INFORMATION:

Formation: **Toronto**

Deviated: No Whipstock: 1885.00 ft (KB)

Time Tool Opened: 13:04:00

Time Test Ended: 17:36:30

Test Type: Conventional Bottom Hole (Initial)

Tester: Jim Svaty

Unit No: 59

**Interval: 2965.00 ft (KB) To 3025.00 ft (KB) (TVD)**

Reference Elevations: 1885.00 ft (KB)

Total Depth: 3025.00 ft (KB) (TVD)

1878.00 ft (CF)

Hole Diameter: 7.88 inches Hole Condition: Fair

KB to GR/CF: 7.00 ft

**Serial #: 6753 Outside**

Press @ Run Depth: 80.46 psig @ 2966.00 ft (KB)

Capacity: 8000.00 psig

Start Date: 2012.03.28

End Date:

2012.03.28

Last Calib.:

2012.03.28

Start Time: 11:20:05

End Time:

17:36:29

Time On Btm:

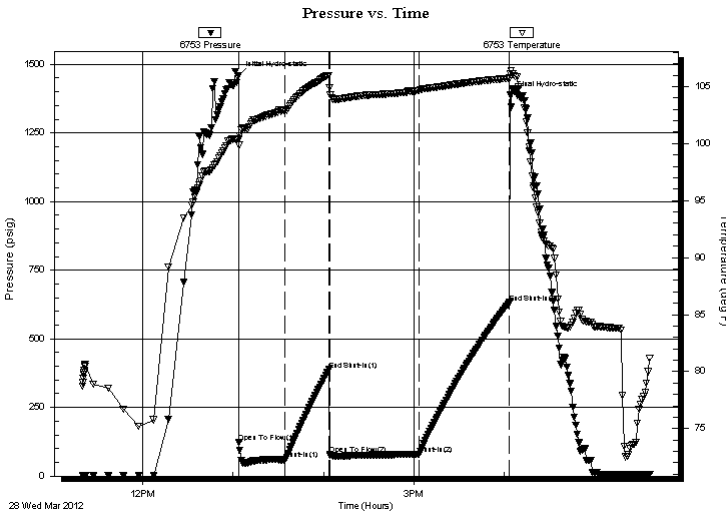
2012.03.28 @ 13:03:30

Time Off Btm:

2012.03.28 @ 16:04:00

**TEST COMMENT:** 30-IFP- BOB in 1 min  
30-ISIP- No Blow  
60-FFP- BOB in 5 sec  
60-FSIP- Blew 5" Never Died

## PRESSURE SUMMARY



Time (Min.)	Pressure (psig)	Temp (deg F)	Annotation
0	1458.38	100.39	Initial Hydro-static
1	124.03	99.84	Open To Flow (1)
31	59.70	102.92	Shut-In(1)
60	387.67	105.96	End Shut-In(1)
61	79.76	104.89	Open To Flow (2)
120	80.46	104.65	Shut-In(2)
180	631.89	105.72	End Shut-In(2)
181	1387.33	106.13	Final Hydro-static

## Recovery

Length (ft)	Description	Volume (bbl)
57.00	O & GCM 20%o 30%g 50%m	0.80
62.00	Gasy MCO 55%g 10%m 35%o	0.87
62.00	Gasy OCM 55%g 20%o 25m	0.87
0.00	Gas to Surface	0.00

## Gas Rates

	Choke (inches)	Pressure (psig)	Gas Rate (Mcf/d)





**TRILOBITE  
TESTING, INC**

# DRILL STEM TEST REPORT

**TOOL DIAGRAM**

Prospect Oil & Gas

**29-15s-12w Russell,KS**

PO Box 837  
Russell KS 67665

**West Beaver Creek #2**

Job Ticket: 46048

**DST#: 1**

ATTN: Brad Hutchison

Test Start: 2012.03.28 @ 11:20:00

## Tool Information

Drill Pipe:	Length: 2962.00 ft	Diameter: 3.80 inches	Volume: 41.55 bbl	Tool Weight: 2500.00 lb
Heavy Wt. Pipe:	Length: 0.00 ft	Diameter: 2.75 inches	Volume: 0.00 bbl	Weight set on Packer: 25000.00 lb
Drill Collar:	Length: 0.00 ft	Diameter: 2.25 inches	Volume: 0.00 bbl	Weight to Pull Loose: 38000.00 lb
			<u>Total Volume: 41.55 bbl</u>	Tool Chased 0.00 ft
Drill Pipe Above KB:	17.00 ft			String Weight: Initial 33000.00 lb
Depth to Top Packer:	2965.00 ft			Final 35000.00 lb
Depth to Bottom Packer:	ft			
Interval between Packers:	60.00 ft			
Tool Length:	80.00 ft			
Number of Packers:	2	Diameter: 6.75 inches		

Tool Comments:

Tool Description	Length (ft)	Serial No.	Position	Depth (ft)	Accum. Lengths
------------------	-------------	------------	----------	------------	----------------

Change Over Sub	1.00			2946.00	
Shut In Tool	5.00			2951.00	
Hydraulic tool	5.00			2956.00	
Packer	4.00			2960.00	20.00 Bottom Of Top Packer
Packer	5.00			2965.00	
Stubb	1.00			2966.00	
Recorder	0.00	8369	Inside	2966.00	
Recorder	0.00	6753	Outside	2966.00	
Perforations	23.00			2989.00	
Change Over Sub	1.00			2990.00	
Blank Spacing	31.00			3021.00	
Change Over Sub	1.00			3022.00	
Bullnose	3.00			3025.00	60.00 Bottom Packers & Anchor

**Total Tool Length: 80.00**



**TRILOBITE  
TESTING, INC**

# DRILL STEM TEST REPORT

**FLUID SUMMARY**

Prospect Oil & Gas

**29-15s-12w Russell,KS**

PO Box 837  
Russell KS 67665

**West Beaver Creek #2**

Job Ticket: 46048

**DST#: 1**

ATTN: Brad Hutchison

Test Start: 2012.03.28 @ 11:20:00

## Mud and Cushion Information

Mud Type: Gel Chem

Cushion Type:

Oil API:

deg API

Mud Weight: 8.00 lb/gal

Cushion Length:

ft

Water Salinity:

ppm

Viscosity: 48.00 sec/qt

Cushion Volume:

bbbl

Water Loss: 7.97 in<sup>3</sup>

Gas Cushion Type:

Resistivity: ohm.m

Gas Cushion Pressure:

psig

Salinity: 1400.00 ppm

Filter Cake: inches

## Recovery Information

Recovery Table

Length ft	Description	Volume bbbl
57.00	O & GCM 20%o 30%g 50%m	0.800
62.00	Gasy MCO 55%g 10%m 35%o	0.870
62.00	Gasy OCM 55%g 20%o 25m	0.870
0.00	Gas to Surface	0.000

Total Length: 181.00 ft

Total Volume: 2.540 bbl

Num Fluid Samples: 0

Num Gas Bombs: 0

Serial #:

Laboratory Name:

Laboratory Location:

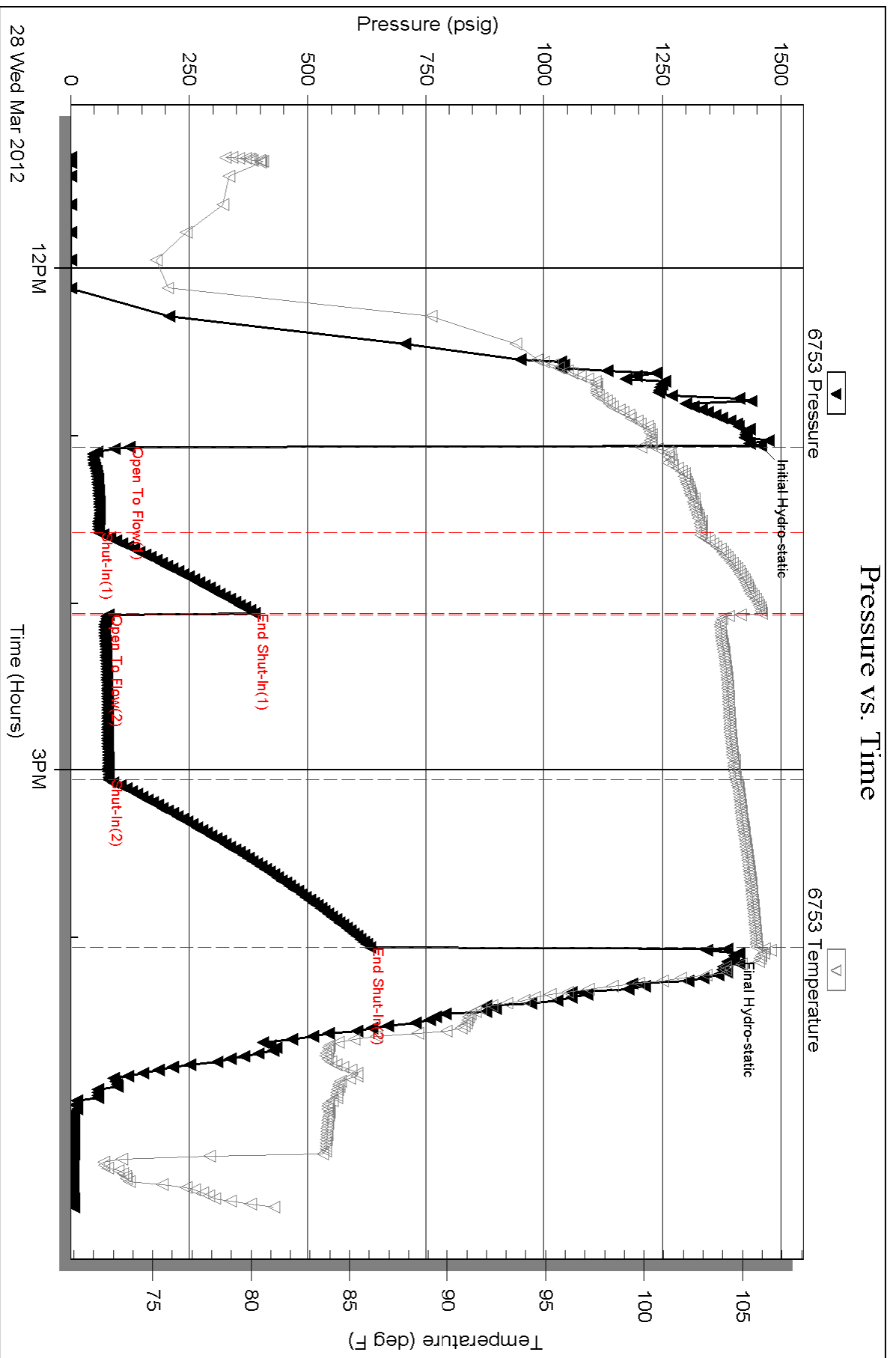
Recovery Comments:

Serial #: 6753

Outside Prospect Oil & Gas

West Beaver Creek #2

DST Test Number: 1



Triobite Testing, Inc

Ref. No: 46048

Printed: 2012.04.04 @ 13:54:47

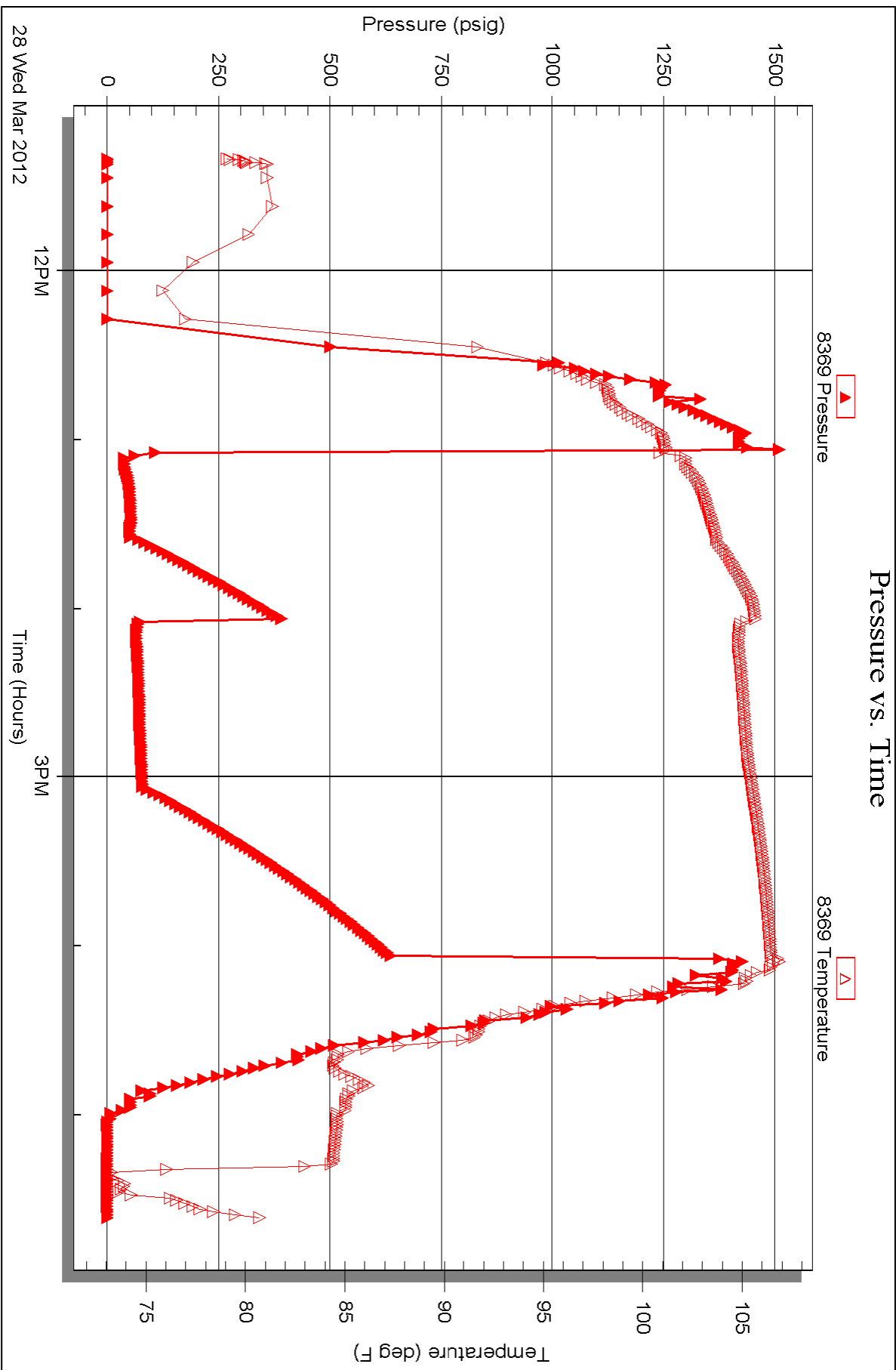
Serial #: 8369

Inside

Prospect Oil & Gas

West Beaver Creek #2

DST Test Number: 1





# TRILOBITE TESTING INC.

P.O. Box 1733 • Hays, Kansas 67601

RECEIVED  
APR 02 2012  
BY: \_\_\_\_\_

## Test Ticket

NO. 46048

Well Name & No. West Beaver Creek #2 Test No. 1 Date 3-28-12  
 Company Prospect Oil & Gas Elevation 1885 KB 1878 GL \_\_\_\_\_  
 Address P.O. Box 837 Russell Ks 67665  
 Co. Rep / Geo. Brad Hutchison Rig Royal #2  
 Location: Sec. 29 Twp. 15<sup>s</sup> Rge. 12<sup>w</sup> Co. Russell State Ks.

Interval Tested 2965-3025 Zone Tested Toronto  
 Anchor Length 60 Drill Pipe Run 2962 Mud Wt. 8.5  
 Top Packer Depth 2960 Drill Collars Run 0 Vis 48  
 Bottom Packer Depth 2965 Wt. Pipe Run 0 WL 8.0  
 Total Depth 3025 Chlorides 1400 ppm System LCM 1

Blow Description 30 FFP - BOB fluid  
30 ISIP - No Blow  
60 FFP - BOB 5 sec. Gas Surface in 15 min.  
60 FSIP - Blew 5 in. (Never Ried)

Rec	Feet of	%gas	%oil	%water	%mud
57	0 + 25 cm	30	20	50	
62	Gas MCO	55	35	10	
62	Gas OCM	55	20	25	
	(Gas to Surface)				
	(IN 15 min)				

Rec Total 181 BHT 105 Gravity \_\_\_\_\_ API RW \_\_\_\_\_ @ \_\_\_\_\_ °F Chlorides \_\_\_\_\_ ppm  
 (A) Initial Hydrostatic 1458  Test 1125 T-On Location 09:40  
 (B) First Initial Flow 124  Jars \_\_\_\_\_ T-Started 11:20  
 (C) First Final Flow 59  Safety Joint \_\_\_\_\_ T-Open 13:05  
 (D) Initial Shut-In 387  Circ Sub \_\_\_\_\_ T-Pulled 16:05  
 (E) Second Initial Flow 79  Hourly Standby \_\_\_\_\_ T-Out 17:38  
 (F) Second Final Flow 80  Mileage 85 RT 119 Comments Did not run test  
 (G) Final Shut-In 631  Sampler \_\_\_\_\_ 3-29-12 Loaded Tools  
 (H) Final Hydrostatic 1387  Straddle \_\_\_\_\_ At 20:45 3-29-12  
 Ruined Shale Packer  
 Ruined Packer  
 Extra Copies

Initial Open 30  
 Initial Shut-In 30  
 Final Flow 60  
 Final Shut-In 60  
 Sub Total 0  
 Total 1244  
 MP/DST Disc'l \_\_\_\_\_  
 Sub Total 1244

Approved By \_\_\_\_\_ Our Representative [Signature]

Trilobite Testing Inc. shall not be liable for damaged of any kind of the property or personnel of the one for whom a test is made, or for any loss suffered or sustained, directly or indirectly, through the use of its equipment, or its statements or opinion concerning the results of any test, tools lost or damaged in the hole shall be paid for at cost by the party for whom the test is made.