



**TRILOBITE  
TESTING, INC.**

# DRILL STEM TEST REPORT

Shakespeare Oil Co. Inc

**15-16-34 Scott, Ks**

202 W Main St.  
Salem, IL 62881

**Janzen 1-15**

Job Ticket: 45710

**DST#: 1**

ATTN: Tim Priest

Test Start: 2012.04.16 @ 18:02:50

## GENERAL INFORMATION:

Formation: **Toronto - LKC "A"**

Deviated: No Whipstock: ft (KB)

Time Tool Opened: 19:34:50

Time Test Ended: 00:20:50

Test Type: Conventional Bottom Hole (Initial)

Tester: Brian Fairbank

Unit No: 41

**Interval: 3986.00 ft (KB) To 4063.00 ft (KB) (TVD)**

Reference Elevations: 3132.00 ft (KB)

Total Depth: 4063.00 ft (KB) (TVD)

3122.00 ft (CF)

Hole Diameter: 7.88 inches Hole Condition: Good

KB to GR/CF: 10.00 ft

**Serial #: 8734 Outside**

Press @ Run Depth: 218.27 psig @ 3993.00 ft (KB)

Capacity: 8000.00 psig

Start Date: 2012.04.16

End Date:

2012.04.17

Last Calib.:

2012.04.17

Start Time: 18:02:51

End Time:

00:20:50

Time On Btm:

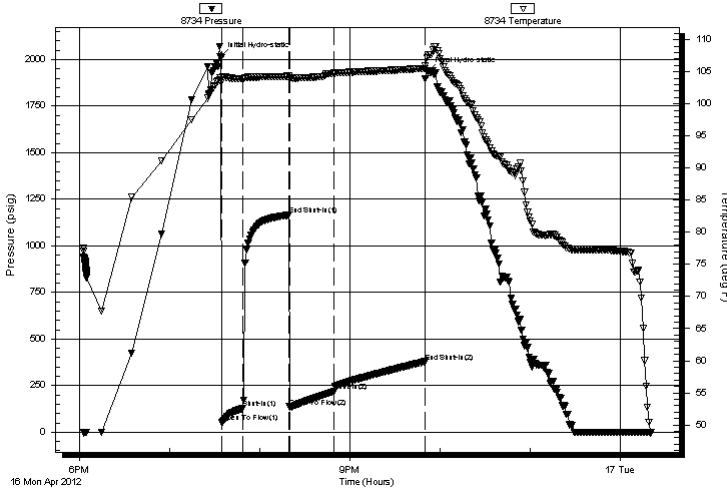
2012.04.16 @ 19:33:50

Time Off Btm:

2012.04.16 @ 21:52:20

**TEST COMMENT:** IFP - BOB 12 min  
ISI - no blow back  
FFP - BOB 15 min  
FSI - BOB 20 min

Pressure vs. Time



## PRESSURE SUMMARY

Time (Min.)	Pressure (psig)	Temp (deg F)	Annotation
0	2013.55	104.03	Initial Hydro-static
1	50.58	103.59	Open To Flow (1)
15	127.42	103.92	Shut-In(1)
46	1164.65	104.32	End Shut-In(1)
46	136.05	103.75	Open To Flow (2)
76	218.27	104.79	Shut-In(2)
136	378.27	105.54	End Shut-In(2)
139	1933.73	107.59	Final Hydro-static

## Recovery

Length (ft)	Description	Volume (bbl)
555.00	MW 85%W, 15%M	6.69
145.00	WM 30%W, 70%M	2.03

## Gas Rates

	Choke (inches)	Pressure (psig)	Gas Rate (Mcf/d)



**TRILOBITE  
TESTING, INC.**

# DRILL STEM TEST REPORT

**FLUID SUMMARY**

Shakespeare Oil Co. Inc

**15-16-34 Scott, Ks**

202 W Main St.  
Salem, IL 62881

**Janzen 1-15**

Job Ticket: 45710

**DST#: 1**

ATTN: Tim Priest

Test Start: 2012.04.16 @ 18:02:50

## Mud and Cushion Information

Mud Type: Gel Chem

Cushion Type:

Oil API:

deg API

Mud Weight: 9.00 lb/gal

Cushion Length:

ft

Water Salinity:

50000 ppm

Viscosity: 51.00 sec/qt

Cushion Volume:

bbbl

Water Loss: 8.79 in<sup>3</sup>

Gas Cushion Type:

Resistivity: ohm.m

Gas Cushion Pressure:

psig

Salinity: 9700.00 ppm

Filter Cake: inches

## Recovery Information

Recovery Table

Length ft	Description	Volume bbbl
555.00	MW 85%W, 15%M	6.692
145.00	WM 30%W, 70%M	2.034

Total Length: 700.00 ft

Total Volume: 8.726 bbl

Num Fluid Samples: 0

Num Gas Bombs: 0

Serial #:

Laboratory Name:

Laboratory Location:

Recovery Comments:

Serial #: 8734

Outside Shakespeare Oil Co. Inc

Janzen 1-15

DST Test Number: 1

### Pressure vs. Time

