



## DRILL STEM TEST REPORT

Prepared For: **Baird Oil Company, LLC**

PO Box 428  
Logan KS 67646

ATTN: Richard Bell

### **Esslinger Ranch 1-26**

### **26-3s-22w Norton,KS**

Start Date: 2012.04.16 @ 04:07:00

End Date: 2012.04.16 @ 10:07:00

Job Ticket #: 46311                      DST #: 1

Trilobite Testing, Inc  
PO Box 362 Hays, KS 67601  
ph: 785-625-4778 fax: 785-625-5620

Printed: 2012.04.19 @ 12:02:42



**TRILOBITE TESTING, INC.**

# DRILL STEM TEST REPORT

Baird Oil Company, LLC

**26-3s-22w Norton, KS**

PO Box 428  
Logan KS 67646

**Esslinger Ranch 1-26**

ATTN: Richard Bell

Job Ticket: 46311

**DST#: 1**

Test Start: 2012.04.16 @ 04:07:00

## GENERAL INFORMATION:

Formation: **KC "D"**  
 Deviated: No Whipstock: ft (KB)  
 Test Type: Conventional Bottom Hole (Initial)  
 Time Tool Opened: 05:36:00  
 Tester: Cody Bloedorn  
 Time Test Ended: 10:07:00  
 Unit No: 41  
 Interval: **3628.00 ft (KB) To 3644.00 ft (KB) (TVD)**  
 Reference Elevations: 2354.00 ft (KB)  
 Total Depth: 3644.00 ft (KB) (TVD)  
 2348.00 ft (CF)  
 Hole Diameter: 7.88 inches  
 Hole Condition: Fair  
 KB to GR/CF: 6.00 ft

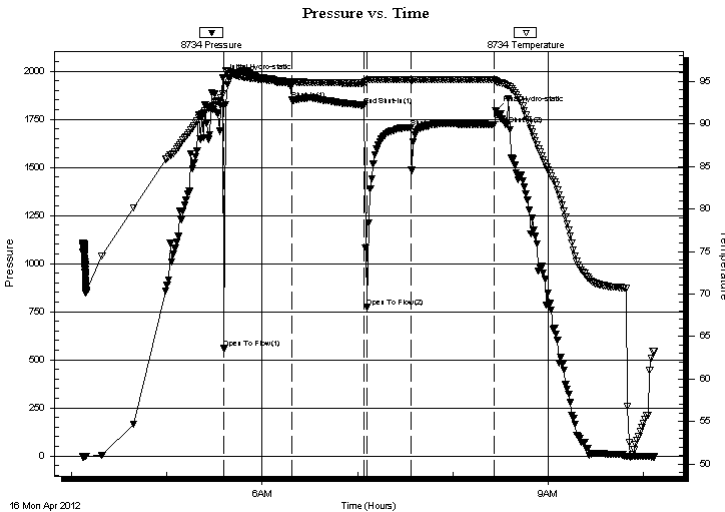
## Serial #: 8734

**Outside**

Press @ Run Depth: 1706.55 psig @ 3629.00 ft (KB) Capacity: 8000.00 psig  
 Start Date: 2012.04.16 End Date: 2012.04.16 Last Calib.: 2012.04.16  
 Start Time: 04:07:01 End Time: 10:07:00 Time On Btm: 2012.04.16 @ 05:35:00  
 Time Off Btm: 2012.04.16 @ 08:27:00

**TEST COMMENT:** 45 - IF- 2" blow instantly, dead at 33 Min.  
 45 - ISI- No blow back.  
 30 - FF- No blow  
 45 - FSI - No blow

## PRESSURE SUMMARY



Time (Min.)	Pressure (psig)	Temp (deg F)	Annotation
0	1963.62	93.50	Initial Hydro-static
1	558.73	95.15	Open To Flow (1)
44	1850.09	94.96	Shut-In(1)
89	1822.44	94.80	End Shut-In(1)
91	771.73	95.10	Open To Flow (2)
119	1706.55	95.18	Shut-In(2)
171	1722.95	95.22	End Shut-In(2)
172	1792.76	95.03	Final Hydro-static

## Recovery

Length (ft)	Description	Volume (bbl)
62.00	Mud	0.30

## Gas Rates

Choke (inches)	Pressure (psig)	Gas Rate (Mcf/d)





**TRILOBITE  
TESTING, INC.**

# DRILL STEM TEST REPORT

**TOOL DIAGRAM**

Baird Oil Company, LLC

**26-3s-22w Norton, KS**

PO Box 428  
Logan KS 67646

**Esslinger Ranch 1-26**

Job Ticket: 46311

**DST#: 1**

ATTN: Richard Bell

Test Start: 2012.04.16 @ 04:07:00

## Tool Information

Drill Pipe:	Length: 3492.00 ft	Diameter: 3.80 inches	Volume: 48.98 bbl	Tool Weight: 2500.00 lb
Heavy Wt. Pipe:	Length: 0.00 ft	Diameter: 0.00 inches	Volume: 0.00 bbl	Weight set on Packer: 25000.00 lb
Drill Collar:	Length: 124.00 ft	Diameter: 2.25 inches	Volume: 0.61 bbl	Weight to Pull Loose: 54000.00 lb
			<u>Total Volume: 49.59 bbl</u>	Tool Chased 0.00 ft
Drill Pipe Above KB:	17.00 ft			String Weight: Initial 50000.00 lb
Depth to Top Packer:	3628.00 ft			Final 50000.00 lb
Depth to Bottom Packer:	ft			
Interval between Packers:	16.00 ft			
Tool Length:	45.00 ft			
Number of Packers:	2	Diameter: 6.75 inches		

Tool Comments:

## Tool Description

Tool Description	Length (ft)	Serial No.	Position	Depth (ft)	Accum. Lengths
Change Over Sub	1.00			3600.00	
Shut In Tool	5.00			3605.00	
Hydraulic tool	5.00			3610.00	
Jars	5.00			3615.00	
Safety Joint	3.00			3618.00	
Packer	5.00			3623.00	29.00 Bottom Of Top Packer
Packer	5.00			3628.00	
Stubb	1.00			3629.00	
Recorder	0.00	6669	Inside	3629.00	
Recorder	0.00	8734	Outside	3629.00	
Perforations	12.00			3641.00	
Bullnose	3.00			3644.00	16.00 Bottom Packers & Anchor

**Total Tool Length: 45.00**



**TRILOBITE  
TESTING, INC.**

# DRILL STEM TEST REPORT

**FLUID SUMMARY**

Baird Oil Company, LLC

**26-3s-22w Norton, KS**

PO Box 428  
Logan KS 67646

**Esslinger Ranch 1-26**

Job Ticket: 46311

**DST#: 1**

ATTN: Richard Bell

Test Start: 2012.04.16 @ 04:07:00

## Mud and Cushion Information

Mud Type: Gel Chem

Cushion Type:

Oil API:

deg API

Mud Weight: 9.00 lb/gal

Cushion Length:

ft

Water Salinity:

ppm

Viscosity: 46.00 sec/qt

Cushion Volume:

bbbl

Water Loss: 7.98 in<sup>3</sup>

Gas Cushion Type:

Resistivity: ohm.m

Gas Cushion Pressure:

psig

Salinity: 2000.00 ppm

Filter Cake: inches

## Recovery Information

Recovery Table

Length ft	Description	Volume bbbl
62.00	Mud	0.305

Total Length: 62.00 ft      Total Volume: 0.305 bbl

Num Fluid Samples: 0

Num Gas Bombs: 0

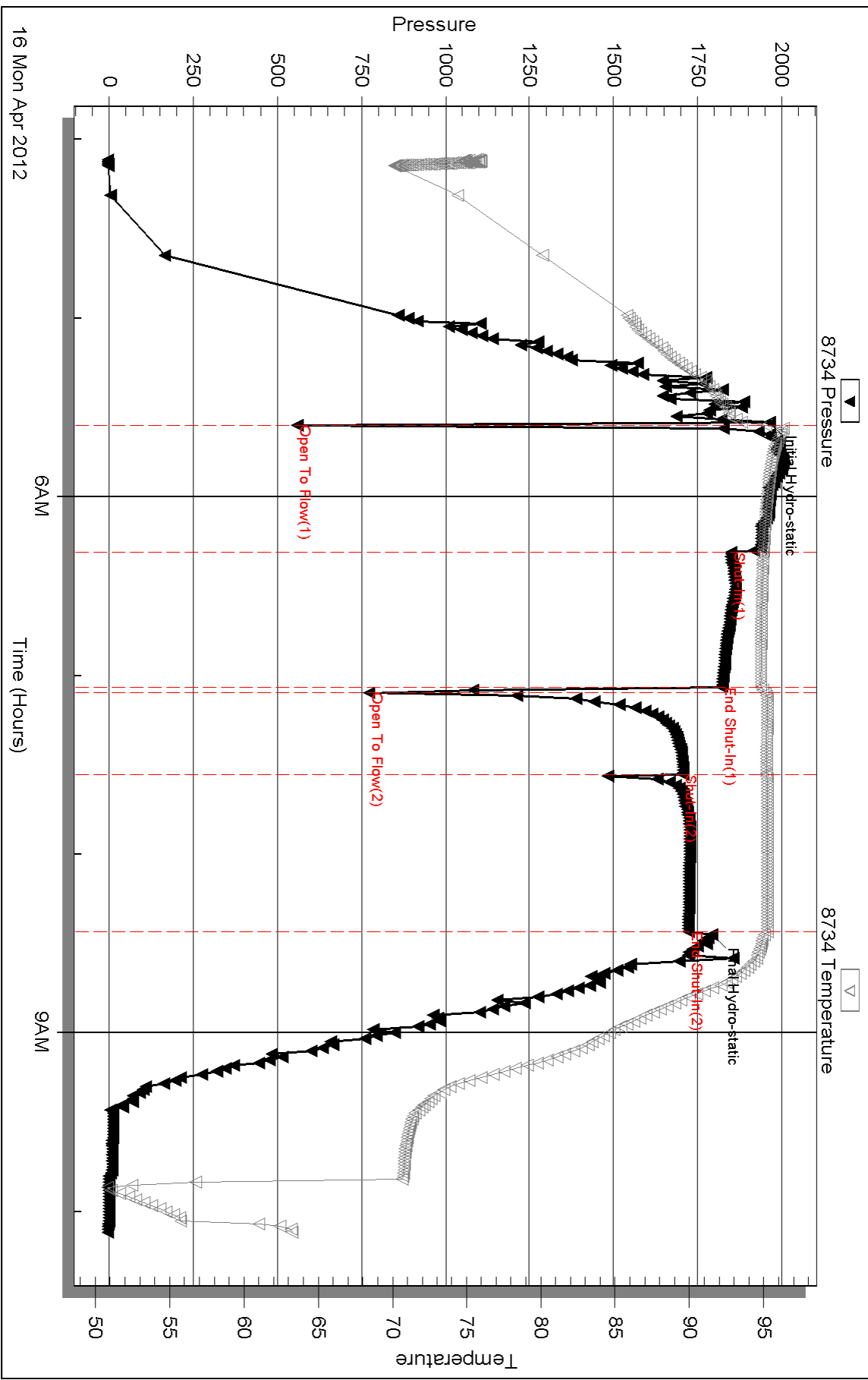
Serial #:

Laboratory Name:

Laboratory Location:

Recovery Comments:

### Pressure vs. Time



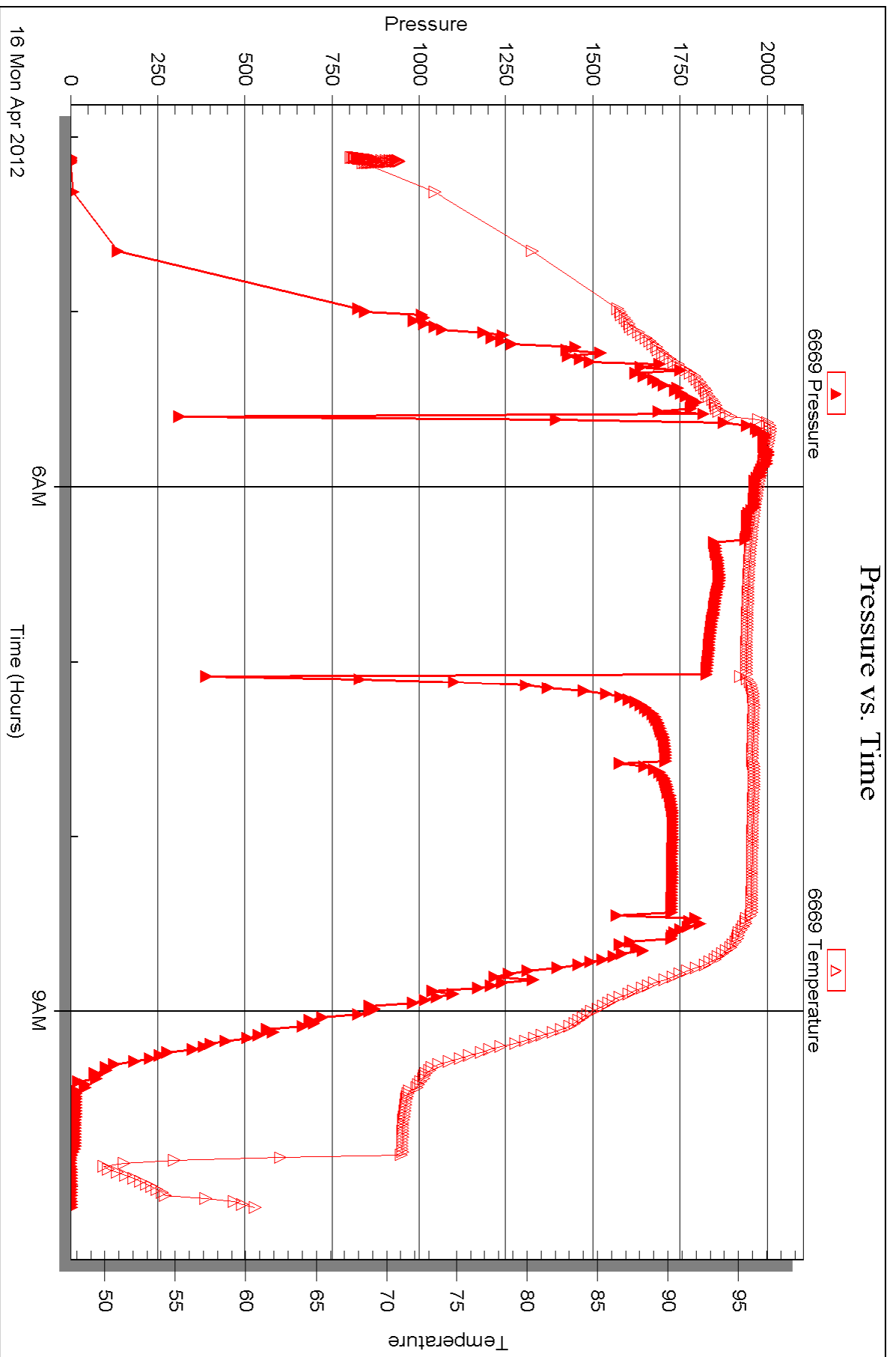
Serial #: 6669

Inside

Baird Oil Company, LLC

Esslinger Ranch 1-26

DST Test Number: 1





## DRILL STEM TEST REPORT

Prepared For: **Baird Oil Company, LLC**

PO Box 428  
Logan KS 67646

ATTN: Richard Bell

### **Esslinger Ranch 1-26**

### **26-3s-22w Norton,KS**

Start Date: 2012.04.17 @ 11:01:24

End Date: 2012.04.17 @ 17:21:09

Job Ticket #: 46120                      DST #: 2

Trilobite Testing, Inc

PO Box 362 Hays, KS 67601

ph: 785-625-4778 fax: 785-625-5620

Printed: 2012.04.19 @ 12:01:39





**TRILOBITE  
TESTING, INC.**

# DRILL STEM TEST REPORT

Baird Oil Company, LLC

**26-3s-22w Norton, KS**

PO Box 428  
Logan KS 67646

**Esslinger Ranch 1-26**

ATTN: Richard Bell

Job Ticket: 46120

**DST#: 2**

Test Start: 2012.04.17 @ 11:01:24

## GENERAL INFORMATION:

Formation: **Marm.**

Deviated: No Whipstock: ft (KB)

Time Tool Opened: 12:20:54

Time Test Ended: 17:21:09

Test Type: Conventional Bottom Hole (Initial)

Tester: Kevin Mack

Unit No: 43

**Interval: 3844.00 ft (KB) To 3900.00 ft (KB) (TVD)**

Reference Elevations: 2354.00 ft (KB)

Total Depth: 3900.00 ft (KB) (TVD)

2348.00 ft (CF)

Hole Diameter: 7.88 inches Hole Condition: Poor

KB to GR/CF: 6.00 ft

**Serial #: 8648**

**Inside**

Press @ Run Depth: 83.86 psig @ 3845.00 ft (KB)

Capacity: 8000.00 psig

Start Date: 2012.04.17

End Date:

2012.04.17

Last Calib.:

2012.04.17

Start Time: 11:01:29

End Time:

17:21:08

Time On Btm:

2012.04.17 @ 12:20:09

Time Off Btm:

2012.04.17 @ 15:25:09

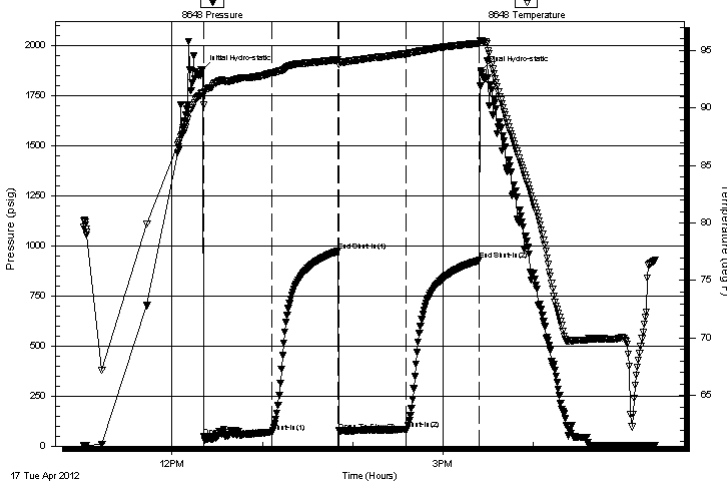
**TEST COMMENT:** IF- 1/2" Blow built to 4 1/4"

IS- No Return

FF- Surface Blow built to 5 1/2"

FS- No Return

Pressure vs. Time



PRESSURE SUMMARY

Time (Min.)	Pressure (psig)	Temp (deg F)	Annotation
0	1880.49	91.32	Initial Hydro-static
1	47.61	90.22	Open To Flow (1)
46	69.89	93.01	Shut-In(1)
90	974.60	94.18	End Shut-In(1)
91	76.41	93.77	Open To Flow (2)
135	83.86	94.69	Shut-In(2)
184	928.52	95.61	End Shut-In(2)
185	1875.62	95.86	Final Hydro-static

Recovery

Length (ft)	Description	Volume (bbl)
60.00	OCWM 15o 85M Trace Water	0.30
60.00	OCWM 30o 70M Trace Water	0.30
50.00	Free Oil 100o	0.70

Gas Rates

Choke (inches)	Pressure (psig)	Gas Rate (Mcf/d)





**TRILOBITE  
TESTING, INC.**

# DRILL STEM TEST REPORT

**TOOL DIAGRAM**

Baird Oil Company, LLC

**26-3s-22w Norton, KS**

PO Box 428  
Logan KS 67646

**Esslinger Ranch 1-26**

Job Ticket: 46120

**DST#: 2**

ATTN: Richard Bell

Test Start: 2012.04.17 @ 11:01:24

## Tool Information

Drill Pipe:	Length: 3714.00 ft	Diameter: 3.80 inches	Volume: 52.10 bbl	Tool Weight: 2500.00 lb
Heavy Wt. Pipe:	Length: 0.00 ft	Diameter: 0.00 inches	Volume: 0.00 bbl	Weight set on Packer: 25000.00 lb
Drill Collar:	Length: 120.00 ft	Diameter: 2.25 inches	Volume: 0.59 bbl	Weight to Pull Loose: 55000.00 lb
			<u>Total Volume: 52.69 bbl</u>	Tool Chased ft
Drill Pipe Above KB:	19.00 ft			String Weight: Initial 50000.00 lb
Depth to Top Packer:	3844.00 ft			Final 50000.00 lb
Depth to Bottom Packer:	ft			
Interval between Packers:	56.00 ft			
Tool Length:	85.00 ft			
Number of Packers:	2	Diameter: 6.75 inches		

Tool Comments:

## Tool Description

**Length (ft) Serial No. Position Depth (ft) Accum. Lengths**

Tool Description	Length (ft)	Serial No.	Position	Depth (ft)	Accum. Lengths
Change Over Sub	1.00			3816.00	
Shut In Tool	5.00			3821.00	
Hydraulic tool	5.00			3826.00	
Jars	5.00			3831.00	
Safety Joint	3.00			3834.00	
Packer	5.00			3839.00	29.00 Bottom Of Top Packer
Packer	5.00			3844.00	
Stubb	1.00			3845.00	
Recorder	0.00	8648	Inside	3845.00	
Recorder	0.00	6799	Inside	3845.00	
Perforations	17.00			3862.00	
Change Over Sub	1.00			3863.00	
Drill Pipe	31.00			3894.00	
Change Over Sub	1.00			3895.00	
Bullnose	5.00			3900.00	56.00 Bottom Packers & Anchor

**Total Tool Length: 85.00**



**TRILOBITE  
TESTING, INC.**

# DRILL STEM TEST REPORT

**FLUID SUMMARY**

Baird Oil Company, LLC

**26-3s-22w Norton, KS**

PO Box 428  
Logan KS 67646

**Esslinger Ranch 1-26**

Job Ticket: 46120

**DST#: 2**

ATTN: Richard Bell

Test Start: 2012.04.17 @ 11:01:24

## Mud and Cushion Information

Mud Type: Gel Chem

Cushion Type:

Oil API:

19 deg API

Mud Weight: 9.00 lb/gal

Cushion Length:

ft

Water Salinity:

ppm

Viscosity: 80.00 sec/qt

Cushion Volume:

bbbl

Water Loss: 7.19 in<sup>3</sup>

Gas Cushion Type:

Resistivity: 0.00 ohm.m

Gas Cushion Pressure:

psig

Salinity: 1900.00 ppm

Filter Cake: 2.00 inches

## Recovery Information

Recovery Table

Length ft	Description	Volume bbl
60.00	OCWM 15o 85M Trace Water	0.295
60.00	OCWM 30o 70M Trace Water	0.295
50.00	Free Oil 100o	0.701

Total Length: 170.00 ft      Total Volume: 1.291 bbl

Num Fluid Samples: 0

Num Gas Bombs: 0

Serial #:

Laboratory Name:

Laboratory Location:

Recovery Comments: Oil API 21 @ 80 deg = 19

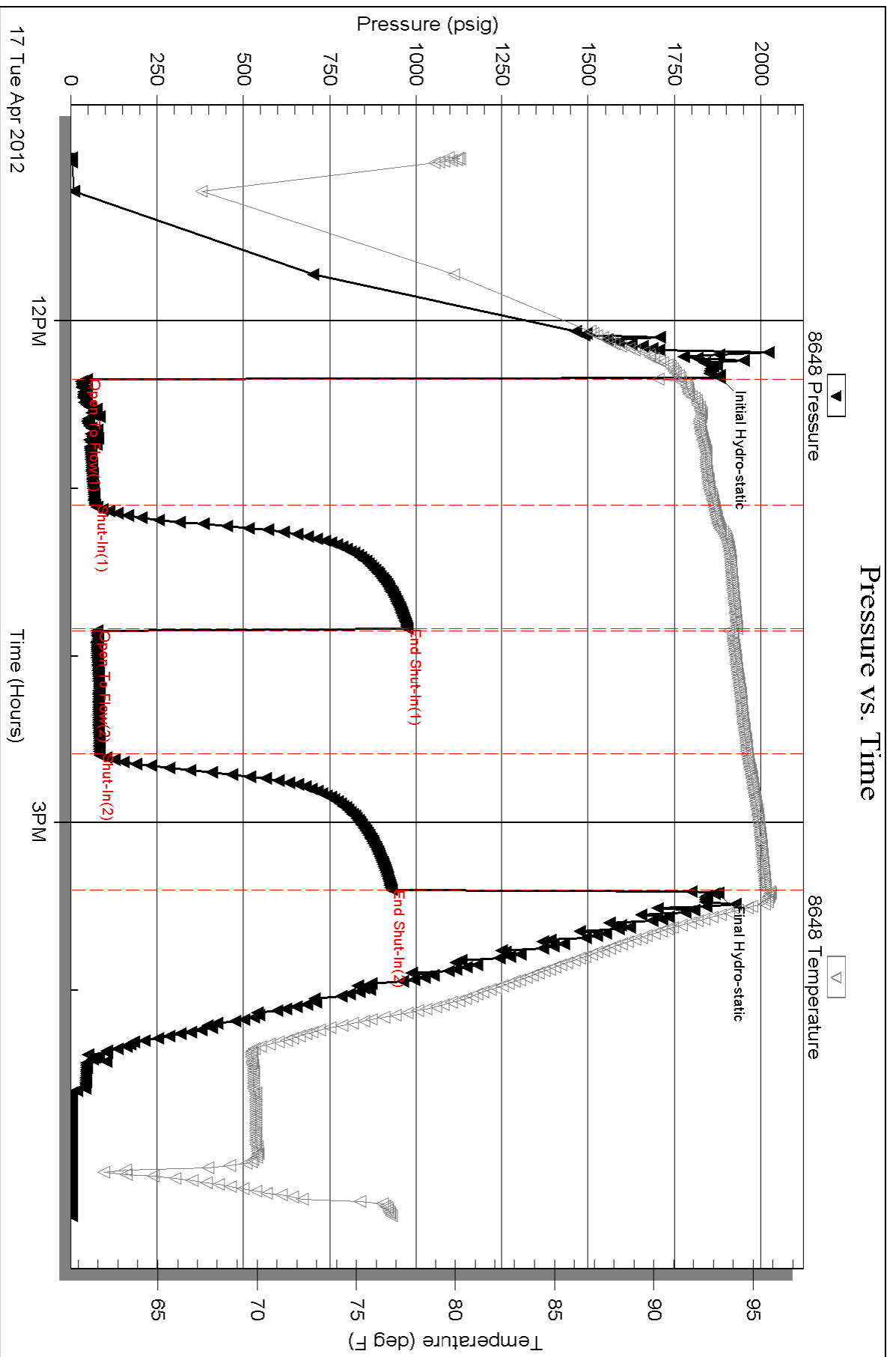
Serial #: 8648

Inside

Baird Oil Company, LLC

Esslinger Ranch 1-26

DST Test Number: 2



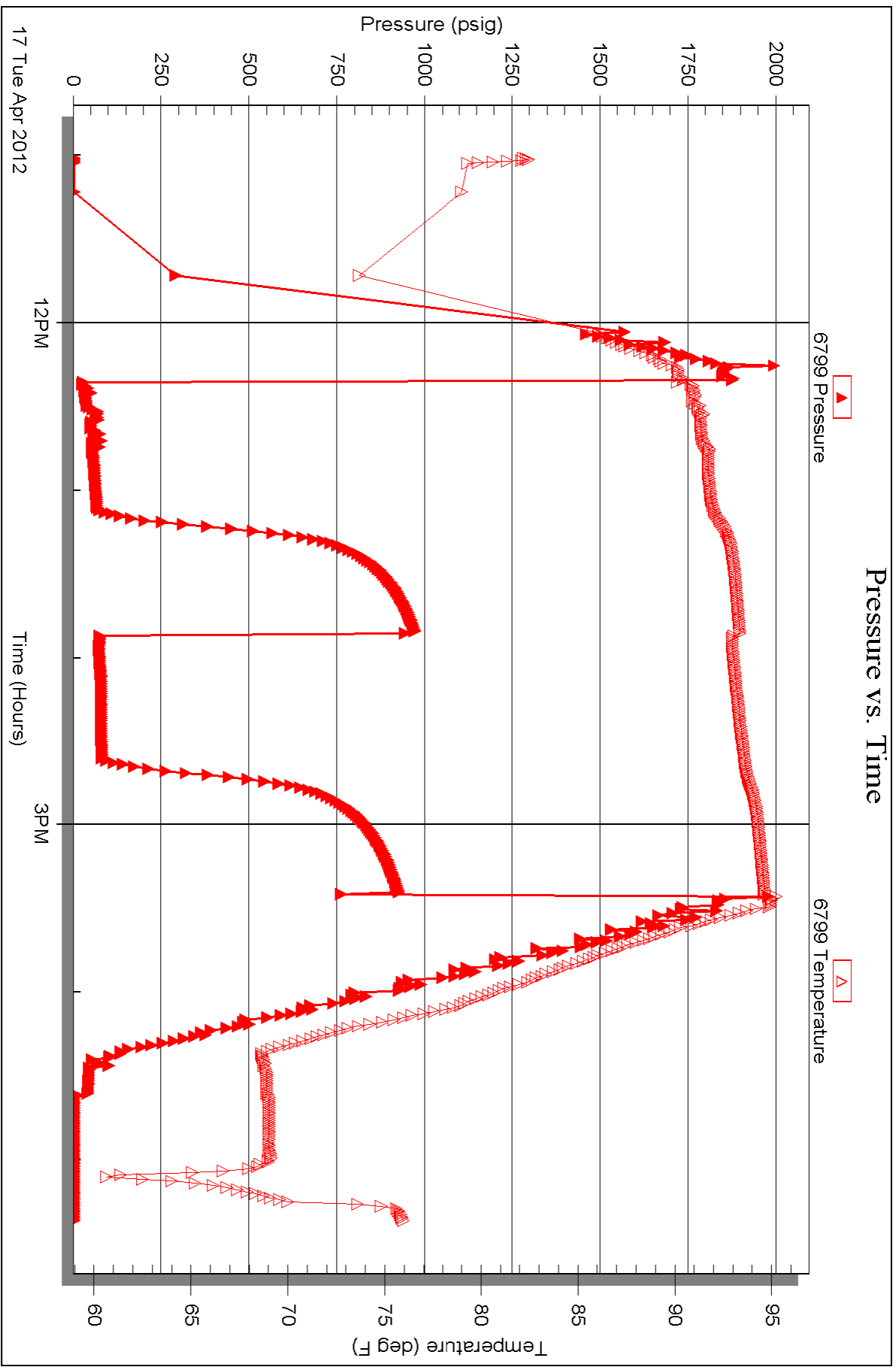
Serial #: 6799

Inside

Baird Oil Company, LLC

Esslinger Ranch 1-26

DST Test Number: 2





# TRILOBITE TESTING INC.

P.O. Box 1733 • Hays, Kansas 67601

RECEIVED  
APR 16 2012

## Test Ticket

NO. 46311

Well Name & No. Esslinger Ranch, Inc #1-26 Test No. 1 Date 4-16-12  
 Company Beard Oil Company, LLC Elevation 2354 KB 2348 GL  
 Address Po Box 428, Logan KS, 67646  
 Co. Rep / Geo. Richard Bell Rig WW8  
 Location: Sec. 26 Twp. 35 Rge. 22W Co. Norton State KS

Interval Tested 3628-3644 Zone Tested "D"  
 Anchor Length 16' Drill Pipe Run 3492 Mud Wt. 9.1  
 Top Packer Depth 3623 Drill Collars Run 124' Vis 46  
 Bottom Packer Depth 3628 Wt. Pipe Run — WL 8.0  
 Total Depth 3644 Chlorides 2,000 ppm System LCM —

Blow Description IF- 2" blow instantly, dead in 23 Min.  
ISI- No blow back  
FF- No blow back  
FSL- No blow back

Rec	Feet of	%gas	%oil	%water	%mud
<u>62</u>	<u>Mud</u>			<u>100</u>	
Rec	Feet of	%gas	%oil	%water	%mud
Rec	Feet of	%gas	%oil	%water	%mud
Rec	Feet of	%gas	%oil	%water	%mud
Rec	Feet of	%gas	%oil	%water	%mud

Rec Total 62' BHT Gravity — API RW — @ — °F Chlorides — ppm

(A) Initial Hydrostatic <u>1963</u>	<input checked="" type="checkbox"/> Test <u>1150</u>	T-On Location <u>3:22am</u>
(B) First Initial Flow <u>558</u>	<input checked="" type="checkbox"/> Jars <u>250</u>	T-Started <u>4:07am</u>
(C) First Final Flow <u>1850</u>	<input checked="" type="checkbox"/> Safety Joint <u>75</u>	T-Open <u>8:37am</u>
(D) Initial Shut-In <u>1822</u>	<input type="checkbox"/> Circ Sub	T-Pulled <u>8:22am</u>
(E) Second Initial Flow <u>771</u>	<input type="checkbox"/> Hourly Standby	T-Out <u>10:07am</u>
(F) Second Final Flow <u>1706</u>	<input checked="" type="checkbox"/> Mileage <u>98 RT 151.90</u>	Comments
(G) Final Shut-In <u>1722</u>	<input type="checkbox"/> Sampler	
(H) Final Hydrostatic <u>1792</u>	<input type="checkbox"/> Straddle	

Initial Open 45  Ruined Shale Packer  
 Initial Shut-In 45  Ruined Packer  
 Final Flow 30  Extra Copies  
 Final Shut-In 45  Extra Recorder  
 Sub Total 0  
 Total 11626.90  
 MP/DST Disc't  
 Sub Total 11626.90

Approved By \_\_\_\_\_ Our Representative Cody Ble

Trilobite Testing Inc. shall not be liable for damaged of any kind of the property or personnel of the one for whom a test is made, or for any loss suffered or sustained, directly or indirectly, through the use of its equipment, or its statements or opinion concerning the results of any test, tools lost or damaged in the hole shall be paid for at cost by the party for whom the test is made.



# TRILOBITE TESTING INC.

P.O. Box 1733 • Hays, Kansas 67601

RECEIVED  
APR 19 2012

## Test Ticket

NO. 46120

Well Name & No. Eglinger Ranch, Inc. #1-28 Test No. 2 Date 4-17-12  
 Company Basco Oil Company, LLC Elevation 2354 KB 2349 GL  
 Address 113 W. Main Logan, KS 67646  
 Co. Rep / Geo. Rich Bell Rig WWT#8  
 Location: Sec. 26 Twp. 3s Rge. 22w Co. Norton State KS

Interval Tested 3844-3900 Zone Tested Marmaton  
 Anchor Length 56' Drill Pipe Run 3714 Mud Wt. 9.1  
 Top Packer Depth 3840 Drill Collars Run 120' Vis 80  
 Bottom Packer Depth 3844 Wt. Pipe Run Ø WL 7.2  
 Total Depth 3900 Chlorides 1,900 ppm System LCM 8#  
 Blow Description IF-1/2" Blow built to 4 1/4  
IS- No Return  
FF- Surface Blow built to 5 1/2  
FS- 1/6 Return

Rec	Feet of	%gas	%oil	%water	%mud
<u>50</u>	Feet of <u>Free Oil</u>	<u>100</u>			
<u>60</u>	Feet of <u>OCWM</u>	<u>30</u>	<u>trace</u>	<u>70</u>	
<u>60</u>	Feet of <u>OCWM</u>	<u>15</u>	<u>trace</u>	<u>85</u>	
Rec	Feet of	%gas	%oil	%water	%mud
Rec	Feet of	%gas	%oil	%water	%mud

Rec Total 170 BHT 96 Gravity 19 API RW - @ - °F Chlorides - ppm  
 (A) Initial Hydrostatic 1880  Test 1150 T-On Location 10:00 AM  
 (B) First Initial Flow 47  Jars 250 T-Started 11:01 AM  
 (C) First Final Flow 69  Safety Joint 75 T-Open 12:21 PM  
 (D) Initial Shut-In 974  Circ Sub NIC T-Pulled 3:21 PM  
 (E) Second Initial Flow 76  Hourly Standby T-Out 5:22 PM  
 (F) Second Final Flow 83  Mileage 98 RT 151.90 Comments \_\_\_\_\_  
 (G) Final Shut-In 928  Sampler \_\_\_\_\_  
 (H) Final Hydrostatic 1875  Straddle \_\_\_\_\_  
 Ruined Shale Packer \_\_\_\_\_  
 Ruined Packer \_\_\_\_\_

Initial Open 45  Extra Packer \_\_\_\_\_  
 Initial Shut-In 45  Extra Recorder \_\_\_\_\_  
 Final Flow 45  Day Standby \_\_\_\_\_  
 Final Shut-In 45  Accessibility \_\_\_\_\_  
 Sub Total 11626.90 MP/DST Disc't \_\_\_\_\_

Approved By \_\_\_\_\_ Our Representative [Signature]  
 Trilobite Testing Inc. shall not be liable for damaged of any kind of the property or personnel of the one for whom a test is made, or for any loss suffered or sustained, directly or indirectly, through the use of its equipment, or its statements or opinion concerning the results of any test, tools lost or damaged in the hole shall be paid for at cost by the party for whom the test is made.