



TRILOBITE TESTING, INC.

DRILL STEM TEST REPORT

Shakespear Oil Co, Inc

21 14s 32w Logan, Ks

202 W. Main St.
Salem, IL 62881

Ottley 1-21

Job Ticket: 46677

DST#: 4

ATTN: Tim Priest

Test Start: 2012.04.02 @ 17:56:00

GENERAL INFORMATION:

Formation: **LKC "E-F"**

Deviated: No Whipstock: ft (KB)

Time Tool Opened: 19:48:00

Time Test Ended: 04:55:00

Test Type: Conventional Bottom Hole (Reset)

Tester: Bradley Waler

Unit No: 53

Interval: 3845.00 ft (KB) To 3861.00 ft (KB) (TVD)

Reference Elevations: 2763.00 ft (KB)

Total Depth: 3861.00 ft (KB) (TVD)

2753.00 ft (CF)

Hole Diameter: 7.88 inches Hole Condition: Good

KB to GR/CF: 10.00 ft

Serial #: 8678

Inside

Press @ Run Depth: 195.26 psig @ 3846.00 ft (KB)

Capacity: 8000.00 psig

Start Date: 2012.04.02

End Date:

2012.04.03

Last Calib.:

2012.04.03

Start Time:

17:56:05

End Time:

04:55:00

Time On Btm:

2012.04.02 @ 19:47:45

Time Off Btm:

2012.04.02 @ 22:35:00

TEST COMMENT:

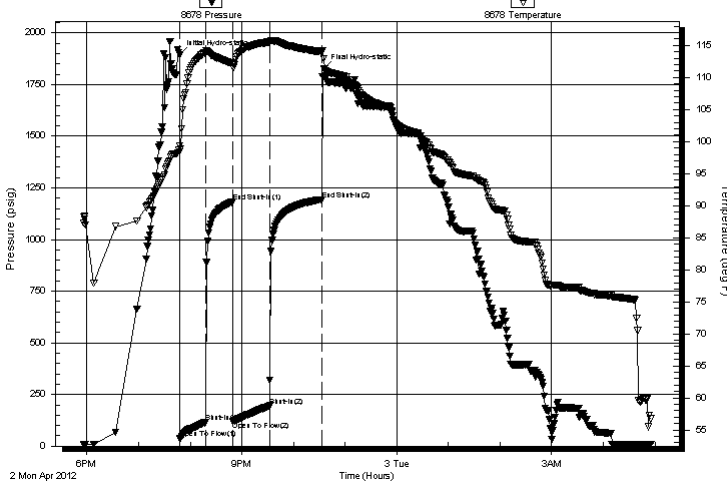
IF: BOB @ 28 min.

IS: No return.

FF: BOB @ 28 min.

FS: Surface blow @ 10 min, Died @ 30 min.

Pressure vs. Time



PRESSURE SUMMARY

Time (Min.)	Pressure (psig)	Temp (deg F)	Annotation
0	1893.24	99.34	Initial Hydro-static
1	36.45	98.44	Open To Flow (1)
30	115.82	113.87	Shut-In(1)
62	1182.30	112.20	End Shut-In(1)
62	119.10	111.67	Open To Flow (2)
105	195.26	115.51	Shut-In(2)
165	1193.63	114.00	End Shut-In(2)
168	1828.52	112.95	Final Hydro-static

Recovery

Length (ft)	Description	Volume (bbl)
390.00	mcw 10m 90w (oil spots)	3.26

* Recovery from multiple tests

Gas Rates

Choke (inches)	Pressure (psig)	Gas Rate (Mcf/d)



**TRILOBITE
TESTING, INC.**

DRILL STEM TEST REPORT

FLUID SUMMARY

Shakespear Oil Co, Inc

21 14s 32w Logan, Ks

202 W. Main St.
Salem, IL 62881

Ottley 1-21

Job Ticket: 46677

DST#: 4

ATTN: Tim Priest

Test Start: 2012.04.02 @ 17:56:00

Mud and Cushion Information

Mud Type: Gel Chem

Cushion Type:

Oil API:

0 deg API

Mud Weight: 9.00 lb/gal

Cushion Length:

ft

Water Salinity:

82000 ppm

Viscosity: 50.00 sec/qt

Cushion Volume:

bbbl

Water Loss: 8.79 in³

Gas Cushion Type:

Resistivity: ohm.m

Gas Cushion Pressure:

psig

Salinity: 4400.00 ppm

Filter Cake: 1.00 inches

Recovery Information

Recovery Table

Length ft	Description	Volume bbl
390.00	mcw 10m 90w (oil spots)	3.261

Total Length: 390.00 ft Total Volume: 3.261 bbl

Num Fluid Samples: 0

Num Gas Bombs: 0

Serial #:

Laboratory Name:

Laboratory Location:

Recovery Comments: rw is .130 @ 51F = 82000ppm

Serial #: 8678

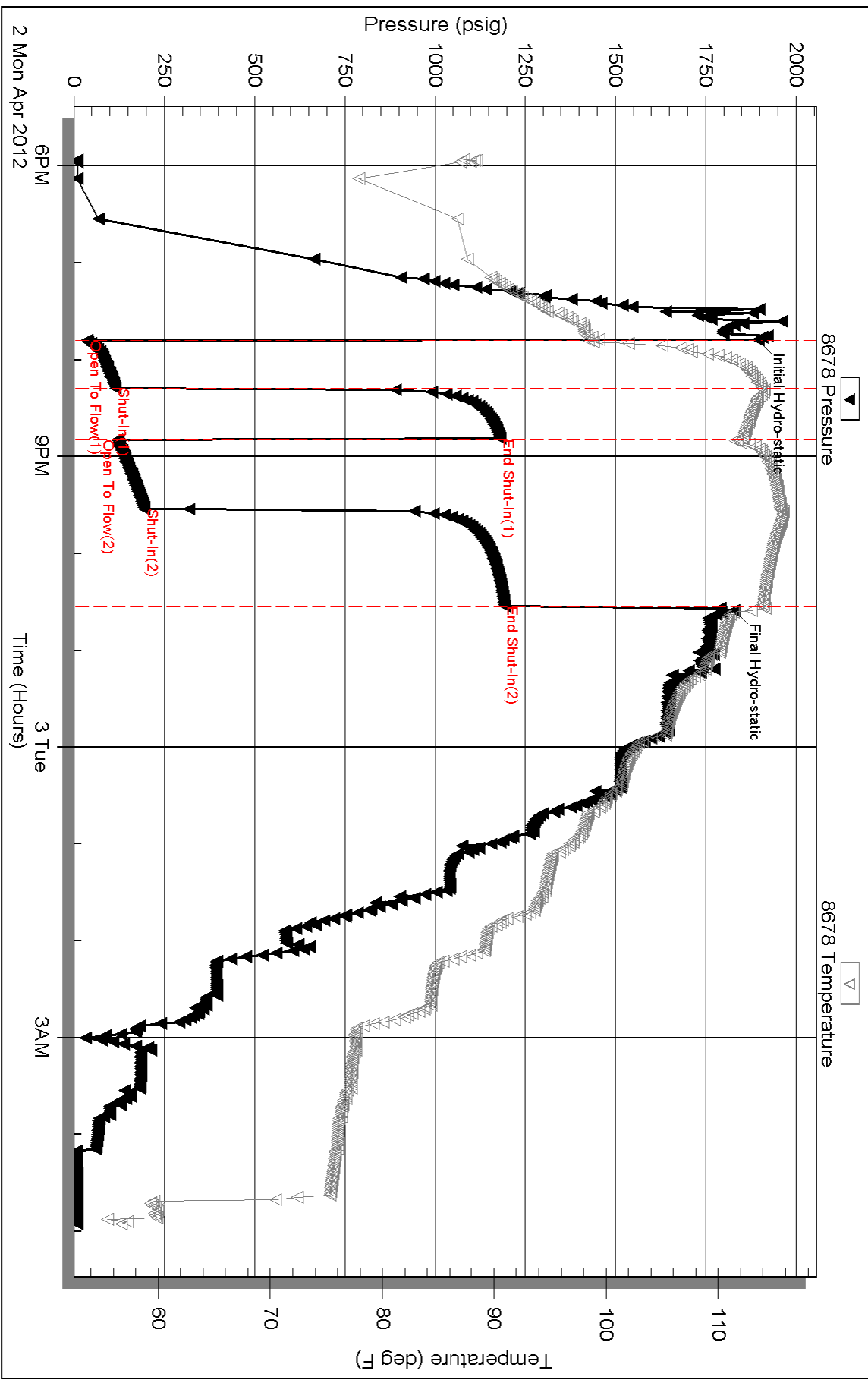
Inside

Shakespeare Oil Co, Inc

Oilley 1-21

DST Test Number: 4

Pressure vs. Time



Triobite Testing, Inc

Ref. No: 46677

Printed: 2012.04.03 @ 08:18:33