



**TRILOBITE TESTING, INC.**

# DRILL STEM TEST REPORT

Caerus Kansas LLC

**31 17s 13w Barton**

P. O. Box 1378  
Hays KS 67601

**Mortimer 31-32**

ATTN: Brian Karlin

Job Ticket: 47369

**DST#: 4**

Test Start: 2012.04.25 @ 02:55:10

## GENERAL INFORMATION:

Formation: **Arbuckle**

Deviated: No Whipstock: ft (KB)

Time Tool Opened: 04:53:05

Time Test Ended: 12:16:35

Test Type: Conventional Bottom Hole (Reset)

Tester: Ray Schwager

Unit No: 42

**Interval: 3355.00 ft (KB) To 3369.00 ft (KB) (TVD)**

Reference Elevations: 1864.00 ft (KB)

Total Depth: 3369.00 ft (KB) (TVD)

1851.00 ft (CF)

Hole Diameter: 7.85 inches Hole Condition: Fair

KB to GR/CF: 13.00 ft

**Serial #: 6625 Inside**

Press @ Run Depth: 360.88 psig @ 3356.00 ft (KB)

Capacity: 8000.00 psig

Start Date: 2012.04.25

End Date:

2012.04.25

Last Calib.:

2012.04.25

Start Time: 02:55:10

End Time:

12:16:35

Time On Btm:

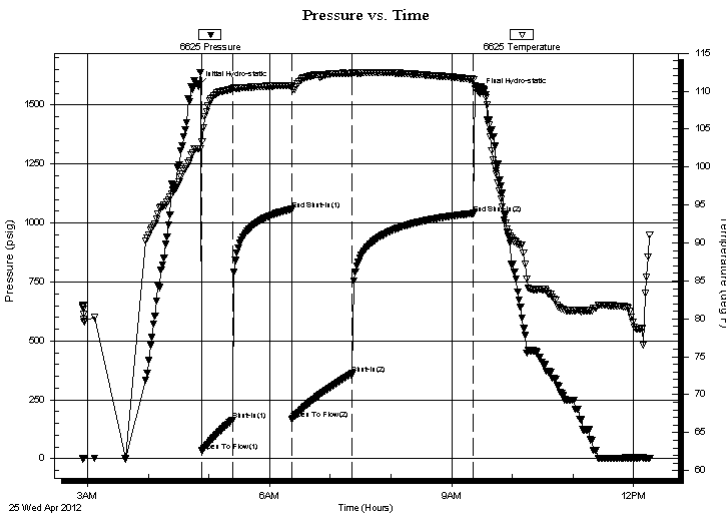
2012.04.25 @ 04:49:35

Time Off Btm:

2012.04.25 @ 09:26:34

**TEST COMMENT:** 30-IFP-w k to strg in 5min  
60-ISIP-surface bl bk  
60-FFP-w k to strg in 9min  
120-FSIP-no bl

## PRESSURE SUMMARY



Time (Min.)	Pressure (psig)	Temp (deg F)	Annotation
0	1580.87	102.41	Initial Hydro-static
4	34.04	103.37	Open To Flow (1)
34	164.69	110.26	Shut-In(1)
92	1058.05	110.73	End Shut-In(1)
93	168.39	110.48	Open To Flow (2)
152	360.88	112.38	Shut-In(2)
272	1040.88	111.56	End Shut-In(2)
277	1554.00	110.29	Final Hydro-static

## Recovery

Length (ft)	Description	Volume (bbl)
0.00	90'GIP	0.00
920.00	CO	12.91
40.00	MGO 25%G20%M55%O	0.56

## Gas Rates

	Choke (inches)	Pressure (psig)	Gas Rate (Mcf/d)

\* Recovery from multiple tests



# TRILOBITE TESTING, INC.

## DRILL STEM TEST REPORT

Caerus Kansas LLC

**31 17s 13w Barton**

P. O. Box 1378  
Hays KS 67601

**Mortimer 31-32**

Job Ticket: 47369

**DST#: 4**

ATTN: Brian Karlin

Test Start: 2012.04.25 @ 02:55:10

### GENERAL INFORMATION:

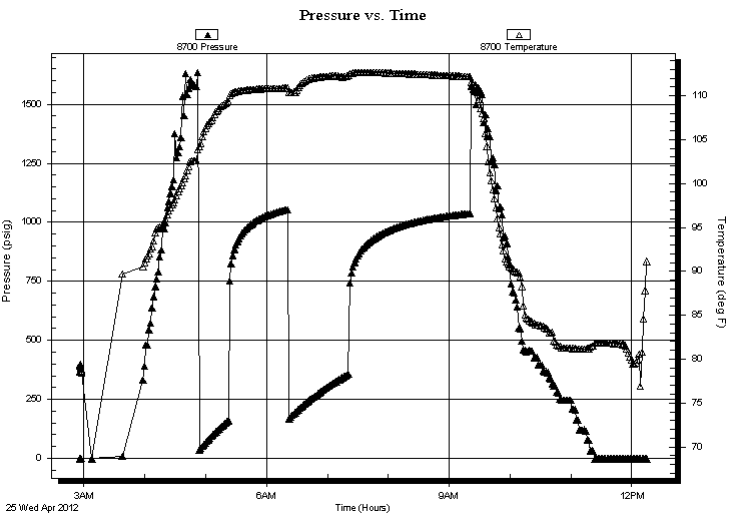
Formation: **Arbuckle**  
 Deviated: No Whipstock:                                      ft (KB)  
 Time Tool Opened: 04:53:05  
 Time Test Ended: 12:16:35  
**Interval: 3355.00 ft (KB) To 3369.00 ft (KB) (TVD)**  
 Total Depth: 3369.00 ft (KB) (TVD)  
 Hole Diameter: 7.85 inches Hole Condition: Fair

Test Type: Conventional Bottom Hole (Reset)  
 Tester: Ray Schwager  
 Unit No: 42  
 Reference Elevations: 1864.00 ft (KB)  
     1851.00 ft (CF)  
     KB to GR/CF: 13.00 ft

**Serial #: 8700      Outside**

Press @RunDepth:	psig @	3356.00 ft (KB)	Capacity:	8000.00 psig	
Start Date:	2012.04.25	End Date:	2012.04.25	Last Calib.:	2012.04.25
Start Time:	02:55:39	End Time:	12:15:04	Time On Btm:	
				Time Off Btm:	

**TEST COMMENT:** 30-IFP-w k to strg in 5min  
 60-ISIP-surface bl bk  
 60-FFP-w k to strg in 9min  
 120-FSIP-no bl



### PRESSURE SUMMARY

Time (Min.)	Pressure (psig)	Temp (deg F)	Annotation

### Recovery

Length (ft)	Description	Volume (bbl)
0.00	90'GIP	0.00
920.00	CO	12.91
40.00	MGO 25%G20%M55%O	0.56

\* Recovery from multiple tests

### Gas Rates

	Choke (inches)	Pressure (psig)	Gas Rate (Mcf/d)



**TRILOBITE  
TESTING, INC.**

## DRILL STEM TEST REPORT

**FLUID SUMMARY**

Caerus Kansas LLC

**31 17s 13w Barton**

P. O. Box 1378  
Hays KS 67601

**Mortimer 31-32**

Job Ticket: 47369

**DST#: 4**

ATTN: Brian Karlin

Test Start: 2012.04.25 @ 02:55:10

### Mud and Cushion Information

Mud Type: Gel Chem

Cushion Type:

Oil API:

40 deg API

Mud Weight: 9.00 lb/gal

Cushion Length:

ft

Water Salinity:

ppm

Viscosity: 50.00 sec/qt

Cushion Volume:

bbbl

Water Loss: 9.16 in<sup>3</sup>

Gas Cushion Type:

Resistivity: ohm.m

Gas Cushion Pressure:

psig

Salinity: 4000.00 ppm

Filter Cake: 1.00 inches

### Recovery Information

Recovery Table

Length ft	Description	Volume bbbl
0.00	90'GIP	0.000
920.00	CO	12.905
40.00	MGO 25%G20%M55%O	0.561

Total Length: 960.00 ft      Total Volume: 13.466 bbl

Num Fluid Samples: 0

Num Gas Bombs: 0

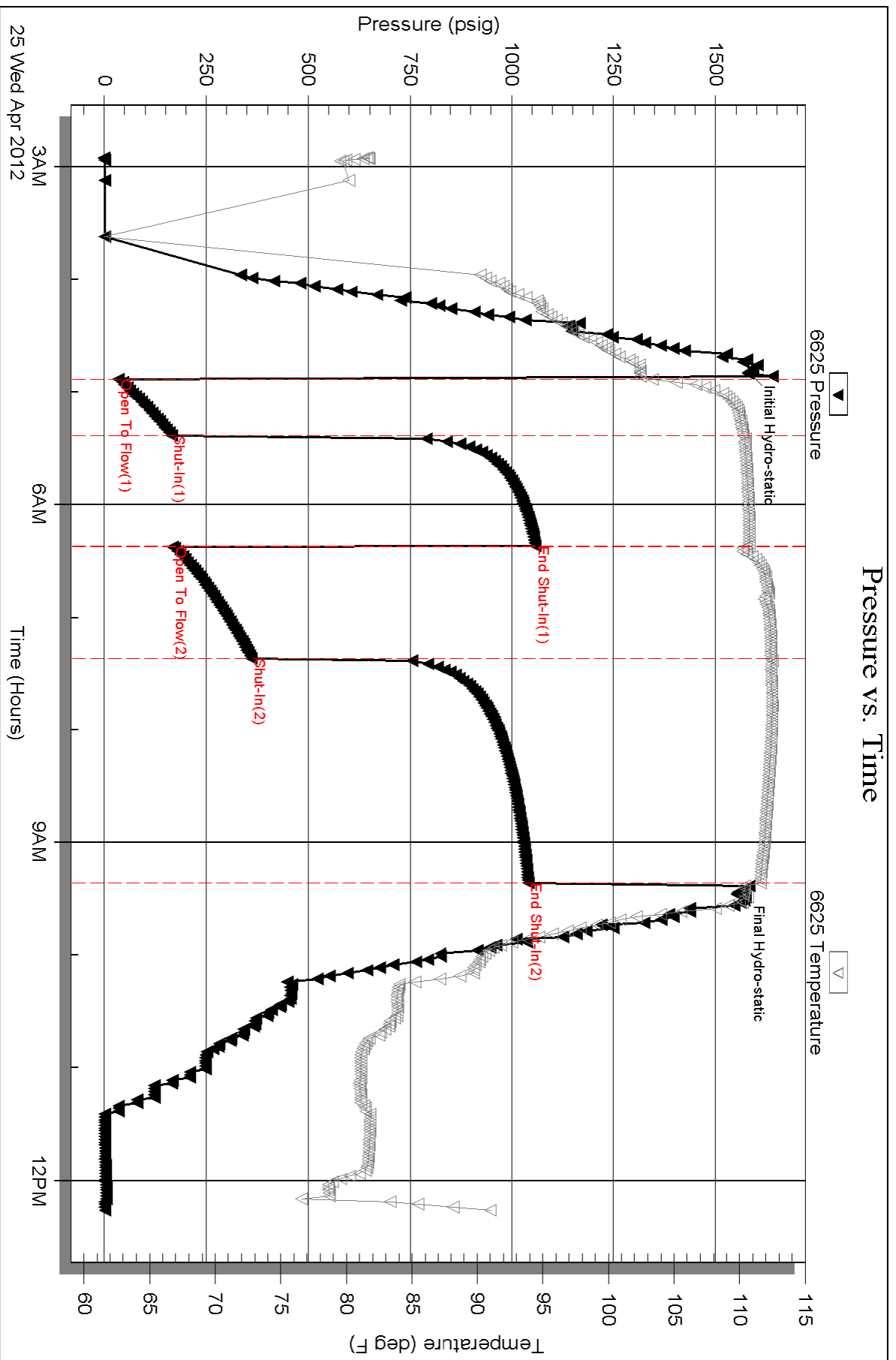
Serial #:

Laboratory Name:

Laboratory Location:

Recovery Comments:

### Pressure vs. Time



Serial #: 8700

Outside Caerus Kansas LLC

Mortimer 31-32

DST Test Number: 4

