



**TRILOBITE
TESTING, INC.**

DRILL STEM TEST REPORT

Berexco LLC
2020 N Bramblewood
Wichita, KS 67206
ATTN: Edw in Grieves

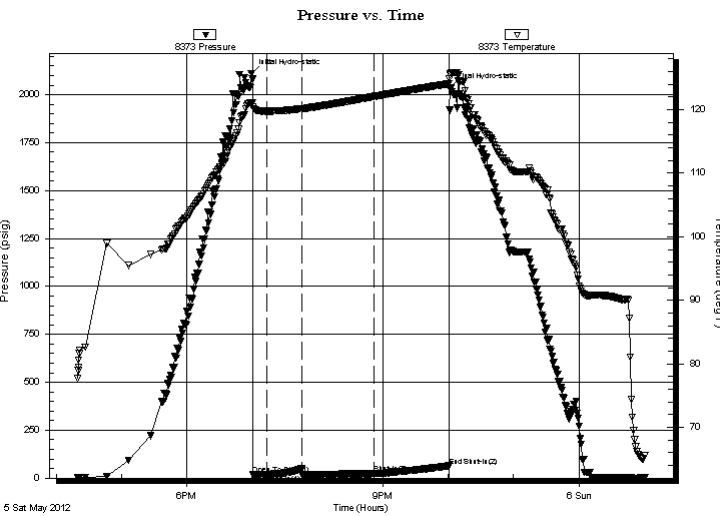
28-18s-31w Scott, KS
Huslig 2-28
Job Ticket: 46509 **DST#: 4**
Test Start: 2012.05.05 @ 16:19:54

GENERAL INFORMATION:

Formation: **Marmaton**
Deviated: No Whipstock: ft (KB)
Time Tool Opened: 19:00:34
Time Test Ended: 01:00:19
Interval: **4341.00 ft (KB) To 4380.00 ft (KB) (TVD)**
Total Depth: 4380.00 ft (KB) (TVD)
Hole Diameter: 7.88 inches Hole Condition: Good
Test Type: Conventional Bottom Hole (Reset)
Tester: Brandon Turley
Unit No: 60
Reference Elevations: 2956.00 ft (KB)
2946.00 ft (CF)
KB to GR/CF: 10.00 ft

Serial #: 8373 Inside
Press @ Run Depth: 23.71 psig @ 4346.00 ft (KB) Capacity: 8000.00 psig
Start Date: 2012.05.05 End Date: 2012.05.06 Last Calib.: 2012.05.06
Start Time: 16:19:54 End Time: 01:00:19 Time On Btm: 2012.05.05 @ 18:59:19
Time Off Btm: 2012.05.05 @ 22:02:03

TEST COMMENT: IF: Surface blow died in 7 min.
IS: No return.
FF: No blow.
FS: No return.



PRESSURE SUMMARY

Time (Min.)	Pressure (psig)	Temp (deg F)	Annotation
0	2111.30	120.99	Initial Hydro-static
2	20.04	120.40	Open To Flow (1)
15	19.18	119.76	Shut-In(1)
46	48.11	120.15	End Shut-In(1)
47	18.70	120.15	Open To Flow (2)
113	23.71	122.06	Shut-In(2)
182	64.17	124.09	End Shut-In(2)
183	2038.11	125.55	Final Hydro-static

Recovery

Length (ft)	Description	Volume (bbl)
5.00	mud oil spots 100%m	0.02

* Recovery from multiple tests

Gas Rates

Choke (inches)	Pressure (psig)	Gas Rate (Mcf/d)



**TRILOBITE
TESTING, INC.**

DRILL STEM TEST REPORT

FLUID SUMMARY

Berexco LLC

28-18s-31w Scott, KS

2020 N Bramblewood
Wichita, KS 67206

Huslig 2-28

Job Ticket: 46509

DST#: 4

ATTN: Edwin Grieves

Test Start: 2012.05.05 @ 16:19:54

Mud and Cushion Information

Mud Type: Gel Chem

Cushion Type:

Oil API:

0 deg API

Mud Weight: 9.00 lb/gal

Cushion Length:

ft

Water Salinity:

0 ppm

Viscosity: 50.00 sec/qt

Cushion Volume:

bbbl

Water Loss: 7.98 in³

Gas Cushion Type:

Resistivity: 0.00 ohm.m

Gas Cushion Pressure:

psig

Salinity: 1500.00 ppm

Filter Cake: 1.00 inches

Recovery Information

Recovery Table

Length ft	Description	Volume bbl
5.00	mud oil spots 100%m	0.025

Total Length: 5.00 ft Total Volume: 0.025 bbl

Num Fluid Samples: 0

Num Gas Bombs: 0

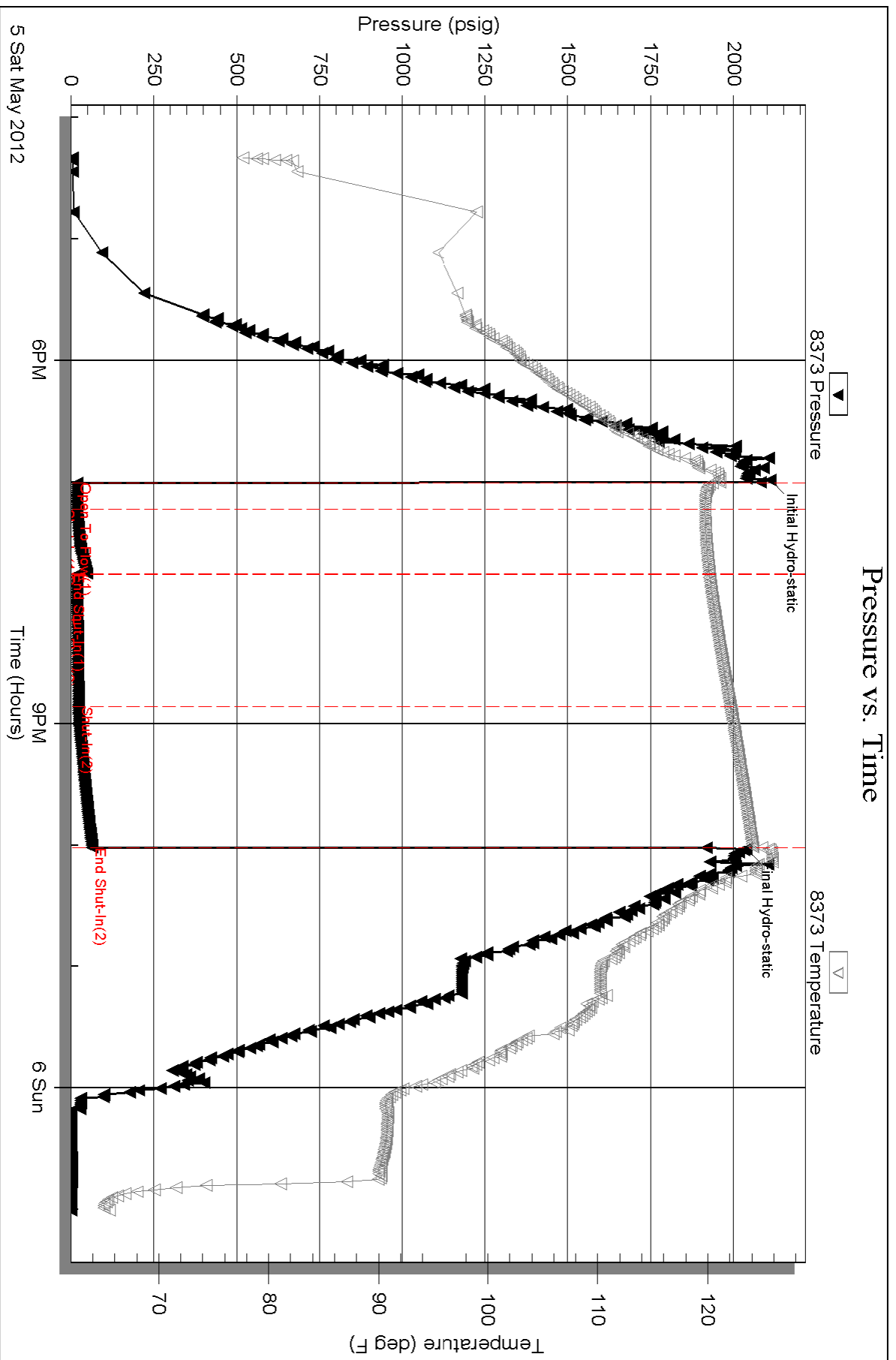
Serial #:

Laboratory Name:

Laboratory Location:

Recovery Comments:

Pressure vs. Time



Serial #: 8356

Outside Berexco LLC

Huslig 2-28

DST Test Number: 4

