



**TRILOBITE TESTING, INC.**

# DRILL STEM TEST REPORT

Berexco LLC  
 2020 N Bramblewood  
 Wichita, KS 67206  
 ATTN: Edwin Grieves

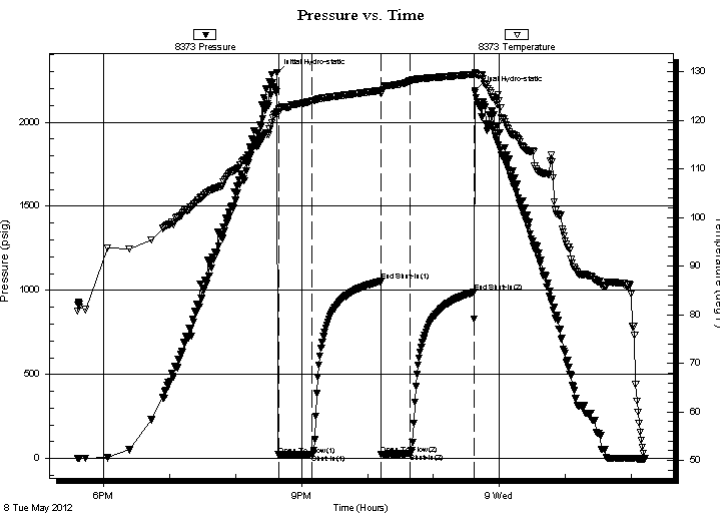
**28-18s-31w Scott, KS**  
**Huslig 2-28**  
 Job Ticket: 46511      **DST#: 6**  
 Test Start: 2012.05.08 @ 17:36:23

## GENERAL INFORMATION:

Formation: **Spergen**  
 Deviated: No Whipstock: ft (KB)  
 Time Tool Opened: 20:39:08  
 Time Test Ended: 02:12:23  
 Interval: **4588.00 ft (KB) To 4604.00 ft (KB) (TVD)**  
 Total Depth: 4604.00 ft (KB) (TVD)  
 Hole Diameter: 7.88 inches Hole Condition: Good  
 Test Type: Conventional Bottom Hole (Reset)  
 Tester: Brandon Turley  
 Unit No: 60  
 Reference Elevations: 2956.00 ft (KB)  
 2946.00 ft (CF)  
 KB to GR/CF: 10.00 ft

**Serial #: 8373      Inside**  
 Press @ Run Depth: 29.15 psig @ 4593.00 ft (KB)      Capacity: 8000.00 psig  
 Start Date: 2012.05.08      End Date: 2012.05.09      Last Calib.: 2012.05.09  
 Start Time: 17:36:28      End Time: 02:12:23      Time On Btm: 2012.05.08 @ 20:37:38  
 Time Off Btm: 2012.05.08 @ 23:37:38

**TEST COMMENT:** IF: Surface blow built to 1/4 died in 28 min.  
 IS: No return.  
 FF: No blow.  
 FS: No return.



## PRESSURE SUMMARY

Time (Min.)	Pressure (psig)	Temp (deg F)	Annotation
0	2291.58	121.63	Initial Hydro-static
2	21.77	122.10	Open To Flow (1)
32	24.15	123.97	Shut-In(1)
95	1053.91	126.18	End Shut-In(1)
95	26.68	125.45	Open To Flow (2)
122	29.15	128.20	Shut-In(2)
179	989.65	129.48	End Shut-In(2)
180	2186.30	129.88	Final Hydro-static

## Recovery

Length (ft)	Description	Volume (bbl)
5.00	mud some oil spots 100% m	0.02

\* Recovery from multiple tests

## Gas Rates

Choke (inches)	Pressure (psig)	Gas Rate (Mcf/d)



**TRILOBITE  
TESTING, INC.**

**DRILL STEM TEST REPORT**

**FLUID SUMMARY**

Berexco LLC

**28-18s-31w Scott, KS**

2020 N Bramblewood  
Wichita, KS 67206

**Huslig 2-28**

Job Ticket: 46511

**DST#: 6**

ATTN: Edwin Grieves

Test Start: 2012.05.08 @ 17:36:23

**Mud and Cushion Information**

Mud Type: Gel Chem

Cushion Type:

Oil API:

0 deg API

Mud Weight: 9.00 lb/gal

Cushion Length:

ft

Water Salinity:

0 ppm

Viscosity: 63.00 sec/qt

Cushion Volume:

bbbl

Water Loss: 7.99 in<sup>3</sup>

Gas Cushion Type:

Resistivity: 0.00 ohm.m

Gas Cushion Pressure:

psig

Salinity: 1500.00 ppm

Filter Cake: 1.00 inches

**Recovery Information**

Recovery Table

Length ft	Description	Volume bbl
5.00	mud some oil spots 100% m	0.025

Total Length: 5.00 ft      Total Volume: 0.025 bbl

Num Fluid Samples: 0

Num Gas Bombs: 0

Serial #:

Laboratory Name:

Laboratory Location:

Recovery Comments:

### Pressure vs. Time

