



DRILL STEM TEST REPORT

Prepared For: **Shelby Resources**

2717 Canal Blvd. Hays Kansas 67601

ATTN: Keith Reavis

S-H unit #1-20

20-17s-13w-Barton

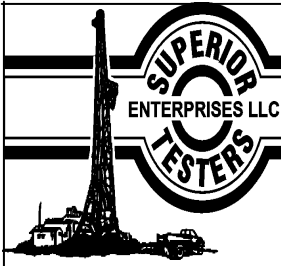
Start Date: 2011.11.18 @ 01:34:00

End Date: 2011.11.18 @ 10:11:30

Job Ticket #: 17236 DST #: 3

Superior Testers Enterprises LLC
PO Box 138 Great Bend KS 67530
1-800-792-6902

Printed: 2011.11.18 @ 22:55:35



DRILL STEM TEST REPORT

Shelby Resources
 2717 Canal Blvd. Hays Kansas 67601
 ATTN: Keith Reavis

20-17s-13w-Barton
S-H unit #1-20
 Job Ticket: 17236 **DST#: 3**
 Test Start: 2011.11.18 @ 01:34:00

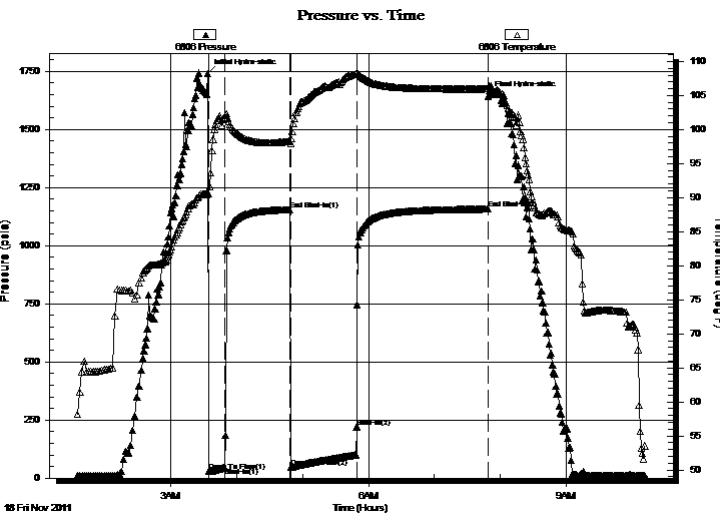
GENERAL INFORMATION:

Formation: **Arbuckle**
 Deviated: No Whipstock: ft (KB)
 Test Type: Conventional Bottom Hole (Initial)
 Time Tool Opened: 03:34:30 Tester: Dustin Ellis
 Time Test Ended: 10:11:30 Unit No: 3315-GB-30
 Interval: **3445.00 ft (KB) To 3453.00 ft (KB) (TVD)** Reference Elevations: 1940.00 ft (KB)
 Total Depth: 3453.00 ft (KB) (TVD) 1929.00 ft (CF)
 Hole Diameter: 7.88 inches Hole Condition: Fair KB to GR/CF: 11.00 ft

Serial #: 6806

Press @ RunDepth: 220.56 psia @ ft (KB) Capacity: 5000.00 psia
 Start Date: 2011.11.18 End Date: 2011.11.18 Last Calib.: 2011.11.18
 Start Time: 01:34:00 End Time: 10:11:30 Time On Btm: 2011.11.18 @ 03:33:30
 Time Off Btm: 2011.11.18 @ 07:49:00

TEST COMMENT: 1st Open 15 minutes Fair building blow built to 1.5 inches in a bucket
 1st shut in 60 minutes No blow back
 2nd Open 60 minutes Fair building blow built to 2.5 inches in a bucket
 2nd shut in 120 minutes No blow back



PRESSURE SUMMARY

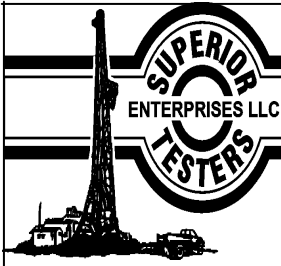
Time (Min.)	Pressure (psia)	Temp (deg F)	Annotation
0	1741.67	90.53	Initial Hydro-static
1	28.11	90.55	Open To Flow (1)
16	47.45	101.82	Shut-In(1)
75	1155.49	98.30	End Shut-In(1)
76	47.19	97.97	Open To Flow (2)
136	220.56	108.31	Shut-In(2)
255	1157.25	105.98	End Shut-In(2)
256	1643.92	106.11	Final Hydro-static

Recovery

Length (ft)	Description	Volume (bbl)
125.00	Very Slight oil cut w ater 90%w ater 5%oi	0.61
0.00	Chlorides 17,000	0.00

Gas Rates

Choke (inches)	Pressure (psia)	Gas Rate (Mcf/d)



DRILL STEM TEST REPORT

Shelby Resources
 2717 Canal Blvd. Hays Kansas 67601
 ATTN: Keith Reavis

20-17s-13w-Barton
S-H unit #1-20
 Job Ticket: 17236 **DST#: 3**
 Test Start: 2011.11.18 @ 01:34:00

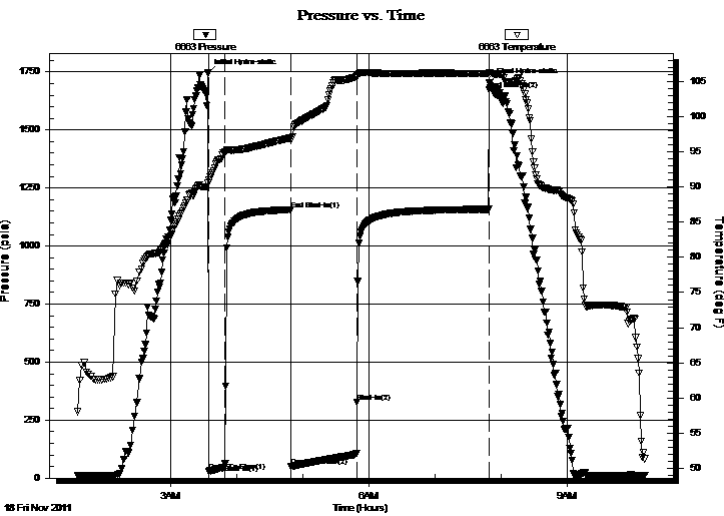
GENERAL INFORMATION:

Formation: **Arbuckle**
 Deviated: No Whipstock: ft (KB)
 Time Tool Opened: 03:34:30
 Time Test Ended: 10:11:30
 Interval: **3445.00 ft (KB) To 3453.00 ft (KB) (TVD)**
 Total Depth: 3453.00 ft (KB) (TVD)
 Hole Diameter: 7.88 inches Hole Condition: Fair
 Test Type: Conventional Bottom Hole (Initial)
 Tester: Dustin Ellis
 Unit No: 3315-GB-30
 Reference Elevations: 1940.00 ft (KB)
 1929.00 ft (CF)
 KB to GR/CF: 11.00 ft

Serial #: 6663

Press @ RunDepth: 1673.28 psia @ ft (KB) Capacity: 5000.00 psia
 Start Date: 2011.11.18 End Date: 2011.11.18 Last Calib.: 2011.11.18
 Start Time: 01:34:00 End Time: 10:11:00 Time On Btm: 2011.11.18 @ 03:33:30
 Time Off Btm: 2011.11.18 @ 07:49:30

TEST COMMENT: 1st Open 15 minutes Fair building blow built to 1.5 inches in a bucket
 1st shut in 60 minutes No blow back
 2nd Open 60 minutes Fair building blow built to 2.5 inches in a bucket
 2nd shut in 120 minutes No blow back



PRESSURE SUMMARY

Time (Min.)	Pressure (psia)	Temp (deg F)	Annotation
0	1744.84	90.59	Initial Hydro-static
1	29.83	90.95	Open To Flow (1)
16	61.50	94.91	Shut-In(1)
75	1156.66	96.99	End Shut-In(1)
76	49.50	96.68	Open To Flow (2)
136	328.28	105.80	Shut-In(2)
256	1673.28	106.31	End Shut-In(2)
256	1702.80	106.27	Final Hydro-static

Recovery

Length (ft)	Description	Volume (bbl)
125.00	Very Slight oil cut w ater 90%w ater 5%oi	0.61
0.00	Chlorides 17,000	0.00

Gas Rates

Choke (inches)	Pressure (psia)	Gas Rate (Mcf/d)



DRILL STEM TEST REPORT

TOOL DIAGRAM

Shelby Resources
 2717 Canal Blvd. Hays Kansas 67601
 ATTN: Keith Reavis

20-17s-13w-Barton
S-H unit #1-20
 Job Ticket: 17236 **DST#: 3**
 Test Start: 2011.11.18 @ 01:34:00

Tool Information

Drill Pipe:	Length: 3179.00 ft	Diameter: 3.80 inches	Volume: 44.59 bbl	Tool Weight: 2000.00 lb
Heavy Wt. Pipe:	Length: 0.00 ft	Diameter: 0.00 inches	Volume: 0.00 bbl	Weight set on Packer: 20000.00 lb
Drill Collar:	Length: 258.00 ft	Diameter: 2.25 inches	Volume: 1.27 bbl	Weight to Pull Loose: 51000.00 lb
			<u>Total Volume: 45.86 bbl</u>	Tool Chased 0.00 ft
Drill Pipe Above KB:	20.00 ft			String Weight: Initial 51000.00 lb
Depth to Top Packer:	3445.00 ft			Final 51000.00 lb
Depth to Bottom Packer:	ft			
Interval between Packers:	8.00 ft			
Tool Length:	36.00 ft			
Number of Packers:	2	Diameter: 6.75 inches		

Tool Comments:

Tool Description	Length (ft)	Serial No.	Position	Depth (ft)	Accum. Lengths
Shut-In Tool	5.00			3422.00	
Hydraulic Tool	5.00			3427.00	
Jars	6.00			3433.00	
Safety Joint	2.00			3435.00	
Packer	5.00			3440.00	28.00 Bottom Of Top Packer
Packer	5.00			3445.00	
Perforations	3.00			3448.00	
Recorder	1.00	6806	Inside	3449.00	
Recorder	1.00	6663	Outside	3450.00	
Bull Plug	3.00			3453.00	8.00 Bottom Packers & Anchor
Total Tool Length:	36.00				



DRILL STEM TEST REPORT

FLUID SUMMARY

Shelby Resources
 2717 Canal Blvd. Hays Kansas 67601
 ATTN: Keith Reavis

20-17s-13w-Barton
S-H unit #1-20
 Job Ticket: 17236 **DST#: 3**
 Test Start: 2011.11.18 @ 01:34:00

Mud and Cushion Information

Mud Type: Gel Chem	Cushion Type:	Oil API:	deg API
Mud Weight: 9.00 lb/gal	Cushion Length: ft	Water Salinity:	ppm
Viscosity: 48.00 sec/qt	Cushion Volume: bbl		
Water Loss: 7.20 in ³	Gas Cushion Type:		
Resistivity: 0.40 ohm.m	Gas Cushion Pressure: psia		
Salinity: 7200.00 ppm			
Filter Cake: 1.00 inches			

Recovery Information

Recovery Table

Length ft	Description	Volume bbl
125.00	Very Slight oil cut w ater 90%w ater 5%oil	0.615
0.00	Chlorides 17,000	0.000

Total Length: 125.00 ft Total Volume: 0.615 bbl
 Num Fluid Samples: 0 Num Gas Bombs: 0 Serial #:
 Laboratory Name: Laboratory Location:
 Recovery Comments:

