



**TRILOBITE  
TESTING, INC.**

# DRILL STEM TEST REPORT

M & M Exploration  
4257 Main ST.#230  
Westminster CO 80031  
ATTN: Chase Thomas

**16/34s/14w Barber KS**  
**Z Bar 16-4 SWD**  
Job Ticket: 47489      **DST#: 1**  
Test Start: 2012.04.30 @ 16:23:35

## GENERAL INFORMATION:

Formation: **Toronto**  
Deviated: No Whipstock:                      ft (KB)  
Time Tool Opened: 18:59:35  
Time Test Ended: 02:39:20  
Interval: **3848.00 ft (KB) To 3849.00 ft (KB) (TVD)**  
Total Depth: 3889.00 ft (KB) (TVD)  
Hole Diameter: 7.88 inches Hole Condition: Fair  
Reference Elevations: 1571.00 ft (KB)  
1559.00 ft (CF)  
KB to GR/CF: 12.00 ft  
Test Type: Conventional Bottom Hole (Initial)  
Tester: Kevin Taylor  
Unit No: 45

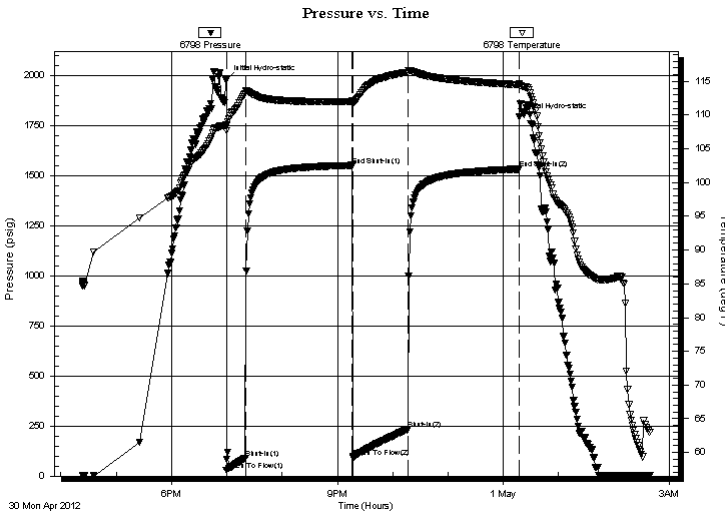
## Serial #: 6798

Inside

Press @ Run Depth: 233.47 psig @ 3849.00 ft (KB)      Capacity: 8000.00 psig  
Start Date: 2012.04.30      End Date: 2012.05.01      Last Calib.: 2012.05.01  
Start Time: 16:23:36      End Time: 02:39:20      Time On Btm: 2012.04.30 @ 18:59:20  
Time Off Btm: 2012.05.01 @ 00:17:20

TEST COMMENT: I.F. Strong Blow B.O.B. 18 Min  
I.S.I. No Blow  
F.F. Strong Blow B.O.B. 30 Min  
F.S.I. No Blow

## PRESSURE SUMMARY



Time (Min.)	Pressure (psig)	Temp (deg F)	Annotation
0	1976.98	108.61	Initial Hydro-static
1	28.95	107.69	Open To Flow (1)
21	89.58	113.20	Shut-In(1)
137	1550.01	112.06	End Shut-In(1)
138	94.52	111.57	Open To Flow (2)
197	233.47	116.36	Shut-In(2)
318	1531.60	114.51	End Shut-In(2)
318	1790.16	114.61	Final Hydro-static

## Recovery

Length (ft)	Description	Volume (bbl)
78.00	Wtr Cut Mud 5%W 95%M	1.14
420.00	Cln Wtr 99%W 1%M	6.14
62.00	Wtr Cut Mud 8%W 92%M	0.91

## Gas Rates

	Choke (inches)	Pressure (psig)	Gas Rate (Mcf/d)



**TRILOBITE  
TESTING, INC.**

# DRILL STEM TEST REPORT

**FLUID SUMMARY**

M & M Exploration

**16/34s/14w Barber KS**

4257 Main ST.#230  
Westminster CO 80031

**Z Bar 16-4 SWD**

Job Ticket: 47489

**DST#: 1**

ATTN: Chase Thomas

Test Start: 2012.04.30 @ 16:23:35

## Mud and Cushion Information

Mud Type: Gel Chem

Cushion Type:

Oil API:

deg API

Mud Weight: 9.00 lb/gal

Cushion Length:

ft

Water Salinity:

90000 ppm

Viscosity: 52.00 sec/qt

Cushion Volume:

bbbl

Water Loss: 8.78 in<sup>3</sup>

Gas Cushion Type:

Resistivity: ohm.m

Gas Cushion Pressure:

psig

Salinity: 4000.00 ppm

Filter Cake: 0.02 inches

## Recovery Information

Recovery Table

Length ft	Description	Volume bbbl
78.00	Wtr Cut Mud 5%W 95%M	1.141
420.00	Chn Wtr 99%W 1%M	6.142
62.00	Wtr Cut Mud 8%W 92%M	0.907

Total Length: 560.00 ft

Total Volume: 8.190 bbl

Num Fluid Samples: 0

Num Gas Bombs: 0

Serial #:

Laboratory Name:

Laboratory Location:

Recovery Comments:

Serial #: 6798

Inside

M & M Exploration

Z Bar 16-4 SWD

DST Test Number: 1

