



**TRILOBITE
TESTING, INC.**

DRILL STEM TEST REPORT

M & M Exploration
4257 Main ST.#230
Westminster CO 80031
ATTN: Chase Thomas

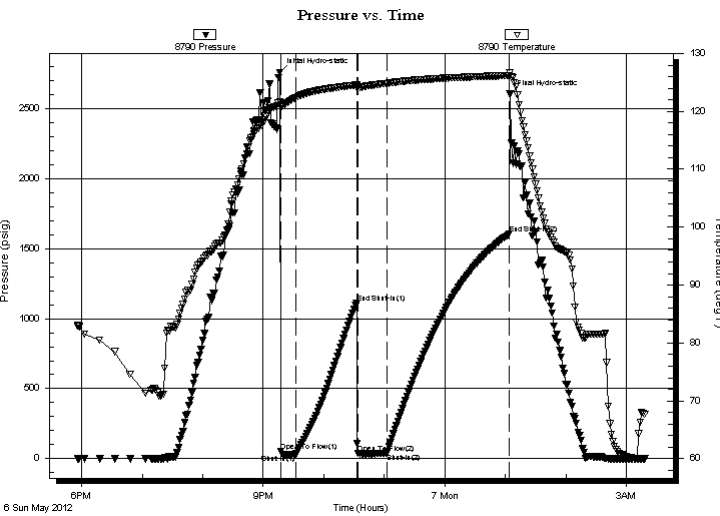
16-34s-14w Barber KS
Z Bar #16-4 SWD
Job Ticket: 46953 **DST#: 2**
Test Start: 2012.05.06 @ 17:56:00

GENERAL INFORMATION:

Formation: **Viola**
Deviated: No Whipstock: ft (KB)
Time Tool Opened: 21:17:30
Time Test Ended: 03:18:00
Interval: 4978.00 ft (KB) To 5102.00 ft (KB) (TVD)
Total Depth: 5330.00 ft (KB) (TVD)
Hole Diameter: 7.88 inches Hole Condition: Good
Test Type: Conventional Straddle (Reset)
Tester: Leal Cason
Unit No: Rickets 04
Reference Elevations: 1571.00 ft (KB)
1559.00 ft (CF)
KB to GR/CF: 12.00 ft

Serial #: 8790 Inside
Press @ RunDepth: 38.73 psig @ 4990.00 ft (KB) Capacity: 8000.00 psig
Start Date: 2012.05.06 End Date: 2012.05.07 Last Calib.: 2012.05.07
Start Time: 17:56:05 End Time: 03:18:00 Time On Btm: 2012.05.06 @ 21:16:30
Time Off Btm: 2012.05.07 @ 01:04:30

TEST COMMENT: IF: Strong Blow , BOB in 3 1/2 minutes
IS: No Blow Back
FF: Strong Blow , BOB in 10 seconds
FS: No Blow Back



PRESSURE SUMMARY

Time (Min.)	Pressure (psig)	Temp (deg F)	Annotation
0	2760.16	121.60	Initial Hydro-static
1	51.56	120.75	Open To Flow (1)
16	32.02	122.38	Shut-In(1)
76	1111.73	124.54	End Shut-In(1)
78	37.00	124.19	Open To Flow (2)
106	38.73	124.84	Shut-In(2)
227	1604.09	126.20	End Shut-In(2)
228	2604.02	126.73	Final Hydro-static

Recovery

Length (ft)	Description	Volume (bbl)
0.00	GIP 1000 feet	0.00
50.00	Mud	0.73

* Recovery from multiple tests

Gas Rates

Choke (inches)	Pressure (psig)	Gas Rate (Mcf/d)



**TRILOBITE
TESTING, INC.**

DRILL STEM TEST REPORT

FLUID SUMMARY

M & M Exploration

16-34s-14w Barber KS

4257 Main ST.#230
Westminster CO 80031

Z Bar #16-4 SWD

Job Ticket: 46953

DST#: 2

ATTN: Chase Thomas

Test Start: 2012.05.06 @ 17:56:00

Mud and Cushion Information

Mud Type: Gel Chem

Cushion Type:

Oil API:

deg API

Mud Weight: 9.00 lb/gal

Cushion Length:

ft

Water Salinity:

ppm

Viscosity: 64.00 sec/qt

Cushion Volume:

bbbl

Water Loss: 9.18 in³

Gas Cushion Type:

Resistivity: ohm.m

Gas Cushion Pressure:

psig

Salinity: 5100.00 ppm

Filter Cake: 0.02 inches

Recovery Information

Recovery Table

Length ft	Description	Volume bbl
0.00	GIP 1000 feet	0.000
50.00	Mud	0.731

Total Length: 50.00 ft Total Volume: 0.731 bbl

Num Fluid Samples: 0

Num Gas Bombs: 0

Serial #:

Laboratory Name:

Laboratory Location:

Recovery Comments:

Serial #: 8790

Inside

M & M Exploration

Z Bar #16-4 SWD

DST Test Number: 2

