

DRILL STEM TEST REPORT

Carrie Exploration & Development
 210 W 22nd Street Hays KS 67601
 ATTN: Herb Deines

25-19-11w Barton
H. Roth #c-1
 Job Ticket: 18730 **DST#: 1**
 Test Start: 2012.01.22 @ 12:35:00

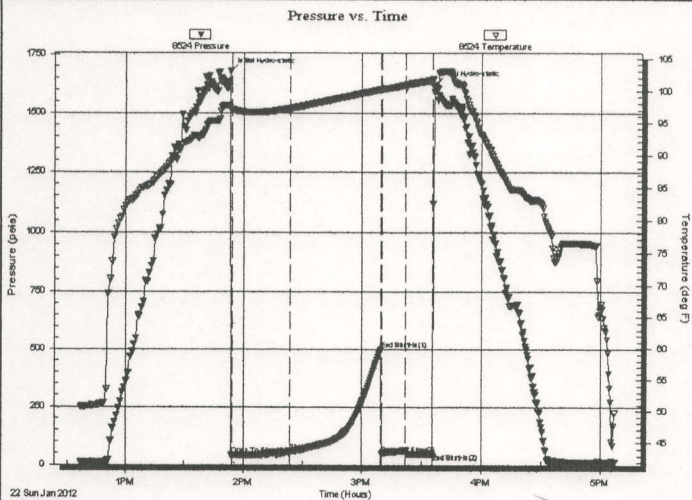
GENERAL INFORMATION:

Formation: **Arbuckle**
 Deviated: No Whipstock: ft (KB)
 Time Tool Opened: 13:54:30
 Time Test Ended: 17:07:30
 Interval: **3277.00 ft (KB) To 3311.00 ft (KB) (TVD)**
 Total Depth: 3311.00 ft (KB) (TVD)
 Hole Diameter: 7.88 inches Hole Condition: Fair
 Test Type: Conventional Bottom Hole (Initial)
 Tester: Jared Scheck
 Unit No: 3320-GB-
 Reference Elevations: 1779.00 ft (KB)
 1771.00 ft (CF)
 KB to GR/CF: 8.00 ft

Serial #: 8524

Press@RunDepth: 59.85 psia @ ft (KB) Capacity: 5000.00 psia
 Start Date: 2012.01.22 End Date: 2012.01.22 Last Calib.: 2012.01.22
 Start Time: 12:35:00 End Time: 17:07:30 Time On Btm: 2012.01.22 @ 13:53:30
 Time Off Btm: 2012.01.22 @ 15:36:30

TEST COMMENT: 1st Opening 30 Minutes-Weak surface blow built 3/4 inch into water stayed steady throughout open
 1st Shut-in 45 Minutes-No blow back
 2nd Opening 20 Minutes-Weak surge did not build flushed tool good surge did not build
 2nd Shut-in 10 Minutes- No blow back



PRESSURE SUMMARY

Time (Min.)	Pressure (psia)	Temp (deg F)	Annotation
0	1676.30	97.40	Initial Hydro-static
1	39.72	97.01	Open To Flow (1)
30	55.95	97.23	Shut-In(1)
76	501.45	100.22	End Shut-In(1)
77	45.30	100.21	Open To Flow (2)
88	59.85	100.89	Shut-In(2)
102	47.47	101.66	End Shut-In(2)
103	1618.83	100.00	Final Hydro-static

Recovery

Length (ft)	Description	Volume (bbl)
5.00	Mud spot oil 99% mud 1% oil	0.07

Gas Rates

Choke (inches)	Pressure (psia)	Gas Rate (Mcf/d)