

DRILL STEM TEST REPORT

Carrie Exploration & Development
 210 W 22nd Street Hays KS 67601
 ATTN: Herb Deines

25-19-11w Barton
H. Roth #c-1
 Job Ticket: 18731 **DST#: 2**
 Test Start: 2012.01.23 @ 11:30:00

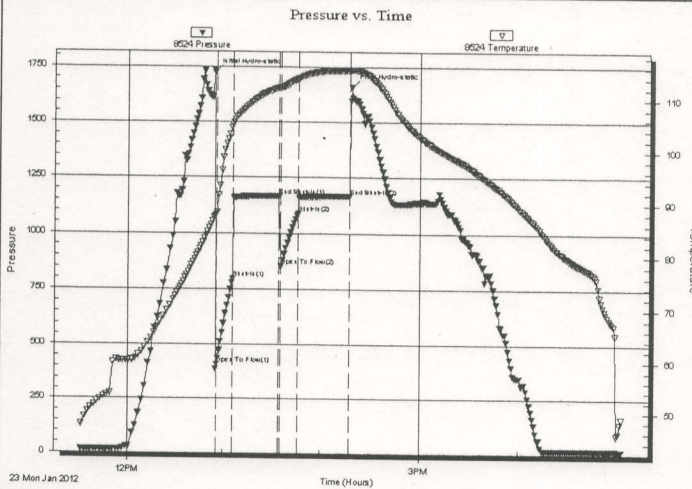
GENERAL INFORMATION:

Formation: **Arbuckle**
 Deviated: No Whipstock: ft (KB)
 Time Tool Opened: 12:56:00
 Time Test Ended: 17:03:30
 Test Type: Conventional Straddle (Initial)
 Tester: Jared Scheck
 Unit No: 3320-GB- 40
 Interval: **3310.00 ft (KB) To 3335.00 ft (KB) (TVD)**
 Total Depth: 3438.00 ft (KB) (TVD)
 Hole Diameter: 7.88 inches Hole Condition: Fair
 Reference Elevations: 1779.00 ft (KB)
 1771.00 ft (CF)
 KB to GR/CF: 8.00 ft

Serial #: 8524

Press@RunDepth: 1086.80 psia @ 3438.00 ft (KB) Capacity: 5000.00 psia
 Start Date: 2012.01.23 End Date: 2012.01.23 Last Calib.: 2012.01.24
 Start Time: 11:30:00 End Time: 17:03:30 Time On Btm: 2012.01.23 @ 12:55:00
 Time Off Btm: 2012.01.23 @ 14:19:00

TEST COMMENT: 1st Opening 10 Minutes-Strong blow built bottom of bucket less then 1 minute
 1st Shut-in 30 Minutes-Very weak surface blow died off
 2nd Opening 10 Minutes-Strong blow built bottom of bucket in less then 1 minute
 2nd Shut-in 30 Minutes-No blow back



PRESSURE SUMMARY

Time (Min.)	Pressure (psia)	Temp (deg F)	Annotation
0	1721.14	87.67	Initial Hydro-static
10	1	410.37	Open To Flow (1)
30	11	795.56	Shut-In(1)
	40	1166.19	End Shut-In(1)
10	41	850.41	Open To Flow (2)
	51	1086.80	Shut-In(2)
30	83	1164.71	End Shut-In(2)
	84	1658.10	Final Hydro-static

Recovery

Length (ft)	Description	Volume (bbl)
2280.00	Water	31.98
0.00	Chlorides 23,000	0.00
0.00	Resistivity 20 @45 Degrees	0.00

Gas Rates

	Choke (inches)	Pressure (psia)	Gas Rate (Mcf/d)