

DRILL STEM TEST REPORT

Carrie Exploration & Development

John Roth #C-2

210 West 2nd Street
Hays, Kansas 67601

34-19s-11w

Job Ticket: 17212

DST#: 1

ATTN: Herb Deines

Test Start: 2011.09.13 @ 08:15:00

GENERAL INFORMATION:

Formation: **Kansas City "A & B"**

Deviated: No Whipstock: ft (KB)

Time Tool Opened: 09:49:30

Time Test Ended: 14:10:30

Test Type: Conventional Bottom Hole (Initial)

Tester: Gene Budig

Unit No: 3335-29

Interval: **3046.00 ft (KB) To 3085.00 ft (KB) (TVD)**

Reference Elevations: 1780.00 ft (KB)

Total Depth: 3085.00 ft (KB) (TVD)

1772.00 ft (CF)

Hole Diameter: 7.88 inches Hole Condition: Fair

KB to GR/CF: 8.00 ft

Serial #: 6806

Inside

Press@RunDepth: 53.88 psia @ 3081.00 ft (KB)

Capacity: 5000.00 psia

Start Date: 2011.09.13

End Date: 2011.09.13

Last Calib.: 2011.09.13

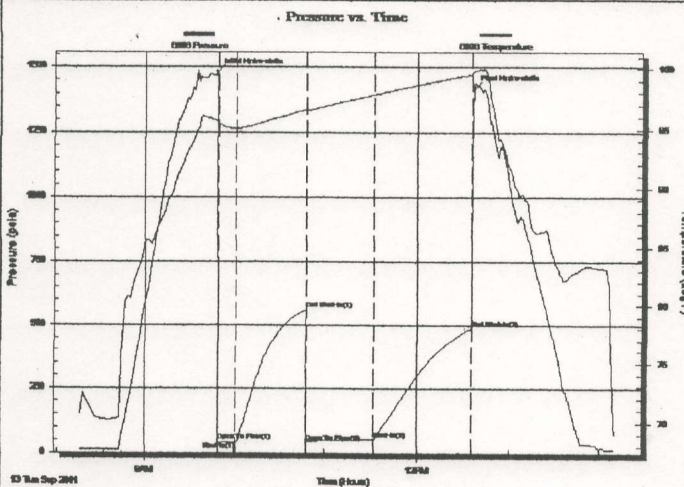
Start Time: 08:15:00

End Time: 14:10:30

Time On Btrn: 2011.09.13 @ 09:48:30

Time Off Btrn: 2011.09.13 @ 12:37:00

TEST COMMENT: 1st Opening 15 Minutes-Fair blow build to the bottom of a 5 gallon bucket in 10 minutes
 1st Shut-In 45 Minutes-No blow back
 2nd Opening 45 Minutes-Good blow built to the bottom of a 5 gallon bucket in 1 minute and decreased to a fair blow
 2ns Shut-In 60 Minutes-No blow back



PRESSURE SUMMARY

Time (Min.)	Pressure (psia)	Temp (deg F)	Annotation
0	1481.03	95.65	Initial Hydro-static
1	47.56	95.37	Open To Flow (1)
13	43.49	95.03	Shut-In(1)
59	561.55	96.64	End Shut-In(1)
60	43.87	96.54	Open To Flow (2)
104	53.88	97.86	Shut-In(2)
168	487.87	99.50	End Shut-In(2)
169	1416.00	99.80	Final Hydro-static

Recovery

Length (ft)	Description	Volume (bbl)
0.00	400 feet of gas in the pipe	0.00
40.00	slightly oil cut mud	0.56
0.00	11%Gas 1% Oil 78% Mud 10% Water	0.00
0.00	Chlorides 10000	0.00

Gas Rates

	Choke (inches)	Pressure (psia)	Gas Rate (Mcf/d)