



TRILOBITE TESTING, INC.

DRILL STEM TEST REPORT

Berexco LLC.

17-9s-21w Graham

2020 N. Bramblewood
Wichita, Ks. 67206+1094

Cooley # B-21

Job Ticket: 47256

DST#: 5

ATTN: Bryan Bynog

Test Start: 2012.04.10 @ 00:14:05

GENERAL INFORMATION:

Formation: **Arbuckle**

Deviated: No Whipstock: ft (KB)

Time Tool Opened: 02:16:00

Time Test Ended: 08:01:59

Test Type: Conventional Bottom Hole (Reset)

Tester: Andy Carreira

Unit No: 39

Interval: 3739.00 ft (KB) To 3781.00 ft (KB) (TVD)

Reference Elevations: 2277.00 ft (KB)

Total Depth: 3781.00 ft (KB) (TVD)

2266.00 ft (CF)

Hole Diameter: 7.88 inches Hole Condition: Fair

KB to GR/CF: 11.00 ft

Serial #: 8647 Outside

Press @ Run Depth: 153.96 psig @ 3744.00 ft (KB)

Capacity: 8000.00 psig

Start Date: 2012.04.10

End Date:

2012.04.10

Last Calib.:

2012.04.10

Start Time: 00:14:05

End Time:

08:01:59

Time On Btm:

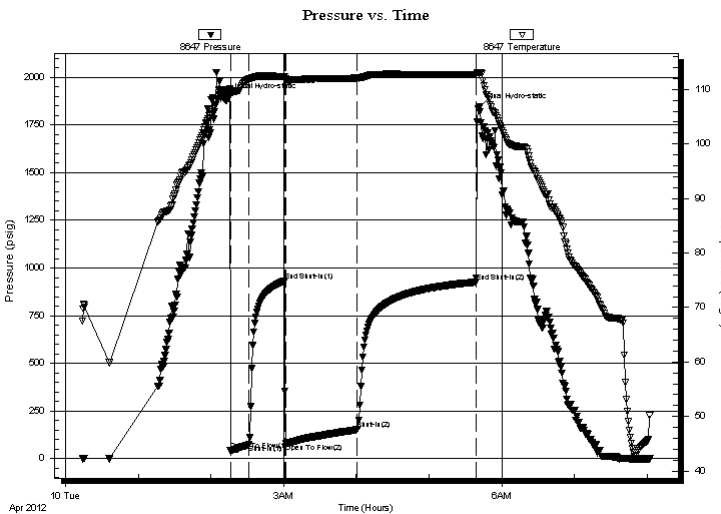
2012.04.10 @ 02:13:50

Time Off Btm:

2012.04.10 @ 05:41:20

TEST COMMENT: IF:(15min) 2" blow
IS:(30min) No Return
FF:(60min) 1" blow
FS:(90min) No Return

PRESSURE SUMMARY



Time (Min.)	Pressure (psig)	Temp (deg F)	Annotation
0	1895.03	109.88	Initial Hydro-static
3	42.35	109.32	Open To Flow (1)
18	73.71	111.88	Shut-In(1)
48	932.40	112.31	End Shut-In(1)
48	80.96	111.99	Open To Flow (2)
107	153.96	112.06	Shut-In(2)
205	926.22	112.75	End Shut-In(2)
208	1839.23	113.00	Final Hydro-static

Recovery

Length (ft)	Description	Volume (bbl)
180.00	OCGM g=10% o=30% m=60%	0.89
140.00	CO o=100%	0.69

Gas Rates

Choke (inches)	Pressure (psig)	Gas Rate (Mcf/d)

* Recovery from multiple tests



**TRILOBITE
TESTING, INC.**

DRILL STEM TEST REPORT

FLUID SUMMARY

Berexco LLC.

17-9s-21w Graham

2020 N. Bramblewood
Wichita, Ks. 67206+1094

Cooley # B-21

Job Ticket: 47256

DST#: 5

ATTN: Bryan Bynog

Test Start: 2012.04.10 @ 00:14:05

Mud and Cushion Information

Mud Type: Gel Chem

Cushion Type:

Oil API:

deg API

Mud Weight: 9.00 lb/gal

Cushion Length:

ft

Water Salinity:

ppm

Viscosity: 61.00 sec/qt

Cushion Volume:

bbbl

Water Loss: 7.98 in³

Gas Cushion Type:

Resistivity: ohm.m

Gas Cushion Pressure:

psig

Salinity: 2000.00 ppm

Filter Cake: inches

Recovery Information

Recovery Table

Length ft	Description	Volume bbbl
180.00	OCCGM g=10% o=30% m=60%	0.885
140.00	CO o=100%	0.688

Total Length: 320.00 ft Total Volume: 1.573 bbl

Num Fluid Samples: 0

Num Gas Bombs: 0

Serial #:

Laboratory Name:

Laboratory Location:

Recovery Comments:

