



**TRILOBITE TESTING, INC.**

# DRILL STEM TEST REPORT

Berexco LLC  
 2020 N Bramblewood  
 Wichita Ks 67206 + 1094  
 ATTN: Bruce Meyer

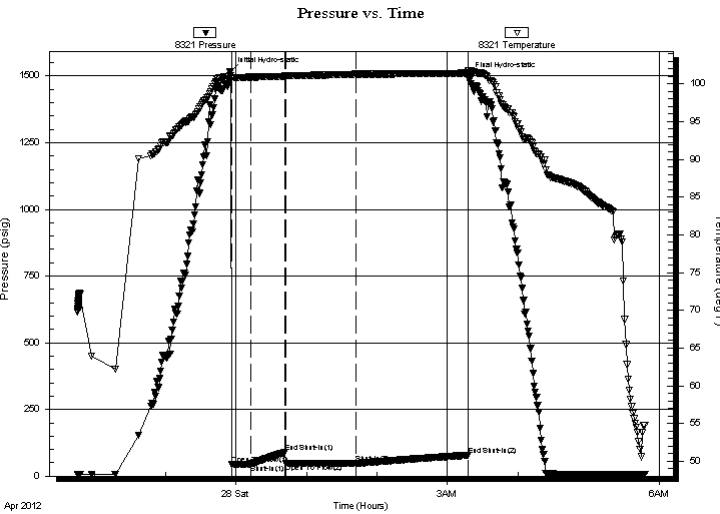
**30-14s-14w**  
**Schwie n #1**  
 Job Ticket: 44781 **DST#: 1**  
 Test Start: 2012.04.27 @ 21:45:20

## GENERAL INFORMATION:

Formation: **Lansing-A-B-C**  
 Deviated: No Whipstock: ft (KB)  
 Time Tool Opened: 23:56:20  
 Time Test Ended: 05:48:50  
 Interval: **2976.00 ft (KB) To 3050.00 ft (KB) (TVD)**  
 Total Depth: 3050.00 ft (KB) (TVD)  
 Hole Diameter: 7.88 inches Hole Condition: Good  
 Test Type: Conventional Bottom Hole (Initial)  
 Tester: Jeff Brown  
 Unit No: 44  
 Reference Elevations: 1829.00 ft (KB)  
 1819.00 ft (CF)  
 KB to GR/CF: 10.00 ft

**Serial #: 8321 Inside**  
 Press @ Run Depth: 48.70 psig @ 3014.00 ft (KB) Capacity: 8000.00 psig  
 Start Date: 2012.04.27 End Date: 2012.04.28 Last Calib.: 2012.04.28  
 Start Time: 21:45:21 End Time: 05:47:50 Time On Btm: 2012.04.27 @ 23:55:50  
 Time Off Btm: 2012.04.28 @ 03:17:50

**TEST COMMENT:** IFP-Weak blow built to 1 in  
 ISI-Dead no blow back  
 FFP-Dead no blow  
 FSI-Dead no blow back



## PRESSURE SUMMARY

Time (Min.)	Pressure (psig)	Temp (deg F)	Annotation
0	1517.84	101.06	Initial Hydro-static
1	43.68	100.80	Open To Flow (1)
17	45.77	100.89	Shut-In(1)
46	89.42	101.01	End Shut-In(1)
47	47.32	100.99	Open To Flow (2)
107	48.70	101.27	Shut-In(2)
202	78.36	101.41	End Shut-In(2)
202	1498.89	101.78	Final Hydro-static

## Recovery

Length (ft)	Description	Volume (bbl)
10.00	Mud with oil spots	0.05

## Gas Rates

Choke (inches)	Pressure (psig)	Gas Rate (Mcf/d)



**TRILOBITE TESTING, INC.**

# DRILL STEM TEST REPORT

Berexco LLC  
2020 N Bramblewood  
Wichita Ks 67206 + 1094  
ATTN: Bruce Meyer

**30-14s-14w**  
**Schwie n #1**  
Job Ticket: 44781      **DST#: 1**  
Test Start: 2012.04.27 @ 21:45:20

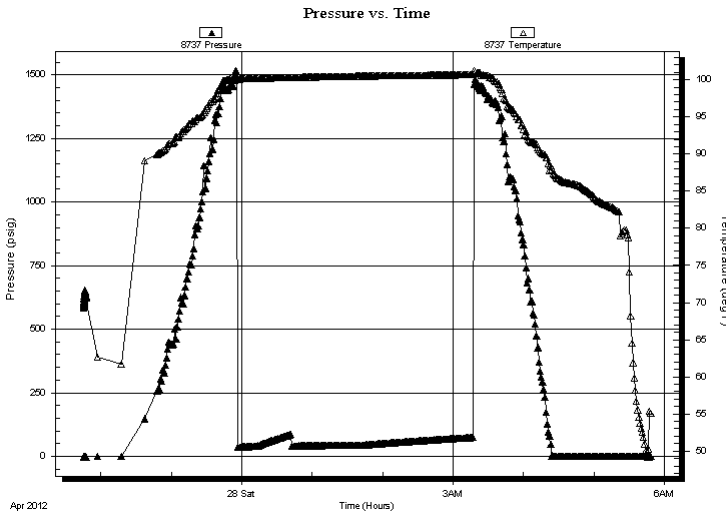
## GENERAL INFORMATION:

Formation: **Lansing-A-B-C**  
Deviated: No Whipstock:      ft (KB)  
Time Tool Opened: 23:56:20  
Time Test Ended: 05:48:50  
Interval: **2976.00 ft (KB) To 3050.00 ft (KB) (TVD)**  
Total Depth: 3050.00 ft (KB) (TVD)  
Hole Diameter: 7.88 inches Hole Condition: Good  
Test Type: Conventional Bottom Hole (Initial)  
Tester: Jeff Brown  
Unit No: 44  
Reference Elevations: 1829.00 ft (KB)  
1819.00 ft (CF)  
KB to GR/CF: 10.00 ft

**Serial #: 8737      Outside**  
Press@RunDepth:      psig @ 3014.00 ft (KB)  
Start Date: 2012.04.27      End Date: 2012.04.28  
Start Time: 21:45:31      End Time: 05:48:00  
Capacity: 8000.00 psig  
Last Calib.: 2012.04.28  
Time On Btm:  
Time Off Btm:

**TEST COMMENT:** IFP-Weak blow built to 1 in  
ISI-Dead no blow back  
FFP-Dead no blow  
FSI-Dead no blow back

## PRESSURE SUMMARY



Time (Min.)	Pressure (psig)	Temp (deg F)	Annotation

## Recovery

Length (ft)	Description	Volume (bbl)
10.00	Mud w ith oil spots	0.05

## Gas Rates

Choke (inches)	Pressure (psig)	Gas Rate (Mcf/d)



**TRILOBITE  
TESTING, INC.**

# DRILL STEM TEST REPORT

## FLUID SUMMARY

Berexco LLC

**30-14s-14w**

2020 N Bramblewood  
Wichita Ks 67206 + 1094

**Schwien #1**

Job Ticket: 44781

**DST#: 1**

ATTN: Bruce Meyer

Test Start: 2012.04.27 @ 21:45:20

### Mud and Cushion Information

Mud Type: Gel Chem

Cushion Type:

Oil API:

deg API

Mud Weight: 9.00 lb/gal

Cushion Length:

ft

Water Salinity:

ppm

Viscosity: 49.00 sec/qt

Cushion Volume:

bbbl

Water Loss: 8.19 in<sup>3</sup>

Gas Cushion Type:

Resistivity: ohm.m

Gas Cushion Pressure:

psig

Salinity: 4000.00 ppm

Filter Cake: inches

### Recovery Information

Recovery Table

Length ft	Description	Volume bbl
10.00	Mud with oil spots	0.049

Total Length: 10.00 ft      Total Volume: 0.049 bbl

Num Fluid Samples: 0

Num Gas Bombs: 0

Serial #:

Laboratory Name:

Laboratory Location:

Recovery Comments:

### Pressure vs. Time

