



**TRILOBITE TESTING, INC.**

# DRILL STEM TEST REPORT

Berexco LLC  
 2020 N Bramblewood  
 Wichita Ks 67206 + 1094  
 ATTN: Bruce Meyer

**30-14s-14w**  
**Schwien #1**  
 Job Ticket: 44782      **DST#: 2**  
 Test Start: 2012.04.28 @ 15:10:20

## GENERAL INFORMATION:

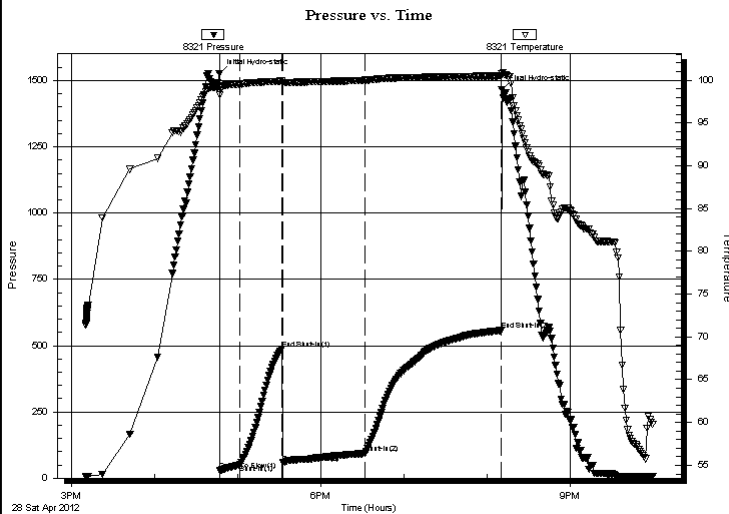
Formation: **Lansing-F & G**  
 Deviated: No Whipstock:      ft (KB)  
 Time Tool Opened: 16:47:20  
 Time Test Ended: 22:00:20  
 Interval: **3055.00 ft (KB) To 3100.00 ft (KB) (TVD)**  
 Total Depth: 3100.00 ft (KB) (TVD)  
 Hole Diameter: 7.88 inches Hole Condition: Good  
 Test Type: Conventional Bottom Hole (Reset)  
 Tester: Jeff Brown  
 Unit No: 44  
 Reference Elevations: 1829.00 ft (KB)  
 1819.00 ft (CF)  
 KB to GR/CF: 10.00 ft

## Serial #: 8321

Inside

Press @ Run Depth: 93.45 psig @ 3060.00 ft (KB)      Capacity: 8000.00 psig  
 Start Date: 2012.04.28      End Date: 2012.04.28      Last Calib.: 2012.04.28  
 Start Time: 15:10:21      End Time: 22:00:20      Time On Btm: 2012.04.28 @ 16:46:50  
 Time Off Btm: 2012.04.28 @ 20:10:50

**TEST COMMENT:** IFP-Good Blow BOB in 7 1/2 min  
 ISI-Weak surface blow back died out in 5 min  
 FFP-Strong blow BOB in 2 1/2 min  
 FSI-Weak surface blow back built to 1/8 in died out in 18 min



## PRESSURE SUMMARY

Time (Min.)	Pressure (psig)	Temp (deg F)	Annotation
0	1527.30	99.14	Initial Hydro-static
1	29.47	98.23	Open To Flow (1)
15	50.13	99.50	Shut-In(1)
45	486.03	99.86	End Shut-In(1)
46	57.17	99.73	Open To Flow (2)
106	93.45	99.98	Shut-In(2)
204	556.81	100.49	End Shut-In(2)
204	1466.35	100.72	Final Hydro-static

## Recovery

Length (ft)	Description	Volume (bbl)
60.00	OCGM 10%G 10%O 80%M	0.30
120.00	HOCGM 40%G 30%O 30%M	0.59
0.00	887-GIP	0.00

## Gas Rates

Choke (inches)	Pressure (psig)	Gas Rate (Mcf/d)

\* Recovery from multiple tests





**TRILOBITE  
TESTING, INC.**

# DRILL STEM TEST REPORT

**FLUID SUMMARY**

Berexco LLC

**30-14s-14w**

2020 N Bramblewood  
Wichita Ks 67206 + 1094

**Schwien #1**

Job Ticket: 44782

**DST#: 2**

ATTN: Bruce Meyer

Test Start: 2012.04.28 @ 15:10:20

## Mud and Cushion Information

Mud Type: Gel Chem

Cushion Type:

Oil API:

deg API

Mud Weight: 9.00 lb/gal

Cushion Length:

ft

Water Salinity:

ppm

Viscosity: 50.00 sec/qt

Cushion Volume:

bbbl

Water Loss: 9.19 in<sup>3</sup>

Gas Cushion Type:

Resistivity: ohm.m

Gas Cushion Pressure:

psig

Salinity: 5000.00 ppm

Filter Cake: inches

## Recovery Information

Recovery Table

Length ft	Description	Volume bbbl
60.00	OCCGM 10%G 10%O 80%M	0.295
120.00	HOCGM 40%G 30%O 30%M	0.590
0.00	887-GIP	0.000

Total Length: 180.00 ft      Total Volume: 0.885 bbl

Num Fluid Samples: 0

Num Gas Bombs: 0

Serial #:

Laboratory Name:

Laboratory Location:

Recovery Comments:

Serial #: 8321

Inside

Berexco LLC

Schwien #1

DST Test Number: 2

### Pressure vs. Time

