



DRILL STEM TEST REPORT

Prepared For: **LB Exploration**

2135 2nd Road
Holyrood, Kansas 67460

ATTN: Steven Peterson

14/32S/14W/Barber

Larkin 14

Start Date: 2011.10.04 @ 08:56:00

End Date: 2011.10.04 @ 16:36:30

Job Ticket #: 18778 DST #: 3

Superior Testers Enterprises LLC
PO Box 138 Great Bend KS 67530
1-800-792-6902

Printed: 2011.10.04 @ 15:08:08

LB Exploration
Larkin 14
14/32S/14W/Barber
DST # 3
Lansing
2011.10.04



DRILL STEM TEST REPORT

LB Exploration
 2135 2nd Road
 Holyrood, Kansas 67460
 ATTN: Steven Peterson

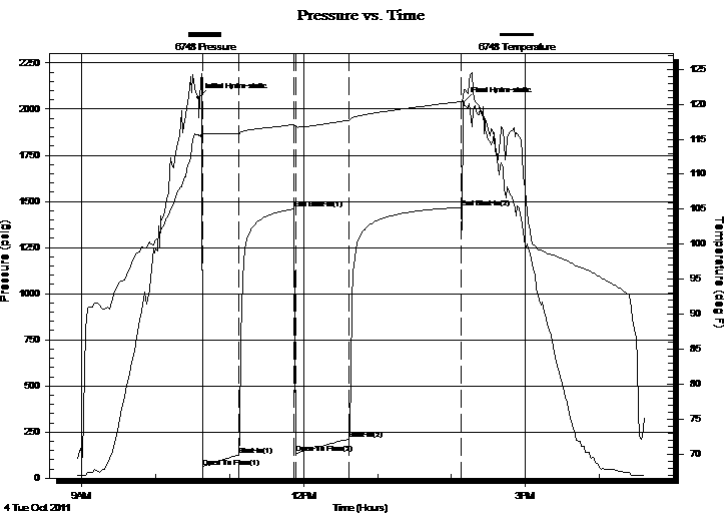
Larkin 14
14/32S/14W/Barber
 Job Ticket: 18778 **DST#: 3**
 Test Start: 2011.10.04 @ 08:56:00

GENERAL INFORMATION:

Formation: **Lansing**
 Deviated: No Whipstock: ft (KB)
 Time Tool Opened: 10:38:30
 Time Test Ended: 16:36:30
 Interval: **4302.00 ft (KB) To 4359.00 ft (KB) (TVD)**
 Total Depth: 4359.00 ft (KB) (TVD)
 Hole Diameter: 7.88 inches Hole Condition: Fair
 Test Type: Conventional Bottom Hole (Initial)
 Tester: Ken Swinney
 Unit No: 3325 Pratt/96
 Reference Elevations: 2010.00 ft (KB)
 1997.00 ft (CF)
 KB to GR/CF: 13.00 ft

Serial #: 6748 Outside
 Press @ RunDepth: 211.46 psig @ 4355.54 ft (KB) Capacity: 5000.00 psig
 Start Date: 2011.10.04 End Date: 2011.10.04 Last Calib.: 2011.10.04
 Start Time: 08:56:00 End Time: 16:36:30 Time On Btm: 2011.10.04 @ 10:35:00
 Time Off Btm: 2011.10.04 @ 14:10:00

TEST COMMENT: 1ST Open 30 Minutes/Fair blow/Blow built to bottom of bucket in 10 minutes
 1ST Shut In 45 Minutes/No blow back
 2ND Open 45 Minutes/Fair blow/Blow built to bottom of bucket in 26 minutes
 2ND Shut In 90 Minutes/Very weak surface blow back



PRESSURE SUMMARY

Time (Min.)	Pressure (psig)	Temp (deg F)	Annotation
0	2062.70	115.61	Initial Hydro-static
4	60.33	115.77	Open To Flow (1)
33	126.06	115.81	Shut-In(1)
78	1459.68	117.11	End Shut-In(1)
79	133.76	116.76	Open To Flow (2)
122	211.46	117.72	Shut-In(2)
213	1467.90	120.39	End Shut-In(2)
215	2040.27	122.09	Final Hydro-static

Recovery

Length (ft)	Description	Volume (bbl)
10.00	Oil cut Mud	0.15
0.00	10% Oil 90% Mud	0.00
120.00	Watery Mud with show of oil	1.75
0.00	50% Water 50% Mud	0.00
120.00	Muddy water	1.75
0.00	10% Mud 90% Water	0.00

Gas Rates

Choke (inches)	Pressure (psig)	Gas Rate (Mcf/d)



DRILL STEM TEST REPORT

LB Exploration
 2135 2nd Road
 Holyrood, Kansas 67460
 ATTN: Steven Peterson

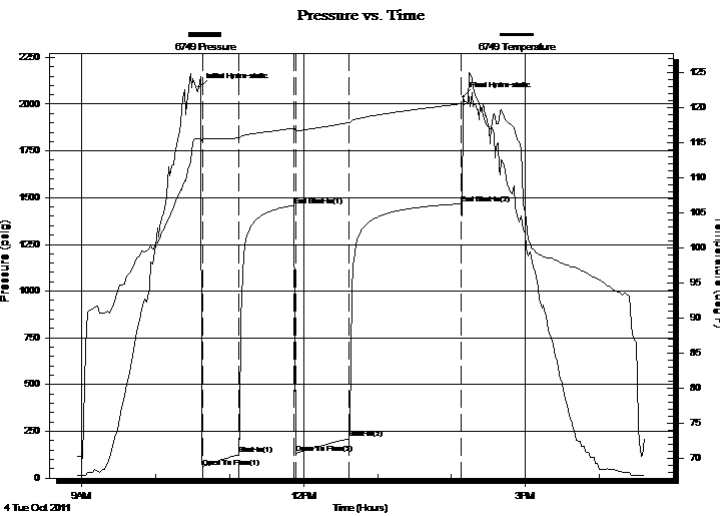
Larkin 14
14/32S/14W/Barber
 Job Ticket: 18778 **DST#: 3**
 Test Start: 2011.10.04 @ 08:56:00

GENERAL INFORMATION:

Formation: Lansing		Test Type: Conventional Bottom Hole (Initial)
Deviated: No Whipstock:	ft (KB)	Tester: Ken Swinney
Time Tool Opened: 10:38:30		Unit No: 3325 Pratt/96
Time Test Ended: 16:36:30		
Interval: 4302.00 ft (KB) To 4359.00 ft (KB) (TVD)		Reference Elevations: 2010.00 ft (KB)
Total Depth: 4359.00 ft (KB) (TVD)		1997.00 ft (CF)
Hole Diameter: 7.88 inches	Hole Condition: Fair	KB to GR/CF: 13.00 ft

Serial #: 6749	Inside				
Press @ Run Depth: 1466.28 psig @	4354.54 ft (KB)	Capacity:	5000.00 psig		
Start Date: 2011.10.04	End Date: 2011.10.04	Last Calib.:	2011.10.04		
Start Time: 08:56:00	End Time: 16:36:30	Time On Btm:	2011.10.04 @ 10:35:30		
		Time Off Btm:	2011.10.04 @ 14:09:30		

TEST COMMENT: 1ST Open 30 Minutes/Fair blow/Blow built to bottom of bucket in 10 minutes
 1ST Shut In 45 Minutes/No blow back
 2ND Open 45 Minutes/Fair blow/Blow built to bottom of bucket in 26 minutes
 2ND Shut In 90 Minutes/Very weak surface blow back



PRESSURE SUMMARY

Time (Min.)	Pressure (psig)	Temp (deg F)	Annotation
0	2089.14	115.61	Initial Hydro-static
3	60.55	115.63	Open To Flow (1)
32	125.94	115.66	Shut-In(1)
77	1459.15	117.09	End Shut-In(1)
78	133.31	116.77	Open To Flow (2)
122	211.19	117.87	Shut-In(2)
213	1466.28	120.55	End Shut-In(2)
214	2040.30	120.48	Final Hydro-static

Recovery

Length (ft)	Description	Volume (bbl)
10.00	Oil cut Mud	0.15
0.00	10% Oil 90% Mud	0.00
120.00	Watery Mud with show of oil	1.75
0.00	50% Water 50% Mud	0.00
120.00	Muddy water	1.75
0.00	10% Mud 90% Water	0.00

Gas Rates

	Choke (inches)	Pressure (psig)	Gas Rate (Mcf/d)



DRILL STEM TEST REPORT

TOOL DIAGRAM

LB Exploration
 2135 2nd Road
 Holyrood, Kansas 67460
 ATTN: Steven Peterson

Larkin 14
14/32S/14W/Barber
 Job Ticket: 18778 **DST#: 3**
 Test Start: 2011.10.04 @ 08:56:00

Tool Information

Drill Pipe:	Length: 4288.00 ft	Diameter: 3.88 inches	Volume: 62.71 bbl	Tool Weight: 2000.00 lb
Heavy Wt. Pipe:	Length: 0.00 ft	Diameter: 0.00 inches	Volume: 0.00 bbl	Weight set on Packer: 20000.00 lb
Drill Collar:	Length: 0.00 ft	Diameter: 0.00 inches	Volume: 0.00 bbl	Weight to Pull Loose: 56000.00 lb
			<u>Total Volume: 62.71 bbl</u>	Tool Chased 0.00 ft
Drill Pipe Above KB:	14.75 ft			String Weight: Initial 47000.00 lb
Depth to Top Packer:	4302.00 ft			Final 51000.00 lb
Depth to Bottom Packer:	ft			
Interval between Packers:	56.54 ft			
Tool Length:	85.29 ft			
Number of Packers:	2	Diameter: 6.75 inches		

Tool Comments:

Tool Description	Length (ft)	Serial No.	Position	Depth (ft)	Accum. Lengths
Shut-in tool	5.00			4278.25	
Hydraulic tool	5.00			4283.25	
Change over sub	0.75			4284.00	
Jars	6.00			4290.00	
Safety Joint	2.00			4292.00	
Packer	5.00			4297.00	28.75 Bottom Of Top Packer
Packer	5.00			4302.00	
Anchor	0.00			4302.00	
change over sub	0.75			4302.75	
drill pipe	31.04			4333.79	
change over sub	0.75			4334.54	
anchor	19.00			4353.54	
Recorder	1.00	6749	Inside	4354.54	
Recorder	1.00	6748	Outside	4355.54	
bull plug	3.00			4358.54	56.54 Bottom Packers & Anchor

Total Tool Length: 85.29



DRILL STEM TEST REPORT

FLUID SUMMARY

LB Exploration
 2135 2nd Road
 Holyrood, Kansas 67460
 ATTN: Steven Peterson

Larkin 14
14/32S/14W/Barber
 Job Ticket: 18778 **DST#: 3**
 Test Start: 2011.10.04 @ 08:56:00

Mud and Cushion Information

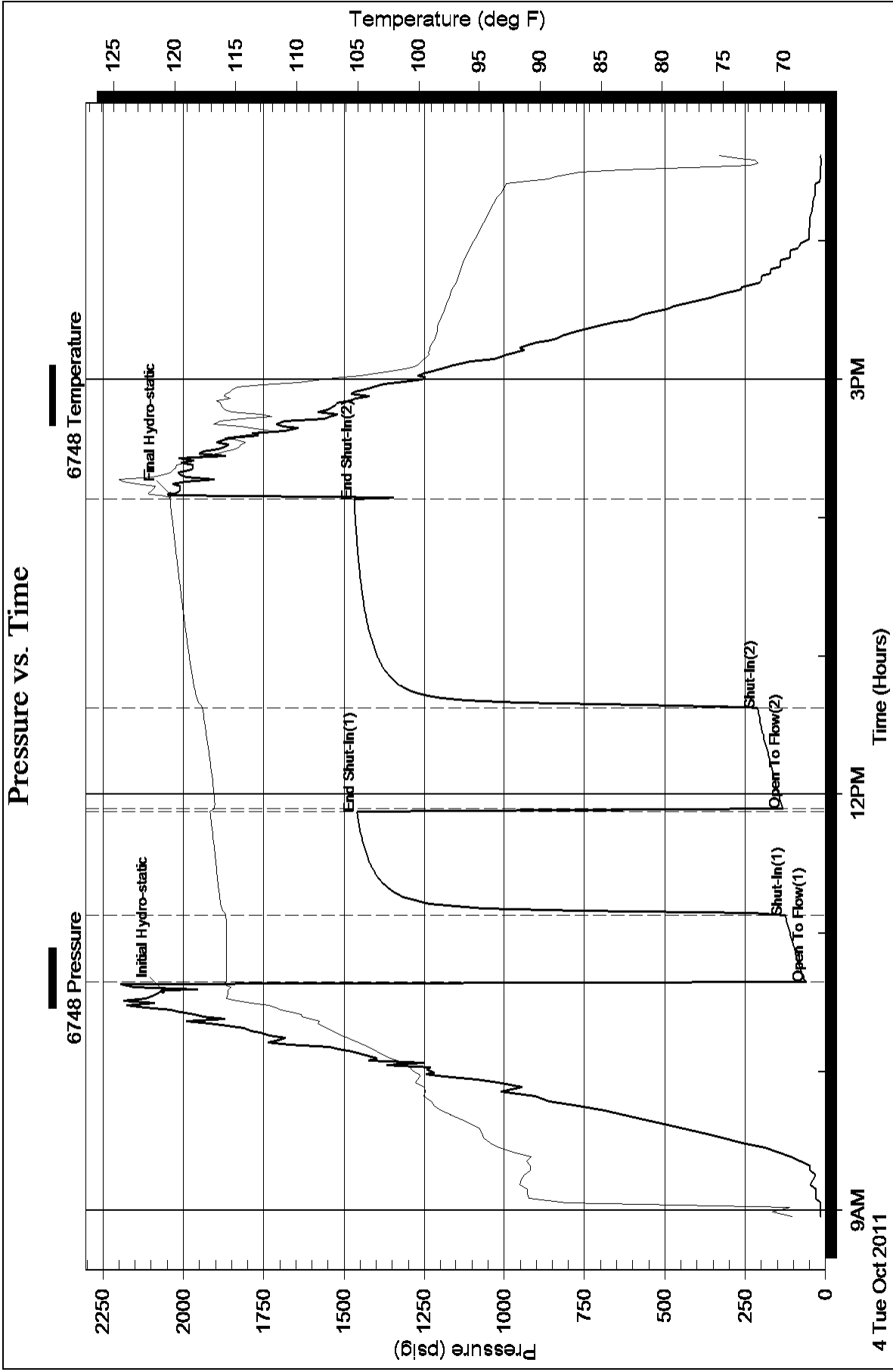
Mud Type: Gel Chem	Cushion Type:	Oil API:	deg API
Mud Weight: 9.00 lb/gal	Cushion Length: ft	Water Salinity:	ppm
Viscosity: 50.00 sec/qt	Cushion Volume: bbl		
Water Loss: 11.99 in ³	Gas Cushion Type:		
Resistivity: ohm.m	Gas Cushion Pressure: psig		
Salinity: 6000.00 ppm			
Filter Cake: 2.00 inches			

Recovery Information

Recovery Table

Length ft	Description	Volume bbl
10.00	Oil cut Mud	0.146
0.00	10% Oil 90% Mud	0.000
120.00	Watery Mud w ith show of oil	1.755
0.00	50% Water 50% Mud	0.000
120.00	Muddy w ater	1.755
0.00	10% Mud 90% Water	0.000
60.00	Watery Mud	0.877
0.00	5% Water 95% Mud	0.000
0.00	2100 feet Gas in pipe	0.000
0.00	Recovery Chlorides 95000 ppm	0.000

Total Length: 310.00 ft Total Volume: 4.533 bbl
 Num Fluid Samples: 0 Num Gas Bombs: 0 Serial #:
 Laboratory Name: Laboratory Location:
 Recovery Comments:



Pressure vs. Time

