



DRILL STEM TEST REPORT

Prepared For: **LB Exploration**

2135 2nd Road
Holyrood, Kansas 67460

ATTN: Steven Peterson

14/32S/14W/Barber

Larkin 14

Start Date: 2011.10.08 @ 17:33:00

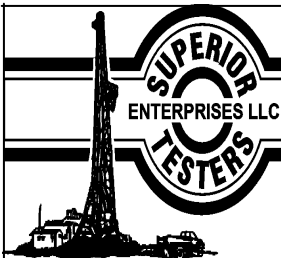
End Date: 2011.10.09 @ 04:46:00

Job Ticket #: 18781 DST #: 6

Superior Testers Enterprises LLC
PO Box 138 Great Bend KS 67530
1-800-792-6902

Printed: 2011.10.09 @ 03:10:18

LB Exploration
Larkin 14
14/32S/14W/Barber
DST # 6
Simpson
2011.10.08



DRILL STEM TEST REPORT

LB Exploration
2135 2nd Road
Holyrood, Kansas 67460
ATTN: Steven Peterson

Larkin 14
14/32S/14W/Barber
Job Ticket: 18781 **DST#: 6**
Test Start: 2011.10.08 @ 17:33:00

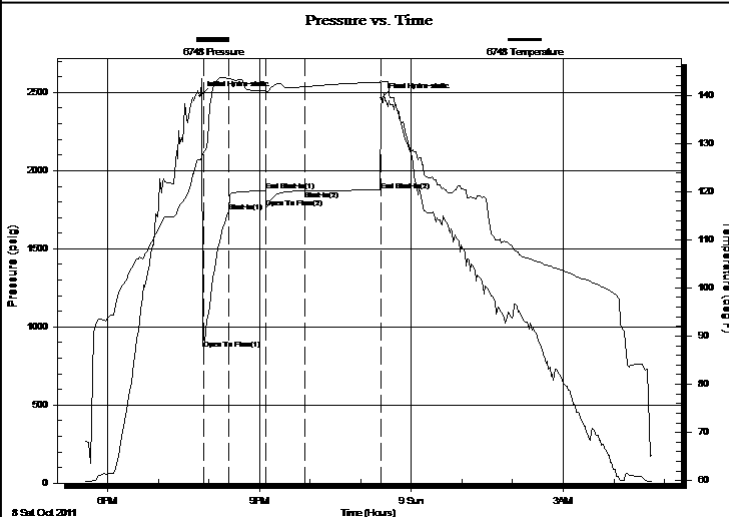
GENERAL INFORMATION:

Formation: **Simpson**
Deviated: No Whipstock: ft (KB)
Time Tool Opened: 19:53:30
Time Test Ended: 04:46:00
Interval: **5099.00 ft (KB) To 5185.00 ft (KB) (TVD)**
Total Depth: 5185.00 ft (KB) (TVD)
Hole Diameter: 7.88 inches Hole Condition: Fair
Test Type: Conventional Bottom Hole (Initial)
Tester: Ken Swinney
Unit No: 3325 Pratt/96
Reference Elevations: 2010.00 ft (KB)
1997.00 ft (CF)
KB to GR/CF: 13.00 ft

Serial #: 6748 Outside

Press @ RunDepth: 1870.83 psig @ 5182.49 ft (KB) Capacity: 5000.00 psig
Start Date: 2011.10.08 End Date: 2011.10.09 Last Calib.: 2011.10.09
Start Time: 17:33:00 End Time: 04:46:00 Time On Btm: 2011.10.08 @ 19:50:00
Time Off Btm: 2011.10.08 @ 23:25:00

TEST COMMENT: 1ST Open 30 Mintues/Strong blow /Blow to bottom of bucket in 1 minute/Gas to surface in 15 minutes
1ST Shut In 45 Minutes/Blow back built to 5 inches
2ND Open 45 Minutes/Strong blow /Blow to bottom of bucket in 1 minute
2ND Shut In 90 Minutes/Weak surface



PRESSURE SUMMARY

Time (Min.)	Pressure (psig)	Temp (deg F)	Annotation
0	2478.04	126.67	Initial Hydro-static
4	856.24	128.09	Open To Flow (1)
34	1737.49	143.46	Shut-In(1)
78	1871.60	140.81	End Shut-In(1)
78	1759.26	140.75	Open To Flow (2)
124	1870.83	141.75	Shut-In(2)
214	1874.48	142.66	End Shut-In(2)
215	2464.10	142.81	Final Hydro-static

Recovery

Length (ft)	Description	Volume (bbl)
3784.00	Gassy muddy w ater	55.34
0.00	Gas 5% Mud 5% Water 90%	0.00
60.00	Mud 100%	0.88
0.00	Recovery Chlorides 55000 ppm	0.00
0.00	Resistivity .18 at 60 degrees	0.00

Gas Rates

	Choke (inches)	Pressure (psig)	Gas Rate (Mcf/d)
First Gas Rate	0.25	4.73	7.73
Last Gas Rate	0.13	1.25	0.52
Max. Gas Rate	0.25	4.73	7.73



DRILL STEM TEST REPORT

LB Exploration
 2135 2nd Road
 Holyrood, Kansas 67460
 ATTN: Steven Peterson

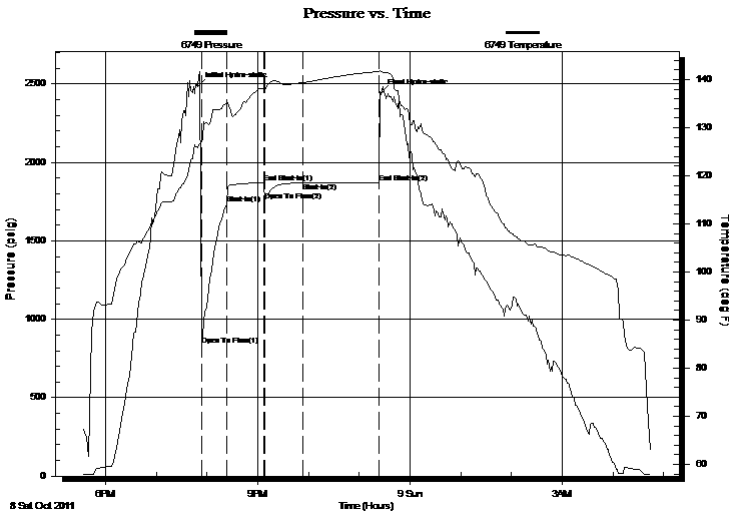
Larkin 14
14/32S/14W/Barber
 Job Ticket: 18781 **DST#: 6**
 Test Start: 2011.10.08 @ 17:33:00

GENERAL INFORMATION:

Formation: **Simpson**
 Deviated: No Whipstock: ft (KB)
 Time Tool Opened: 19:53:30
 Time Test Ended: 04:46:00
 Interval: **5099.00 ft (KB) To 5185.00 ft (KB) (TVD)**
 Total Depth: 5185.00 ft (KB) (TVD)
 Hole Diameter: 7.88 inches Hole Condition: Fair
 Test Type: Conventional Bottom Hole (Initial)
 Tester: Ken Swinney
 Unit No: 3325 Pratt/96
 Reference Elevations: 2010.00 ft (KB)
 1997.00 ft (CF)
 KB to GR/CF: 13.00 ft

Serial #: 6749 Inside
 Press @ RunDepth: 1872.20 psig @ 5181.49 ft (KB) Capacity: 5000.00 psig
 Start Date: 2011.10.08 End Date: 2011.10.09 Last Calib.: 2011.10.09
 Start Time: 17:33:00 End Time: 04:45:50 Time On Btm: 2011.10.08 @ 19:49:30
 Time Off Btm: 2011.10.08 @ 23:25:30

TEST COMMENT: 1ST Open 30 Mintues/Strong blow /Blow to bottom of bucket in 1 minute/Gas to surface in 15 minutes
 1ST Shut In 45 Minutes/Blow back built to 5 inches
 2ND Open 45 Minutes/Strong blow /Blow to bottom of bucket in 1 minute
 2ND Shut In 90 Minutes/Weak surface



PRESSURE SUMMARY

Time (Min.)	Pressure (psig)	Temp (deg F)	Annotation
0	2484.51	125.91	Initial Hydro-static
4	835.25	127.08	Open To Flow (1)
34	1737.63	135.09	Shut-In(1)
78	1870.27	138.02	End Shut-In(1)
79	1758.19	138.01	Open To Flow (2)
124	1869.61	139.41	Shut-In(2)
214	1872.20	141.71	End Shut-In(2)
216	2441.68	141.69	Final Hydro-static

Recovery

Length (ft)	Description	Volume (bbl)
3784.00	Gassy muddy w ater	55.34
0.00	Gas 5% Mud 5% Water 90%	0.00
60.00	Mud 100%	0.88
0.00	Recovery Chlorides 55000 ppm	0.00
0.00	Resistivity .18 at 60 degrees	0.00

Gas Rates

	Choke (inches)	Pressure (psig)	Gas Rate (Mcf/d)
First Gas Rate	0.25	4.73	7.73
Last Gas Rate	0.13	1.25	0.52
Max. Gas Rate	0.25	4.73	7.73



DRILL STEM TEST REPORT

TOOL DIAGRAM

LB Exploration
 2135 2nd Road
 Holyrood, Kansas 67460
 ATTN: Steven Peterson

Larkin 14
14/32S/14W/Barber
 Job Ticket: 18781 **DST#: 6**
 Test Start: 2011.10.08 @ 17:33:00

Tool Information

Drill Pipe:	Length: 5078.00 ft	Diameter: 3.88 inches	Volume: 74.26 bbl	Tool Weight:	2000.00 lb
Heavy Wt. Pipe:	Length: 0.00 ft	Diameter: 0.00 inches	Volume: 0.00 bbl	Weight set on Packer:	20000.00 lb
Drill Collar:	Length: 0.00 ft	Diameter: 0.00 inches	Volume: 0.00 bbl	Weight to Pull Loose:	70000.00 lb
			<u>Total Volume: 74.26 bbl</u>	Tool Chased	0.00 ft
Drill Pipe Above KB:	7.75 ft			String Weight: Initial	51000.00 lb
Depth to Top Packer:	5099.00 ft			Final	65000.00 lb
Depth to Bottom Packer:	ft				
Interval between Packers:	86.49 ft				
Tool Length:	115.24 ft				
Number of Packers:	2	Diameter: 6.75 inches			

Tool Comments:

Tool Description	Length (ft)	Serial No.	Position	Depth (ft)	Accum. Lengths
Shut-in tool	5.00			5075.25	
Hydraulic tool	5.00			5080.25	
Change over sub	0.75			5081.00	
Jars	6.00			5087.00	
Safety Joint	2.00			5089.00	
Packer	5.00			5094.00	28.75 Bottom Of Top Packer
Packer	5.00			5099.00	
Anchor	0.00			5099.00	
change over sub	0.75			5099.75	
drill pipe	63.99			5163.74	
change over sub	0.75			5164.49	
anchor	16.00			5180.49	
Recorder	1.00	6749	Inside	5181.49	
Recorder	1.00	6748	Outside	5182.49	
bull plug	3.00			5185.49	86.49 Bottom Packers & Anchor

Total Tool Length: 115.24



DRILL STEM TEST REPORT

FLUID SUMMARY

LB Exploration

Larkin 14

2135 2nd Road
Holyrood, Kansas 67460

14/32S/14W/Barber

Job Ticket: 18781

DST#: 6

ATTN: Steven Peterson

Test Start: 2011.10.08 @ 17:33:00

Mud and Cushion Information

Mud Type: Gel Chem
Mud Weight: 9.00 lb/gal
Viscosity: 49.00 sec/qt
Water Loss: 18.80 in³
Resistivity: ohm.m
Salinity: 8000.00 ppm
Filter Cake: 2.00 inches

Cushion Type:
Cushion Length: ft
Cushion Volume: bbl
Gas Cushion Type:
Gas Cushion Pressure: psig

Oil API: deg API
Water Salinity: ppm

Recovery Information

Recovery Table

Length ft	Description	Volume bbl
3784.00	Gassy muddy water	55.338
0.00	Gas 5% Mud 5% Water 90%	0.000
60.00	Mud 100%	0.877
0.00	Recovery Chlorides 55000 ppm	0.000
0.00	Resistivity .18 at 60 degrees	0.000

Total Length: 3844.00 ft Total Volume: 56.215 bbl

Num Fluid Samples: 0 Num Gas Bombs: 0 Serial #:

Laboratory Name: Laboratory Location:

Recovery Comments: After 20 minutes in second open gas flow to low to guage



DRILL STEM TEST REPORT

GAS RATES

LB Exploration
2135 2nd Road
Holyrood, Kansas 67460
ATTN: Steven Peterson

Larkin 14
14/32S/14W/Barber
Job Ticket: 18781 **DST#: 6**
Test Start: 2011.10.08 @ 17:33:00

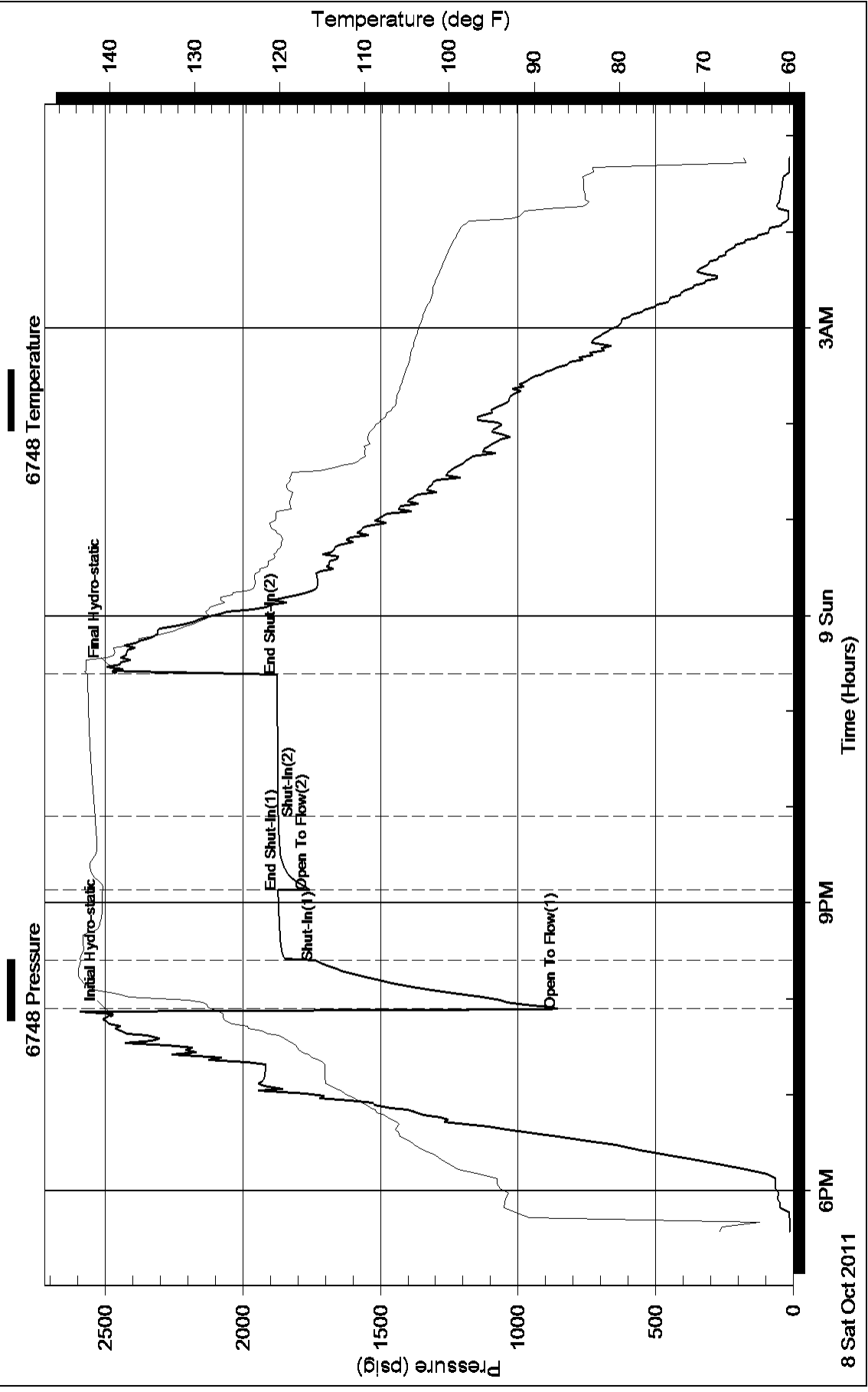
Gas Rates Information

Temperature: 59 (deg F)
Relative Density: 0.65
Z Factor: 0.8

Gas Rates Table

Flow Period	Elapsed Time	Choke (inches)	Pressure (psig)	Gas Rate (Mcf/d)
1	20	0.25	4.73	7.73
1	30	0.25	3.25	5.38
2	10	0.13	4.30	1.66
2	20	0.13	1.25	0.52

Pressure vs. Time



Pressure vs. Time

