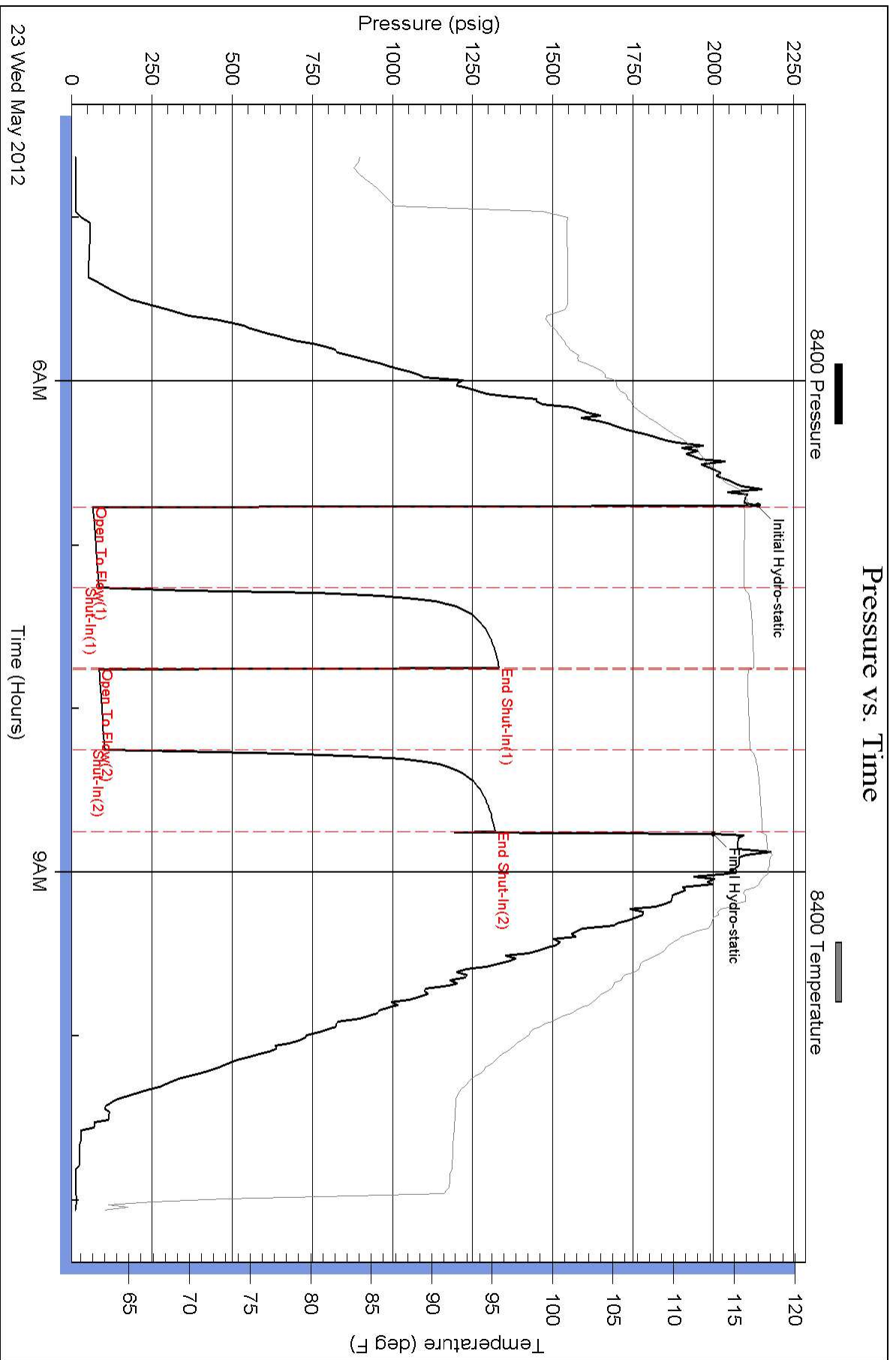


Pressure vs. Time





DRILL STEM TEST REPORT

FLUID SUMMARY

G.L. Allison Oil Operations Inc.

21-12s-32w-Logan

15 South East 30 Road Great Bend Kansas
67530

Younkin 21-B

Job Ticket: 17296

DST#: 1

ATTN: Kevin Bailey

Test Start: 2012.05.23 @ 04:37:00

Mud and Cushion Information

Mud Type: Gel Chem
 Mud Weight: 9.00 lb/gal
 Viscosity: 48.00 sec/qt
 Water Loss: 8.80 in³
 Resistivity: ohm.m
 Salinity: 1500.00 ppm
 Filter Cake: 1.00 inches

Cushion Type:
 Cushion Length: ft
 Cushion Volume: bbl
 Gas Cushion Type:
 Gas Cushion Pressure: psig

Oil API: deg API
 Water Salinity: ppm

Recovery Information

Recovery Table

Length ft	Description	Volume bbl
71.00	Very slightly oil spotted mud	0.996
0.00	1%Oi 99%Mud	0.000

Total Length: 71.00 ft Total Volume: 0.996 bbl

Num Fluid Samples: 0

Num Gas Bombs: 0

Serial #:

Laboratory Name:

Laboratory Location:

Recovery Comments:



DRILL STEM TEST REPORT

TOOL DIAGRAM

G.L. Allison Oil Operations Inc.

21-12s-32w-Logan

15 South East 30 Road Great Bend Kansas
67530

Younkin 21-B

Job Ticket: 17296

DST#: 1

ATTN: Kevin Bailey

Test Start: 2012.05.23 @ 04:37:00

Tool Information

Drill Pipe:	Length: 4182.00 ft	Diameter: 3.80 inches	Volume: 58.66 bbl	Tool Weight: 2000.00 lb
Heavy Wt. Pipe:	Length: 0.00 ft	Diameter: 0.00 inches	Volume: 0.00 bbl	Weight set on Packer: 20000.00 lb
Drill Collar:	Length: 0.00 ft	Diameter: 0.00 inches	Volume: 0.00 bbl	Weight to Pull Loose: 80000.00 lb
			<u>Total Volume: 58.66 bbl</u>	Tool Chased 0.00 ft
Drill Pipe Above KB:	20.00 ft			String Weight: Initial 55000.00 lb
Depth to Top Packer:	4190.00 ft			Final 55000.00 lb
Depth to Bottom Packer:	ft			
Interval between Packers:	73.79 ft			
Tool Length:	101.79 ft			
Number of Packers:	2	Diameter: 6.75 inches		
Tool Comments:				

Tool Description	Length (ft)	Serial No.	Position	Depth (ft)	Accum. Lengths
------------------	-------------	------------	----------	------------	----------------

Shut-In Tool	5.00			4167.00	
Hydraulic Tool	5.00			4172.00	
Jars	6.00			4178.00	
Safety Joint	2.00			4180.00	
Packer	5.00			4185.00	28.00 Bottom Of Top Packer
Packer	5.00			4190.00	
Anchor	5.00			4195.00	
Change Over Sub	0.75			4195.75	
Drill Pipe	31.29			4227.04	
Change Over Sub	0.75			4227.79	
Anchor	31.00			4258.79	
Recorder	1.00	8400	Inside	4259.79	
Recorder	1.00	8405	Outside	4260.79	
Bull Plug	3.00			4263.79	73.79 Bottom Packers & Anchor

Total Tool Length: 101.79



DRILL STEM TEST REPORT

G.L. Allison Oil Operations Inc.

21-12s-32w-Logan

15 South East 30 Road Great Bend Kansas
67530

Younkin 21-B

Job Ticket: 17296

DST#: 1

ATTN: Kevin Bailey

Test Start: 2012.05.23 @ 04:37:00

GENERAL INFORMATION:

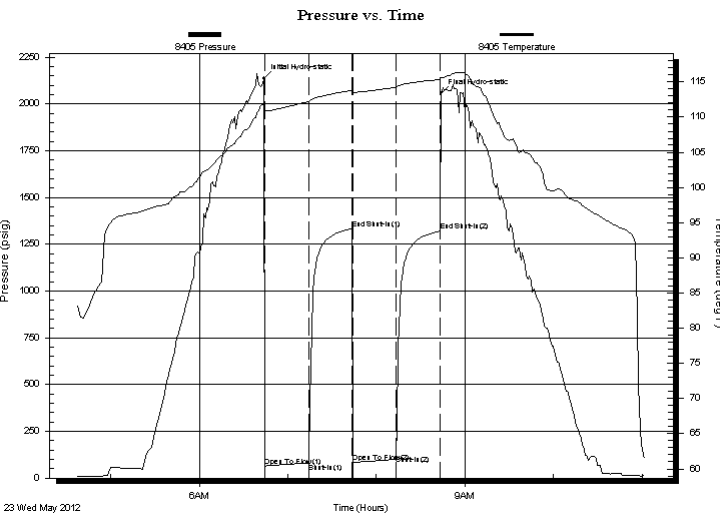
Formation: **KC H&I**
 Deviated: No Whipstock: ft (KB)
 Time Tool Opened: 06:46:00
 Time Test Ended: 11:04:00
 Interval: **4190.00 ft (KB) To 4263.00 ft (KB) (TVD)**
 Total Depth: 4263.00 ft (KB) (TVD)
 Hole Diameter: 7.88 inches Hole Condition: Fair
 Test Type: Conventional Bottom Hole (Initial)
 Tester: Dustin Ellis
 Unit No: 3315-Scott City-55
 Reference Elevations: 3051.00 ft (KB)
 3044.00 ft (CF)
 KB to GR/CF: 7.00 ft

Serial #: 8405

Outside

Press @ Run Depth: 1320.85 psig @ 4260.79 ft (KB) Capacity: 5000.00 psig
 Start Date: 2012.05.23 End Date: 2012.05.23 Last Calib.: 2012.05.23
 Start Time: 04:37:00 End Time: 11:02:23 Time On Btm: 2012.05.23 @ 06:43:53
 Time Off Btm: 2012.05.23 @ 08:43:53

TEST COMMENT: 1st Open 30 minutes Fair building blow built to 2 inches into 5 gallon bucket of w ater.
 1st Shut in 30 minutes No blow back.
 2nd Open 30 minutes Fair building blow built to 1/2 inch.
 2nd Shut in 30 minutes No blow back.



PRESSURE SUMMARY

Time (Min.)	Pressure (psig)	Temp (deg F)	Annotation
0	2135.62	111.60	Initial Hydro-static
1	64.45	111.02	Open To Flow (1)
30	81.66	112.20	Shut-In(1)
60	1332.90	113.79	End Shut-In(1)
60	83.66	113.53	Open To Flow (2)
90	122.21	114.26	Shut-In(2)
120	1320.85	115.36	End Shut-In(2)
120	2056.42	115.63	Final Hydro-static

Recovery

Length (ft)	Description	Volume (bbl)
71.00	Very slightly oil spotted mud	1.00
0.00	1%Oi 99%Mud	0.00

Gas Rates

Choke (inches)	Pressure (psig)	Gas Rate (Mcf/d)



DRILL STEM TEST REPORT

G.L. Allison Oil Operations Inc.

21-12s-32w-Logan

15 South East 30 Road Great Bend Kansas
67530

Younkin 21-B

Job Ticket: 17296

DST#: 1

ATTN: Kevin Bailey

Test Start: 2012.05.23 @ 04:37:00

GENERAL INFORMATION:

Formation: **KC H&I**

Deviated: No Whipstock: ft (KB)

Time Tool Opened: 06:46:00

Time Test Ended: 11:04:00

Test Type: Conventional Bottom Hole (Initial)

Tester: Dustin Ellis

Unit No: 3315-Scott City-55

Interval: 4190.00 ft (KB) To 4263.00 ft (KB) (TVD)

Reference Elevations: 3051.00 ft (KB)

Total Depth: 4263.00 ft (KB) (TVD)

3044.00 ft (CF)

Hole Diameter: 7.88 inches Hole Condition: Fair

KB to GR/CF: 7.00 ft

Serial #: 8400

Inside

Press @ Run Depth: 108.97 psig @ 4259.79 ft (KB)

Capacity: 5000.00 psig

Start Date: 2012.05.23

End Date: 2012.05.23

Last Calib.: 2012.05.23

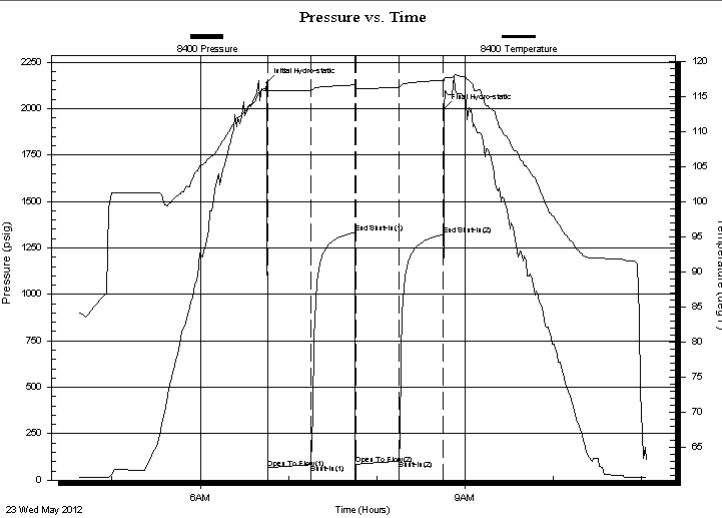
Start Time: 04:37:00

End Time: 11:04:00

Time On Btm: 2012.05.23 @ 06:45:30

Time Off Btm: 2012.05.23 @ 08:46:00

TEST COMMENT: 1st Open 30 minutes Fair building blow built to 2 inches into 5 gallon bucket of w ater.
1st Shut in 30 minutes No blow back.
2nd Open 30 minutes Fair building blow built to 1/2 inch.
2nd Shut in 30 minutes No blow back.



PRESSURE SUMMARY

Time (Min.)	Pressure (psig)	Temp (deg F)	Annotation
0	2137.51	116.30	Initial Hydro-static
1	66.12	115.73	Open To Flow (1)
30	84.40	115.82	Shut-In(1)
60	1332.62	116.65	End Shut-In(1)
60	85.52	116.15	Open To Flow (2)
90	108.97	116.32	Shut-In(2)
120	1320.79	117.33	End Shut-In(2)
121	1998.75	117.51	Final Hydro-static

Recovery

Length (ft)	Description	Volume (bbl)
71.00	Very slightly oil spotted mud	1.00
0.00	1%Oi 99%Mud	0.00

Gas Rates

	Choke (inches)	Pressure (psig)	Gas Rate (Mcf/d)



DRILL STEM TEST REPORT

Prepared For: **G.L. Allison Oil Operations Inc.**

15 South East 30 Road Great Bend Kansas
67530

ATTN: Kevin Bailey

Younkin 21-B

21-12s-32w-Logan

Start Date: 2012.05.23 @ 04:37:00

End Date: 2012.05.23 @ 11:04:00

Job Ticket #: 17296 DST #: 1

Superior Testers Enterprises LLC
PO Box 138 Great Bend KS 67530
1-800-792-6902

Printed: 2012.05.23 @ 21:22:15