

**TRILOBITE
TESTING, INC.**

DRILL STEM TEST REPORT

Blue Ridge Petroleum Corp.
P.O. Box 1913 Enid Ok. 73702+1913
ATTN: Josh Austin

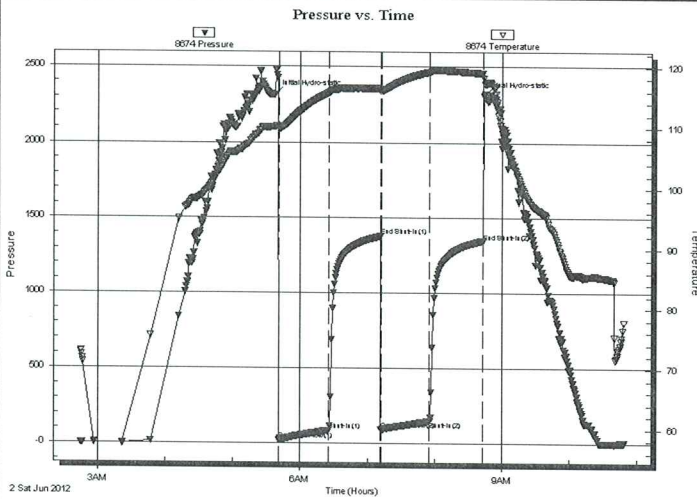
19/27/24
Roesener #1-19
Job Ticket: 47631 **DST#: 1**
Test Start: 2012.06.02 @ 02:45:00

GENERAL INFORMATION:

Formation: **Pawnee**
Deviated: No Whipstock: ft (KB)
Time Tool Opened: 05:41:00
Time Test Ended: 10:48:39
Interval: **4892.00 ft (KB) To 4910.00 ft (KB) (TVD)**
Total Depth: 4910.00 ft (KB) (TVD)
Hole Diameter: 7.88 inches Hole Condition: Fair
Test Type: Conventional Bottom Hole (Initial)
Tester: Harley Davidson
Unit No: 58
Reference Elevations: 2553.00 ft (KB)
2541.00 ft (CF)
KB to GR/CF: 12.00 ft

Serial #: 8674 Outside
Press@RunDepth: 147.27 psig @ 4893.00 ft (KB) Capacity: 8000.00 psig
Start Date: 2012.06.02 End Date: 2012.06.02 Last Calib.: 2012.06.02
Start Time: 02:45:05 End Time: 10:48:40 Time On Btm: 2012.06.02 @ 05:37:40
Time Off Btm: 2012.06.02 @ 08:43:30

TEST COMMENT: IF- Weak building blow 6" into bucket.
IS- No blow back.
FF- Weak building blow 6" into bucket.
FSI- No blow back.



PRESSURE SUMMARY

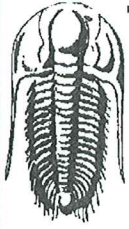
Time (Min.)	Pressure (psig)	Temp (deg F)	Annotation
0	2311.21	110.18	Initial Hydro-static
4	21.27	109.77	Open To Flow (1)
48	85.90	115.78	Shut-In(1)
94	1377.68	116.46	End Shut-In(1)
95	91.07	116.08	Open To Flow (2)
138	147.27	119.14	Shut-In(2)
185	1344.67	118.99	End Shut-In(2)
186	2304.73	118.21	Final Hydro-static

Recovery

Length (ft)	Description	Volume (bbl)
280.00	100% water trace of mud and oil	3.93

Gas Rates

	Choke (inches)	Pressure (psig)	Gas Rate (Mcf/d)



**TRILOBITE
TESTING, INC.**

DRILL STEM TEST REPORT

FLUID SUMMARY

Blue Ridge Petroleum Corp.

19/27/24

P.O. Box 1913 Enid Ok. 73702+1913

Roesener #1-19

Job Ticket: 47631

DST#: 1

ATTN: Josh Austin

Test Start: 2012.06.02 @ 02:45:00

Mud and Cushion Information

Mud Type: Gel Chem

Cushion Type:

Oil API:

deg API

Mud Weight: 9.00 lb/gal

Cushion Length:

ft

Water Salinity:

ppm

Viscosity: 53.00 sec/qt

Cushion Volume:

bbl

Water Loss: 8.76 in³

Gas Cushion Type:

Resistivity: ohm.m

Gas Cushion Pressure:

psig

Salinity: 5000.00 ppm

Filter Cake: inches

Recovery Information

Recovery Table

Length ft	Description	Volume bbl
280.00	100% w ater trace of mud and oil	3.928

Total Length: 280.00 ft Total Volume: 3.928 bbl

Num Fluid Samples: 0

Num Gas Bombs: 0

Serial #:

Laboratory Name:

Laboratory Location:

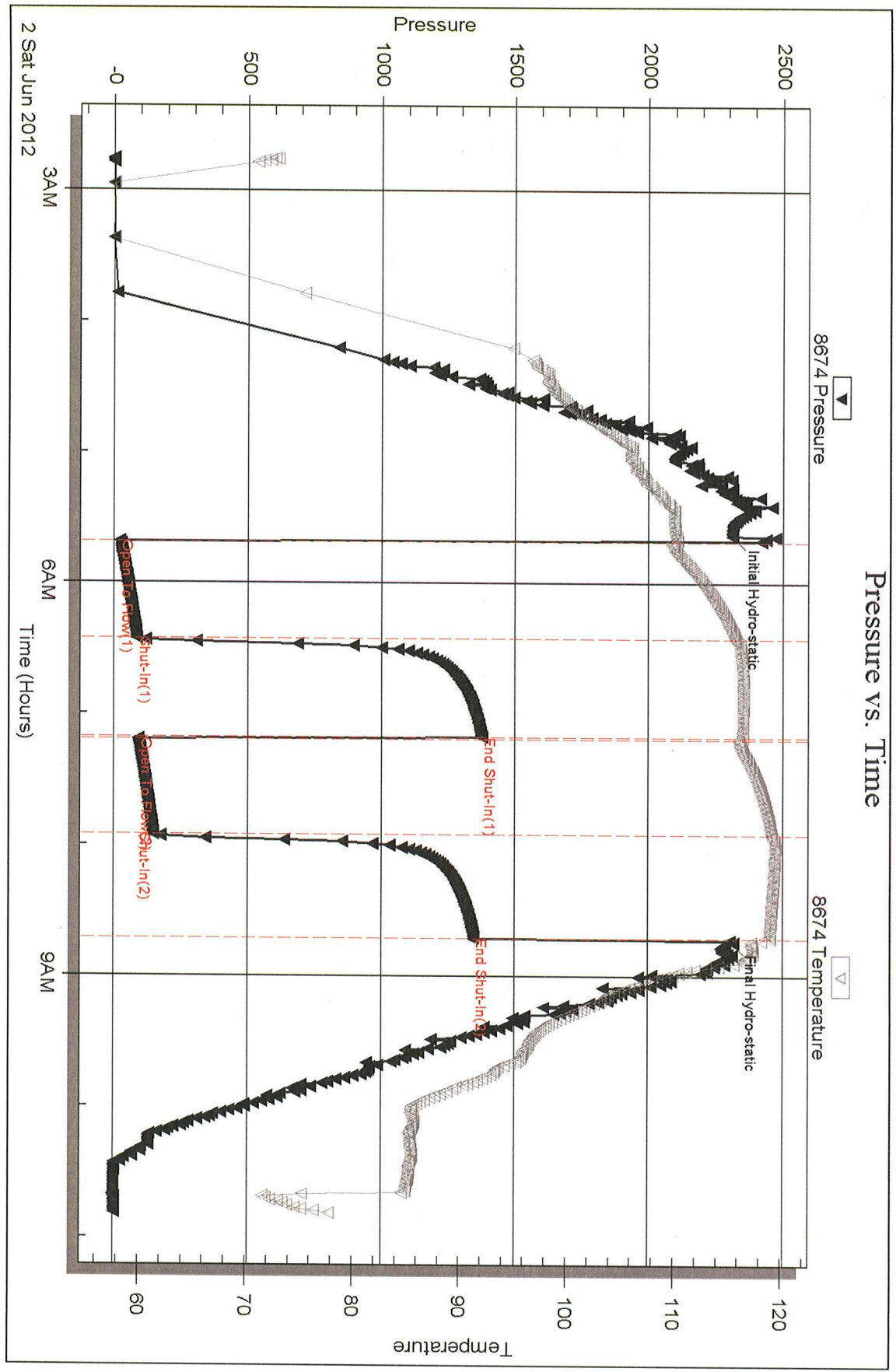
Recovery Comments: Water CHL. .25@75= 25000

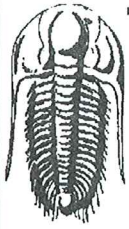
Serial #: 8674

Outside Blue Ridge Petroleum Corp.

Rossener #1-19

DST Test Number: 1





**TRILOBITE
TESTING, INC.**

DRILL STEM TEST REPORT

Blue Ridge Petroleum Corp.
P.O. Box 1913 Enid Ok. 73702+1913
ATTN: Josh Austin

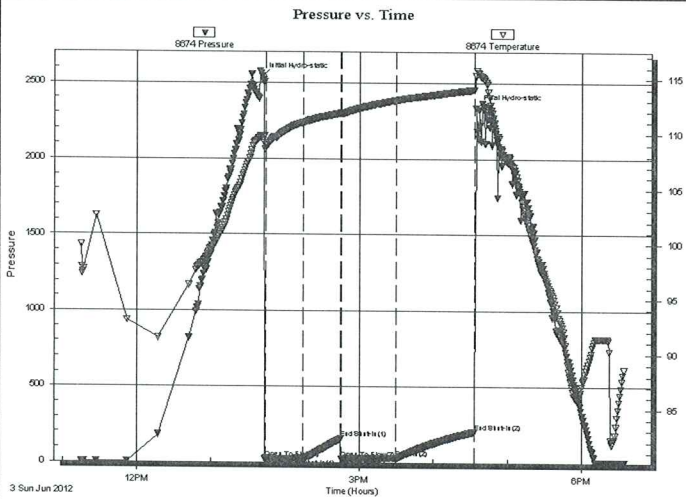
19/27/24
Roesener #1-19
Job Ticket: 47632 DST#: 2
Test Start: 2012.06.03 @ 11:15:00

GENERAL INFORMATION:

Formation: **Morrow/Miss**
Deviated: No Whipstock: ft (KB)
Time Tool Opened: 13:43:40
Time Test Ended: 18:34:50
Interval: **5036.00 ft (KB) To 5110.00 ft (KB) (TVD)**
Total Depth: 5110.00 ft (KB) (TVD)
Hole Diameter: 7.88 inches Hole Condition: Fair
Test Type: Conventional Bottom Hole (Initial)
Tester: Harley Davidson
Unit No: 58
Reference Elevations: 2553.00 ft (KB)
2541.00 ft (CF)
KB to GR/CF: 12.00 ft

Serial #: 8674 Outside
Press@RunDepth: 29.03 psig @ 5037.00 ft (KB) Capacity: 8000.00 psig
Start Date: 2012.06.03 End Date: 2012.06.03 Last Calib.: 2012.06.03
Start Time: 11:15:05 End Time: 18:34:50 Time On Btm: 2012.06.03 @ 13:41:00
Time Off Btm: 2012.06.03 @ 16:34:20

TEST COMMENT: IF- Good building blow 10" into bucket.
IS- No blow back.
FF- Good building blow BOB 14min.
FSI- No blow back.



PRESSURE SUMMARY

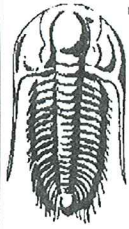
Time (Min.)	Pressure (psig)	Temp (deg F)	Annotation
0	2538.13	109.70	Initial Hydro-static
3	24.11	109.02	Open To Flow (1)
34	26.11	111.00	Shut-In(1)
64	156.64	111.87	End Shut-In(1)
65	22.47	111.81	Open To Flow (2)
109	29.03	113.05	Shut-In(2)
173	202.90	114.04	End Shut-In(2)
174	2333.85	115.31	Final Hydro-static

Recovery

Length (ft)	Description	Volume (bbl)
0.00	310 GIP	0.00
50.00	5%oil 5%gas 90%mud	0.70

Gas Rates

	Choke (inches)	Pressure (psig)	Gas Rate (Mcf/d)



**TRILOBITE
TESTING, INC.**

DRILL STEM TEST REPORT

FLUID SUMMARY

Blue Ridge Petroleum Corp.

19/27/24

P.O. Box 1913 Enid Ok. 73702+1913

Roesener #1-19

Job Ticket: 47632

DST#: 2

ATTN: Josh Austin

Test Start: 2012.06.03 @ 11:15:00

Mud and Cushion Information

Mud Type: Gel Chem

Cushion Type:

Oil API:

deg API

Mud Weight: 9.00 lb/gal

Cushion Length:

ft

Water Salinity:

ppm

Viscosity: 50.00 sec/qt

Cushion Volume:

bbl

Water Loss: 8.37 in³

Gas Cushion Type:

Resistivity: ohm.m

Gas Cushion Pressure:

psig

Salinity: 6000.00 ppm

Filter Cake: inches

Recovery Information

Recovery Table

Length ft	Description	Volume bbl
0.00	310 GIP	0.000
50.00	5%oil 5%gas 90%mud	0.701

Total Length: 50.00 ft Total Volume: 0.701 bbl

Num Fluid Samples: 0

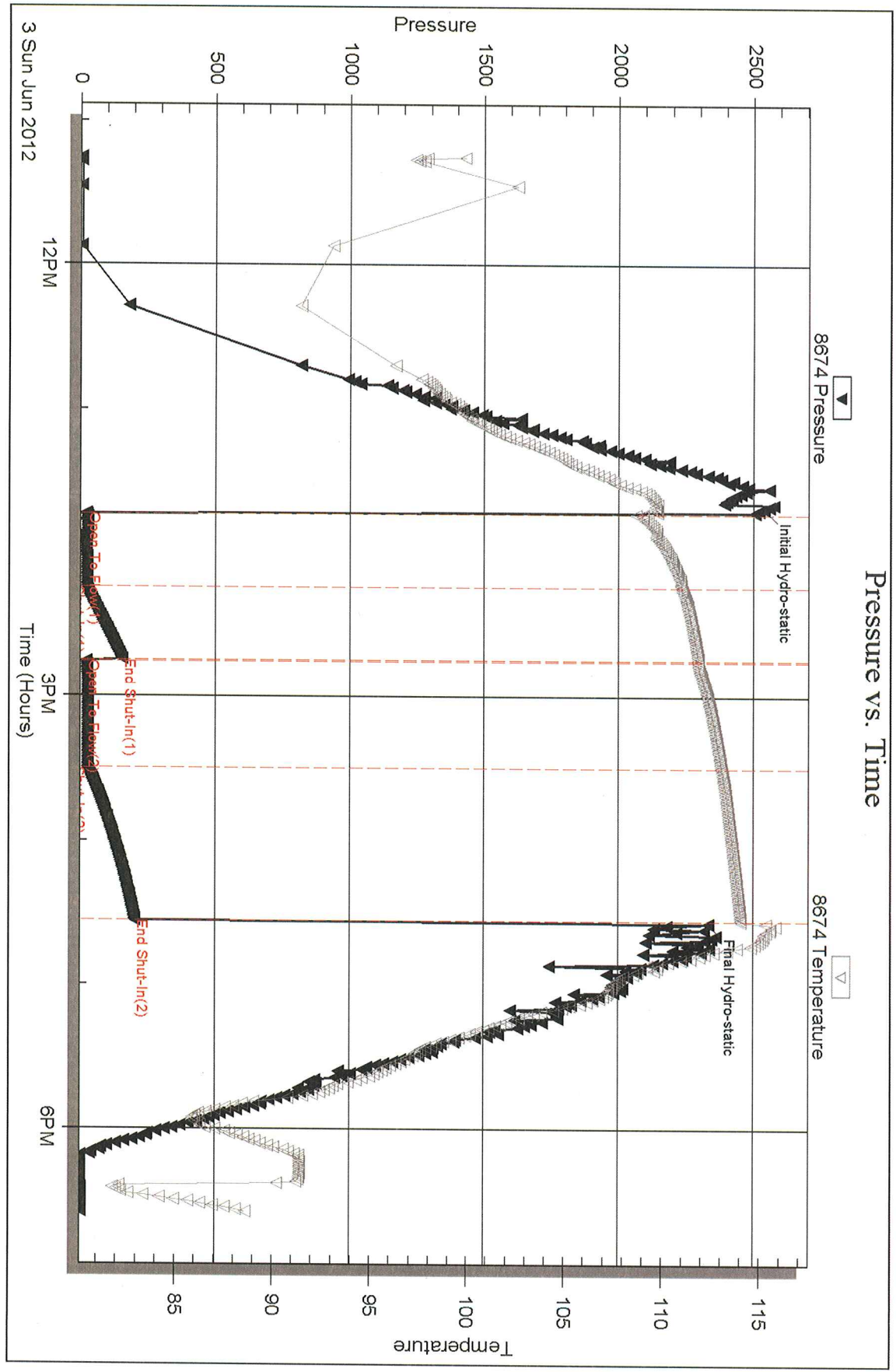
Num Gas Bombs: 0

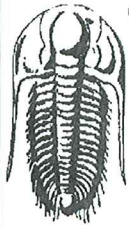
Serial #:

Laboratory Name:

Laboratory Location:

Recovery Comments:





**TRILOBITE
TESTING, INC.**

DRILL STEM TEST REPORT

Blue Ridge Petroleum Corp.
P.O. Box 1913 Enid Ok. 73702+1913
ATTN: Josh Austin

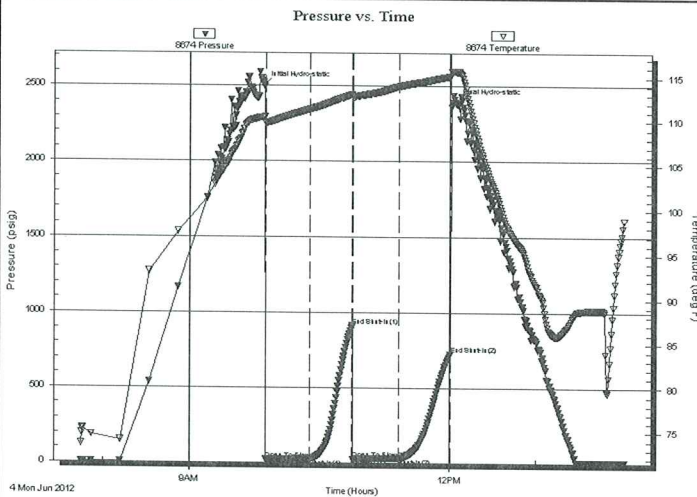
19/27/24
Roesener #1-19
Job Ticket: 47633 **DST#: 3**
Test Start: 2012.06.04 @ 07:45:00

GENERAL INFORMATION:

Formation: **Miss/St. Louis**
Deviated: No Whipstock: ft (KB)
Time Tool Opened: 09:52:50
Time Test Ended: 14:01:30
Interval: **5110.00 ft (KB) To 5150.00 ft (KB) (TVD)**
Total Depth: 5150.00 ft (KB) (TVD)
Hole Diameter: 7.88 inches Hole Condition: Fair
Test Type: Conventional Bottom Hole (Initial)
Tester: Harley Davidson
Unit No: 58
Reference Elevations: 2553.00 ft (KB)
2541.00 ft (CF)
KB to GR/CF: 12.00 ft

Serial #: 8674 Outside
Press@RunDepth: 31.39 psig @ 5111.00 ft (KB) Capacity: 8000.00 psig
Start Date: 2012.06.04 End Date: 2012.06.04 Last Calib.: 2012.06.04
Start Time: 07:45:05 End Time: 14:01:29 Time On Btm: 2012.06.04 @ 09:51:30
Time Off Btm: 2012.06.04 @ 12:04:09

TEST COMMENT: IF- Weak surface blow.
IS- No blow back.
FF- No blow.
FSI- No blow back.



PRESSURE SUMMARY

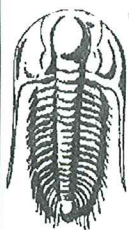
Time (Min.)	Pressure (psig)	Temp (deg F)	Annotation
0	2505.69	110.51	Initial Hydro-static
2	21.49	109.81	Open To Flow (1)
32	27.28	111.40	Shut-In(1)
62	908.88	113.05	End Shut-In(1)
62	26.20	112.75	Open To Flow (2)
94	31.39	114.00	Shut-In(2)
130	722.36	115.14	End Shut-In(2)
133	2391.20	115.69	Final Hydro-static

Recovery

Length (ft)	Description	Volume (bbl)
30.00	5% w ater 95% mud trace oil and gas	0.42

Gas Rates

Choke (inches)	Pressure (psig)	Gas Rate (Mcf/d)



**TRILOBITE
TESTING, INC.**

DRILL STEM TEST REPORT

FLUID SUMMARY

Blue Ridge Petroleum Corp.

19/27/24

P.O. Box 1913 Enid Ok. 73702+1913

Roesener #1-19

Job Ticket: 47633

DST#: 3

ATTN: Josh Austin

Test Start: 2012.06.04 @ 07:45:00

Mud and Cushion Information

Mud Type: Gel Chem

Cushion Type:

Oil API:

deg API

Mud Weight: 9.00 lb/gal

Cushion Length:

ft

Water Salinity:

ppm

Viscosity: 50.00 sec/qt

Cushion Volume:

bbl

Water Loss: 8.37 in³

Gas Cushion Type:

Resistivity: ohm.m

Gas Cushion Pressure:

psig

Salinity: 6000.00 ppm

Filter Cake: inches

Recovery Information

Recovery Table

Length ft	Description	Volume bbl
30.00	5% w ater 95% mud trace oil and gas	0.421

Total Length: 30.00 ft Total Volume: 0.421 bbl

Num Fluid Samples: 0

Num Gas Bombs: 0

Serial #:

Laboratory Name:

Laboratory Location:

Recovery Comments:

