



TRILOBITE TESTING, INC.

DRILL STEM TEST REPORT

O'Brien Resources
 PO Box 6149
 Shreveport LA 71136
 ATTN: Kurt Talbott

19-16s-29w Lane, KS
Skunkhollow 19 #1
 Job Ticket: 47199 **DST#: 1**
 Test Start: 2012.06.20 @ 07:46:00

GENERAL INFORMATION:

Formation: **Toronto Lansing A**
 Deviated: No Whipstock: ft (KB)
 Time Tool Opened: 10:32:45
 Time Test Ended: 14:07:45
 Interval: **3842.00 ft (KB) To 3910.00 ft (KB) (TVD)**
 Total Depth: 3910.00 ft (KB) (TVD)
 Hole Diameter: 7.88 inches Hole Condition: Fair
 Test Type: Conventional Bottom Hole (Reset)
 Tester: Cody Bloedorn
 Unit No: 54
 Reference Elevations: 2787.00 ft (KB)
 2776.00 ft (CF)
 KB to GR/CF: 11.00 ft

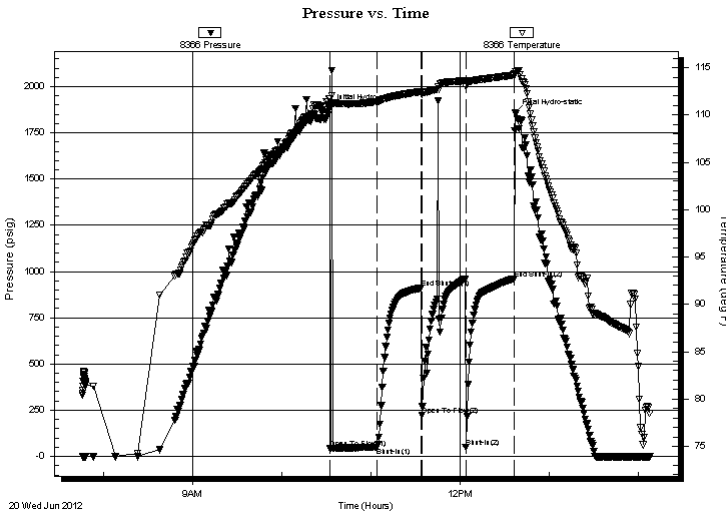
Serial #: 8366

Inside

Press @ Run Depth: 50.83 psig @ 3907.00 ft (KB) Capacity: 8000.00 psig
 Start Date: 2012.06.20 End Date: 2012.06.20 Last Calib.: 2012.06.20
 Start Time: 07:46:02 End Time: 14:07:45 Time On Btm: 2012.06.20 @ 10:32:30
 Time Off Btm: 2012.06.20 @ 12:37:15

TEST COMMENT: 30 - IF- Surface blow, died in 26 Min.
 30 - IS- No blow back
 30 - FF- No blow back, flushed after 10 Min., surged and died
 30 - FS- No blow back

PRESSURE SUMMARY



| Time (Min.) | Pressure (psig) | Temp (deg F) | Annotation |
|-------------|-----------------|--------------|----------------------|
| 0 | 1881.24 | 111.75 | Initial Hydro-static |
| 1 | 42.17 | 110.78 | Open To Flow (1) |
| 32 | 48.68 | 111.41 | Shut-In(1) |
| 62 | 912.06 | 112.48 | End Shut-In(1) |
| 62 | 223.55 | 112.13 | Open To Flow (2) |
| 92 | 50.83 | 112.97 | Shut-In(2) |
| 124 | 961.07 | 114.21 | End Shut-In(2) |
| 125 | 1856.36 | 114.35 | Final Hydro-static |

Recovery

| Length (ft) | Description | Volume (bbl) |
|-------------|----------------------|--------------|
| 15.00 | Mud, Oil scum, 100%M | 0.21 |
| | | |
| | | |
| | | |
| | | |

* Recovery from multiple tests

Gas Rates

| Choke (inches) | Pressure (psig) | Gas Rate (Mcf/d) |
|----------------|-----------------|------------------|
| | | |



**TRILOBITE
TESTING, INC.**

DRILL STEM TEST REPORT

FLUID SUMMARY

O'Brien Resources

19-16s-29w Lane, KS

PO Box 6149
Shreveport LA 71136

Skunkhollow 19 #1

Job Ticket: 47199

DST#: 1

ATTN: Kurt Talbott

Test Start: 2012.06.20 @ 07:46:00

Mud and Cushion Information

Mud Type: Gel Chem

Cushion Type:

Oil API:

deg API

Mud Weight: 9.00 lb/gal

Cushion Length:

ft

Water Salinity:

ppm

Viscosity: 39.00 sec/qt

Cushion Volume:

bbbl

Water Loss: 9.59 in³

Gas Cushion Type:

Resistivity: ohm.m

Gas Cushion Pressure:

psig

Salinity: 800.00 ppm

Filter Cake: inches

Recovery Information

Recovery Table

| Length ft | Description | Volume bbl |
|--------------|----------------------|---------------|
| 15.00 | Mud, Oil scum, 100%M | 0.210 |

Total Length: 15.00 ft Total Volume: 0.210 bbl

Num Fluid Samples: 0

Num Gas Bombs: 0

Serial #:

Laboratory Name:

Laboratory Location:

Recovery Comments:



TRILOBITE TESTING, INC.

DRILL STEM TEST REPORT

O'Brien Resources
 Po Box 6149
 Shreveport LA 71136
 ATTN: Kurt

19-16s-29w Lane KS
Skunkhallow 19 #1
 Job Ticket: 47200 **DST#: 2**
 Test Start: 2012.06.21 @ 11:27:00

GENERAL INFORMATION:

Formation:

Deviated: No Whipstock: ft (KB)
 Time Tool Opened: 13:22:30
 Time Test Ended: 17:01:30

Test Type: Conventional Bottom Hole (Reset)
 Tester: Cody Bloedorn
 Unit No: 54

Interval: 4043.00 ft (KB) To 4130.00 ft (KB) (TVD)
 Total Depth: 4130.00 ft (KB) (TVD)
 Hole Diameter: 7.88 inches Hole Condition: Fair

Reference Elevations: 2787.00 ft (KB)
 2776.00 ft (CF)
 KB to GR/CF: 11.00 ft

Serial #: 8366

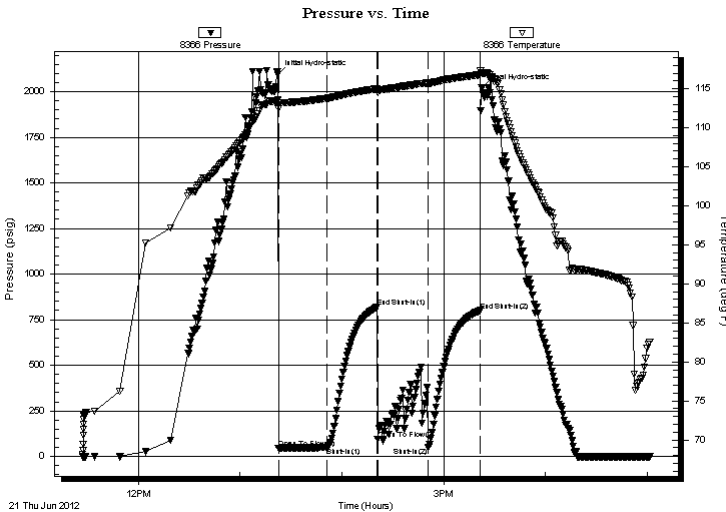
Inside

Press @ Run Depth: 49.63 psig @ 4109.00 ft (KB)
 Start Date: 2012.06.21 End Date: 2012.06.21
 Start Time: 11:27:02 End Time: 17:01:30

Capacity: 8000.00 psig
 Last Calib.: 2012.06.21
 Time On Btm: 2012.06.21 @ 13:22:15
 Time Off Btm: 2012.06.21 @ 15:22:30

TEST COMMENT: 30 - IF- 1/4" blow , died back to Surface blow
 30 - IS- No blow back.
 30 - FF- No blow back
 30 - FS- No blow

PRESSURE SUMMARY



| Time (Min.) | Pressure (psig) | Temp (deg F) | Annotation |
|-------------|-----------------|--------------|----------------------|
| 0 | 2094.18 | 113.62 | Initial Hydro-static |
| 1 | 44.85 | 112.41 | Open To Flow (1) |
| 29 | 48.27 | 113.76 | Shut-In(1) |
| 59 | 818.40 | 115.00 | End Shut-In(1) |
| 59 | 93.21 | 114.50 | Open To Flow (2) |
| 89 | 49.63 | 115.56 | Shut-In(2) |
| 120 | 800.09 | 116.79 | End Shut-In(2) |
| 121 | 2019.49 | 116.98 | Final Hydro-static |

Recovery

| Length (ft) | Description | Volume (bbl) |
|-------------|-----------------------|--------------|
| 15.00 | Mud - Oil Scum, 100%M | 0.21 |
| | | |
| | | |
| | | |
| | | |

* Recovery from multiple tests

Gas Rates

| Choke (inches) | Pressure (psig) | Gas Rate (Mcf/d) |
|----------------|-----------------|------------------|
| | | |



**TRILOBITE
TESTING, INC.**

DRILL STEM TEST REPORT

FLUID SUMMARY

O'Brien Resources

19-16s-29w Lane KS

Po Box 6149
Shreveport LA 71136

Skunkhallow 19 #1

Job Ticket: 47200

DST#: 2

ATTN: Kurt

Test Start: 2012.06.21 @ 11:27:00

Mud and Cushion Information

Mud Type: Gel Chem

Cushion Type:

Oil API:

deg API

Mud Weight: 9.00 lb/gal

Cushion Length:

ft

Water Salinity:

ppm

Viscosity: 51.00 sec/qt

Cushion Volume:

bbbl

Water Loss: 9.19 in³

Gas Cushion Type:

Resistivity: ohm.m

Gas Cushion Pressure:

psig

Salinity: 1800.00 ppm

Filter Cake: inches

Recovery Information

Recovery Table

| Length ft | Description | Volume bbl |
|--------------|-----------------------|---------------|
| 15.00 | Mud - Oil Scum, 100%M | 0.210 |

Total Length: 15.00 ft Total Volume: 0.210 bbl

Num Fluid Samples: 0

Num Gas Bombs: 0

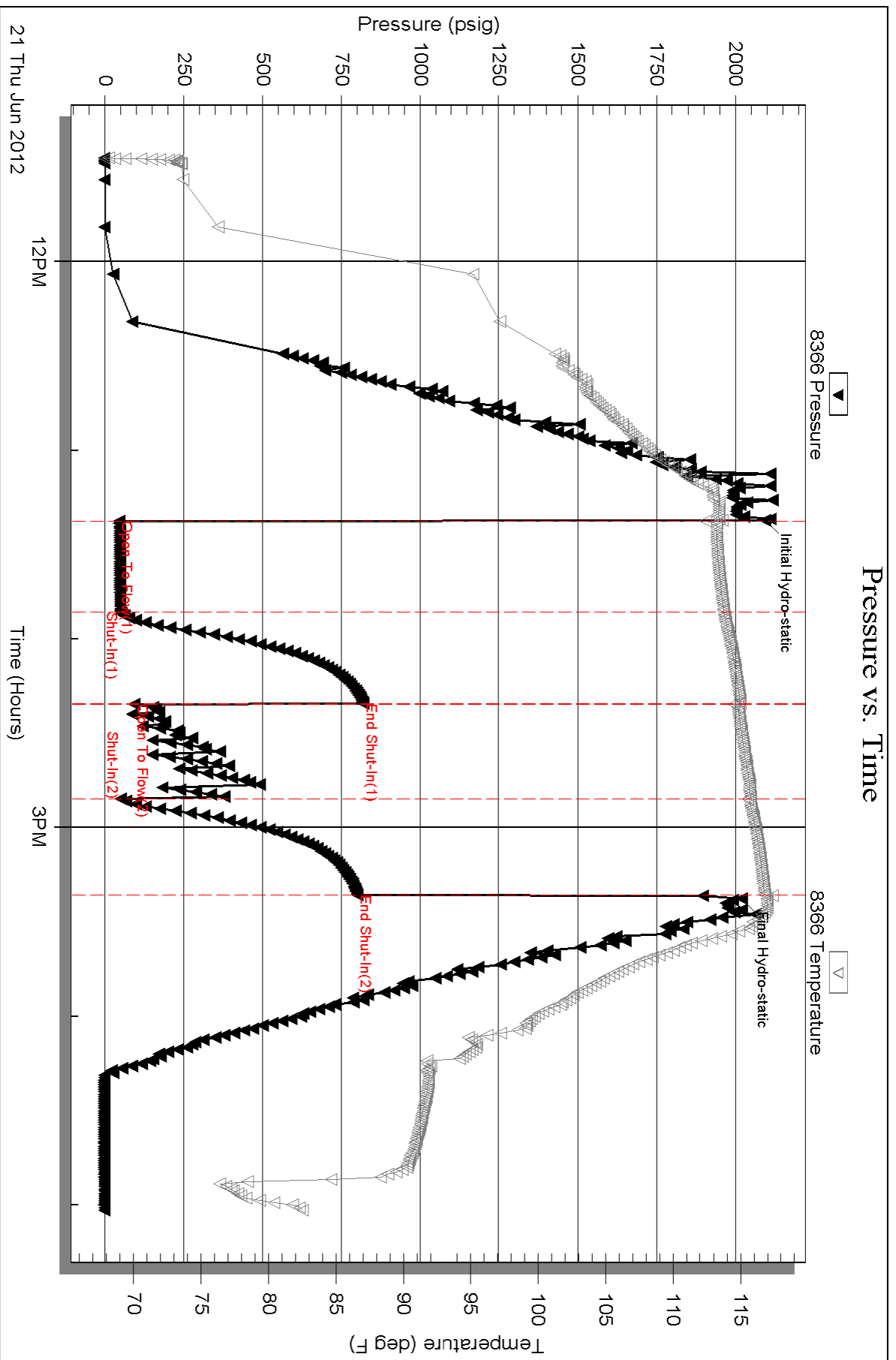
Serial #:

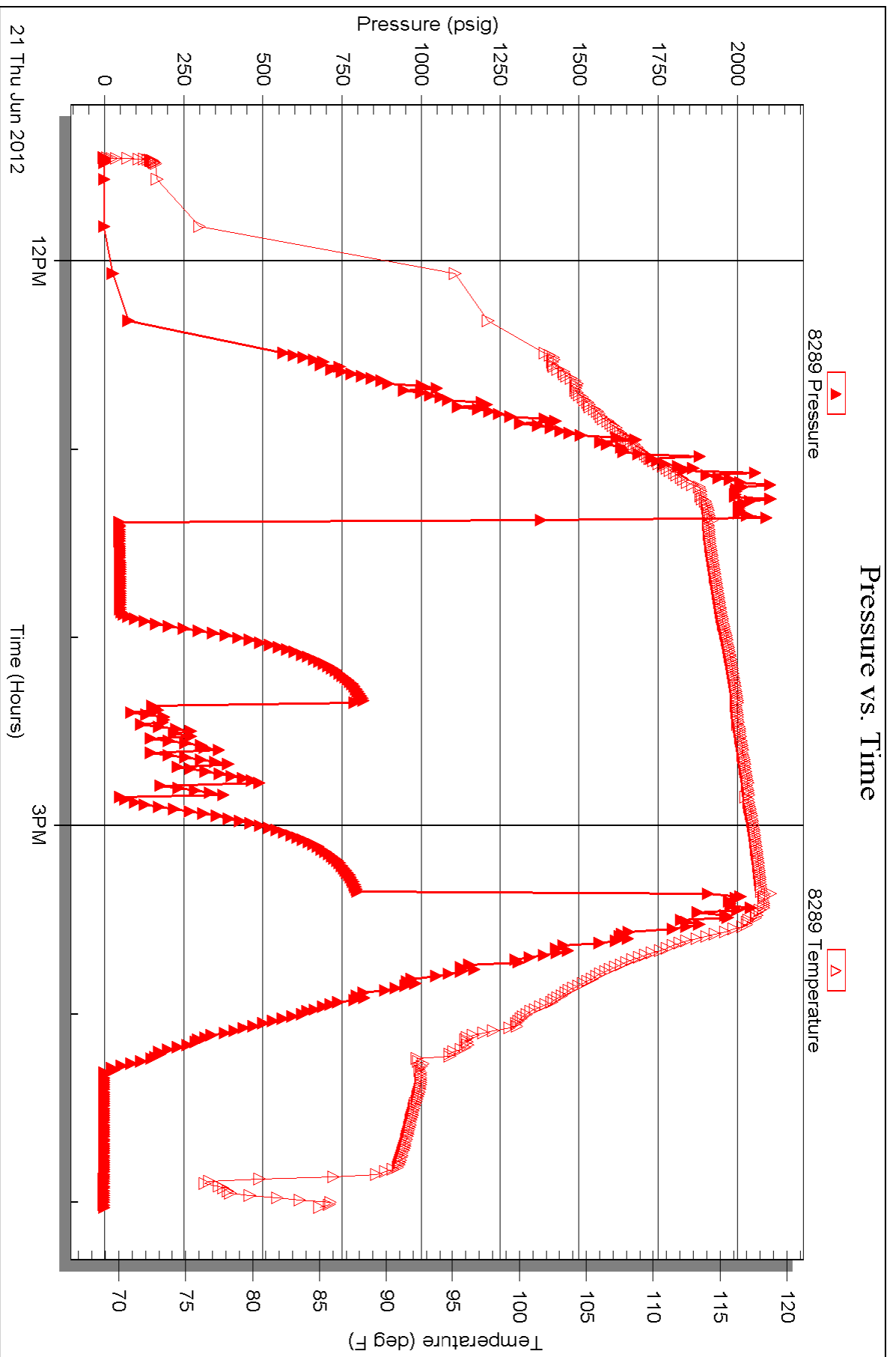
Laboratory Name:

Laboratory Location:

Recovery Comments:

Pressure vs. Time







TRILOBITE TESTING, INC

DRILL STEM TEST REPORT

O'Brien Resources
 Po Box 6149
 Shreveport LA 71136
 ATTN: Kurt Talbott

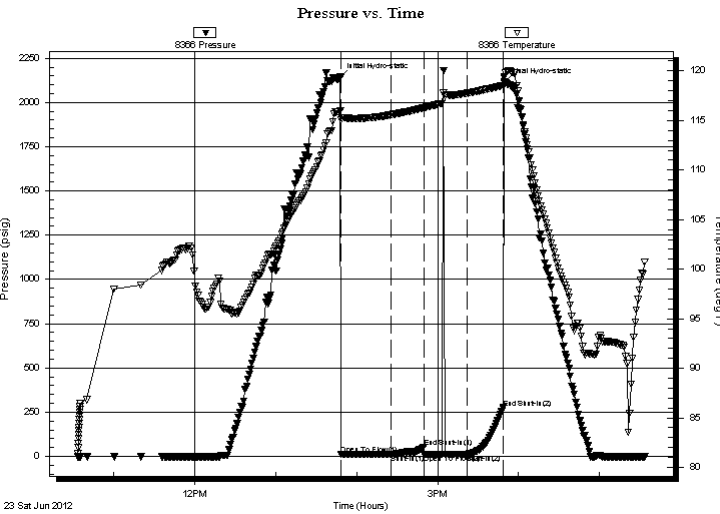
19-16s-29w Lane KS
Skunkhallow 19 #1
 Job Ticket: 47816 **DST#: 4**
 Test Start: 2012.06.23 @ 10:33:05

GENERAL INFORMATION:

Formation: **Myric Station**
 Deviated: No Whipstock: 0.00 ft (KB)
 Time Tool Opened: 13:48:20
 Time Test Ended: 17:33:20
 Interval: **4350.00 ft (KB) To 4385.00 ft (KB) (TVD)**
 Total Depth: 4385.00 ft (KB) (TVD)
 Hole Diameter: 7.88 inches Hole Condition: Good
 Test Type: Conventional Bottom Hole (Reset)
 Tester: Jason McLemore
 Unit No: 54
 Reference Elevations: 2787.00 ft (KB)
 2776.00 ft (CF)
 KB to GR/CF: 11.00 ft

Serial #: 8366 Inside
 Press @ Run Depth: 13.00 psig @ 4352.00 ft (KB) Capacity: 8000.00 psig
 Start Date: 2012.06.23 End Date: 2012.06.23 Last Calib.: 2012.06.23
 Start Time: 10:33:07 End Time: 17:33:20 Time On Btm: 2012.06.23 @ 13:47:50
 Time Off Btm: 2012.06.23 @ 15:49:05

TEST COMMENT: IFP-Surge Upon Open, Dead
 ISI-Dead
 FFP-Dead, Flush Tool, Dead
 FSI-Dead



PRESSURE SUMMARY

| Time (Min.) | Pressure (psig) | Temp (deg F) | Annotation |
|-------------|-----------------|--------------|----------------------|
| 0 | 2140.05 | 116.01 | Initial Hydro-static |
| 1 | 10.85 | 115.02 | Open To Flow (1) |
| 38 | 12.34 | 115.58 | Shut-In(1) |
| 62 | 52.31 | 116.29 | End Shut-In(1) |
| 62 | 11.94 | 116.28 | Open To Flow (2) |
| 94 | 13.00 | 117.75 | Shut-In(2) |
| 121 | 274.61 | 118.56 | End Shut-In(2) |
| 122 | 2112.28 | 119.30 | Final Hydro-static |

Recovery

| Length (ft) | Description | Volume (bbl) |
|-------------|------------------|--------------|
| 1.00 | Mud W/Oil Specks | 0.01 |
| | | |
| | | |
| | | |
| | | |

* Recovery from multiple tests

Gas Rates

| Choke (inches) | Pressure (psig) | Gas Rate (Mcf/d) |
|----------------|-----------------|------------------|
| | | |



TRILOBITE TESTING, INC

DRILL STEM TEST REPORT

O'Brien Resources
Po Box 6149
Shreveport LA 71136
ATTN: Kurt Talbott

19-16s-29w Lane KS
Skunkhallow 19 #1
Job Ticket: 47817 **DST#: 5**
Test Start: 2012.06.24 @ 14:36:11

GENERAL INFORMATION:

Formation: **Ft Scott-Cherokee-Jo**
 Deviated: No Whipstock: 0.00 ft (KB)
 Time Tool Opened: 16:52:11
 Time Test Ended: 20:40:26
 Interval: **4405.00 ft (KB) To 4477.00 ft (KB) (TVD)**
 Total Depth: 4477.00 ft (KB) (TVD)
 Hole Diameter: 7.88 inches Hole Condition: Good

Test Type: Conventional Bottom Hole (Reset)
 Tester: Jason McLemore
 Unit No: 54
 Reference Elevations: 2787.00 ft (KB)
 2776.00 ft (CF)
 KB to GR/CF: 11.00 ft

Serial #: 8366

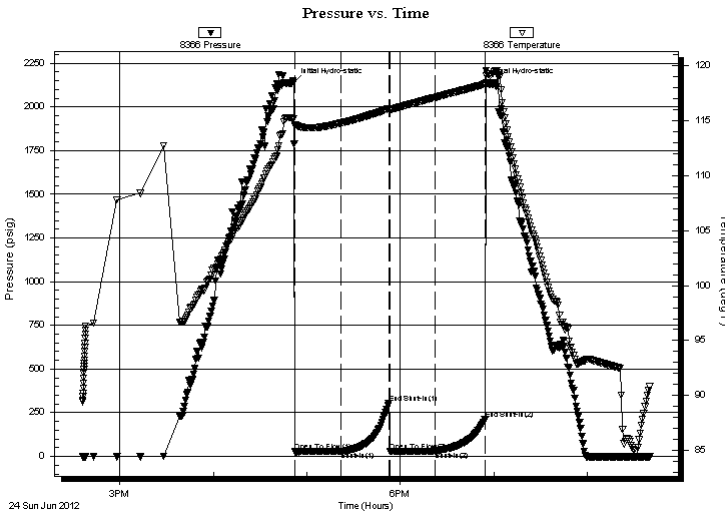
Inside

Press @ Run Depth: 30.97 psig @ 4471.00 ft (KB)
 Start Date: 2012.06.24 End Date: 2012.06.24
 Start Time: 14:36:13 End Time: 20:40:26

Capacity: 8000.00 psig
 Last Calib.: 2012.06.24
 Time On Btm: 2012.06.24 @ 16:51:41
 Time Off Btm: 2012.06.24 @ 18:55:11

TEST COMMENT: IFP-Weak Surface Blow , Died in 5 Min.
 ISI-Dead
 FFP-Dead
 FSI-Dead

PRESSURE SUMMARY



| Time (Min.) | Pressure (psig) | Temp (deg F) | Annotation |
|-------------|-----------------|--------------|----------------------|
| 0 | 2140.25 | 115.20 | Initial Hydro-static |
| 1 | 26.69 | 114.48 | Open To Flow (1) |
| 30 | 29.35 | 114.76 | Shut-In(1) |
| 61 | 304.56 | 116.07 | End Shut-In(1) |
| 62 | 27.80 | 115.99 | Open To Flow (2) |
| 91 | 30.97 | 117.09 | Shut-In(2) |
| 123 | 210.53 | 118.32 | End Shut-In(2) |
| 124 | 2136.84 | 119.09 | Final Hydro-static |

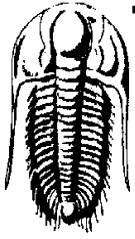
Recovery

| Length (ft) | Description | Volume (bbl) |
|-------------|--------------|--------------|
| 1.00 | Free Oil | 0.01 |
| 4.00 | Drilling Mud | 0.06 |
| | | |
| | | |
| | | |

* Recovery from multiple tests

Gas Rates

| Choke (inches) | Pressure (psig) | Gas Rate (Mcf/d) |
|----------------|-----------------|------------------|
| | | |



TRILOBITE TESTING, INC

DRILL STEM TEST REPORT

O'Brien Resources
 Po Box 6149
 Shreveport LA 71136
 ATTN: Kurt Talbott

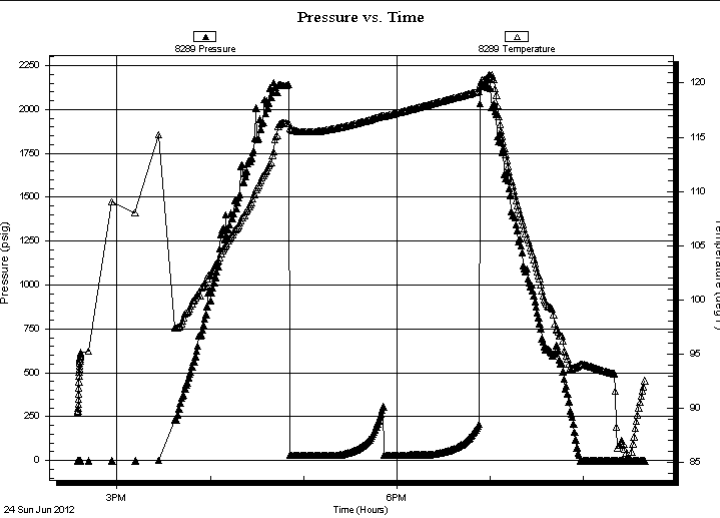
19-16s-29w Lane KS
Skunkhallow 19 #1
 Job Ticket: 47817 **DST#: 5**
 Test Start: 2012.06.24 @ 14:36:11

GENERAL INFORMATION:

Formation: **Ft Scott-Cherokee-Jo**
 Deviated: No Whipstock: 0.00 ft (KB)
 Time Tool Opened: 16:52:11
 Time Test Ended: 20:40:26
 Interval: **4405.00 ft (KB) To 4477.00 ft (KB) (TVD)**
 Total Depth: 4477.00 ft (KB) (TVD)
 Hole Diameter: 7.88 inches Hole Condition: Good
 Test Type: Conventional Bottom Hole (Reset)
 Tester: Jason McLemore
 Unit No: 54
 Reference Elevations: 2787.00 ft (KB)
 2776.00 ft (CF)
 KB to GR/CF: 11.00 ft

Serial #: 8289 Outside
 Press @ Run Depth: psig @ 4471.00 ft (KB) Capacity: 8000.00 psig
 Start Date: 2012.06.24 End Date: 2012.06.24 Last Calib.: 2012.06.24
 Start Time: 14:34:41 End Time: 20:39:09 Time On Btm:
 Time Off Btm:

TEST COMMENT: IFP-Weak Surface Blow, Died in 5 Min.
 ISI-Dead
 FFP-Dead
 FSI-Dead



| PRESSURE SUMMARY | | | |
|------------------|-----------------|--------------|------------|
| Time (Min.) | Pressure (psig) | Temp (deg F) | Annotation |
| | | | |
| | | | |
| | | | |
| | | | |
| | | | |
| | | | |
| | | | |
| | | | |
| | | | |
| | | | |
| | | | |

| Recovery | | |
|-------------|--------------|--------------|
| Length (ft) | Description | Volume (bbl) |
| 1.00 | Free Oil | 0.01 |
| 4.00 | Drilling Mud | 0.06 |
| | | |
| | | |
| | | |
| | | |

* Recovery from multiple tests

| Gas Rates | | | |
|-----------|----------------|-----------------|------------------|
| | Choke (inches) | Pressure (psig) | Gas Rate (Mcf/d) |
| | | | |
| | | | |
| | | | |
| | | | |
| | | | |
| | | | |
| | | | |
| | | | |
| | | | |
| | | | |



**TRILOBITE
TESTING, INC**

DRILL STEM TEST REPORT

FLUID SUMMARY

O'Brien Resources

19-16s-29w Lane KS

Po Box 6149
Shreveport LA 71136

Skunkhallow 19 #1

Job Ticket: 47817

DST#: 5

ATTN: Kurt Talbott

Test Start: 2012.06.24 @ 14:36:11

Mud and Cushion Information

Mud Type: Gel Chem

Cushion Type:

Oil API:

deg API

Mud Weight: 9.00 lb/gal

Cushion Length:

ft

Water Salinity:

ppm

Viscosity: 56.00 sec/qt

Cushion Volume:

bbbl

Water Loss: 9.19 in³

Gas Cushion Type:

Resistivity: ohm.m

Gas Cushion Pressure:

psig

Salinity: 3600.00 ppm

Filter Cake: inches

Recovery Information

Recovery Table

| Length ft | Description | Volume bbl |
|--------------|--------------|---------------|
| 1.00 | Free Oil | 0.014 |
| 4.00 | Drilling Mud | 0.056 |

Total Length: 5.00 ft Total Volume: 0.070 bbl

Num Fluid Samples: 0

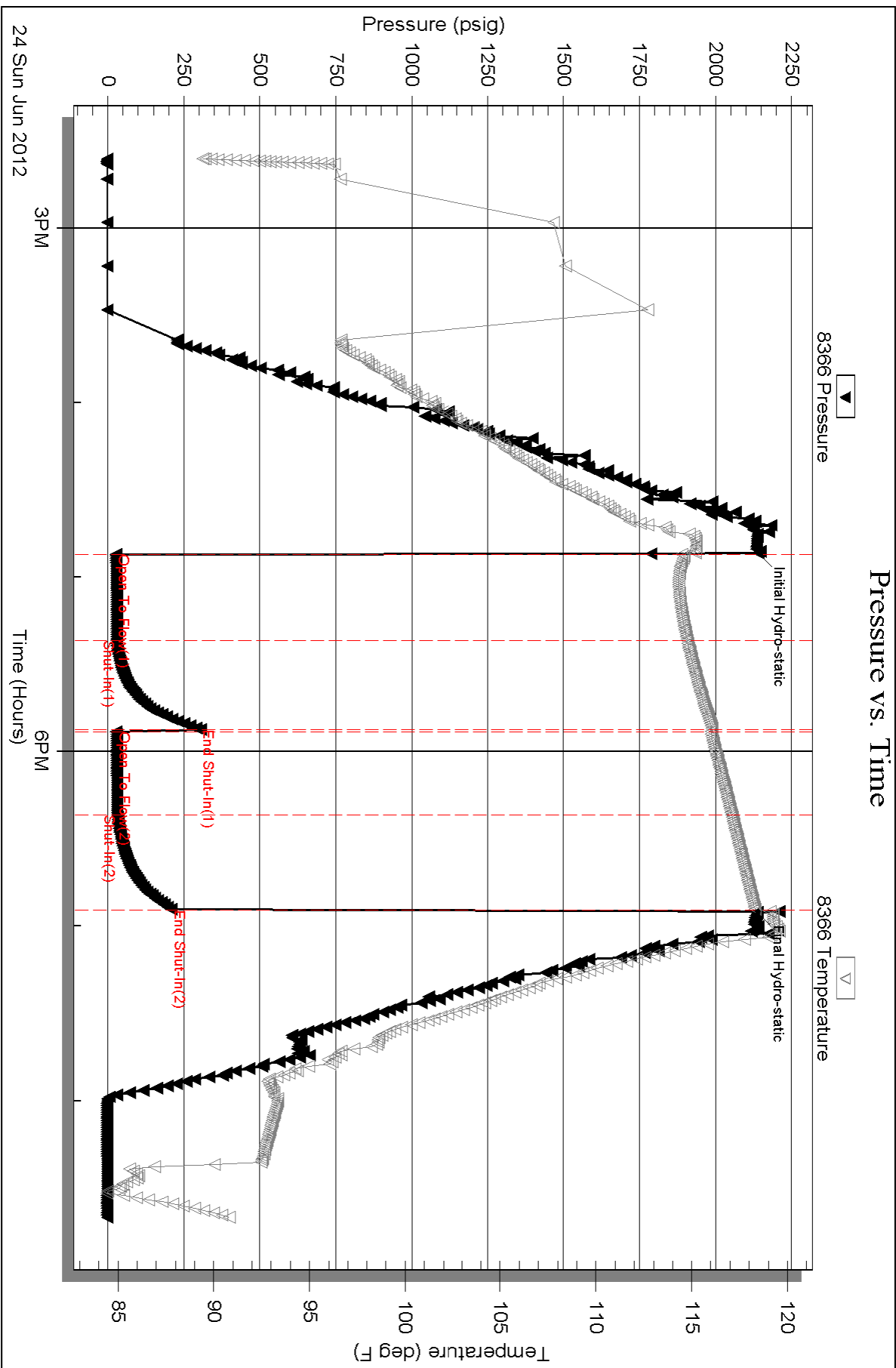
Num Gas Bombs: 0

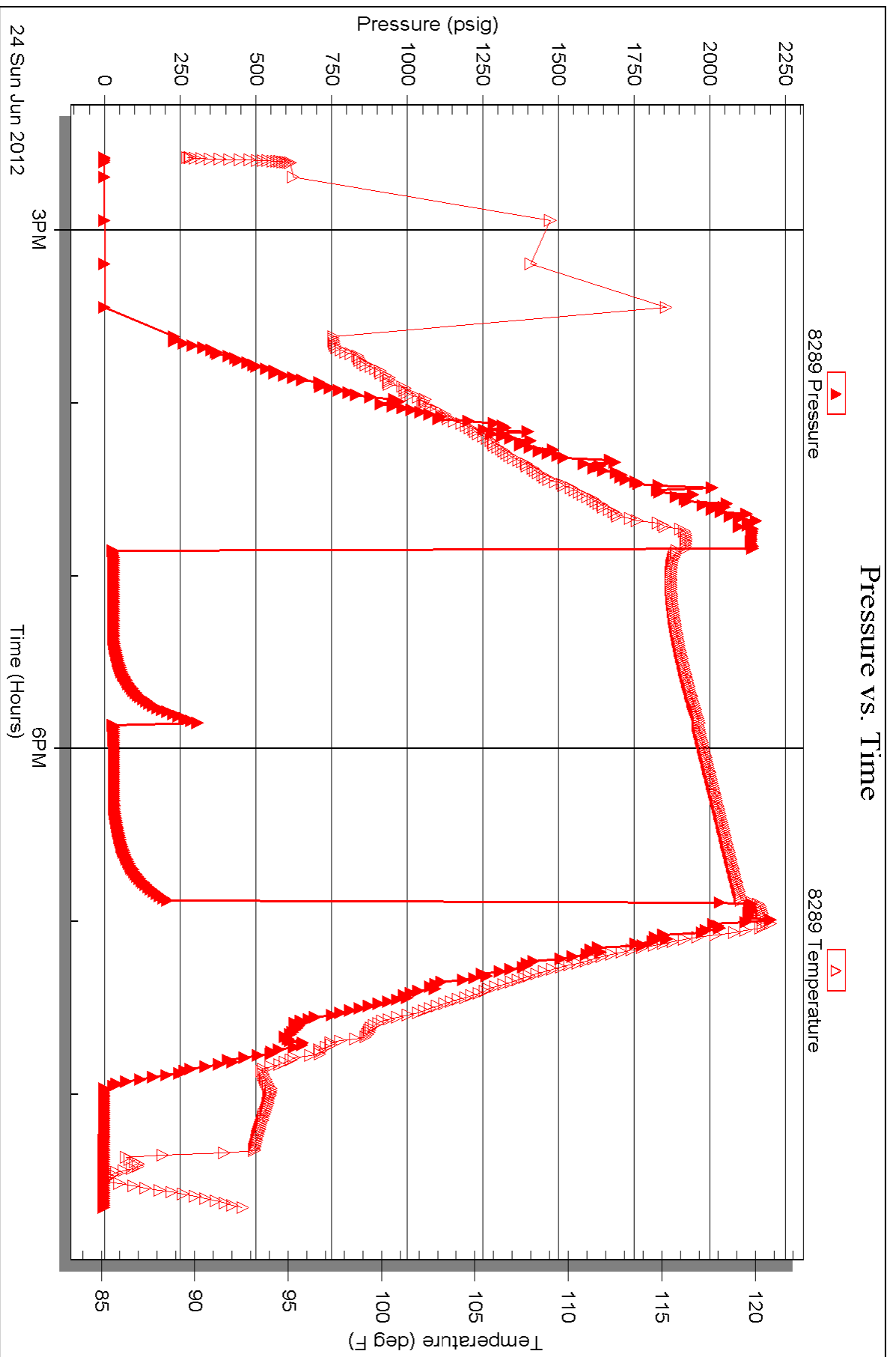
Serial #:

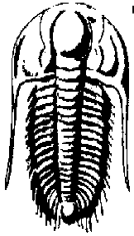
Laboratory Name:

Laboratory Location:

Recovery Comments:







TRILOBITE TESTING, INC

DRILL STEM TEST REPORT

O'Brien Resources
Po Box 6149
Shreveport LA 71136
ATTN: Kurt Talbott

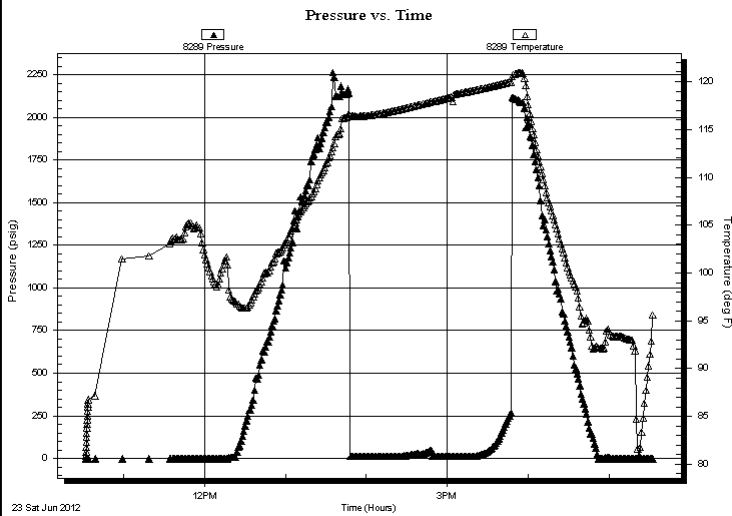
19-16s-29w Lane KS
Skunkhallow 19 #1
Job Ticket: 47816 **DST#: 4**
Test Start: 2012.06.23 @ 10:33:05

GENERAL INFORMATION:

Formation: **Myric Station**
Deviated: No Whipstock: 0.00 ft (KB)
Time Tool Opened: 13:48:20
Time Test Ended: 17:33:20
Interval: **4350.00 ft (KB) To 4385.00 ft (KB) (TVD)**
Total Depth: 4385.00 ft (KB) (TVD)
Hole Diameter: 7.88 inches Hole Condition: Good
Test Type: Conventional Bottom Hole (Reset)
Tester: Jason McLemore
Unit No: 54
Reference Elevations: 2787.00 ft (KB)
2776.00 ft (CF)
KB to GR/CF: 11.00 ft

Serial #: 8289 Outside
Press @ RunDepth: psig @ 4352.00 ft (KB) Capacity: 8000.00 psig
Start Date: 2012.06.23 End Date: 2012.06.23 Last Calib.: 2012.06.23
Start Time: 10:31:52 End Time: 17:32:20 Time On Btm:
Time Off Btm:

TEST COMMENT: IFP-Surge Upon Open, Dead
ISI-Dead
FFP-Dead, Flush Tool, Dead
FSI-Dead



| PRESSURE SUMMARY | | | |
|------------------|-----------------|--------------|------------|
| Time (Min.) | Pressure (psig) | Temp (deg F) | Annotation |
| | | | |
| | | | |
| | | | |
| | | | |
| | | | |
| | | | |
| | | | |
| | | | |
| | | | |
| | | | |
| | | | |

| Recovery | | |
|-------------|------------------|--------------|
| Length (ft) | Description | Volume (bbl) |
| 1.00 | Mud W/Oil Specks | 0.01 |
| | | |
| | | |
| | | |
| | | |

| Gas Rates | | | |
|-----------|----------------|-----------------|------------------|
| | Choke (inches) | Pressure (psig) | Gas Rate (Mcf/d) |
| | | | |
| | | | |
| | | | |
| | | | |

* Recovery from multiple tests



TRILOBITE
TESTING, INC

DRILL STEM TEST REPORT

FLUID SUMMARY

O'Brien Resources

19-16s-29w Lane KS

Po Box 6149
Shreveport LA 71136

Skunkhallow 19 #1

Job Ticket: 47816

DST#: 4

ATTN: Kurt Talbott

Test Start: 2012.06.23 @ 10:33:05

Mud and Cushion Information

| | | | | | |
|--------------|-----------------|-----------------------|------|-----------------|---------|
| Mud Type: | | Cushion Type: | | Oil API: | deg API |
| Mud Weight: | lb/gal | Cushion Length: | ft | Water Salinity: | ppm |
| Viscosity: | sec/qt | Cushion Volume: | bbbl | | |
| Water Loss: | in ³ | Gas Cushion Type: | | | |
| Resistivity: | ohm.m | Gas Cushion Pressure: | psig | | |
| Salinity: | ppm | | | | |
| Filter Cake: | inches | | | | |

Recovery Information

Recovery Table

| Length ft | Description | Volume bbbl |
|--------------|------------------|----------------|
| 1.00 | Mud W/Oil Specks | 0.014 |

Total Length: 1.00 ft Total Volume: 0.014 bbl

Num Fluid Samples: 0

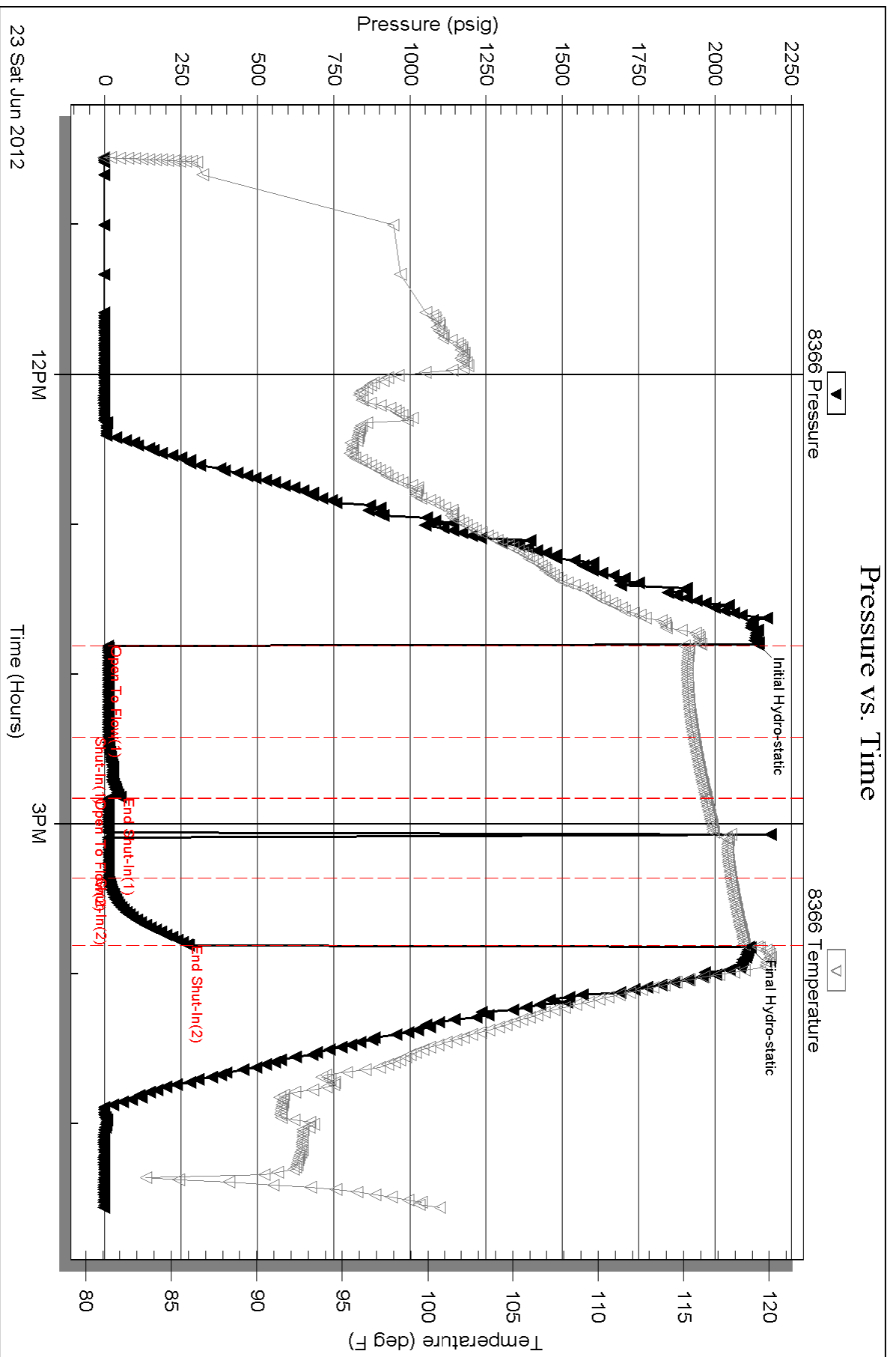
Num Gas Bombs: 0

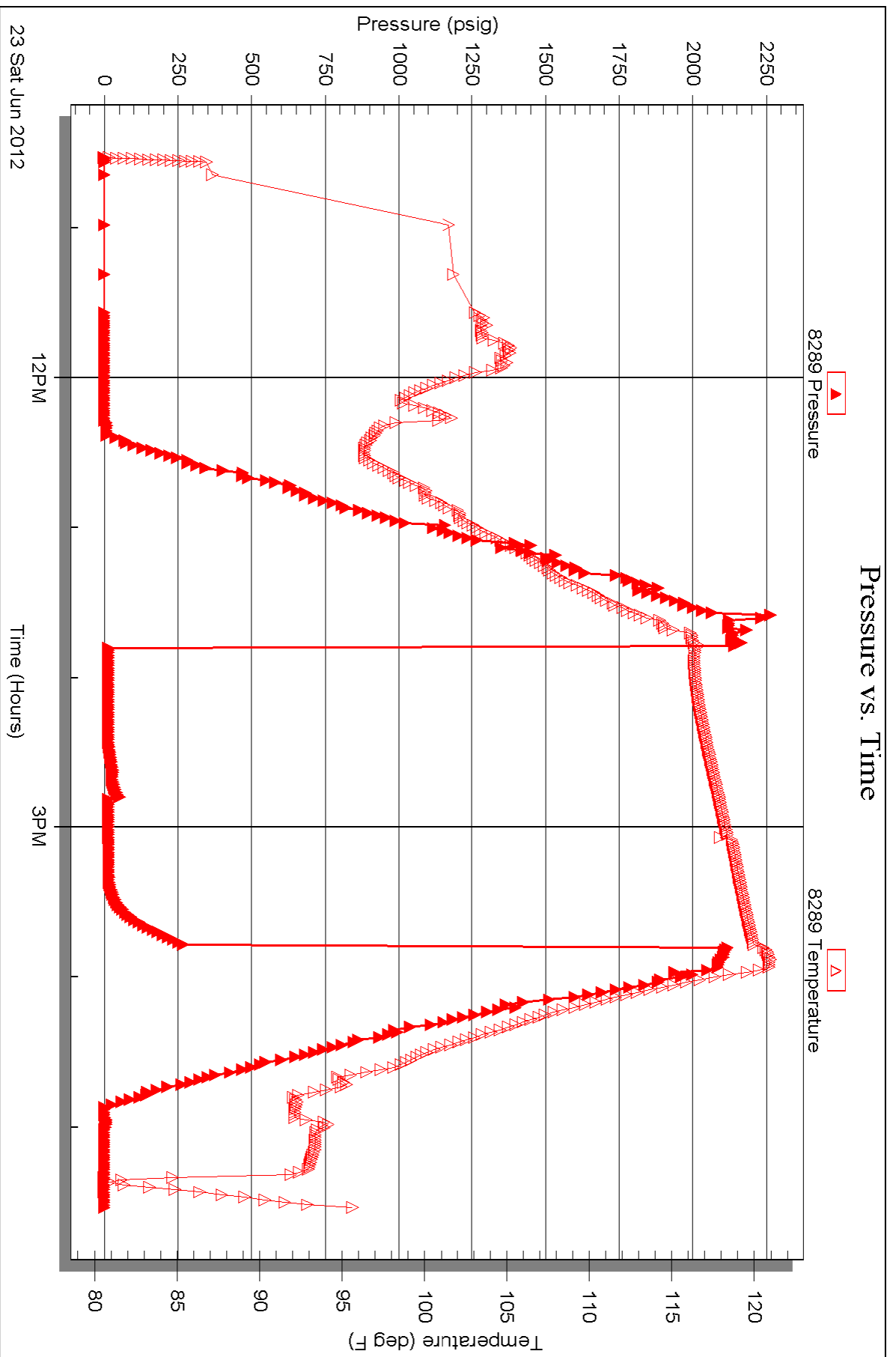
Serial #:

Laboratory Name:

Laboratory Location:

Recovery Comments:







TRILOBITE TESTING, INC.

DRILL STEM TEST REPORT

O'Brien Resources
 Po Box 6149
 Shreveport LA 71136
 ATTN: Kurt

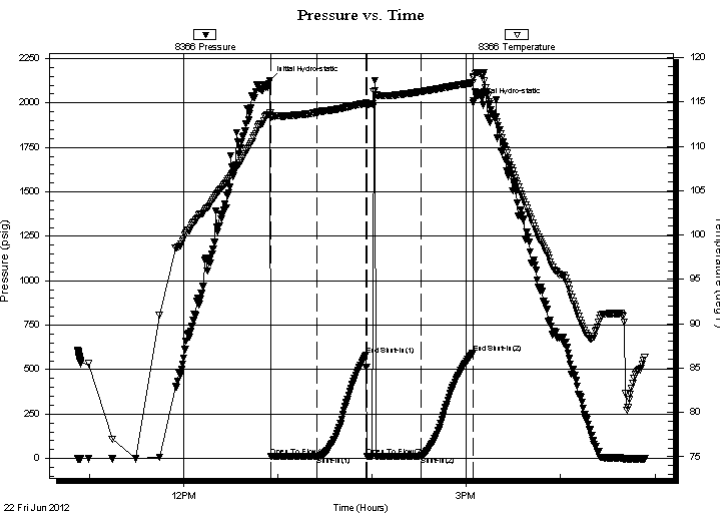
19-16s-29w Lane KS
Skunkhallow 19 #1
 Job Ticket: 47815 **DST#: 3**
 Test Start: 2012.06.22 @ 10:52:40

GENERAL INFORMATION:

Formation: **Marmaton**
 Deviated: No Whipstock: ft (KB)
 Time Tool Opened: 12:55:40
 Time Test Ended: 16:53:55
 Interval: **4232.00 ft (KB) To 4260.00 ft (KB) (TVD)**
 Total Depth: 4260.00 ft (KB) (TVD)
 Hole Diameter: 7.88 inches Hole Condition: Good
 Test Type: Conventional Bottom Hole (Reset)
 Tester: Jason McLemore
 Unit No: 54
 Reference Elevations: 2787.00 ft (KB)
 2776.00 ft (CF)
 KB to GR/CF: 11.00 ft

Serial #: 8366 Inside
 Press @ Run Depth: 13.51 psig @ 4234.00 ft (KB) Capacity: 8000.00 psig
 Start Date: 2012.06.22 End Date: 2012.06.22 Last Calib.: 2012.06.22
 Start Time: 10:52:42 End Time: 16:53:55 Time On Btm: 2012.06.22 @ 12:55:10
 Time Off Btm: 2012.06.22 @ 15:04:25

TEST COMMENT: IFP-Weak Intermittant Surface Blow
 ISI-Dead
 FFP-Dead, Flush Tool, Still Dead
 FSI-Dead



PRESSURE SUMMARY

| Time (Min.) | Pressure (psig) | Temp (deg F) | Annotation |
|-------------|-----------------|--------------|----------------------|
| 0 | 2124.45 | 113.84 | Initial Hydro-static |
| 1 | 10.83 | 113.21 | Open To Flow (1) |
| 30 | 12.05 | 113.86 | Shut-In(1) |
| 61 | 581.92 | 114.88 | End Shut-In(1) |
| 62 | 12.02 | 114.66 | Open To Flow (2) |
| 96 | 13.51 | 116.17 | Shut-In(2) |
| 129 | 591.95 | 117.17 | End Shut-In(2) |
| 130 | 1999.79 | 117.76 | Final Hydro-static |

Recovery

| Length (ft) | Description | Volume (bbl) |
|-------------|--------------|--------------|
| 3.00 | Drilling Mud | 0.04 |
| | | |
| | | |
| | | |
| | | |

* Recovery from multiple tests

Gas Rates

| Choke (inches) | Pressure (psig) | Gas Rate (Mcf/d) |
|----------------|-----------------|------------------|
| | | |



TRILOBITE TESTING, INC.

DRILL STEM TEST REPORT

O'Brien Resources
 Po Box 6149
 Shreveport LA 71136
 ATTN: Kurt

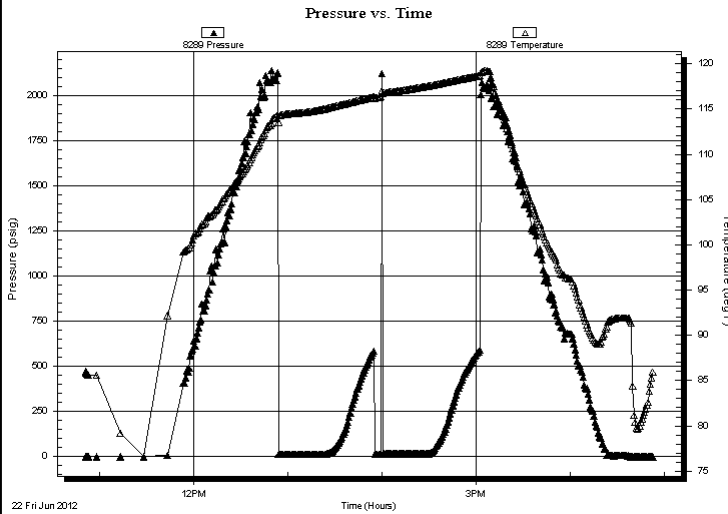
19-16s-29w Lane KS
Skunkhallow 19 #1
 Job Ticket: 47815 **DST#: 3**
 Test Start: 2012.06.22 @ 10:52:40

GENERAL INFORMATION:

Formation: **Marmaton**
 Deviated: No Whipstock: ft (KB)
 Test Type: Conventional Bottom Hole (Reset)
 Time Tool Opened: 12:55:40 Tester: Jason McLemore
 Time Test Ended: 16:53:55 Unit No: 54
 Interval: **4232.00 ft (KB) To 4260.00 ft (KB) (TVD)** Reference Elevations: 2787.00 ft (KB)
 Total Depth: 4260.00 ft (KB) (TVD) 2776.00 ft (CF)
 Hole Diameter: 7.88 inches Hole Condition: Good KB to GR/CF: 11.00 ft

Serial #: 8289 Outside
 Press @ Run Depth: psig @ 4234.00 ft (KB) Capacity: 8000.00 psig
 Start Date: 2012.06.22 End Date: 2012.06.22 Last Calib.: 2012.06.22
 Start Time: 10:50:54 End Time: 16:52:37 Time On Btm:
 Time Off Btm:

TEST COMMENT: IFP-Weak Intermittant Surface Blow
 ISI-Dead
 FFP-Dead, Flush Tool, Still Dead
 FSI-Dead



| PRESSURE SUMMARY | | | |
|------------------|-----------------|--------------|------------|
| Time (Min.) | Pressure (psig) | Temp (deg F) | Annotation |
| | | | |
| | | | |
| | | | |
| | | | |
| | | | |

| Recovery | | |
|-------------|--------------|--------------|
| Length (ft) | Description | Volume (bbl) |
| 3.00 | Drilling Mud | 0.04 |
| | | |
| | | |
| | | |
| | | |

* Recovery from multiple tests

| Gas Rates | | | |
|-----------|----------------|-----------------|------------------|
| | Choke (inches) | Pressure (psig) | Gas Rate (Mcf/d) |
| | | | |
| | | | |
| | | | |



**TRILOBITE
TESTING, INC.**

DRILL STEM TEST REPORT

FLUID SUMMARY

O'Brien Resources

19-16s-29w Lane KS

Po Box 6149
Shreveport LA 71136

Skunkhallow 19 #1

Job Ticket: 47815

DST#: 3

ATTN: Kurt

Test Start: 2012.06.22 @ 10:52:40

Mud and Cushion Information

Mud Type: Gel Chem

Cushion Type:

Oil API:

deg API

Mud Weight: lb/gal

Cushion Length:

ft

Water Salinity:

ppm

Viscosity: sec/qt

Cushion Volume:

bbbl

Water Loss: in³

Gas Cushion Type:

Resistivity: ohm.m

Gas Cushion Pressure:

psig

Salinity: ppm

Filter Cake: inches

Recovery Information

Recovery Table

| Length ft | Description | Volume bbl |
|--------------|--------------|---------------|
| 3.00 | Drilling Mud | 0.042 |

Total Length: 3.00 ft Total Volume: 0.042 bbl

Num Fluid Samples: 0

Num Gas Bombs: 0

Serial #:

Laboratory Name:

Laboratory Location:

Recovery Comments:

