



**TRILOBITE TESTING, INC.**

# DRILL STEM TEST REPORT

Caerus Ks.LLC

**36-24s-13w Stafford Ks.**

P.O.ox 1378  
Hays Ks.67601

**Harrison #36-23**

Job Ticket: 47545

**DST#: 1**

ATTN: Roger Fisher

Test Start: 2012.06.12 @ 16:13:33

## GENERAL INFORMATION:

Formation: **Lans. B**

Deviated: No Whipstock: ft (KB)

Time Tool Opened: 18:17:03

Time Test Ended: 01:24:33

Test Type: Conventional Bottom Hole (Initial)

Tester: Gary Pevoteaux

Unit No: 56

**Interval: 3587.00 ft (KB) To 3629.00 ft (KB) (TVD)**

Reference Elevations: 1922.00 ft (KB)

Total Depth: 3629.00 ft (KB) (TVD)

1909.00 ft (CF)

Hole Diameter: 7.88 inches Hole Condition: Fair

KB to GR/CF: 13.00 ft

**Serial #: 8352**

**Inside**

Press @RunDepth: 29.89 psig @ 3588.00 ft (KB)

Capacity: 8000.00 psig

Start Date: 2012.06.12

End Date:

2012.06.13

Last Calib.:

2012.06.13

Start Time: 16:13:38

End Time:

01:24:33

Time On Btm:

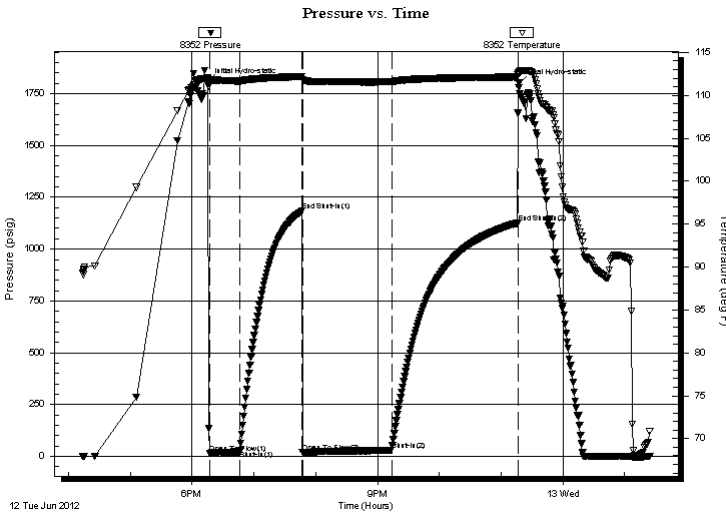
2012.06.12 @ 18:14:48

Time Off Btm:

2012.06.12 @ 23:17:03

**TEST COMMENT:** IF:Strong blow . B.O.B. in 18 secs.  
IS:No blow .  
FF:Strong blow . B.O.B. in 4 secs. GTS in 75 mins.  
FS:No blow .

## PRESSURE SUMMARY



Time (Min.)	Pressure (psig)	Temp (deg F)	Annotation
0	1806.00	112.02	Initial Hydro-static
3	16.24	111.55	Open To Flow (1)
32	28.71	111.65	Shut-In(1)
92	1184.67	112.19	End Shut-In(1)
93	18.74	111.82	Open To Flow (2)
179	29.89	111.57	Shut-In(2)
302	1125.97	112.15	End Shut-In(2)
303	1800.37	112.50	Final Hydro-static

## Recovery

Length (ft)	Description	Volume (bbl)
45.00	SOCM 1%o 99%m	0.63

## Gas Rates

	Choke (inches)	Pressure (psig)	Gas Rate (Mcf/d)



**TRILOBITE**  
**TESTING, INC.**

**DRILL STEM TEST REPORT**

**FLUID SUMMARY**

Caerus Ks.LLC

**36-24s-13w Stafford Ks.**

P.O.ox 1378  
Hays Ks.67601

**Harrison #36-23**

Job Ticket: 47545

**DST#: 1**

ATTN: Roger Fisher

Test Start: 2012.06.12 @ 16:13:33

**Mud and Cushion Information**

Mud Type: Gel Chem

Cushion Type:

Oil API:

deg API

Mud Weight: 9.00 lb/gal

Cushion Length:

ft

Water Salinity:

7000 ppm

Viscosity: 54.00 sec/qt

Cushion Volume:

bbbl

Water Loss: 8.79 in<sup>3</sup>

Gas Cushion Type:

Resistivity: 0.00 ohm.m

Gas Cushion Pressure:

psig

Salinity: 7000.00 ppm

Filter Cake: 0.20 inches

**Recovery Information**

Recovery Table

Length ft	Description	Volume bbl
45.00	SOCM 1%o 99%m	0.631

Total Length: 45.00 ft      Total Volume: 0.631 bbl

Num Fluid Samples: 0

Num Gas Bombs: 0

Serial #: none

Laboratory Name:

Laboratory Location:

Recovery Comments:

Serial #: 8352

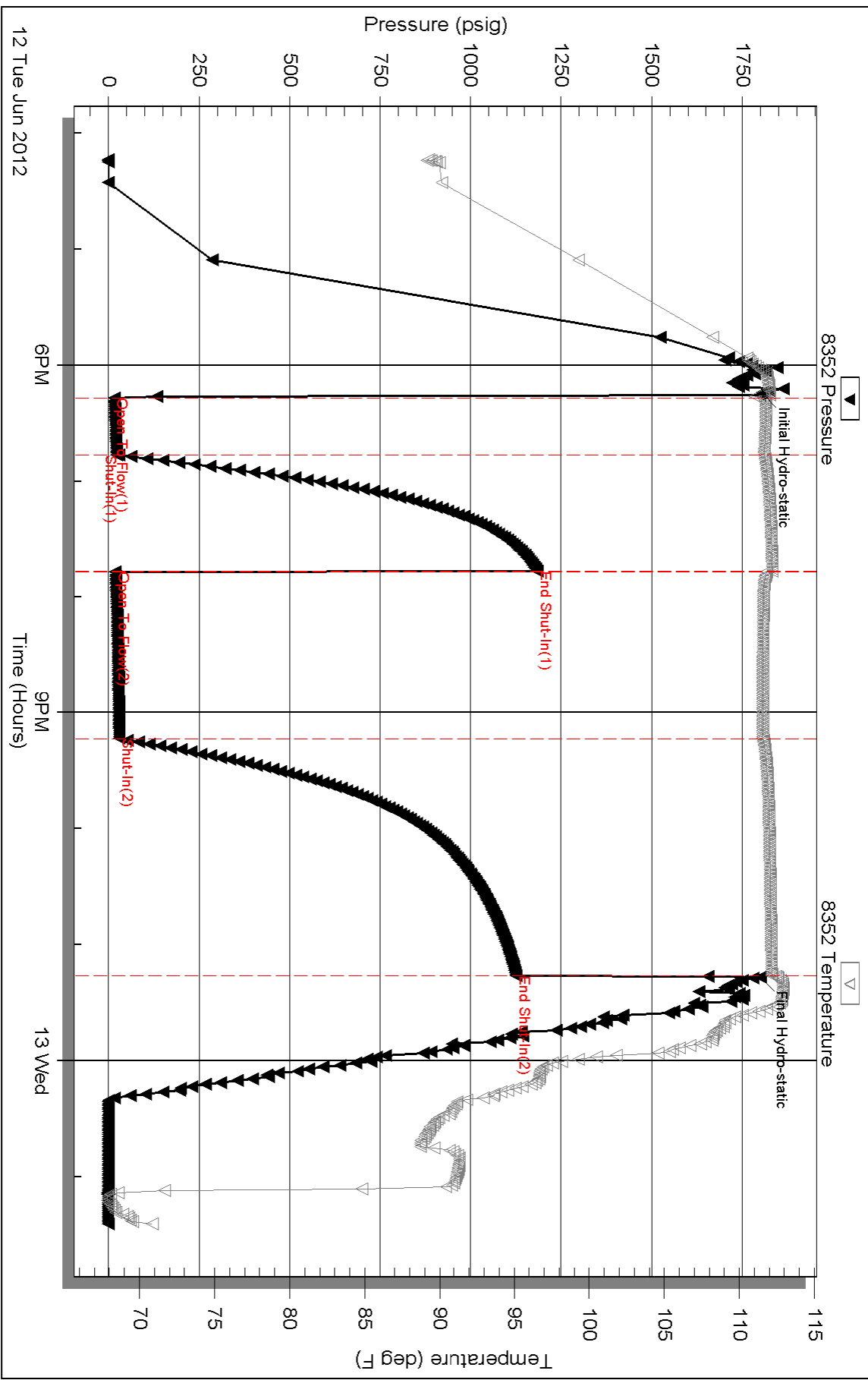
Inside

Caerus Ks, LLC

Harrison #36-23

DST Test Number: 1

### Pressure vs. Time



Triobite Testing, Inc

Ref. No: 47545

Printed: 2012.06.13 @ 07:55:43