



TRILOBITE TESTING, INC.

DRILL STEM TEST REPORT

Caerus Ks.LLC

36-24s-13w Stafford Ks.

P.O.ox 1378
Hays Ks.67601

Harrison #36-23

Job Ticket: 47548

DST#: 4

ATTN: Roger Fisher

Test Start: 2012.06.15 @ 05:08:02

GENERAL INFORMATION:

Formation: **Lans I - J**

Deviated: No Whipstock: ft (KB)

Time Tool Opened: 07:02:02

Time Test Ended: 14:22:32

Test Type: Conventional Bottom Hole (Reset)

Tester: Gary Pevoteaux

Unit No: 56

Interval: 3750.00 ft (KB) To 3800.00 ft (KB) (TVD)

Reference Elevations: 1922.00 ft (KB)

Total Depth: 3800.00 ft (KB) (TVD)

1909.00 ft (CF)

Hole Diameter: 7.88 inches Hole Condition: Fair

KB to GR/CF: 13.00 ft

Serial #: 8352

Inside

Press @ Run Depth: 169.64 psig @ 3751.00 ft (KB)

Capacity: 8000.00 psig

Start Date: 2012.06.15

End Date:

2012.06.15

Last Calib.:

2012.06.15

Start Time: 05:08:07

End Time:

14:22:32

Time On Btm:

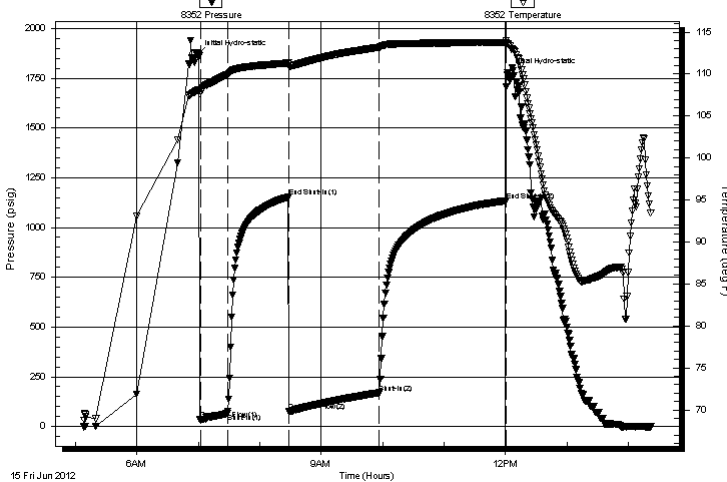
2012.06.15 @ 06:59:47

Time Off Btm:

2012.06.15 @ 12:02:17

TEST COMMENT: IF: Strong blow . B.O.B. in 3 1/2 mins.
IS: Weak blow . 1/4".
FF: Strong blow . B.O.B. in 8 1/2 mins.
FS: Weak blow . 1/2 - 1 1/2".

Pressure vs. Time



PRESSURE SUMMARY

Time (Min.)	Pressure (psig)	Temp (deg F)	Annotation
0	1865.73	108.08	Initial Hydro-static
3	34.54	107.70	Open To Flow (1)
29	66.20	109.96	Shut-In(1)
89	1152.21	111.30	End Shut-In(1)
89	75.09	110.97	Open To Flow (2)
177	169.64	113.18	Shut-In(2)
301	1134.46	113.77	End Shut-In(2)
303	1775.38	113.57	Final Hydro-static

Recovery

Length (ft)	Description	Volume (bbl)
0.00	830 ft.of GIP	0.00
80.00	GOCM 24%g 21%o 55%m	1.12
400.00	GOCMW 5%g 6%o 34%m 55%w	5.61
155.00	SW/w o specs/Rw .07ohms@88deg	2.17

* Recovery from multiple tests

Gas Rates

Choke (inches)	Pressure (psig)	Gas Rate (Mcf/d)



**TRILOBITE
TESTING, INC.**

DRILL STEM TEST REPORT

FLUID SUMMARY

Caerus Ks.LLC

36-24s-13w Stafford Ks.

P.O.ox 1378
Hays Ks.67601

Harrison #36-23

Job Ticket: 47548

DST#: 4

ATTN: Roger Fisher

Test Start: 2012.06.15 @ 05:08:02

Mud and Cushion Information

Mud Type: Gel Chem

Cushion Type:

Oil API:

deg API

Mud Weight: 9.00 lb/gal

Cushion Length:

ft

Water Salinity:

90000 ppm

Viscosity: 56.00 sec/qt

Cushion Volume:

bbf

Water Loss: 10.39 in³

Gas Cushion Type:

Resistivity: 0.00 ohm.m

Gas Cushion Pressure:

psig

Salinity: 10200.00 ppm

Filter Cake: 0.20 inches

Recovery Information

Recovery Table

Length ft	Description	Volume bbf
0.00	830 ft.of GIP	0.000
80.00	GOCM 24%g 21%o 55%m	1.122
400.00	GOCMW 5%g 6%o 34%m 55%w	5.611
155.00	SW/w o specs/Rw .07ohms @88deg	2.174

Total Length: 635.00 ft

Total Volume: 8.907 bbl

Num Fluid Samples: 0

Num Gas Bombs: 0

Serial #: none

Laboratory Name:

Laboratory Location:

Recovery Comments:

Serial #: 8352

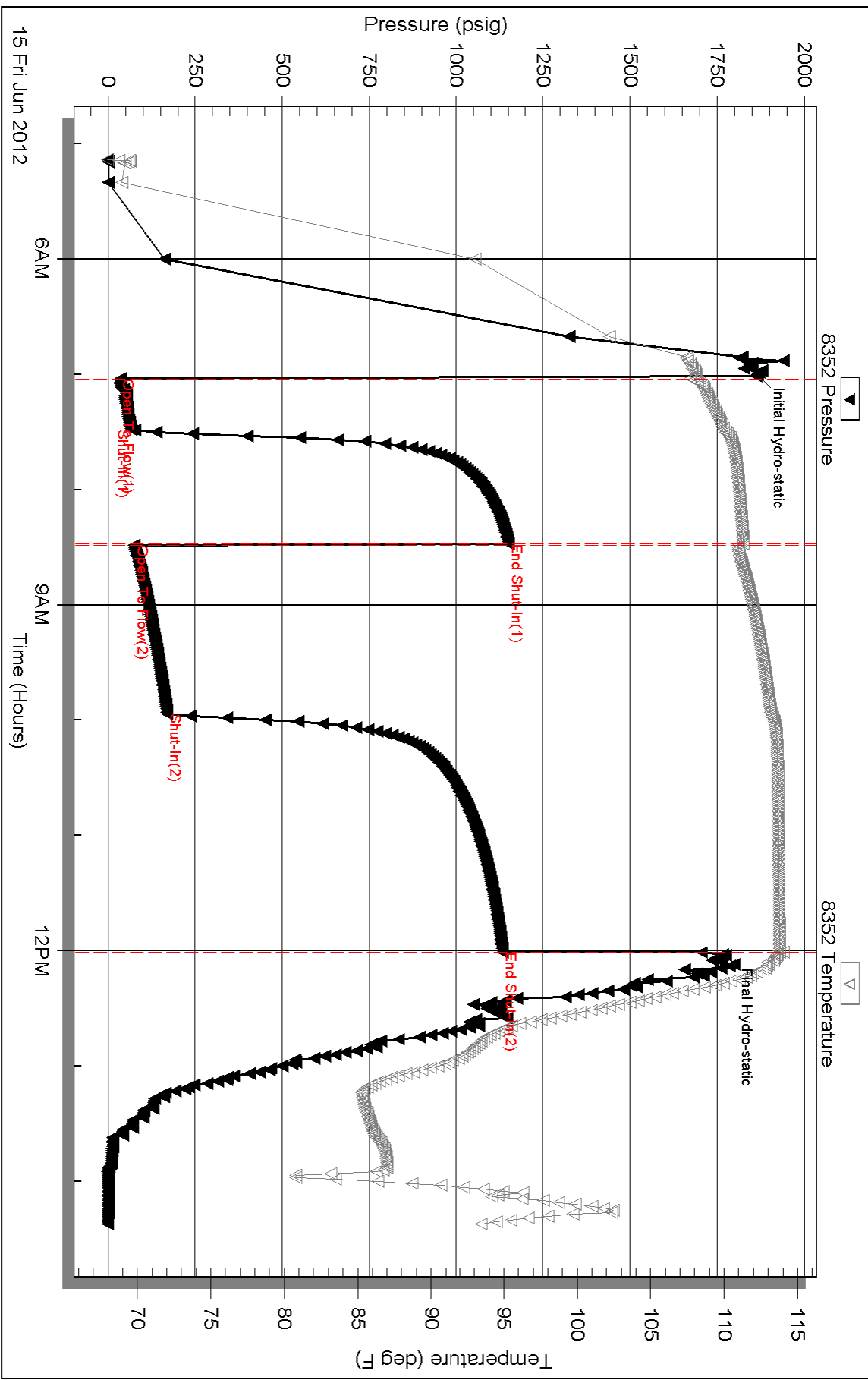
Inside

Caerus Ks, LLC

Harrison #36-23

DST Test Number: 4

Pressure vs. Time



Serial #: 8370

Outside Caerus Ks, LLC

Harrison #36-23

DST Test Number: 4

