



TRILOBITE TESTING, INC.

DRILL STEM TEST REPORT

Caerus Ks.LLC

36-24s-13w Stafford Ks.

P.O.ox 1378
Hays Ks.67601

Harrison #36-23

Job Ticket: 47576

DST#: 7

ATTN: Roger Fisher

Test Start: 2012.06.18 @ 13:23:04

GENERAL INFORMATION:

Formation: **Arbuckle**

Deviated: No Whipstock: ft (KB)

Time Tool Opened: 15:35:04

Time Test Ended: 22:41:49

Test Type: Conventional Bottom Hole (Reset)

Tester: Gary Pevoteaux

Unit No: 56

Interval: 4143.00 ft (KB) To 4159.00 ft (KB) (TVD)

Reference Elevations: 1922.00 ft (KB)

Total Depth: 4159.00 ft (KB) (TVD)

1909.00 ft (CF)

Hole Diameter: 7.88 inches Hole Condition: Fair

KB to GR/CF: 13.00 ft

Serial #: 8352 Inside

Press @ Run Depth: 12.06 psig @ 4144.00 ft (KB)

Capacity: 8000.00 psig

Start Date: 2012.06.18 End Date: 2012.06.18

Last Calib.: 2012.06.18

Start Time: 13:23:09 End Time: 22:41:49

Time On Btm: 2012.06.18 @ 15:33:19

Time Off Btm: 2012.06.18 @ 20:42:34

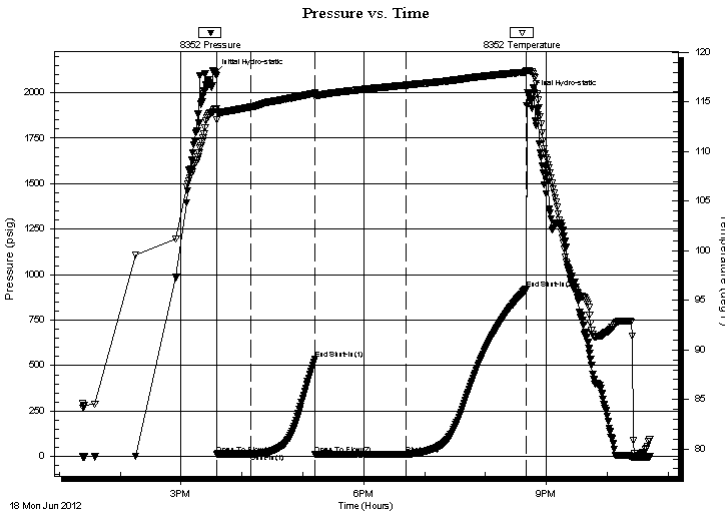
TEST COMMENT: IF:Very weak blow .Dead in 6 mins.

IS:No blow .

FF:No blow .

FS:No blow .

PRESSURE SUMMARY



Time (Min.)	Pressure (psig)	Temp (deg F)	Annotation
0	2107.01	114.28	Initial Hydro-static
2	13.20	113.17	Open To Flow (1)
36	15.58	114.50	Shut-In(1)
99	535.09	115.88	End Shut-In(1)
99	13.76	115.48	Open To Flow (2)
189	12.06	116.70	Shut-In(2)
307	920.83	118.01	End Shut-In(2)
310	1988.27	118.14	Final Hydro-static

Recovery

Length (ft)	Description	Volume (bbl)
2.00	Drig.mud w /scum of oil	0.03

Gas Rates

	Choke (inches)	Pressure (psig)	Gas Rate (Mcf/d)

* Recovery from multiple tests



**TRILOBITE
TESTING, INC.**

DRILL STEM TEST REPORT

Caerus Ks.LLC

36-24s-13w Stafford Ks.

P.O.ox 1378
Hays Ks.67601

Harrison #36-23

Job Ticket: 47576

DST#: 7

ATTN: Roger Fisher

Test Start: 2012.06.18 @ 13:23:04

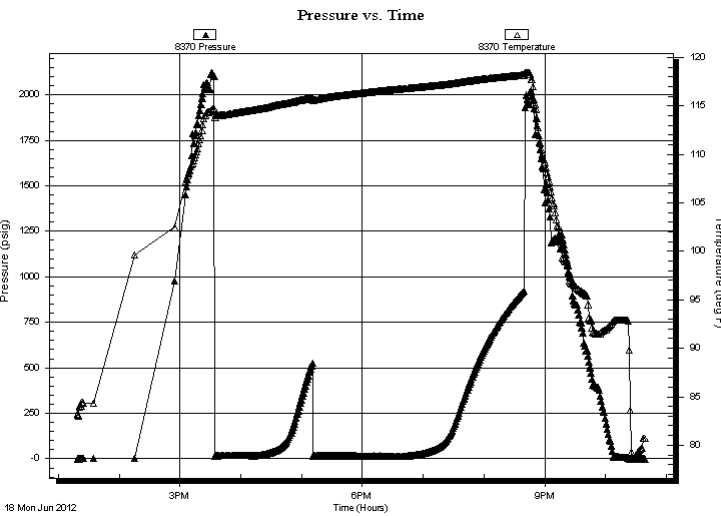
GENERAL INFORMATION:

Formation: Arbuckle			
Deviated: No Whipstock:	ft (KB)	Test Type: Conventional Bottom Hole (Reset)	
Time Tool Opened: 15:35:04		Tester: Gary Pevoteaux	
Time Test Ended: 22:41:49		Unit No: 56	
Interval: 4143.00 ft (KB) To 4159.00 ft (KB) (TVD)		Reference Elevations: 1922.00 ft (KB)	
Total Depth: 4159.00 ft (KB) (TVD)		1909.00 ft (CF)	
Hole Diameter: 7.88 inches	Hole Condition: Fair	KB to GR/CF: 13.00 ft	

Serial #: 8370 Outside

Press @ Run Depth: psig @ 4144.00 ft (KB)	Capacity: 8000.00 psig
Start Date: 2012.06.18	End Date: 2012.06.18
Start Time: 13:18:53	End Time: 22:38:48
	Last Calib.: 2012.06.18
	Time On Btm:
	Time Off Btm:

TEST COMMENT: IF: Very weak blow. Dead in 6 mins.
IS: No blow.
FF: No blow.
FS: No blow.



PRESSURE SUMMARY

Time (Min.)	Pressure (psig)	Temp (deg F)	Annotation

Recovery

Length (ft)	Description	Volume (bbl)
2.00	Drig. mud w /scum of oil	0.03

* Recovery from multiple tests

Gas Rates

Choke (inches)	Pressure (psig)	Gas Rate (Mcf/d)



**TRILOBITE
TESTING, INC.**

DRILL STEM TEST REPORT

FLUID SUMMARY

Caerus Ks.LLC

36-24s-13w Stafford Ks.

P.O.ox 1378
Hays Ks.67601

Harrison #36-23

Job Ticket: 47576

DST#: 7

ATTN: Roger Fisher

Test Start: 2012.06.18 @ 13:23:04

Mud and Cushion Information

Mud Type: Gel Chem

Cushion Type:

Oil API:

deg API

Mud Weight: 9.00 lb/gal

Cushion Length:

ft

Water Salinity:

9000 ppm

Viscosity: 52.00 sec/qt

Cushion Volume:

bbbl

Water Loss: 8.79 in³

Gas Cushion Type:

Resistivity: 0.00 ohm.m

Gas Cushion Pressure:

psig

Salinity: 9000.00 ppm

Filter Cake: 0.20 inches

Recovery Information

Recovery Table

Length ft	Description	Volume bbl
2.00	Drig.mud w /scum of oil	0.028

Total Length: 2.00 ft Total Volume: 0.028 bbl

Num Fluid Samples: 0

Num Gas Bombs: 0

Serial #: none

Laboratory Name:

Laboratory Location:

Recovery Comments:

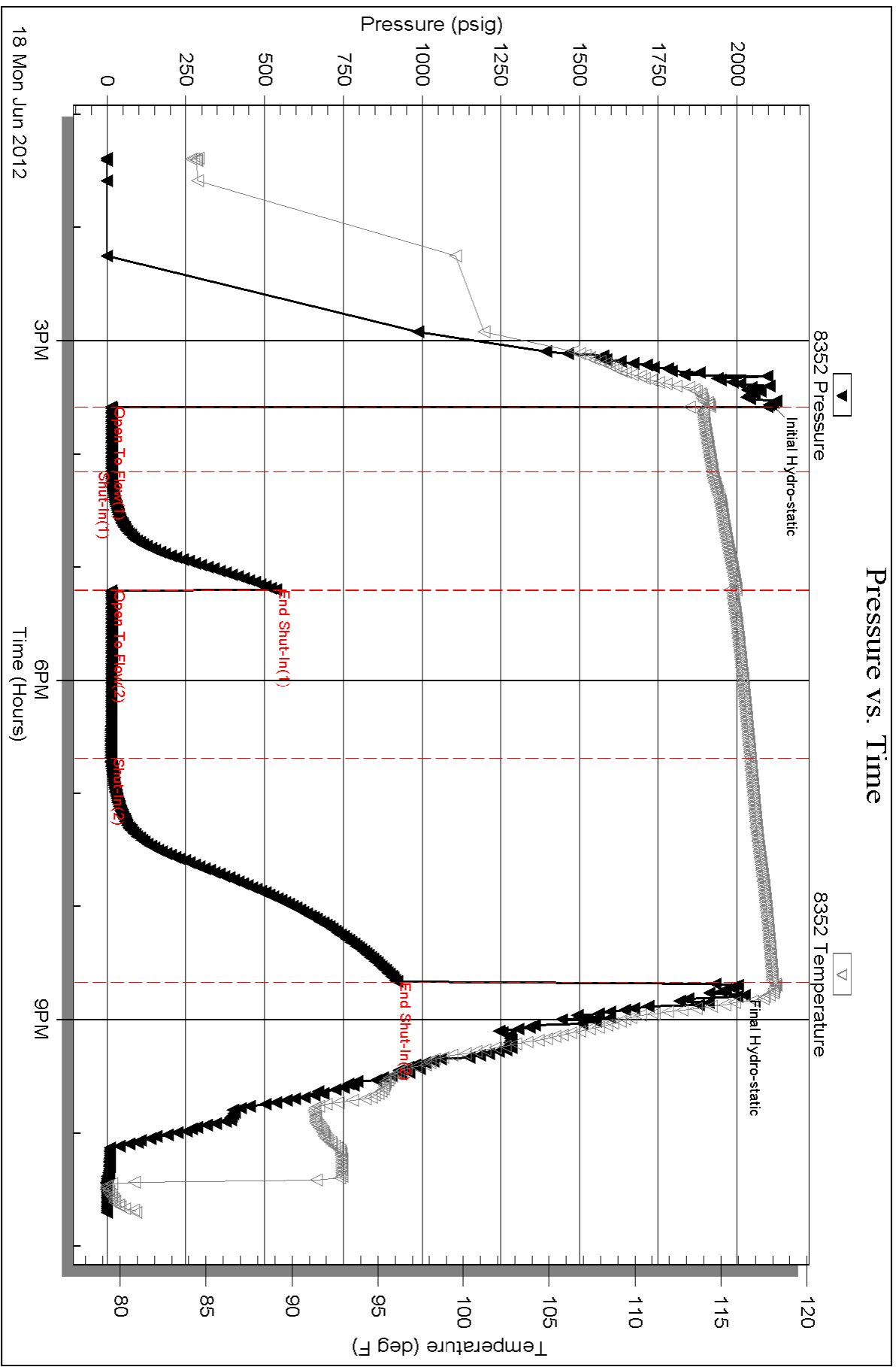
Serial #: 8352

Inside

Caerus Ks, LLC

Harrison #36-23

DST Test Number: 7



Serial #: 8370

Outside Caerus Ks, LLC

Harrison #36-23

DST Test Number: 7

