



**TRILOBITE
TESTING, INC.**

DRILL STEM TEST REPORT

Shakespear Oil Co.

S22-15-33 Logan, KS

202 W. Main St.
Salem, IL 62881

Zanobia #1-22

Job Ticket: 48931

DST#: 6

ATTN: Tim Priest

Test Start: 2012.07.11 @ 08:26:00

GENERAL INFORMATION:

Formation: **Pawnee - Ft. Scott**

Deviated: No Whipstock: ft (KB)

Time Tool Opened: 10:22:40

Time Test Ended: 14:14:39

Test Type: Conventional Bottom Hole (Reset)

Tester: Chuck Smith

Unit No: 62

Interval: **4263.00 ft (KB) To 4340.00 ft (KB) (TVD)**

Reference Elevations: 2813.00 ft (KB)

Total Depth: 4340.00 ft (KB) (TVD)

2803.00 ft (CF)

Hole Diameter: 7.88 inches Hole Condition: Good

KB to GR/CF: 10.00 ft

Serial #: 8018

Inside

Press @ Run Depth: 20.19 psig @ 4265.00 ft (KB)

Capacity: 8000.00 psig

Start Date: 2012.07.11

End Date:

2012.07.11

Last Calib.:

2012.07.11

Start Time: 08:26:02

End Time:

14:14:40

Time On Btm:

2012.07.11 @ 10:19:50

Time Off Btm:

2012.07.11 @ 12:23:00

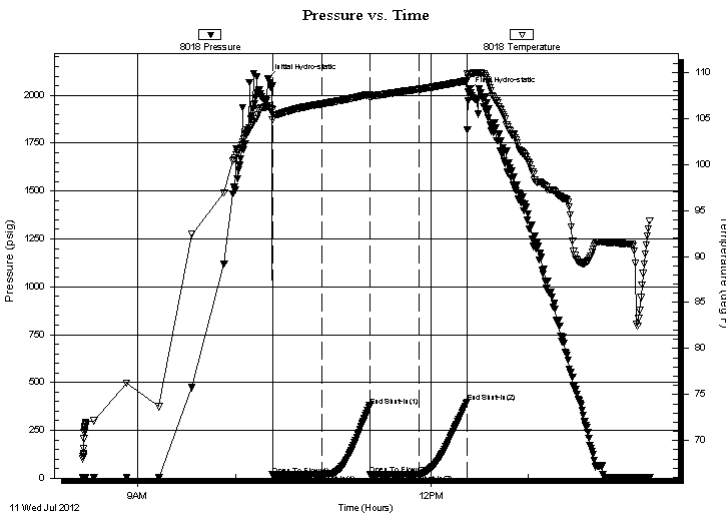
TEST COMMENT: Weak blow died @ 6 min.

No return.

No blow.

No return.

PRESSURE SUMMARY



Time (Min.)	Pressure (psig)	Temp (deg F)	Annotation
0	2085.24	106.39	Initial Hydro-static
3	16.92	104.90	Open To Flow (1)
34	18.17	106.59	Shut-In(1)
63	377.96	107.60	End Shut-In(1)
63	18.92	107.29	Open To Flow (2)
93	20.19	108.17	Shut-In(2)
123	396.85	109.09	End Shut-In(2)
124	2019.26	109.44	Final Hydro-static

Recovery

Length (ft)	Description	Volume (bbl)
1.00	OSM 100m	0.00

* Recovery from multiple tests

Gas Rates

Choke (inches)	Pressure (psig)	Gas Rate (Mcf/d)



**TRILOBITE
TESTING, INC.**

DRILL STEM TEST REPORT

FLUID SUMMARY

Shakespear Oil Co.

S22-15-33 Logan, KS

202 W. Main St.
Salem, IL 62881

Zanobia #1-22

Job Ticket: 48931

DST#: 6

ATTN: Tim Priest

Test Start: 2012.07.11 @ 08:26:00

Mud and Cushion Information

Mud Type: Gel Chem

Cushion Type:

Oil API:

deg API

Mud Weight: 9.00 lb/gal

Cushion Length:

ft

Water Salinity:

ppm

Viscosity: 50.00 sec/qt

Cushion Volume:

bbbl

Water Loss: 9.59 in³

Gas Cushion Type:

Resistivity: ohm.m

Gas Cushion Pressure:

psig

Salinity: 7200.00 ppm

Filter Cake: 2.00 inches

Recovery Information

Recovery Table

Length ft	Description	Volume bbl
1.00	OSM 100m	0.005

Total Length: 1.00 ft Total Volume: 0.005 bbl

Num Fluid Samples: 0

Num Gas Bombs: 0

Serial #:

Laboratory Name:

Laboratory Location:

Recovery Comments:

