

TRILOBITE
TESTING, INC.

DRILL STEM TEST REPORT

Prepared For: **R & B Oil & Gas**

PO Box 195
Attica, KS 67009

ATTN: Tim Pierce

Bock B #1

34-26s-9w Reno<KS

Start Date: 2012.04.08 @ 18:40:18

End Date: 2012.04.09 @ 01:38:33

Job Ticket #: 47479 DST #: 1

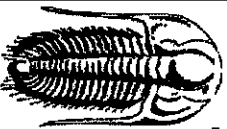
Trilobite Testing, Inc

PO Box 362 Hays, KS 67601

ph: 785-625-4778 fax: 785-625-5620

ORIGINAL

Printed: 2012.05.11 @ 13:28:10



TRIBOLITE
TESTING, INC

DRILL STEM TEST REPORT

R & B Oil & Gas

34-26s-9w Reno<KS

PO Box 195

Block B #1

Atlica, KS 67009

Job Ticket: 47479

DST#: 1

ATTN: Tim Pierce

Test Start: 2012.04.08 @ 18:40:18

GENERAL INFORMATION:

Formation: Mississippi
 Deviated: No Whiptock: ft (KB)
 Time Tool Opened: 20:28:18
 Time Test Ended: 01:38:33

Test Type: Conventional Bottom Hole (Initial)
 Tester: Leal Cason
 Unit No.: 45

Interval: 3910.00 ft (KB) To 3970.00 ft (KB) (TVD)
 Total Depth: 3970.00 ft (KB) (TVD)
 Hole Diameter: 7.88 inches Hole Condition: Good

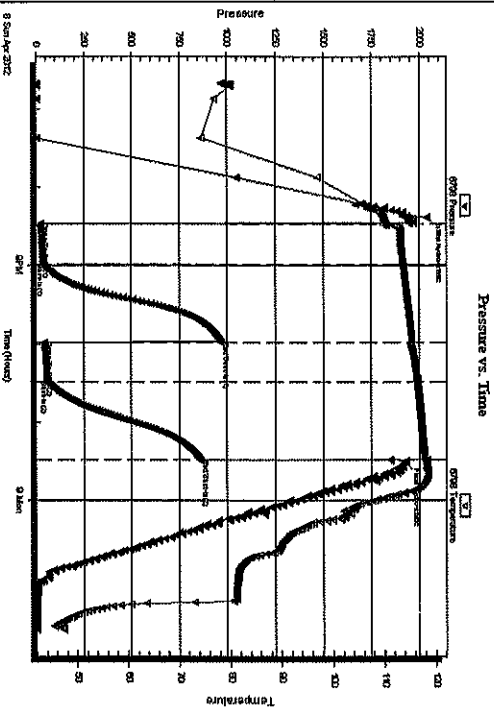
Reference Elevations: 1707.00 ft (KB)
 1699.00 ft (CF)
 KB to GR/CF: 8.00 ft

Serial #: 6798 Inside
 Press@RunDepth: 57.73 psig @ 3911.00 ft (KB)
 Start Date: 2012.04.08 End Date: 2012.04.09
 Start Time: 18:40:19 End Time: 01:38:33

Capacity: 8000.00 psig
 Last Calib.: 2012.04.09
 Time On Btm: 2012.04.08 @ 20:23:03
 Time Off Btm: 2012.04.08 @ 23:30:03

TEST COMMENT:

IF: Fair Blow, Built To 10 1/2 inches
 IS: No Blow Back
 FF: Fair Blow, Built To 9 inches
 FSI: No Blow Back



PRESSURE SUMMARY

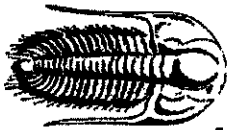
Time (Min.)	Pressure (psig)	Temp (deg F)	Annotation
0	2042.28	109.78	Initial Hydro-Static
6	23.12	109.74	Open To Flow (1)
36	38.40	113.64	Shut-In(1)
96	968.49	115.38	End Shut-In(1)
96	43.35	115.05	Open To Flow (2)
126	57.73	116.43	Shut-In(2)
186	861.26	117.83	End Shut-In(2)
187	1926.15	118.11	Final Hydro-Static

Recovery

Length (ft)	Description	Volume (bbl)
70.00	Mud	0.34

Gas Rates

Choke (inches)	Pressure (psig)	Gas Rate (Mcf/d)



TRILOBITE
TESTING, INC

DRILL STEM TEST REPORT

TOOL DIAGRAM

R & B Oil & Gas

34-26s-9w Reno<KS

PO Box 195

Block B #1

Attica, KS 67009

Job Ticket: 47479

DST#: 1

ATTN: Tim Pierce

Test Start: 2012.04.08 @ 18:40:18

Tool Information

Drill Pipe:	Length: 3798.00 ft	Diameter:	3.80 inches	Volume:	53.28 bbl	Tool Weight:	2100.00 lb
Heavy Wt. Pipe:	Length: ft	Diameter:	0.00 inches	Volume:	0.00 bbl	Weight set on Packer:	25000.00 lb
Drill Collar:	Length: 121.00 ft	Diameter:	2.25 inches	Volume:	0.60 bbl	Weight to Pull Loose:	70000.00 lb
				<u>Total Volume:</u>	53.88 bbl	Tool Chased	ft
Drill Pipe Above KB:	29.00 ft					String Weight: Initial	65000.00 lb
Depth to Top Packer:	3910.00 ft					Final	65000.00 lb
Depth to Bottom Packer:	ft						
Interval between Packers:	60.00 ft						
Tool Length:	80.00 ft						
Number of Packers:	2	Diameter:	6.75 inches				

Tool Comments:

Tool Description	Length (ft)	Serial No.	Position	Depth (ft)	Accum. Lengths
Shut In Tool	5.00			3895.00	
Hydraulic tool	5.00			3900.00	
Packer	5.00			3905.00	20.00 Bottom Of Top Packer
Packer	5.00			3910.00	
Stubb	1.00			3911.00	
Recorder	0.00	6798	Inside	3911.00	
Recorder	0.00	8367	Outside	3911.00	
Perforations	3.00			3914.00	
Change Over Sub	1.00			3915.00	
Drill Pipe	31.00			3946.00	
Change Over Sub	1.00			3947.00	
Perforations	20.00			3967.00	
Bullnose	3.00			3970.00	60.00 Bottom Packers & Anchor
Total Tool Length:				80.00	



TRILOBITE
TESTING, INC

DRILL STEM TEST REPORT

FLUID SUMMARY

R & B Oil & Gas
PO Box 195
Atlica, KS 67009
ATTN: Tim Pierce

34-26s-9w Reno<KS
Block B #1
Job Ticket: 47479
DST#:1
Test Start: 2012.04.08 @ 18:40:18

Mud and Cushion Information

Mud Type: Gel Chem
Mud Weight: 9.00 lb/gal
Viscosity: 45.00 sec/qt
Water Loss: 8.79 in²
Resistivity: ohm.m
Salinity: 3000.00 ppm
Filter Cake: 0.20 inches

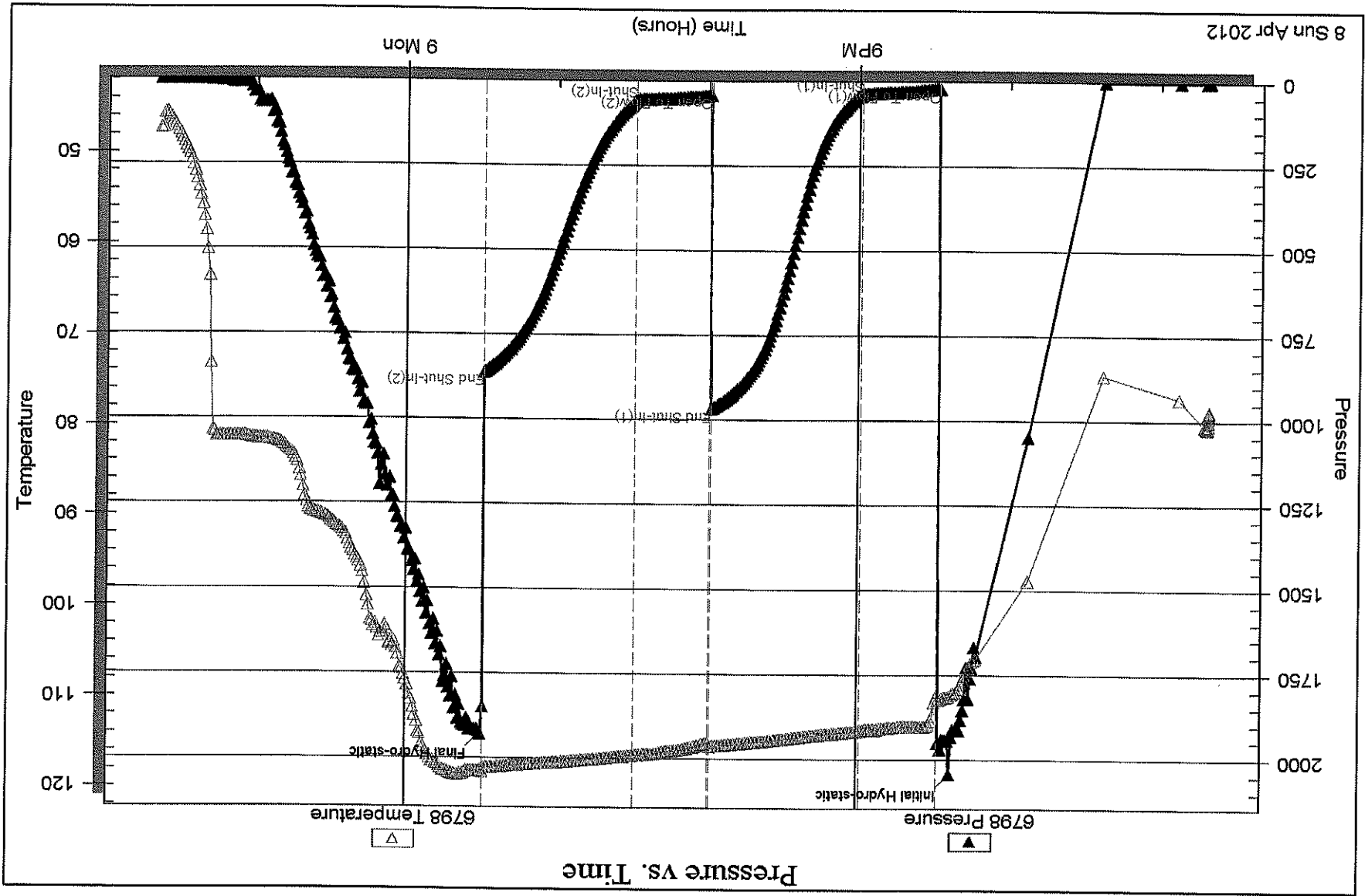
Cushion Type:
Cushion Length: ft
Cushion Volume: bbl
Gas Cushion Type:
Gas Cushion Pressure: psig
Oil API:
Water Salinity: ppm
deg API

Recovery Information

Recovery Table

Length ft	Description	Volume bbl
70.00	Mud	0.344

Total Length: 70.00 ft Total Volume: 0.344 bbl
Num Fluid Samples: 0 Num Gas Borbs: 0 Serial #:
Laboratory Name: Laboratory Location:
Recovery Comments:

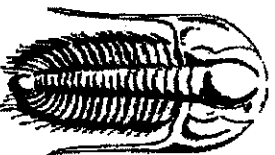


Serial #: 6798

Inside R & B Oil & Gas

Block B #1

DST Test Number: 1



TRILOBITE
TESTING, INC.

DRILL STEM TEST REPORT

Prepared For: **R & B Oil & Gas**

PO Box 195
Attica, KS 67009

ATTN: Tim Pierce

Bock B #1

34-26s-9w Reno<KS

Start Date: 2012.04.09 @ 15:07:06

End Date: 2012.04.09 @ 21:55:51

Job Ticket #: 47480 DST #: 2

Trilobite Testing, Inc

PO Box 362 Hays, KS 67601

ph: 785-625-4778 fax: 785-625-5620

Printed: 2012.05.11 @ 13:28:30



TRIOLOBITE
TESTING, INC

DRILL STEM TEST REPORT

R & B Oil & Gas

34-26s-9w Reno<KS

PO Box 195

Block B #1

Attica, KS 67009

Job Ticket: 47480

DST# 2

ATTN: Tim Pierce

Test Start: 2012.04.09 @ 15:07:06

GENERAL INFORMATION:

Formation: **Viola**
 Deviated: **No** Whipstock: **ft (KB)**
 Time Tool Opened: 16:48:06
 Time Test Ended: 21:55:51
 Interval: **4200.00 ft (KB) To 4213.00 ft (KB) (TVD)**
 Total Depth: **4213.00 ft (KB) (TVD)**
 Hole Diameter: **7.88** inchHole Condition: **Good**

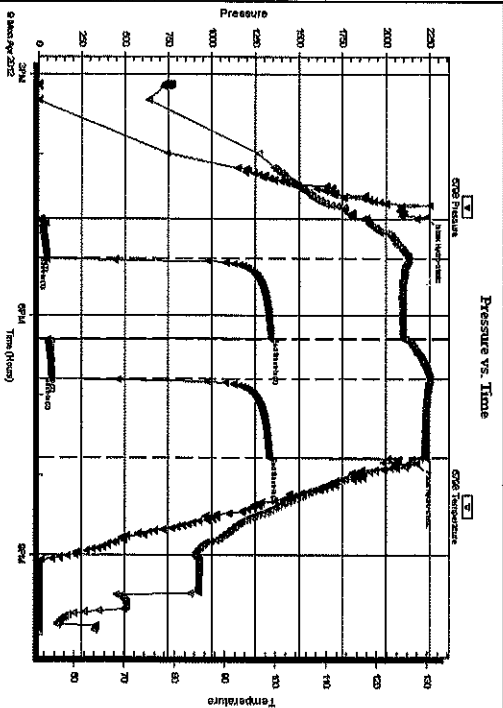
Test Type: **Conventional Bottom Hole (Reset)**
 Tester: **Leal Cason**
 Unit No: **45**
 Reference Elevations: **1707.00 ft (KB)**
1699.00 ft (CF)
KB to GR/CF: 8.00 ft

Serial #: 6798 **Inside**
 Press@RunDepth: **76.36 psig @ 4201.00 ft (KB)**
 Start Date: **2012.04.09** End Date: **2012.04.09**
 Start Time: **15:07:07** End Time: **21:55:51**

Capacity: **8000.00 psig**
 Last Callb.: **2012.04.09**
 Time On Btm: **2012.04.09 @ 16:46:51**
 Time Off Btm: **2012.04.09 @ 19:51:21**

TEST COMMENT:

IF: Weak 2 inch Blow
 IS: No Blow Back
 FF: Weak 1 1/2 inch Blow
 FS: No Blow Back



PRESSURE SUMMARY

Time (Min.)	Pressure (psig)	Temp (deg F)	Annotation
0	2230.39	115.16	Initial Hydro-static
2	15.91	117.40	Open To Flow (1)
31	50.74	126.42	Shut-In (1)
91	1341.36	125.29	End Shut-In (1)
92	52.02	125.60	Open To Flow (2)
121	76.36	130.65	Shut-In (2)
181	1332.14	129.63	End Shut-In (2)
185	2173.90	126.18	Final Hydro-static

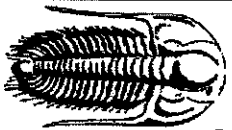
Recovery

Length (ft)	Description	Volume (bbl)
121.00	Water	0.60
5.00	MCW 30%M 70%W	0.07

Gas Rates

Choke (Inches)	Pressure (psig)	Gas Rate (Mcf/d)

* Recovery from multiple tests



TRILOBITE
TESTING, INC

DRILL STEM TEST REPORT

TOOL DIAGRAM

R & B Oil & Gas

34-26-9w Reno<KS

PO Box 195

Block B #1

Atlica, KS 67009

Job Ticket: 47480

DST #: 2

ATTN: Tim Pierce

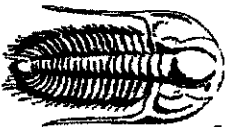
Test Start: 2012.04.09 @ 15:07:06

Tool Information

Drill Pipe:	Length: 4078.00 ft	Diameter: 3.80 inches	Volume: 57.20 bbl	Tool Weight: 2100.00 lb
Heavy Wt. Pipe:	Length: ft	Diameter: 0.00 inches	Volume: 0.00 bbl	Weight set on Packer: 25000.00 lb
Drill Collar:	Length: 121.00 ft	Diameter: 2.25 inches	Volume: 0.60 bbl	Weight to Pull Loose: 70000.00 lb
			Total Volume: 57.80 bbl	Tool Chased ft
Drill Pipe Above KB:	19.00 ft			String Weight: Initial 66000.00 lb
Depth to Top Packer:	4200.00 ft			Final 66000.00 lb
Depth to Bottom Packer:	ft			
Interval betw een Packers:	13.00 ft			
Tool Length:	33.00 ft			
Number of Packers:	2	Diameter: 6.75 inches		

Tool Comments:

Tool Description	Length (ft)	Serial No.	Position	Depth (ft)	Accum. Lengths
Shut In Tool	5.00			4185.00	
Hydraulic tool	5.00			4190.00	
Packer	5.00			4195.00	20.00 Bottom Of Top Packer
Packer	5.00			4200.00	
Stubb	1.00			4201.00	
Recorder	0.00	6798	Inside	4201.00	
Recorder	0.00	8367	Outside	4201.00	
Perforations	9.00			4210.00	
Bullnose	3.00			4213.00	13.00 Bottom Packers & Anchor
Total Tool Length:	33.00				



TRILOBITE
TESTING, INC

DRILL STEM TEST REPORT

FLUID SUMMARY

R & B Oil & Gas
PO Box 195
Atica, KS 67009
ATTN: Tim Perce

34-26s-9w Reno<KS
Bock B #1
Job Ticket: 47480
DST#: 2
Test Start: 2012.04.09 @ 15:07:06

Mud and Cushion Information

Mud Type: Gel Chem
Mud Weight: 9.00 lb/gal
Viscosity: 49.00 sec/qt
Water Loss: 8.79 in²
Resistivity: ohm.m
Salinity: 4000.00 ppm
Filter Cake: 0.20 inches

Cushion Type:
Cushion Length: ft
Cushion Volume: bbl
Gas Cushion Type:
Gas Cushion Pressure: psig
Oil API: deg API
Water Salinity: 61000 ppm

Recovery Information

Recovery Table

Length ft	Description	Volume bbl
121.00	Water	0.595
5.00	MCW 30%M 70%W	0.070

Total Length: 126.00 ft Total Volume: 0.665 bbl
Num Fluid Samples: 0 Num Gas Bombs: 0 Serial #:
Laboratory Name: Laboratory Location:
Recovery Comments: RW w as .12 @ 80 degrees

