

DRILL STEM TEST REPORT

Carrie Exploration
 210 West 22ND
 Hays, Kansas 67601
 ATTN: Jeff Lawler

23/12S/22W/Trego
Doxon/Bunker #C-1
 Job Ticket: 17154 **DST#: 3**
 Test Start: 2012.02.09 @ 20:56:00

GENERAL INFORMATION:

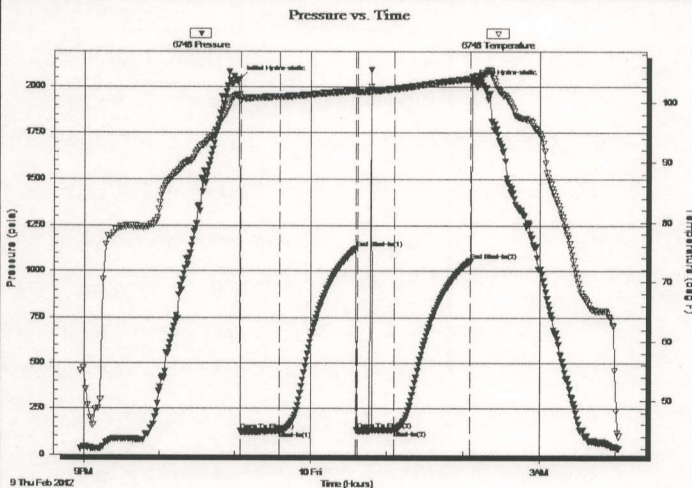
Formation: **Marmaton/Pawnee**
 Deviated: No Whipstock: ft (KB)
 Time Tool Opened: 23:05:00
 Time Test Ended: 04:02:30
 Interval: **3990.00 ft (KB) To 4035.00 ft (KB) (TVD)**
 Total Depth: 4035.00 ft (KB) (TVD)
 Hole Diameter: 7.88 inches Hole Condition: Fair
 Test Type: Conventional Bottom Hole (Initial)
 Tester: Ken Swinney
 Unit No: 3325 Hays/50
 Reference Elevations: 2369.00 ft (KB)
 2362.00 ft (CF)
 KB to GR/CF: 7.00 ft

Serial #: 6748

Inside

Press@RunDepth: 134.36 psia @ 4031.00 ft (KB) Capacity: 5000.00 psia
 Start Date: 2012.02.09 End Date: 2012.02.10 Last Calib.: 2012.02.09
 Start Time: 20:56:00 End Time: 04:02:30 Time On Btm: 2012.02.09 @ 23:03:30
 Time Off Btm: 2012.02.10 @ 02:06:30

TEST COMMENT: 1ST Open 30 Minutes/Weak blow /Blow built to 2 inches
 1ST Shut In 60 Minutes/No blow back
 2ND Open 30 Minutes/No blow /Flush tool/Didnt help
 2ND Shut In 60 Minutes/No blow back



PRESSURE SUMMARY

| Time (Min.) | Pressure (psia) | Temp (deg F) | Annotation |
|-------------|-----------------|--------------|----------------------|
| 0 | 2041.19 | 101.28 | Initial Hydro-static |
| 2 | 125.57 | 100.84 | Open To Flow (1) |
| 32 | 127.37 | 101.00 | Shut-In(1) |
| 92 | 1124.65 | 101.99 | End Shut-In(1) |
| 94 | 130.82 | 101.77 | Open To Flow (2) |
| 122 | 134.36 | 102.26 | Shut-In(2) |
| 182 | 1058.94 | 104.00 | End Shut-In(2) |
| 183 | 2019.26 | 104.30 | Final Hydro-static |

Recovery

| Length (ft) | Description | Volume (bbl) |
|-------------|----------------------|--------------|
| 10.00 | Slightly oil cut mud | 0.05 |
| 0.00 | Oil 2% Mud 98% | 0.00 |
| | | |
| | | |
| | | |

Gas Rates

| | Choke (inches) | Pressure (psia) | Gas Rate (Mcf/d) |
|--|----------------|-----------------|------------------|
| | | | |