



**TRILOBITE
TESTING, INC.**

DRILL STEM TEST REPORT

Ritchie Exploration Inc.
8100 E. 22nd st. N.
#700 Box 783188 Wichita Ks. 67278
ATTN: Ted Jochems

24 17s 35w Wichita Ks
Noonan #1
Job Ticket: 45597 **DST#: 1**
Test Start: 2012.04.04 @ 21:55:00

GENERAL INFORMATION:

Formation: **LKC-C,D,E**
Deviated: No Whipstock: ft (KB)
Time Tool Opened: 00:33:00
Time Test Ended: 05:38:30
Interval: **4097.00 ft (KB) To 4186.00 ft (KB) (TVD)**
Total Depth: 4186.00 ft (KB) (TVD)
Hole Diameter: 7.80 inches Hole Condition: Good
Test Type: Conventional Bottom Hole (Initial)
Tester: Chuck Kreuzer Jr.
Unit No: 61
Reference Elevations: 3184.00 ft (KB)
3174.00 ft (CF)
KB to GR/CF: 10.00 ft

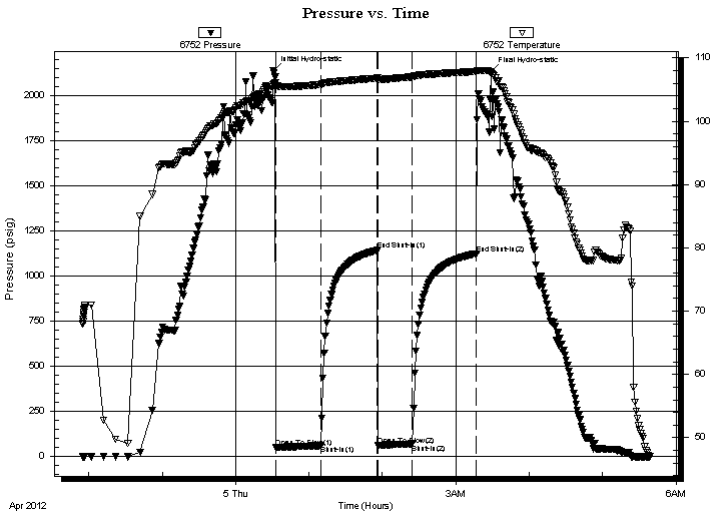
Serial #: 6752

Inside

Press@RunDepth: 69.11 psig @ 4103.60 ft (KB) Capacity: 8000.00 psig
Start Date: 2012.04.04 End Date: 2012.04.05 Last Calib.: 2012.04.05
Start Time: 21:55:05 End Time: 05:38:29 Time On Btm: 2012.04.05 @ 00:31:00
Time Off Btm: 2012.04.05 @ 03:29:00

TEST COMMENT: IF: Weak blow , Built to 1/2 in. over 30 mins.
IS: No blow back over 45 mins.
FF: No blow over 30 mins.
FS: No blow back over 45 mins.

PRESSURE SUMMARY



Time (Min.)	Pressure (psig)	Temp (deg F)	Annotation
0	2141.50	105.74	Initial Hydro-static
2	50.30	105.41	Open To Flow (1)
39	59.54	105.80	Shut-In(1)
85	1143.19	106.80	End Shut-In(1)
86	61.03	106.59	Open To Flow (2)
114	69.11	106.99	Shut-In(2)
166	1125.39	107.84	End Shut-In(2)
178	2135.94	107.66	Final Hydro-static

Recovery

Length (ft)	Description	Volume (bbl)
30.00	mud-100%	0.42

Gas Rates

Choke (inches)	Pressure (psig)	Gas Rate (Mcf/d)



**TRILOBITE
TESTING, INC.**

DRILL STEM TEST REPORT

FLUID SUMMARY

Ritchie Exploration Inc.

24 17s 35w Wichita Ks

8100 E. 22nd st. N.
#700 Box 783188 Wichita Ks. 67278

Noonan #1

Job Ticket: 45597

DST#: 1

ATTN: Ted Jochems

Test Start: 2012.04.04 @ 21:55:00

Mud and Cushion Information

Mud Type: Gel Chem

Cushion Type:

Oil API:

deg API

Mud Weight: 99.00 lb/gal

Cushion Length:

ft

Water Salinity:

ppm

Viscosity: 578.00 sec/qt

Cushion Volume:

bbbl

Water Loss: 7.99 in³

Gas Cushion Type:

Resistivity: ohm.m

Gas Cushion Pressure:

psig

Salinity: 4000.00 ppm

Filter Cake: 2.00 inches

Recovery Information

Recovery Table

Length ft	Description	Volume bbl
30.00	mud-100%	0.421

Total Length: 30.00 ft Total Volume: 0.421 bbl

Num Fluid Samples: 0

Num Gas Bombs: 0

Serial #:

Laboratory Name:

Laboratory Location:

Recovery Comments:

Serial #: 6752

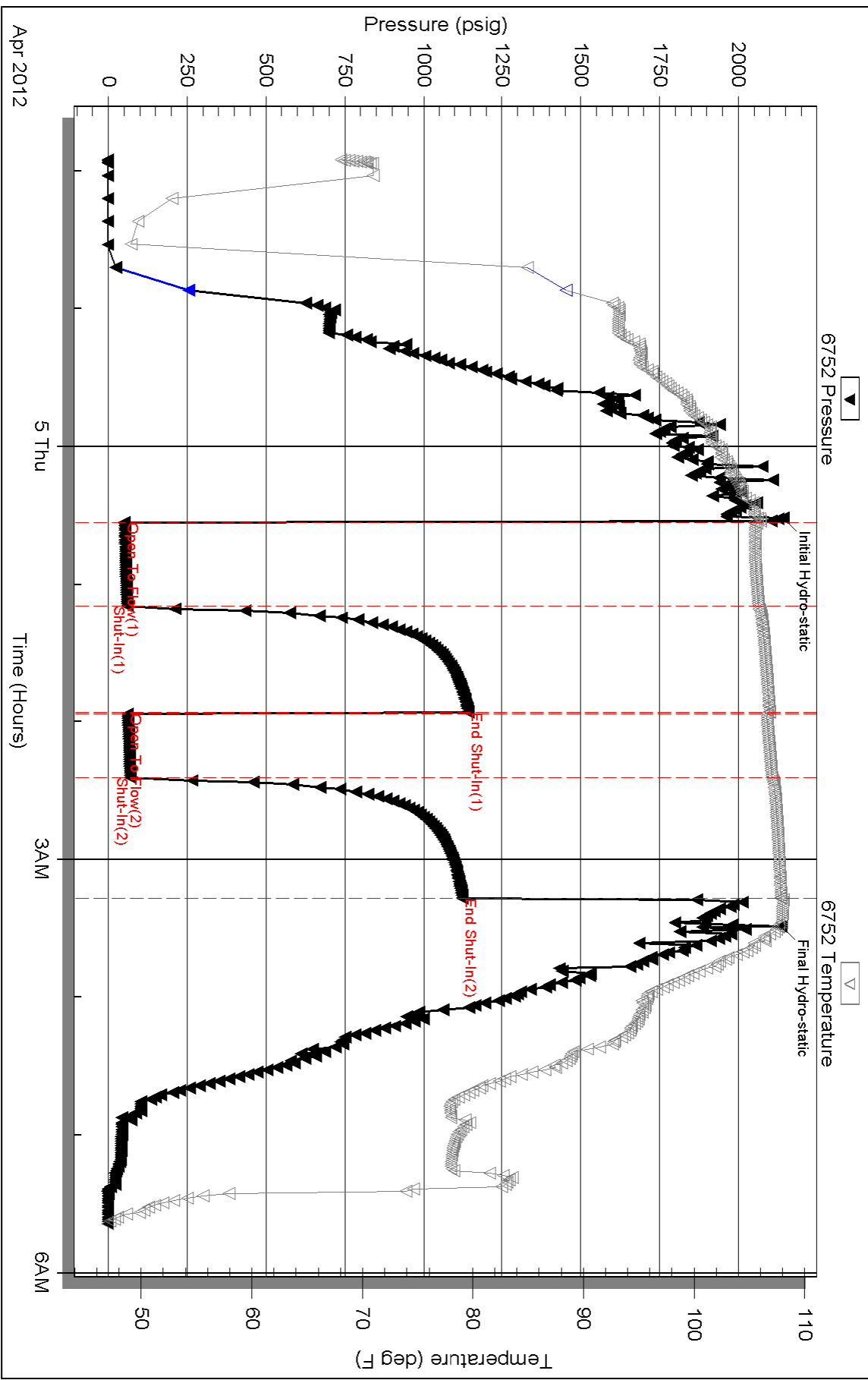
Inside

Richie Exploration Inc.

Noonan #1

DST Test Number: 1

Pressure vs. Time



Triobite Testing, Inc

Ref. No: 45597

Printed: 2012.04.05 @ 08:16:33