



**TRILOBITE  
TESTING, INC.**

# DRILL STEM TEST REPORT

Ritchie Exploration Inc.  
8100 E. 22nd st. N.  
#700 Box 783188 Wichita Ks. 67278  
ATTN: Ted Jochems

**24 17s 35w Wichita Ks**  
**Noonan #1**  
Job Ticket: 45940      **DST#: 6**  
Test Start: 2012.04.09 @ 07:55:00

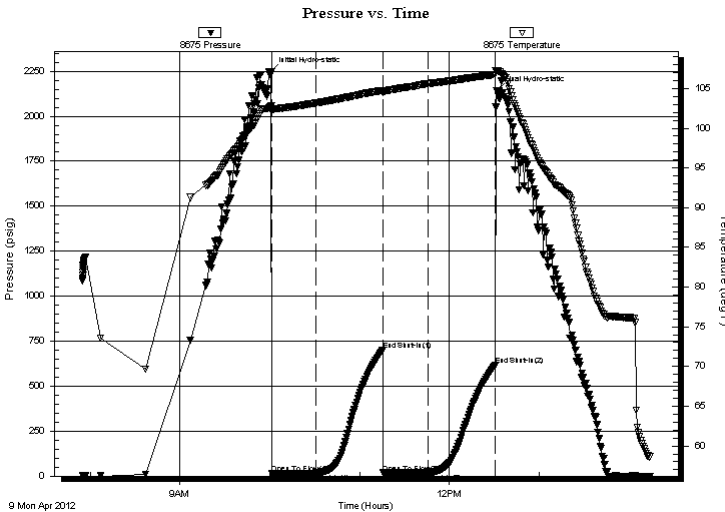
## GENERAL INFORMATION:

Formation: **Lower Altamont & Alt**  
Deviated: No Whipstock: ft (KB)  
Time Tool Opened: 10:01:15  
Time Test Ended: 14:14:15  
Interval: **4536.00 ft (KB) To 4565.00 ft (KB) (TVD)**  
Total Depth: 4565.00 ft (KB) (TVD)  
Hole Diameter: 7.80 inches Hole Condition: Good  
Test Type: Conventional Bottom Hole (Reset)  
Tester: Jace McKinney  
Unit No: 46  
Reference Elevations: 3184.00 ft (KB)  
3174.00 ft (CF)  
KB to GR/CF: 10.00 ft

**Serial #: 8675      Inside**  
Press @ Run Depth: 17.87 psig @ 4537.00 ft (KB)      Capacity: 8000.00 psig  
Start Date: 2012.04.09      End Date: 2012.04.09      Last Calib.: 2002.01.05  
Start Time: 07:55:01      End Time: 14:14:15      Time On Btm: 2012.04.09 @ 10:01:00  
Time Off Btm: 2012.04.09 @ 12:31:30

**TEST COMMENT:** Built to 1/4" blow  
No return blow  
Weak surface blow  
No return blow

## PRESSURE SUMMARY



Time (Min.)	Pressure (psig)	Temp (deg F)	Annotation
0	2249.52	102.76	Initial Hydro-static
1	15.75	102.12	Open To Flow (1)
30	16.95	103.16	Shut-In(1)
75	700.34	104.76	End Shut-In(1)
75	17.76	104.44	Open To Flow (2)
105	17.87	105.60	Shut-In(2)
150	615.58	106.75	End Shut-In(2)
151	2142.78	107.27	Final Hydro-static

## Recovery

Length (ft)	Description	Volume (bbl)
10.00	100% Mud w with few oil spots	0.14

\* Recovery from multiple tests

## Gas Rates

Choke (inches)	Pressure (psig)	Gas Rate (Mcf/d)



**TRILOBITE  
TESTING, INC.**

# DRILL STEM TEST REPORT

**FLUID SUMMARY**

Ritchie Exploration Inc.

**24 17s 35w Wichita Ks**

8100 E. 22nd st. N.  
#700 Box 783188 Wichita Ks. 67278

**Noonan #1**

Job Ticket: 45940

**DST#: 6**

ATTN: Ted Jochems

Test Start: 2012.04.09 @ 07:55:00

## Mud and Cushion Information

Mud Type: Gel Chem

Cushion Type:

Oil API:

deg API

Mud Weight: 9.00 lb/gal

Cushion Length:

ft

Water Salinity:

ppm

Viscosity: 56.00 sec/qt

Cushion Volume:

bbbl

Water Loss: 7.99 in<sup>3</sup>

Gas Cushion Type:

Resistivity: ohm.m

Gas Cushion Pressure:

psig

Salinity: 6700.00 ppm

Filter Cake: 1.00 inches

## Recovery Information

Recovery Table

Length ft	Description	Volume bbl
10.00	100% Mud with few oil spots	0.140

Total Length: 10.00 ft      Total Volume: 0.140 bbl

Num Fluid Samples: 0

Num Gas Bombs: 0

Serial #:

Laboratory Name:

Laboratory Location:

Recovery Comments:

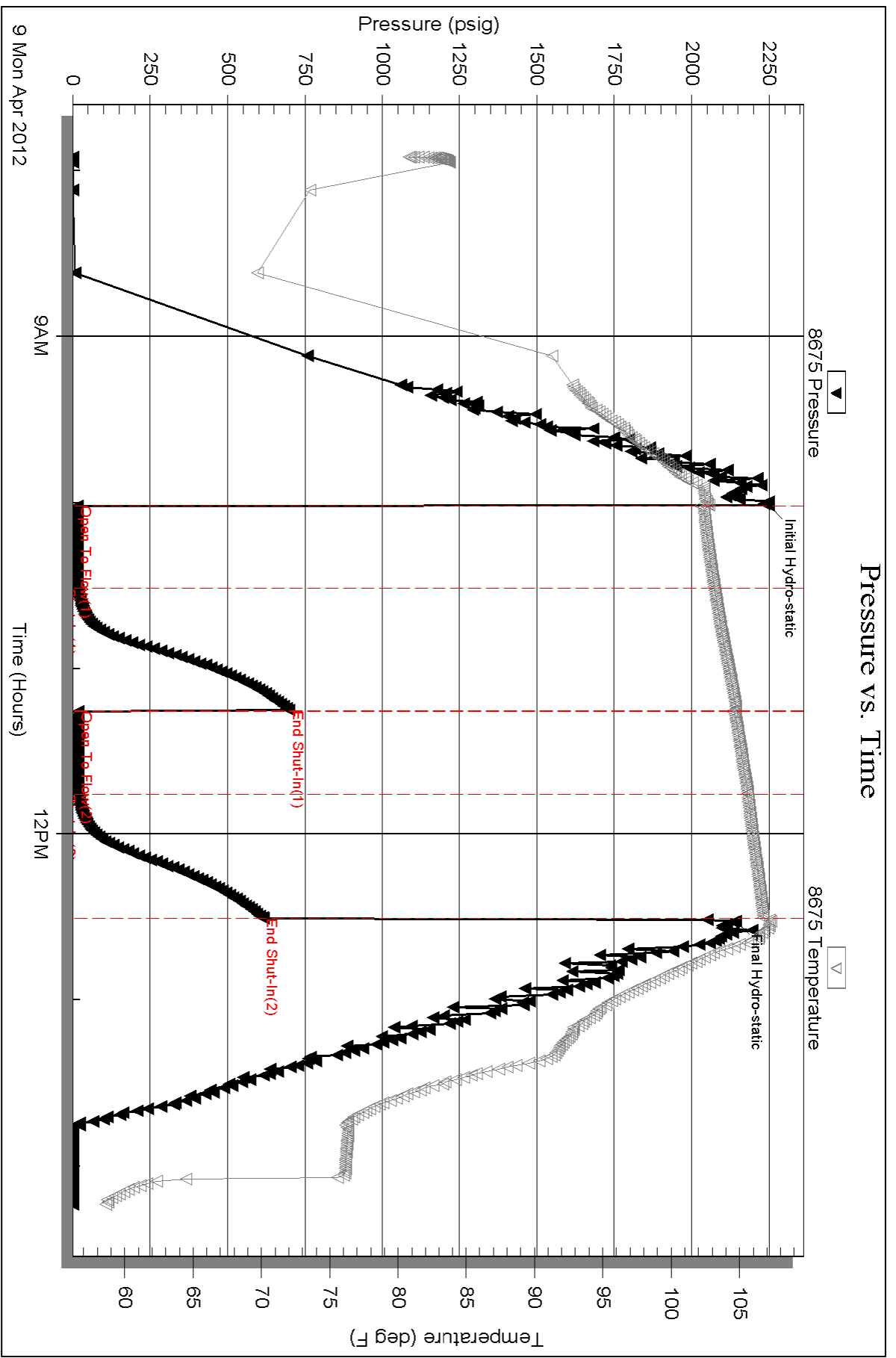
Serial #: 8675

Inside

Ritchie Exploration Inc.

Noonan #1

DST Test Number: 6



Triobite Testing, Inc

Ref. No: 45940

Printed: 2012.04.09 @ 14:46:24