



TRILOBITE TESTING, INC.

DRILL STEM TEST REPORT

Ritchie Exploration Inc.
 8100 E. 22nd st. N.
 #700 Box 783188 Wichita Ks. 67278
 ATTN: Ted Jochems

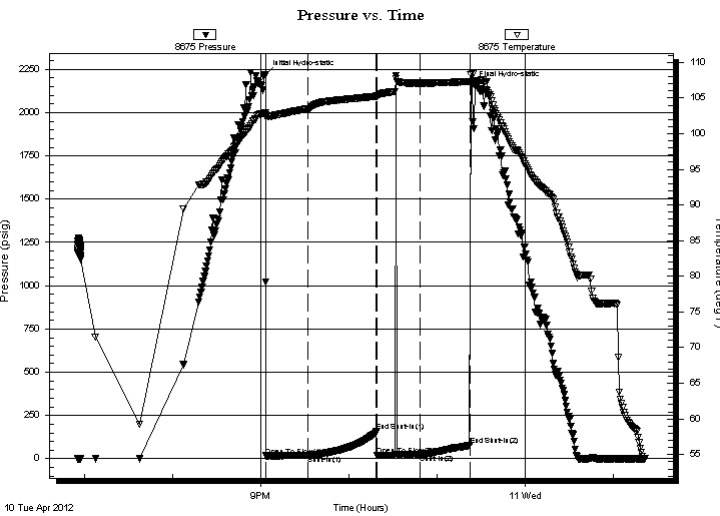
24 17s 35w Wichita Ks
Noonan #1
 Job Ticket: 45942 **DST#: 8**
 Test Start: 2012.04.10 @ 18:55:00

GENERAL INFORMATION:

Formation: **Pawnee-Myric Station**
 Deviated: No Whipstock: ft (KB)
 Time Tool Opened: 21:03:30
 Time Test Ended: 01:21:15
 Interval: **4592.00 ft (KB) To 4650.00 ft (KB) (TVD)**
 Total Depth: 4650.00 ft (KB) (TVD)
 Hole Diameter: 7.80 inches Hole Condition: Good
 Test Type: Conventional Bottom Hole (Reset)
 Tester: Jace McKinney
 Unit No: 46
 Reference Elevations: 3184.00 ft (KB)
 3174.00 ft (CF)
 KB to GR/CF: 10.00 ft

Serial #: 8675 Inside
 Press @ Run Depth: 24.76 psig @ 4593.00 ft (KB) Capacity: 8000.00 psig
 Start Date: 2012.04.10 End Date: 2012.04.11 Last Calib.: 2012.04.10
 Start Time: 18:55:01 End Time: 01:21:15 Time On Btm: 2012.04.10 @ 21:03:00
 Time Off Btm: 2012.04.10 @ 23:23:45

TEST COMMENT: Built to 3/4" blow
 No return blow
 Flushed tool. Weak surface blow
 No return blow



PRESSURE SUMMARY

Time (Min.)	Pressure (psig)	Temp (deg F)	Annotation
0	2219.71	102.95	Initial Hydro-static
1	16.75	102.37	Open To Flow (1)
29	19.39	103.45	Shut-In(1)
76	156.37	105.25	End Shut-In(1)
76	22.18	105.17	Open To Flow (2)
105	24.76	107.07	Shut-In(2)
140	76.99	107.33	End Shut-In(2)
141	2158.00	108.59	Final Hydro-static

Recovery

Length (ft)	Description	Volume (bbl)
25.00	100% Mud w ith oil scum	0.35
1.00	Free Oil	0.01

* Recovery from multiple tests

Gas Rates

Choke (inches)	Pressure (psig)	Gas Rate (Mcf/d)



**TRILOBITE
TESTING, INC.**

DRILL STEM TEST REPORT

FLUID SUMMARY

Ritchie Exploration Inc.

24 17s 35w Wichita Ks

8100 E. 22nd st. N.
#700 Box 783188 Wichita Ks. 67278

Noonan #1

Job Ticket: 45942

DST#: 8

ATTN: Ted Jochems

Test Start: 2012.04.10 @ 18:55:00

Mud and Cushion Information

Mud Type: Gel Chem

Cushion Type:

Oil API:

deg API

Mud Weight: 9.00 lb/gal

Cushion Length:

ft

Water Salinity:

ppm

Viscosity: 70.00 sec/qt

Cushion Volume:

bbbl

Water Loss: 9.58 in³

Gas Cushion Type:

Resistivity: ohm.m

Gas Cushion Pressure:

psig

Salinity: 9600.00 ppm

Filter Cake: 1.00 inches

Recovery Information

Recovery Table

Length ft	Description	Volume bbbl
25.00	100% Mud w ith oil scum	0.351
1.00	Free Oil	0.014

Total Length: 26.00 ft Total Volume: 0.365 bbl

Num Fluid Samples: 0

Num Gas Bombs: 0

Serial #:

Laboratory Name:

Laboratory Location:

Recovery Comments:

Serial #: 8675

Inside

Ritchie Exploration Inc.

Noonan #1

DST Test Number: 8

Pressure vs. Time

