



**TRILOBITE  
TESTING, INC.**

# DRILL STEM TEST REPORT

Ritchie Exploration INC

**Dave Williams**

Po Box 783188  
Wichita KS 67278

**Scott 25c#1**

Job Ticket: 47734

**DST#: 1**

ATTN:

Test Start: 2012.04.29 @ 16:49:15

## GENERAL INFORMATION:

Formation: **Altamont/ Pawnee**

Deviated: No Whipstock: ft (KB)

Time Tool Opened: 21:04:30

Time Test Ended: 02:13:00

Test Type: Conventional Bottom Hole (Initial)

Tester: Chris Staats

Unit No: 47

**Interval: 5110.00 ft (KB) To 5200.00 ft (KB) (TVD)**

Reference Elevations: 2601.00 ft (KB)

Total Depth: 5200.00 ft (KB) (TVD)

2590.00 ft (CF)

Hole Diameter: 7.88 inches Hole Condition: Fair

KB to GR/CF: 11.00 ft

**Serial #: 6773 Outside**

Press @ Run Depth: 85.76 psig @ 5111.00 ft (KB)

Capacity: 8000.00 psig

Start Date: 2012.04.29

End Date: 2012.04.30

Last Calib.: 2012.04.30

Start Time: 16:49:20

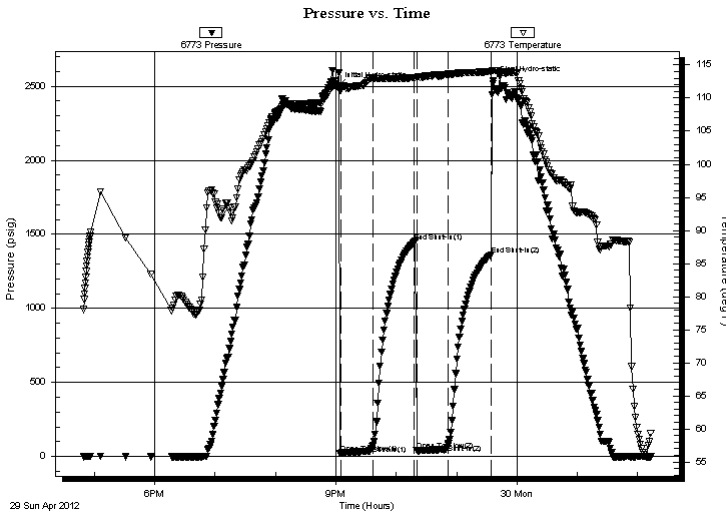
End Time: 02:13:00

Time On Btm: 2012.04.29 @ 21:01:45

Time Off Btm: 2012.04.29 @ 23:36:15

**TEST COMMENT:** IF: Weak blow 1 1/2"  
IS: No blow back  
FF: Weak surface blow  
FS: No blow back

## PRESSURE SUMMARY



Time (Min.)	Pressure (psig)	Temp (deg F)	Annotation
0	2495.31	111.88	Initial Hydro-static
3	22.99	111.19	Open To Flow (1)
35	74.29	113.00	Shut-In(1)
76	1446.64	113.07	End Shut-In(1)
79	40.97	113.06	Open To Flow (2)
110	85.76	113.60	Shut-In(2)
153	1362.72	114.00	End Shut-In(2)
155	2534.81	114.18	Final Hydro-static

## Recovery

Length (ft)	Description	Volume (bbl)
60.00	MUD with gas odor	0.84

## Gas Rates

	Choke (inches)	Pressure (psig)	Gas Rate (Mcf/d)



**TRILOBITE  
TESTING, INC.**

# DRILL STEM TEST REPORT

**FLUID SUMMARY**

Ritchie Exploration INC

**Dave Williams**

Po Box 783188  
Wichita KS 67278

**Scott 25c#1**

Job Ticket: 47734

**DST#: 1**

ATTN:

Test Start: 2012.04.29 @ 16:49:15

## Mud and Cushion Information

Mud Type: Gel Chem	Cushion Type:	Oil API:	deg API
Mud Weight: 9.00 lb/gal	Cushion Length: ft	Water Salinity:	ppm
Viscosity: 57.00 sec/qt	Cushion Volume: bbl		
Water Loss: 9.98 in <sup>3</sup>	Gas Cushion Type:		
Resistivity: 0.00 ohm.m	Gas Cushion Pressure: psig		
Salinity: 6400.00 ppm			
Filter Cake: 0.02 inches			

## Recovery Information

Recovery Table

Length ft	Description	Volume bbl
60.00	MUD with gas odor	0.842

Total Length: 60.00 ft      Total Volume: 0.842 bbl

Num Fluid Samples: 0

Num Gas Bombs: 0

Serial #:

Laboratory Name:

Laboratory Location:

Recovery Comments:

