



DRILL STEM TEST REPORT

Prepared For: **John Roy Evans Oil Co LLC**

405 4th St Box 385
Claffin KS 67525

ATTN: Jim Musgrove

Bieberle #9

32 17s 12w Barton,KS

Start Date: 2012.07.11 @ 07:25:00

End Date: 2012.07.11 @ 12:20:00

Job Ticket #: 49268 DST #: 1

Trilobite Testing, Inc

PO Box 362 Hays, KS 67601

ph: 785-625-4778 fax: 785-625-5620

Printed: 2012.08.02 @ 09:44:07

John Roy Evans Oil Co LLC
32 17s 12w Barton,KS
Bieberle #9
DST # 1
Arbuckle
2012.07.11



TRILOBITE TESTING, INC.

DRILL STEM TEST REPORT

John Roy Evans Oil Co LLC

32 17s 12w Barton, KS

405 4th St Box 385
Clafin KS 67525

Bieberle #9

Job Ticket: 49268

DST#: 1

ATTN: Jim Musgrove

Test Start: 2012.07.11 @ 07:25:00

GENERAL INFORMATION:

Formation: **Arbuckle**

Deviated: No Whipstock: 1818.00 ft (KB)

Time Tool Opened: 09:06:00

Time Test Ended: 12:20:00

Test Type: Conventional Bottom Hole (Initial)

Tester: Jim Svaty

Unit No: 59

Interval: 3331.00 ft (KB) To 3370.00 ft (KB) (TVD)

Reference Elevations: 1818.00 ft (KB)

Total Depth: 3370.00 ft (KB) (TVD)

1812.00 ft (CF)

Hole Diameter: 7.88 inches Hole Condition: Fair

KB to GR/CF: 6.00 ft

Serial #: 8369 Outside

Press @ Run Depth: 65.89 psig @ 3335.00 ft (KB)

Capacity: 8000.00 psig

Start Date: 2012.07.11

End Date:

2012.07.11

Last Calib.:

2012.07.11

Start Time: 07:25:05

End Time:

12:19:59

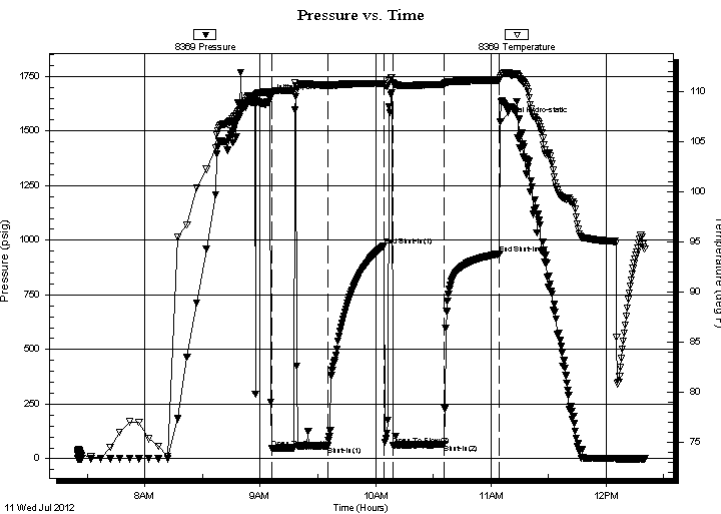
Time On Btm:

2012.07.11 @ 09:05:00

Time Off Btm:

2012.07.11 @ 11:05:00

TEST COMMENT: 30-IFP- Surface Blow Building to 4 1/2" Blow Died in 12 min Flushed 5" Blow
30-ISIP- No Blow
30-FFP- No Blow Flushed Good Surge No Blow
30-FSIP- No Blow



PRESSURE SUMMARY

Time (Min.)	Pressure (psig)	Temp (deg F)	Annotation
0	1646.37	110.02	Initial Hydro-static
1	49.13	109.77	Open To Flow (1)
30	59.22	110.66	Shut-In(1)
60	975.19	110.85	End Shut-In(1)
64	61.67	110.89	Open To Flow (2)
91	65.89	110.78	Shut-In(2)
120	938.56	111.17	End Shut-In(2)
120	1543.51	111.42	Final Hydro-static

Recovery

Length (ft)	Description	Volume (bbl)
2.00	OCM 40%o 60%m	0.03
38.00	Oil Speck Mud	0.53

Gas Rates

	Choke (inches)	Pressure (psig)	Gas Rate (Mcf/d)



**TRILOBITE
TESTING, INC.**

DRILL STEM TEST REPORT

TOOL DIAGRAM

John Roy Evans Oil Co LLC

32 17s 12w Barton,KS

405 4th St Box 385
Claflin KS 67525

Bieberle #9

Job Ticket: 49268

DST#: 1

ATTN: Jim Musgrove

Test Start: 2012.07.11 @ 07:25:00

Tool Information

Drill Pipe:	Length: 3329.00 ft	Diameter: 3.80 inches	Volume: 46.70 bbl	Tool Weight: 2500.00 lb
Heavy Wt. Pipe:	Length: 0.00 ft	Diameter: 2.75 inches	Volume: 0.00 bbl	Weight set on Packer: 25000.00 lb
Drill Collar:	Length: 0.00 ft	Diameter: 2.25 inches	Volume: 0.00 bbl	Weight to Pull Loose: 45000.00 lb
			<u>Total Volume: 46.70 bbl</u>	Tool Chased 0.00 ft
Drill Pipe Above KB:	18.00 ft			String Weight: Initial 38000.00 lb
Depth to Top Packer:	3331.00 ft			Final 38000.00 lb
Depth to Bottom Packer:	ft			
Interval between Packers:	39.00 ft			
Tool Length:	59.00 ft			
Number of Packers:	2	Diameter: 6.75 inches		

Tool Comments:

Tool Description	Length (ft)	Serial No.	Position	Depth (ft)	Accum. Lengths
------------------	-------------	------------	----------	------------	----------------

Change Over Sub	1.00			3312.00	
Shut In Tool	5.00			3317.00	
Hydraulic tool	5.00			3322.00	
Packer	4.00			3326.00	20.00 Bottom Of Top Packer
Packer	5.00			3331.00	
Stubb	1.00			3332.00	
Perforations	2.00			3334.00	
Change Over Sub	1.00			3335.00	
Recorder	0.00	8319	Inside	3335.00	
Recorder	0.00	8369	Outside	3335.00	
Blank Spacing	31.00			3366.00	
Change Over Sub	1.00			3367.00	
Bullnose	3.00			3370.00	39.00 Bottom Packers & Anchor

Total Tool Length: 59.00



**TRILOBITE
TESTING, INC.**

DRILL STEM TEST REPORT

FLUID SUMMARY

John Roy Evans Oil Co LLC

32 17s 12w Barton,KS

405 4th St Box 385
Claflin KS 67525

Bieberle #9

Job Ticket: 49268

DST#: 1

ATTN: Jim Musgrove

Test Start: 2012.07.11 @ 07:25:00

Mud and Cushion Information

Mud Type: Gel Chem

Cushion Type:

Oil API:

deg API

Mud Weight: 9.00 lb/gal

Cushion Length:

ft

Water Salinity:

ppm

Viscosity: 54.00 sec/qt

Cushion Volume:

bbbl

Water Loss: 8.77 in³

Gas Cushion Type:

Resistivity: ohm.m

Gas Cushion Pressure:

psig

Salinity: 6000.00 ppm

Filter Cake: inches

Recovery Information

Recovery Table

Length ft	Description	Volume bbbl
2.00	OCM 40%o 60%m	0.028
38.00	Oil Speck Mud	0.533

Total Length: 40.00 ft Total Volume: 0.561 bbl

Num Fluid Samples: 0

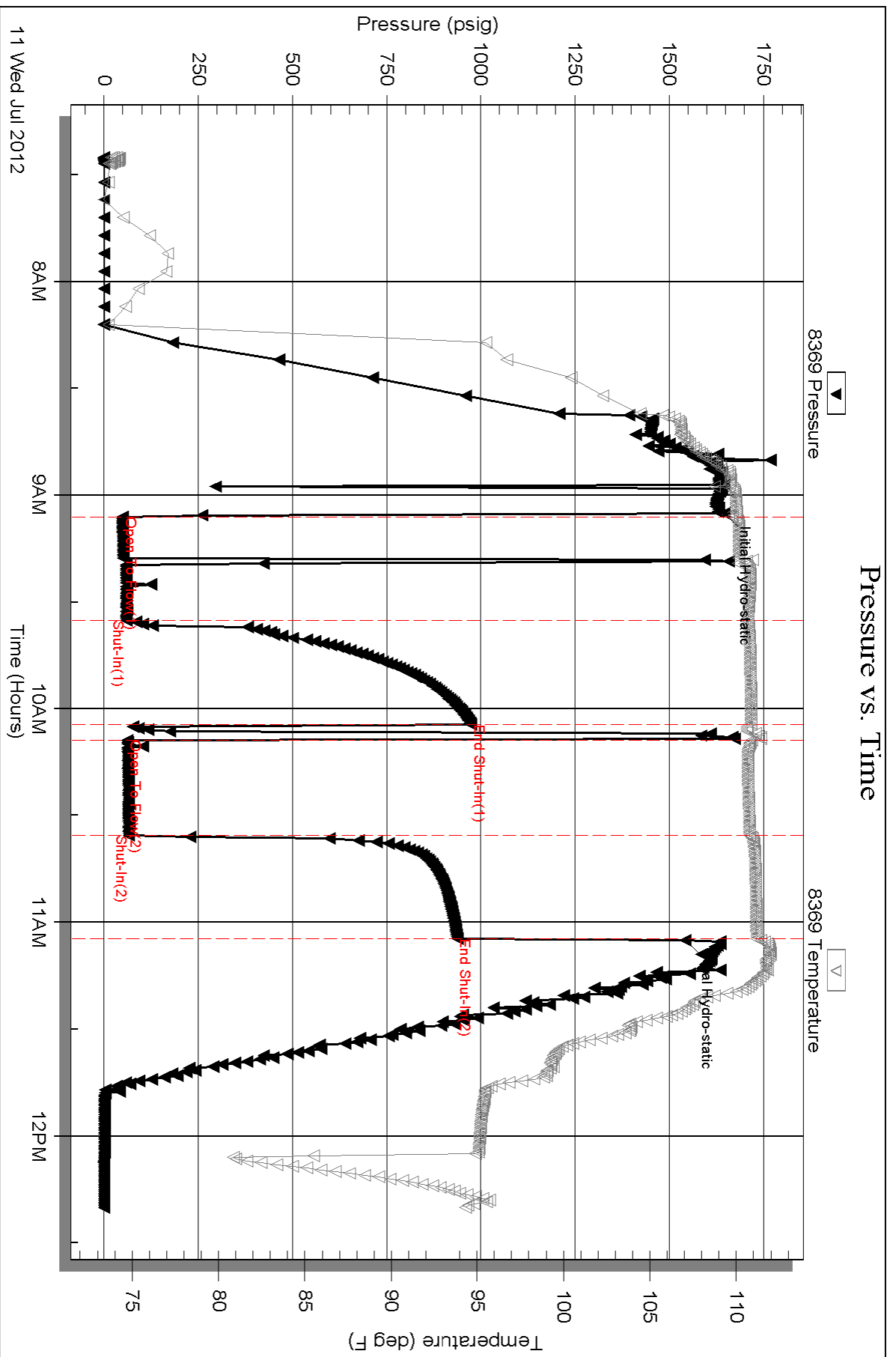
Num Gas Bombs: 0

Serial #:

Laboratory Name:

Laboratory Location:

Recovery Comments:



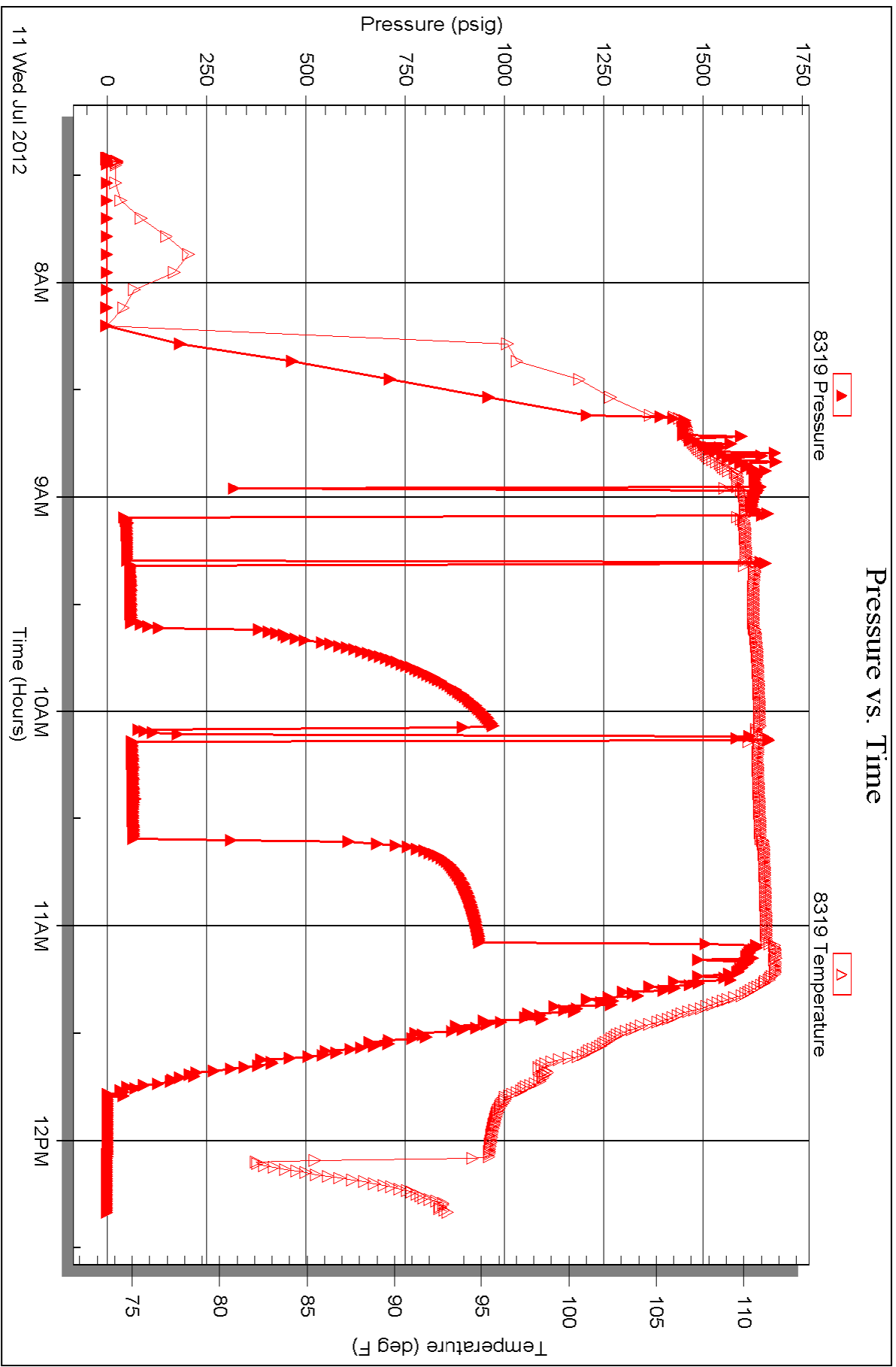
Serial #: 8319

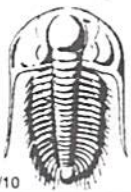
Inside

John Roy Evans Oil Co LLC

Bieberle #9

DST Test Number: 1





TRILOBITE TESTING INC.

P.O. Box 1733 • Hays, Kansas 67601

Test Ticket

NO. 49268

Well Name & No. Bieberle #9 Test No. 1 Date 7-11-12
 Company John Roy EVANS Oil Co, LLC Elevation 1818 KB 1812 GL
 Address 405 4th St Box 385 Claflin Ks, 67525
 Co. Rep / Geo. Jim Musgrove Rig Royal #2
 Location: Sec. 32 Twp. 17^s Rge. 12^w Co. BARTON State KS

Interval Tested 3331-3370 Zone Tested Arbuckle
 Anchor Length 39' Drill Pipe Run 3329 Mud Wt. 9.4
 Top Packer Depth 3326 Drill Collars Run 0 Vis 54
 Bottom Packer Depth 3331 Wt. Pipe Run 0 WL 8.8
 Total Depth 3370 Chlorides 6000 ppm System LCM TR.
 Blow Description IFP- 4 1/2" Blow Died 12m's Flushed 5in Blow
ISIP- No Blow
FFP- No Blow- Flushed- No Blow
FSIP- No Blow

Rec	Feet of	%gas	%oil	%water	%mud
<u>2</u>	<u>OCM</u>	<u>40</u>		<u>60</u>	
<u>38</u>	<u>Oil speck Mud</u>				

Rec Total 40 BHT 111 Gravity _____ API RW _____ @ _____ °F Chlorides _____ ppm

(A) Initial Hydrostatic 1646 Test 1150 T-On Location 06:50
 (B) First Initial Flow 49 Jars _____ T-Started 07:25
 (C) First Final Flow 59 Safety Joint _____ T-Open 09:05
 (D) Initial Shut-In 975 Circ Sub _____ T-Pulled 11:05
 (E) Second Initial Flow 61 Hourly Standby _____ T-Out 12:20
 (F) Second Final Flow 65 Mileage 112 RT 173.60 Comments _____
 (G) Final Shut-In 938 Sampler _____
 (H) Final Hydrostatic 1543 Straddle _____ Ruined Shale Packer _____
 Shale Packer _____ Ruined Packer _____
 Extra Packer _____ Extra Copies _____
 Initial Open 30 Extra Recorder _____ Sub Total 0
 Initial Shut-In 30 Day Standby _____ Total 1323.60
 Final Flow 30 Accessibility _____ MP/DST Disc't _____
 Final Shut-In 30 Sub Total 1323.60

Approved By _____ Our Representative Jim Musgrove
 Trilobite Testing Inc. shall not be liable for damaged of any kind of the property or personnel of the one for whom a test is made, or for any loss suffered or sustained, directly or indirectly, through the use of its equipment, or its statements or opinion concerning the results of any test, tools lost or damaged in the hole shall be paid for at cost by the party for whom the test is made.