

DRILL STEM TEST REPORT

Carrie Exploration & Development

10-22s-11w Stafford

210 West 22nd
Hays ,Kansas 67601

Sleeper #C-1

Job Ticket: 17317

DST#: 2

ATTN: Herb Deines

Test Start: 2012.08.03 @ 07:45:00

GENERAL INFORMATION:

Formation: **Simpso**

Deviated: No Whipstock: ft (KB)

Time Tool Opened: 09:58:30

Time Test Ended: 15:57:30

Test Type: Conventional Bottom Hole (Initial)

Tester: Gene Budig 59

Unit No: 3315

Interval: **3489.00 ft (KB) To 3546.00 ft (KB) (TVD)**

Reference Elevations: 1761.00 ft (KB)

Total Depth: 3650.00 ft (KB) (TVD)

1754.00 ft (CF)

Hole Diameter: 8.88 inches Hole Condition: Fair

KB to GR/CF: 7.00 ft

Serial #: 8405

Inside

Press@RunDepth: 113.52 psia @ 3540.02 ft (KB)

Capacity: 5000.00 psia

Start Date: 2012.08.03

End Date: 2012.08.03

Last Calib.: 1899.12.30

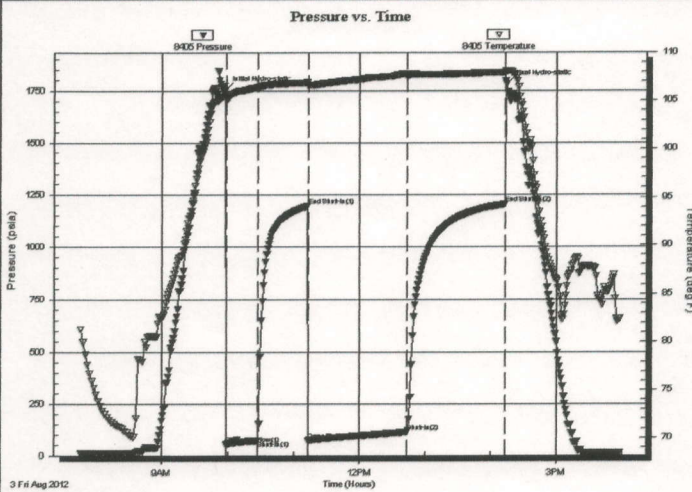
Start Time: 07:46:00

End Time: 15:57:30

Time On Btm: 2012.08.03 @ 09:57:30

Time Off Btm: 2012.08.03 @ 14:14:30

TEST COMMENT: 1st Opening 30 Minutes-Weak building blow built to 5 inches into the water
1st Shut-In 45 Minutes- No blow back
2nd Opening 90 Minutes-Weak building blow built to 14 inches into the water
2nd Shut-In 90 Minutes-No blow back



PRESSURE SUMMARY

Time (Min.)	Pressure (psia)	Temp (deg F)	Annotation
0	1752.11	105.53	Initial Hydro-static
1	54.73	105.25	Open To Flow (1)
30	71.08	106.35	Shut-In(1)
76	1196.67	106.84	End Shut-In(1)
76	73.31	106.49	Open To Flow (2)
167	113.52	107.61	Shut-In(2)
256	1205.41	107.92	End Shut-In(2)
257	1781.40	108.05	Final Hydro-static

Recovery

Length (ft)	Description	Volume (bbl)
145.00	Gas in the pipe	2.03
45.00	Oil and gas cut mud	0.63
0.00	10%Gas 10%Oil 10%Water 70%Mud	0.00
60.00	Oil and gas cut muddy water	0.84
0.00	5%Gas 10% Oil 25% Water 60%Mud	0.00
60.00	Mud 5% Oil 95Mud Chlorides 8500	0.84

Gas Rates

	Choke (inches)	Pressure (psia)	Gas Rate (Mcf/d)