



TRILOBITE TESTING, INC.

DRILL STEM TEST REPORT

Shakespeare Oil Co. Inc.

36-16s-34w Scott Co. KS

202 W Main St.
Salem IL 62881

Janzen #1-36

Job Ticket: 45905

DST#: 2

ATTN: Tim Priest

Test Start: 2012.06.19 @ 08:32:00

GENERAL INFORMATION:

Formation: **LKC " H "**

Deviated: No Whipstock: ft (KB)

Time Tool Opened: 10:44:40

Time Test Ended: 15:40:09

Test Type: Conventional Bottom Hole (Reset)

Tester: Will MacLean

Unit No: 40

Interval: 4211.00 ft (KB) To 4240.00 ft (KB) (TVD)

Reference Elevations: 3109.00 ft (KB)

Total Depth: 4240.00 ft (KB) (TVD)

3101.00 ft (CF)

Hole Diameter: 7.88 inches Hole Condition: Good

KB to GR/CF: 8.00 ft

Serial #: 8652

Inside

Press @ Run Depth: 310.20 psig @ 4212.00 ft (KB)

Capacity: 8000.00 psig

Start Date: 2012.06.19

End Date:

2012.06.19

Last Calib.:

2012.06.19

Start Time:

08:32:00

End Time:

15:40:09

Time On Btm:

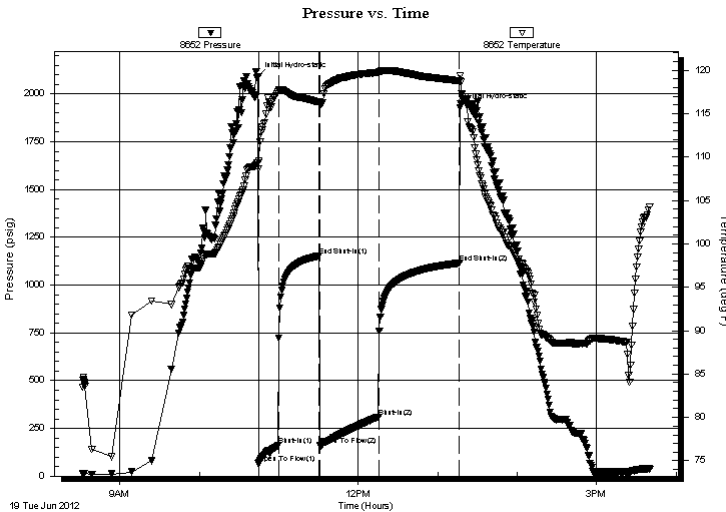
2012.06.19 @ 10:44:25

Time Off Btm:

2012.06.19 @ 13:16:39

TEST COMMENT: IF- Surface Blow Built to BOB in 10 1/4min
IS- No Blow
FF- Surface Blow Built to BOB in 12min
FS- No Blow

PRESSURE SUMMARY



Time (Min.)	Pressure (psig)	Temp (deg F)	Annotation
0	2092.64	109.38	Initial Hydro-static
1	65.19	108.67	Open To Flow (1)
16	160.01	117.51	Shut-In(1)
46	1152.52	116.40	End Shut-In(1)
47	159.90	116.11	Open To Flow (2)
91	310.20	119.73	Shut-In(2)
152	1115.68	118.81	End Shut-In(2)
153	1926.88	119.34	Final Hydro-static

Recovery

Length (ft)	Description	Volume (bbl)
305.00	MCW 7%m 93%w	3.17
183.00	MCW 17%m 83%w	2.57
122.00	WCM 48%w 52%m	1.71

* Recovery from multiple tests

Gas Rates

Choke (inches)	Pressure (psig)	Gas Rate (Mcf/d)



**TRILOBITE
TESTING, INC.**

DRILL STEM TEST REPORT

FLUID SUMMARY

Shakespeare Oil Co. Inc.

36-16s-34w Scott Co. KS

202 W Main St.
Salem IL 62881

Janzen #1-36

Job Ticket: 45905

DST#: 2

ATTN: Tim Priest

Test Start: 2012.06.19 @ 08:32:00

Mud and Cushion Information

Mud Type: Gel Chem

Cushion Type:

Oil API:

deg API

Mud Weight: 9.00 lb/gal

Cushion Length:

ft

Water Salinity:

28000 ppm

Viscosity: 51.00 sec/qt

Cushion Volume:

bbbl

Water Loss: 9.16 in³

Gas Cushion Type:

Resistivity: ohm.m

Gas Cushion Pressure:

psig

Salinity: 4200.00 ppm

Filter Cake: 1.00 inches

Recovery Information

Recovery Table

Length ft	Description	Volume bbbl
305.00	MCW 7% _m 93% _w	3.167
183.00	MCW 17% _m 83% _w	2.567
122.00	WCM 48% _w 52% _m	1.711

Total Length: 610.00 ft Total Volume: 7.445 bbl

Num Fluid Samples: 0

Num Gas Bombs: 0

Serial #:

Laboratory Name:

Laboratory Location:

Recovery Comments: RW is .164 @ 97f = 28000

Serial #: 8652

Inside

Shakespeare Oil Co. Inc.

Janzen #1-36

DST Test Number: 2

