



TRILOBITE TESTING, INC.

DRILL STEM TEST REPORT

Shakespeare Oil Co. Inc.

36-16s-34w Scott Co. KS

202 W Main St.
Salem IL 62881

Janzen #1-36

Job Ticket: 45907

DST#: 4

ATTN: Tim Priest

Test Start: 2012.06.20 @ 19:36:00

GENERAL INFORMATION:

Formation: **LKC " K "**

Deviated: No Whipstock: ft (KB)

Time Tool Opened: 21:19:10

Time Test Ended: 02:51:09

Test Type: Conventional Bottom Hole (Reset)

Tester: Will MacLean

Unit No: 40

Interval: 4310.00 ft (KB) To 4346.00 ft (KB) (TVD)

Reference Elevations: 3109.00 ft (KB)

Total Depth: 4150.00 ft (KB) (TVD)

3101.00 ft (CF)

Hole Diameter: 7.88 inches Hole Condition: Good

KB to GR/CF: 8.00 ft

Serial #: 8652

Inside

Press @ Run Depth: 236.66 psig @ 4311.00 ft (KB)

Capacity: 8000.00 psig

Start Date: 2012.06.20

End Date:

2012.06.21

Last Calib.:

2012.06.21

Start Time: 19:36:00

End Time:

02:51:09

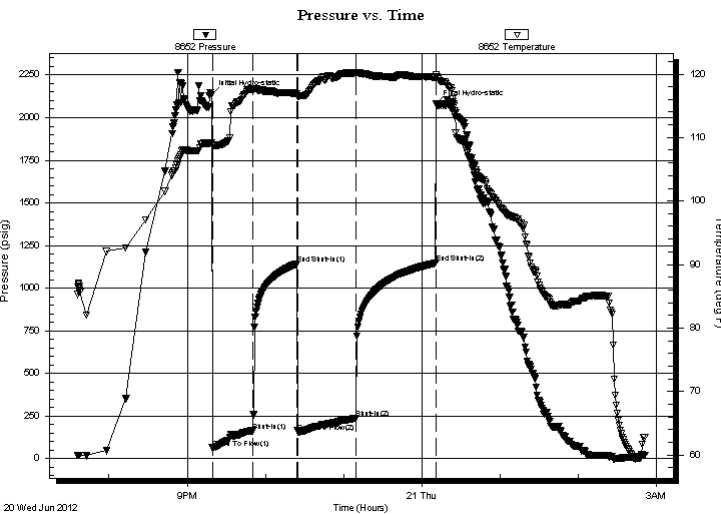
Time On Btm:

2012.06.20 @ 21:18:40

Time Off Btm:

2012.06.21 @ 00:10:54

TEST COMMENT: IF- Surface Blow Built to BOB in 21 1/2min
IS- No Blow
FF- Surface Blow Built to BOB in 43 1/4min
FS- No Blow



PRESSURE SUMMARY

Time (Min.)	Pressure (psig)	Temp (deg F)	Annotation
0	2134.90	109.20	Initial Hydro-static
1	64.19	108.72	Open To Flow (1)
32	163.33	117.66	Shut-In(1)
66	1142.76	116.93	End Shut-In(1)
67	158.07	116.40	Open To Flow (2)
111	236.66	120.15	Shut-In(2)
172	1146.75	119.48	End Shut-In(2)
173	2079.55	119.85	Final Hydro-static

Recovery

Length (ft)	Description	Volume (bbl)
122.00	MCW 8%w 92%w	0.60
183.00	MCW 24%w 76%w	2.57
111.00	WCM 20%w 80%w	1.56

* Recovery from multiple tests

Gas Rates

Choke (inches)	Pressure (psig)	Gas Rate (Mcf/d)



**TRILOBITE
TESTING, INC.**

DRILL STEM TEST REPORT

FLUID SUMMARY

Shakespeare Oil Co. Inc.

36-16s-34w Scott Co. KS

202 W Main St.
Salem IL 62881

Janzen #1-36

Job Ticket: 45907

DST#: 4

ATTN: Tim Priest

Test Start: 2012.06.20 @ 19:36:00

Mud and Cushion Information

Mud Type: Gel Chem

Cushion Type:

Oil API:

deg API

Mud Weight: 9.00 lb/gal

Cushion Length:

ft

Water Salinity:

52000 ppm

Viscosity: 54.00 sec/qt

Cushion Volume:

bbbl

Water Loss: 8.18 in³

Gas Cushion Type:

Resistivity: ohm.m

Gas Cushion Pressure:

psig

Salinity: 5700.00 ppm

Filter Cake: 1.00 inches

Recovery Information

Recovery Table

Length ft	Description	Volume bbbl
122.00	MCW 8%m 92%w	0.600
183.00	MCW 24%m 76%w	2.567
111.00	WCM 20%w 80%m	1.557

Total Length: 416.00 ft Total Volume: 4.724 bbl

Num Fluid Samples: 0

Num Gas Bombs: 0

Serial #:

Laboratory Name:

Laboratory Location:

Recovery Comments: RW is .162 @ 61f = 52000

Serial #: 8652

Inside

Shakespeare Oil Co. Inc.

Janzen #1-36

DST Test Number: 4

