



TRILOBITE TESTING, INC

DRILL STEM TEST REPORT

Shakespeare Oil Co. Inc.

36-16s-34w Scott Co. KS

202 W Main St.
Salem IL 62881

Janzen #1-36

Job Ticket: 45910

DST#: 7

ATTN: Tim Priest

Test Start: 2012.06.24 @ 08:38:00

GENERAL INFORMATION:

Formation: **Johnson**

Deviated: No Whipstock: ft (KB)

Time Tool Opened: 10:20:40

Time Test Ended: 16:10:39

Test Type: Conventional Bottom Hole (Reset)

Tester: Will MacLean

Unit No: 40

Interval: 4631.00 ft (KB) To 4725.00 ft (KB) (TVD)

Reference Elevations: 3109.00 ft (KB)

Total Depth: 4725.00 ft (KB) (TVD)

3101.00 ft (CF)

Hole Diameter: 7.88 inches Hole Condition: Good

KB to GR/CF: 8.00 ft

Serial #: 8360

Press @ Run Depth: 84.73 psig @ ft (KB)

Capacity: 8000.00 psig

Start Date: 2012.06.24

End Date:

2012.06.24

Last Calib.:

2012.06.24

Start Time: 08:38:00

End Time:

16:10:39

Time On Btm:

2012.06.24 @ 10:20:10

Time Off Btm:

2012.06.24 @ 13:39:24

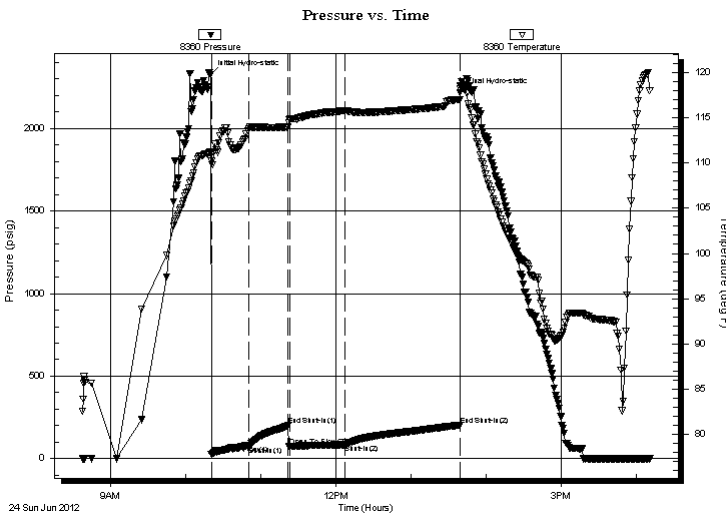
TEST COMMENT: IF- Surface Blow Built to 3 1/4"

IS- No Blow

FF- Weak Surface Blow Built to 1"

FS- No Blow

PRESSURE SUMMARY



Time (Min.)	Pressure (psig)	Temp (deg F)	Annotation
0	2326.02	111.15	Initial Hydro-static
1	25.92	110.19	Open To Flow (1)
31	72.80	113.79	Shut-In(1)
62	200.59	113.96	End Shut-In(1)
63	75.04	114.76	Open To Flow (2)
108	84.73	115.78	Shut-In(2)
199	202.95	116.97	End Shut-In(2)
200	2219.29	118.16	Final Hydro-static

Recovery

Length (ft)	Description	Volume (bbl)
122.00	OGCM 3%oil 9%g 88%m	0.60
30.00	GOCM 4%g 4%oil 92%m	0.42

* Recovery from multiple tests

Gas Rates

	Choke (inches)	Pressure (psig)	Gas Rate (Mcf/d)



**TRILOBITE
TESTING, INC**

DRILL STEM TEST REPORT

FLUID SUMMARY

Shakespeare Oil Co. Inc.

36-16s-34w Scott Co. KS

202 W Main St.
Salem IL 62881

Janzen #1-36

Job Ticket: 45910

DST#: 7

ATTN: Tim Priest

Test Start: 2012.06.24 @ 08:38:00

Mud and Cushion Information

Mud Type: Gel Chem

Cushion Type:

Oil API:

deg API

Mud Weight: 9.00 lb/gal

Cushion Length: ft

Water Salinity: ppm

Viscosity: 57.00 sec/qt

Cushion Volume: bbl

Water Loss: 9.59 in³

Gas Cushion Type:

Resistivity: ohm.m

Gas Cushion Pressure: psig

Salinity: 8000.00 ppm

Filter Cake: 1.00 inches

Recovery Information

Recovery Table

Length ft	Description	Volume bbl
122.00	OGCM 3%oil 9%g 88%m	0.600
30.00	GOCM 4%g 4%oil 92%m	0.421

Total Length: 152.00 ft Total Volume: 1.021 bbl

Num Fluid Samples: 0

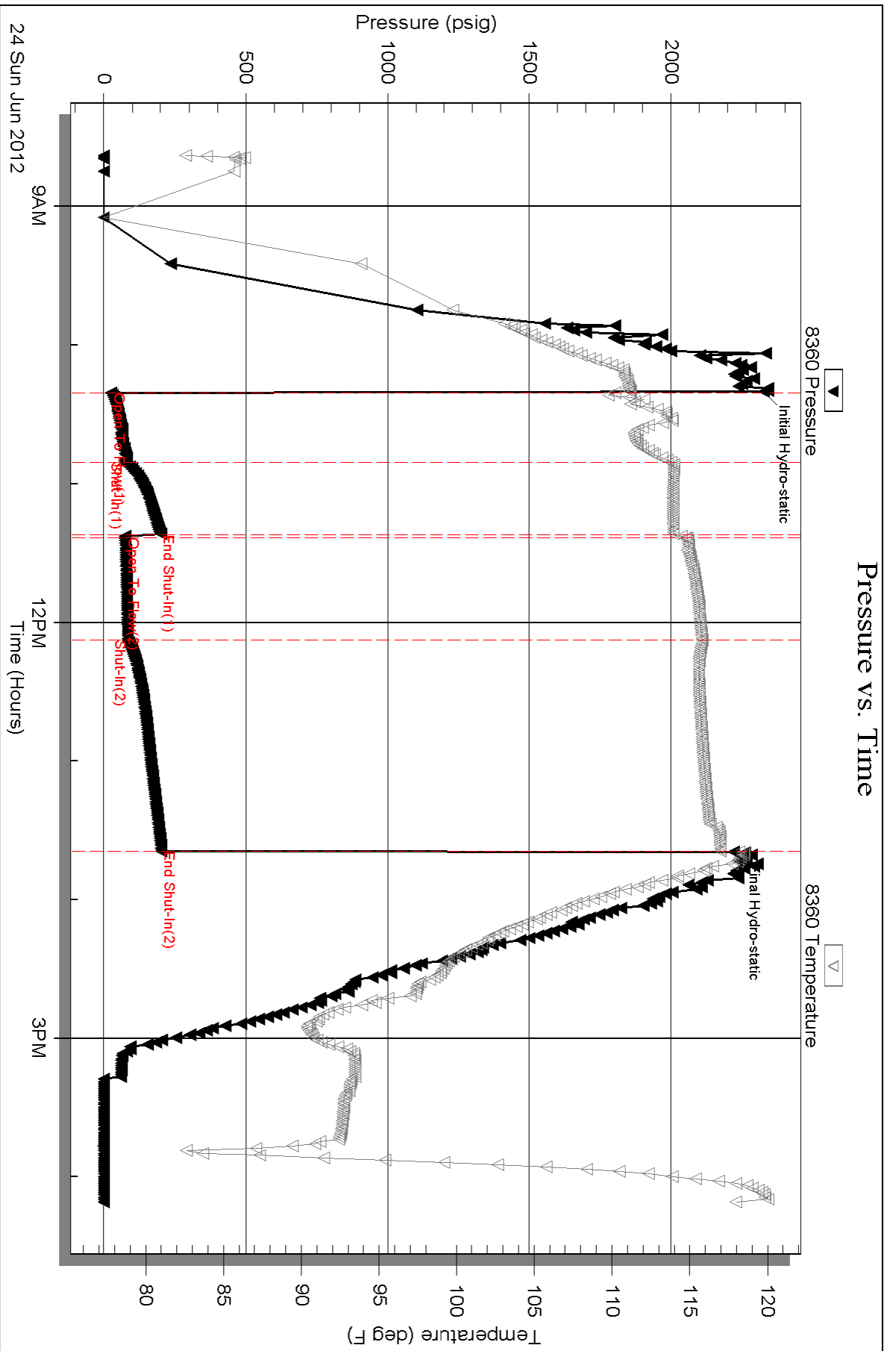
Num Gas Bombs: 0

Serial #:

Laboratory Name:

Laboratory Location:

Recovery Comments:



Serial #: 8322

Outside Shakespeare Oil Co. Inc.

Janzen #1-36

DST Test Number: 7

