



**TRILOBITE  
TESTING, INC.**

# DRILL STEM TEST REPORT

Credo Petroleum Corp

**22 17s 29w Lane**

1801 Broadway Ste 900  
Denver CO 80202

**Laruenti # 1-22**

ATTN: Charlie Sturdavant

Job Ticket: 46928

**DST#: 3**

Test Start: 2012.06.18 @ 12:55:00

## GENERAL INFORMATION:

Formation: **Pawnee & Fort Scott**

Deviated: No Whipstock: 2814.00 ft (KB)

Time Tool Opened: 15:03:45

Time Test Ended: 21:31:00

Test Type: Conventional Bottom Hole (Reset)

Tester: Jim Svaty

Unit No: 55

**Interval: 4390.00 ft (KB) To 4490.00 ft (KB) (TVD)**

Reference Elevations: 2814.00 ft (KB)

Total Depth: 4490.00 ft (KB) (TVD)

2804.00 ft (CF)

Hole Diameter: 7.88 inches Hole Condition: Fair

KB to GR/CF: 10.00 ft

**Serial #: 6667 Outside**

Press @ Run Depth: 82.39 psig @ 4391.00 ft (KB)

Capacity: 8000.00 psig

Start Date: 2012.06.18

End Date: 2012.06.18

Last Calib.: 2012.06.18

Start Time: 12:55:15

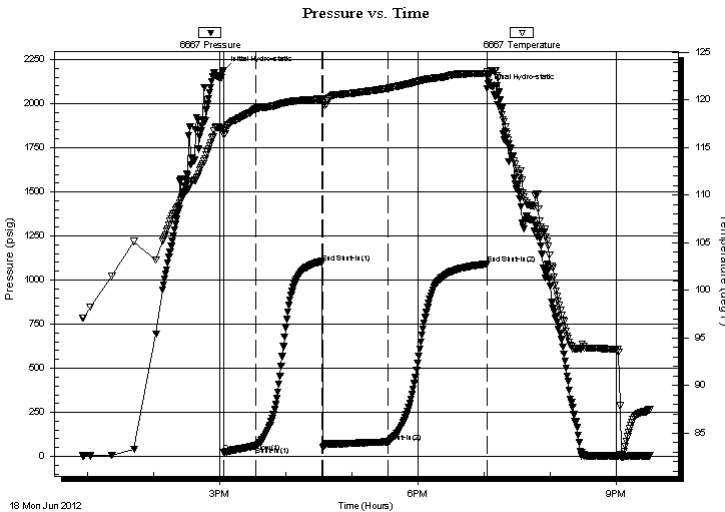
End Time: 21:31:30

Time On Btm: 2012.06.18 @ 15:03:15

Time Off Btm: 2012.06.18 @ 19:03:00

**TEST COMMENT:** 30-IFP- Surface Blow Building to 3in  
60-ISIP- No Blow  
60-FFP- 5 1/2in Blow in 3min Building to BOB in 48min  
90-FSIP- Surface Blow Died in 5min

## PRESSURE SUMMARY



Time (Min.)	Pressure (psig)	Temp (deg F)	Annotation
0	2188.73	116.92	Initial Hydro-static
1	22.17	116.35	Open To Flow (1)
30	60.12	119.11	Shut-In(1)
90	1097.47	120.11	End Shut-In(1)
91	53.81	119.74	Open To Flow (2)
150	82.39	121.24	Shut-In(2)
240	1091.13	122.78	End Shut-In(2)
240	2087.07	122.94	Final Hydro-static

## Recovery

Length (ft)	Description	Volume (bbl)
117.00	OCM 20%o 80%m	0.58
40.00	OCM 25%o 75%m	0.56
0.00	260' GIP	0.00

\* Recovery from multiple tests

## Gas Rates

	Choke (inches)	Pressure (psig)	Gas Rate (Mcf/d)



**TRILOBITE  
TESTING, INC.**

# DRILL STEM TEST REPORT

**FLUID SUMMARY**

Credo Petroleum Corp

**22 17s 29w Lane**

1801 Broadway Ste 900  
Denver CO 80202

**Laruenti # 1-22**

Job Ticket: 46928

**DST#: 3**

ATTN: Charlie Sturdavant

Test Start: 2012.06.18 @ 12:55:00

## Mud and Cushion Information

Mud Type: Gel Chem

Cushion Type:

Oil API:

deg API

Mud Weight: 10.00 lb/gal

Cushion Length:

ft

Water Salinity:

ppm

Viscosity: 50.00 sec/qt

Cushion Volume:

bbbl

Water Loss: 11.96 in<sup>3</sup>

Gas Cushion Type:

Resistivity: ohm.m

Gas Cushion Pressure:

psig

Salinity: 3200.00 ppm

Filter Cake: inches

## Recovery Information

Recovery Table

Length ft	Description	Volume bbbl
117.00	OCM 20%o 80%m	0.575
40.00	OCM 25%o 75%m	0.561
0.00	260' GIP	0.000

Total Length: 157.00 ft      Total Volume: 1.136 bbl

Num Fluid Samples: 0

Num Gas Bombs: 0

Serial #:

Laboratory Name:

Laboratory Location:

Recovery Comments:

Serial #: 6667

Outside Credo Petroleum Corp

Laruenti # 1-22

DST Test Number: 3

