



**TRILOBITE TESTING, INC.**

# DRILL STEM TEST REPORT

Samuel Gary Jr & Assoc Inc

**16-12s-16w Ellis**

1515 Wynkoop  
Ste 700  
Denver Co 80202  
ATTN: Clayton Camozzi

**Glassman #1-16**

Job Ticket: 47153      **DST#: 1**  
Test Start: 2012.05.15 @ 14:20:55

## GENERAL INFORMATION:

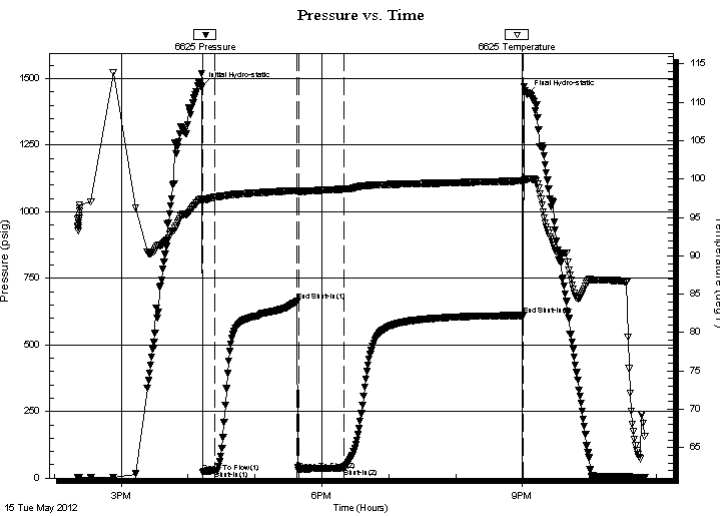
Formation: **LKC A-C**  
 Deviated: No Whipstock:                      ft (KB)  
 Time Tool Opened: 16:13:20  
 Time Test Ended: 22:49:19  
 Interval: **3137.00 ft (KB) To 3195.00 ft (KB) (TVD)**  
 Total Depth: 3195.00 ft (KB) (TVD)  
 Hole Diameter: 7.85 inches Hole Condition: Fair  
 Test Type: Conventional Bottom Hole (Initial)  
 Tester: Ray Schwager  
 Unit No: 42  
 Reference Elevations: 1945.00 ft (KB)  
 1937.00 ft (CF)  
 KB to GR/CF: 8.00 ft

## Serial #: 6625

Inside

Press @ Run Depth: 38.57 psig @ 3139.00 ft (KB)      Capacity: 8000.00 psig  
 Start Date: 2012.05.15      End Date: 2012.05.15      Last Calib.: 2012.05.15  
 Start Time: 14:20:55      End Time: 22:49:19      Time On Btm: 2012.05.15 @ 16:11:50  
 Time Off Btm: 2012.05.15 @ 21:04:19

TEST COMMENT: 10-IFP-surface to 1/8"bl  
 75-ISIP-no bl  
 40-FFP-w k bl 1"to 2 1/4"bl  
 160-FSIP-no bl



## PRESSURE SUMMARY

Time (Min.)	Pressure (psig)	Temp (deg F)	Annotation
0	1467.94	97.37	Initial Hydro-static
2	23.00	97.30	Open To Flow (1)
12	28.81	97.65	Shut-In(1)
86	664.76	98.52	End Shut-In(1)
87	30.00	98.38	Open To Flow (2)
128	38.57	98.70	Shut-In(2)
289	610.64	99.76	End Shut-In(2)
293	1438.94	99.99	Final Hydro-static

## Recovery

Length (ft)	Description	Volume (bbl)
0.00	80'GIP	0.00
45.00	O&GCM 5%G15%O80%M	0.36

## Gas Rates

Choke (inches)	Pressure (psig)	Gas Rate (Mcf/d)





**TRILOBITE  
TESTING, INC.**

# DRILL STEM TEST REPORT

## FLUID SUMMARY

Samuel Gary Jr & Assoc Inc

**16-12s-16w Ellis**

1515 Wynkoop  
Ste 700  
Denver Co 80202  
ATTN: Clayton Camozzi

**Glassman #1-16**

Job Ticket: 47153

**DST#: 1**

Test Start: 2012.05.15 @ 14:20:55

### Mud and Cushion Information

Mud Type: Gel Chem

Cushion Type:

Oil API:

40 deg API

Mud Weight: 9.00 lb/gal

Cushion Length:

ft

Water Salinity:

ppm

Viscosity: 48.00 sec/qt

Cushion Volume:

bbbl

Water Loss: 7.96 in<sup>3</sup>

Gas Cushion Type:

Resistivity: ohm.m

Gas Cushion Pressure:

psig

Salinity: 2000.00 ppm

Filter Cake: 1.00 inches

### Recovery Information

Recovery Table

Length ft	Description	Volume bbbl
0.00	80'GIP	0.000
45.00	O&GCM 5%G15%O80%M	0.358

Total Length: 45.00 ft      Total Volume: 0.358 bbl

Num Fluid Samples: 0

Num Gas Bombs: 0

Serial #:

Laboratory Name:

Laboratory Location:

Recovery Comments: Sampler Data: PSI 150# 100ML Gas 500MLOIL 1400MLMud

Serial #: 6625

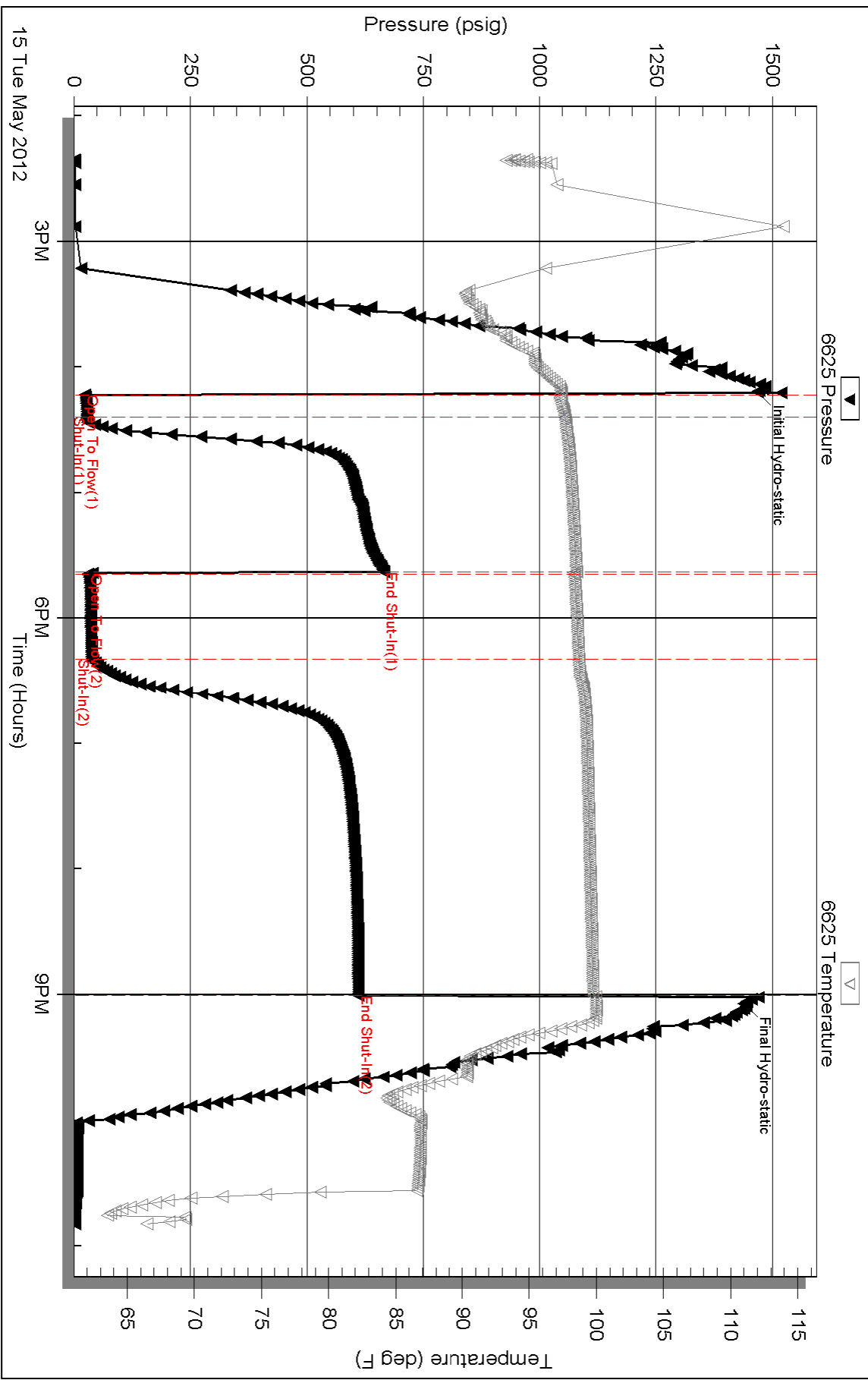
Inside

Samuel Gary Jr & Assoc Inc

Glassman #1-16

DST Test Number: 1

### Pressure vs. Time



Triobite Testing, Inc

Ref. No: 47153

Printed: 2012.05.16 @ 07:56:09

Serial #: 8374

Fluid

Samuel Gary Jr & Assoc Inc

Glassman #1-16

DST Test Number: 1

