



DRILL STEM TEST REPORT

Prepared For: **Hartman Oil Co. Inc.**

10500 Berkeley SQ Pkway STE 100
Wichita KS 67206

ATTN: Kitt Noah

Doris Green #4

19-21s-33w-Finney,KS

Start Date: 2012.07.25 @ 00:57:35

End Date: 2012.07.25 @ 09:05:05

Job Ticket #: 48963 DST #: 1

Trilobite Testing, Inc
PO Box 362 Hays, KS 67601
ph: 785-625-4778 fax: 785-625-5620

Printed: 2012.07.31 @ 15:22:03



TRILOBITE TESTING, INC.

DRILL STEM TEST REPORT

Hartman Oil Co. Inc.
 10500 Berkeley SQ Pkway STE 100
 Wichita KS 67206
 ATTN: Kitt Noah

19-21s-33w-Finney,KS
Doris Green #4
 Job Ticket: 48963 **DST#: 1**
 Test Start: 2012.07.25 @ 00:57:35

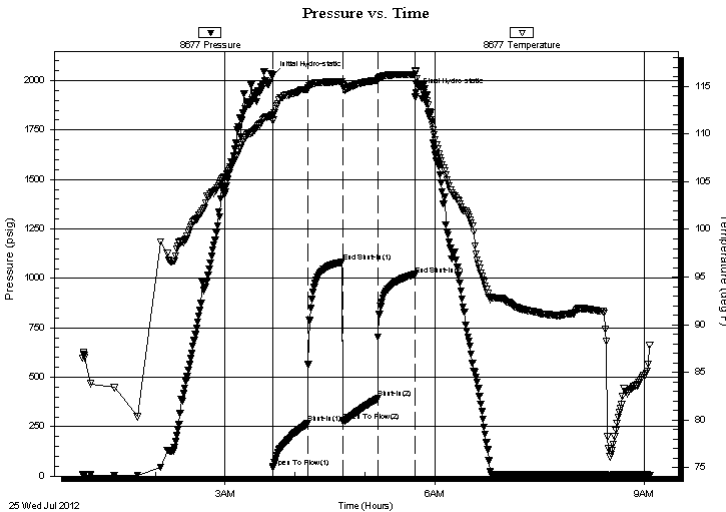
GENERAL INFORMATION:

Formation: **LKC "K"**
 Deviated: No Whipstock: ft (KB)
 Test Type: Conventional Bottom Hole (Initial)
 Time Tool Opened: 03:41:05 Tester: Tate Lang
 Time Test Ended: 09:05:05 Unit No: 53
 Interval: **4150.00 ft (KB) To 4200.00 ft (KB) (TVD)** Reference Elevations: 2924.00 ft (KB)
 Total Depth: 4200.00 ft (KB) (TVD) ft (CF)
 Hole Diameter: 7.88 inches Hole Condition: Good KB to GR/CF: ft

Serial #: 8677 Inside
 Press @ Run Depth: 392.75 psig @ 4164.00 ft (KB) Capacity: 8000.00 psig
 Start Date: 2012.07.25 End Date: 2012.07.25 Last Calib.: 2012.07.25
 Start Time: 00:57:40 End Time: 09:05:04 Time On Btm: 2012.07.25 @ 03:40:50
 Time Off Btm: 2012.07.25 @ 05:43:35

TEST COMMENT: IF-BOB 6 mins
 ISI-Dead No Blow Back
 FF-BOB 8 mins
 FSI-Dead No Blow Back

PRESSURE SUMMARY



Time (Min.)	Pressure (psig)	Temp (deg F)	Annotation
0	2027.50	112.01	Initial Hydro-static
1	42.86	111.36	Open To Flow (1)
31	268.69	114.69	Shut-In(1)
60	1082.10	115.48	End Shut-In(1)
61	276.21	115.18	Open To Flow (2)
91	392.75	115.65	Shut-In(2)
123	1017.59	116.27	End Shut-In(2)
123	1940.14	116.55	Final Hydro-static

Recovery

Length (ft)	Description	Volume (bbl)
403.00	10%G 5%M 85%O	3.46
186.00	35%G 10%M 55%O	2.61
124.00	20%M 80%O	1.74
124.00	20%W 40%M 40%O	1.74
72.00	30%M 70%O	1.01

Gas Rates

Choke (inches)	Pressure (psig)	Gas Rate (Mcf/d)
----------------	-----------------	------------------



**TRILOBITE
TESTING, INC.**

DRILL STEM TEST REPORT

TOOL DIAGRAM

Hartman Oil Co. Inc.

19-21s-33w-Finney,KS

10500 Berkeley SQ Pkw ay STE 100
Wichita KS 67206

Doris Green #4

Job Ticket: 48963

DST#: 1

ATTN: Kitt Noah

Test Start: 2012.07.25 @ 00:57:35

Tool Information

Drill Pipe:	Length: 3897.00 ft	Diameter: 3.80 inches	Volume: 54.66 bbl	Tool Weight: 20000.00 lb
Heavy Wt. Pipe:	Length: 0.00 ft	Diameter: 2.75 inches	Volume: 0.00 bbl	Weight set on Packer: 25000.00 lb
Drill Collar:	Length: 241.00 ft	Diameter: 2.25 inches	Volume: 1.19 bbl	Weight to Pull Loose: 70000.00 lb
			<u>Total Volume: 55.85 bbl</u>	Tool Chased 0.00 ft
Drill Pipe Above KB:	8.00 ft			String Weight: Initial 65000.00 lb
Depth to Top Packer:	4150.00 ft			Final 68000.00 lb
Depth to Bottom Packer:	ft			
Interval between Packers:	50.00 ft			
Tool Length:	70.00 ft			
Number of Packers:	2	Diameter: 6.75 inches		

Tool Comments:

Tool Description

Tool Description	Length (ft)	Serial No.	Position	Depth (ft)	Accum. Lengths
Change Over Sub	1.00			4131.00	
Shut In Tool	5.00			4136.00	
Hydraulic tool	5.00			4141.00	
Packer	5.00			4146.00	20.00 Bottom Of Top Packer
Packer	4.00			4150.00	
Stubb	1.00			4151.00	
Perforations	13.00			4164.00	
Recorder	0.00	8677	Inside	4164.00	
Recorder	0.00	8522	Outside	4164.00	
Change Over Sub	1.00			4165.00	
Drill Pipe	31.00			4196.00	
Change Over Sub	1.00			4197.00	
Bullnose	3.00			4200.00	50.00 Bottom Packers & Anchor

Total Tool Length: 70.00



**TRILOBITE
TESTING, INC.**

DRILL STEM TEST REPORT

FLUID SUMMARY

Hartman Oil Co. Inc.
10500 Berkeley SQ Pkw ay STE 100
Wichita KS 67206
ATTN: Kitt Noah

19-21s-33w-Finney,KS
Doris Green #4
Job Ticket: 48963 **DST#: 1**
Test Start: 2012.07.25 @ 00:57:35

Mud and Cushion Information

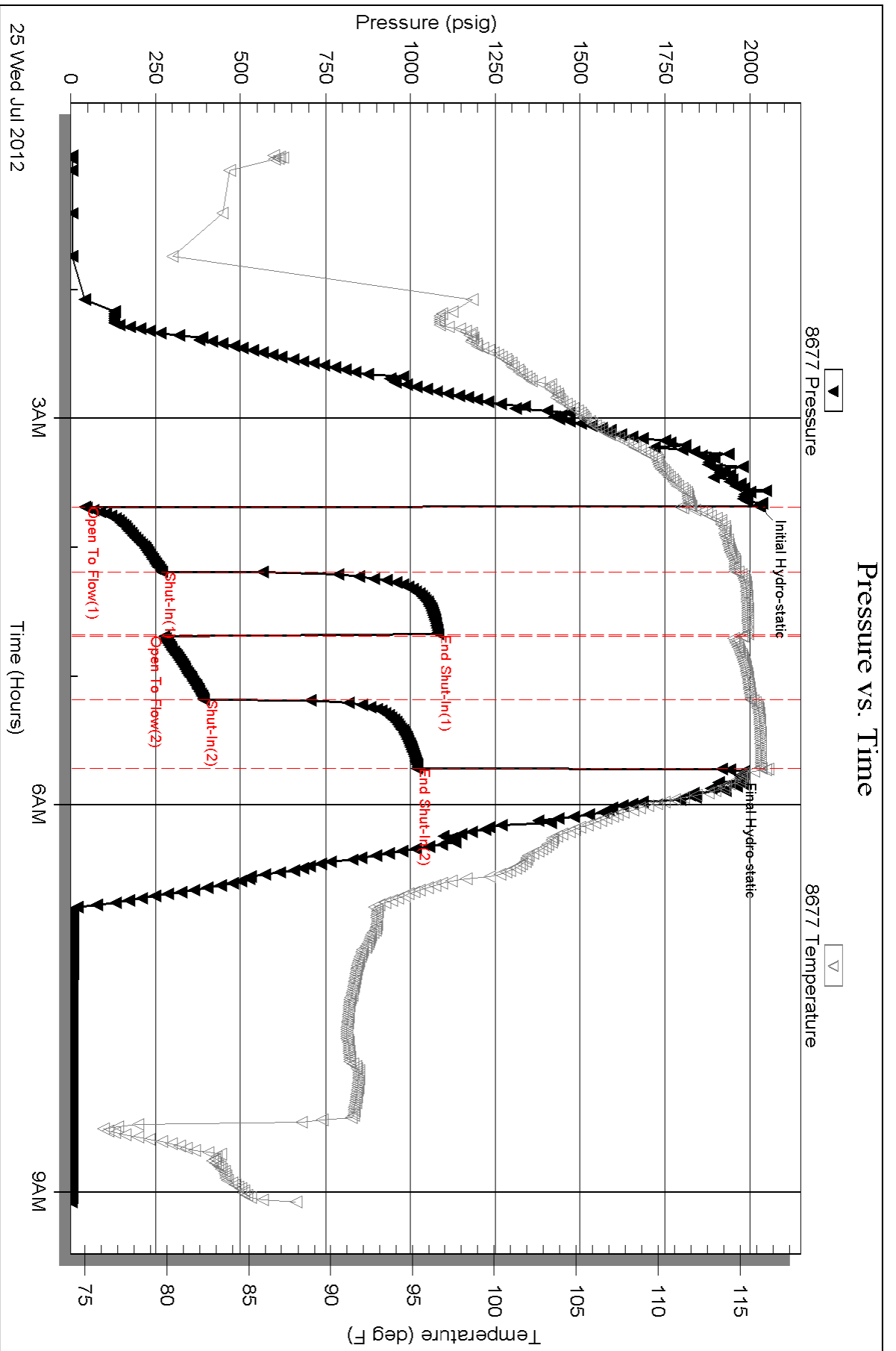
Mud Type: Gel Chem	Cushion Type:	Oil API:	deg API
Mud Weight: 9.00 lb/gal	Cushion Length: ft	Water Salinity:	ppm
Viscosity: 47.00 sec/qt	Cushion Volume: bbl		
Water Loss: 7.96 in ³	Gas Cushion Type:		
Resistivity: ohm.m	Gas Cushion Pressure: psig		
Salinity: 2000.00 ppm			
Filter Cake: inches			

Recovery Information

Recovery Table

Length ft	Description	Volume bbl
403.00	10%G 5%M 85%O	3.458
186.00	35%G 10%M 55%O	2.609
124.00	20%M 80%O	1.739
124.00	20%W 40%M 40%O	1.739
72.00	30%M 70%O	1.010

Total Length: 909.00 ft Total Volume: 10.555 bbl
 Num Fluid Samples: 0 Num Gas Bombs: 0 Serial #:
 Laboratory Name: Laboratory Location:
 Recovery Comments:



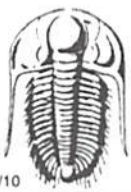
Serial #: 8522

Outside Hartman Oil Co. Inc.

Doris Green #4

DST Test Number: 1





TRILOBITE TESTING INC.

P.O. Box 1733 • Hays, Kansas 67601

Test Ticket

NO. 48963

Well Name & No. Donis Green #4 Test No. 1 Date 7-24-12
 Company Hartman Oil Co. Inc. Elevation 2924 KB _____ GL _____
 Address 10500 E Berkeley SQ Pkwy STE 100 Wichita 67206
 Co. Rep / Geo. Kitt Noah Rig #2 Rig #2
 Location: Sec. 19 Twp. 2ls Rge. 3.3w Co. Finney State KS

Interval Tested 4150 - 4200 Zone Tested LKC-"K"
 Anchor Length 50 Drill Pipe Run 3897 Mud Wt. 9.0
 Top Packer Depth 4146 Drill Collars Run 241 Vis 47
 Bottom Packer Depth 4150 Wt. Pipe Run _____ WL 8.0
 Total Depth 4200 Chlorides 2000 ppm System LCM 2#

Blow Description IF - B.O.B 6mins
ISF - Dead No Blow Back
FF - B.O.B 8mins
FSI - Dead No Blow Back

Rec	Feet of	%gas	%oil	%water	%mud
<u>3403</u>	<u>GMCO</u>	<u>10</u>	<u>85</u>	<u>5</u>	<u>5</u>
<u>186</u>	<u>GMCO</u>	<u>35</u>	<u>55</u>	<u>10</u>	<u>10</u>
<u>124</u>	<u>MCO</u>	<u>70</u>	<u>20</u>	<u>20</u>	<u>20</u>
<u>124</u>	<u>WCMO</u>	<u>40</u>	<u>26</u>	<u>40</u>	<u>40</u>
<u>72</u>	<u>MCO</u>	<u>70</u>	<u>38</u>	<u>38</u>	<u>38</u>

Rec Total 909 BHT 116 Gravity 19 API RW _____ @ _____ °F Chlorides _____ ppm

(A) Initial Hydrostatic 2028 2028 Test 1250 T-On Location 20:30
 (B) First Initial Flow 43 43 Jars _____ T-Started 00:57
 (C) First Final Flow 269 269 Safety Joint _____ T-Open 03:41
 (D) Initial Shut-In 1082 1082 Circ Sub N/C T-Pulled 05:41
 (E) Second Initial Flow 276 276 Hourly Standby _____ T-Out 09:06
 (F) Second Final Flow 393 393 Mileage 56 R/T 86.80 Comments Loaded @ 2:40
 (G) Final Shut-In 1018 1018 Sampler _____ 7/27/12
 (H) Final Hydrostatic 1940 1940 Straddle _____ Ruined Shale Packer _____
 Shale Packer _____ Ruined Packer _____
 Extra Packer _____ Extra Copies _____
 Extra Recorder _____ Sub Total 0
 Day Standby _____ Total 1336.80
 Accessibility _____ MP/DST Disc't _____

Initial Open 30
 Initial Shut-In 30
 Final Flow 30
 Final Shut-In 30
 Sub Total 1336.80

Approved By Kitt Noah Our Representative [Signature]

TriLOBite Testing Inc. shall not be liable for damaged of any kind of the property or personnel of the one for whom a test is made, or for any loss suffered or sustained, directly or indirectly, through the use of its equipment, or its statements or opinion concerning the results of any test, tools lost or damaged in the hole shall be paid for at cost by the party for whom the test is made.