



**TRILOBITE TESTING, INC.**

# DRILL STEM TEST REPORT

Russell Oil  
 PO Box 8050  
 Edmond, Ok 73083  
 ATTN: Kitt Noah

**31-15-14 Russell, Ks**  
**Betty Radke "A" 1R**  
 Job Ticket: 47136 **DST#: 7**  
 Test Start: 2012.05.30 @ 08:25:23

## GENERAL INFORMATION:

Formation: **Arbuckle (2)**  
 Deviated: No Whipstock: ft (KB)  
 Time Tool Opened: 09:49:23  
 Time Test Ended: 13:41:53  
 Interval: **3377.00 ft (KB) To 3385.00 ft (KB) (TVD)**  
 Total Depth: 3385.00 ft (KB) (TVD)  
 Hole Diameter: 7.88 inches Hole Condition: Good  
 Test Type: Conventional Bottom Hole (Reset)  
 Tester: Brian Fairbank  
 Unit No: 41  
 Reference Elevations: 1916.00 ft (KB)  
 1907.00 ft (CF)  
 KB to GR/CF: 9.00 ft

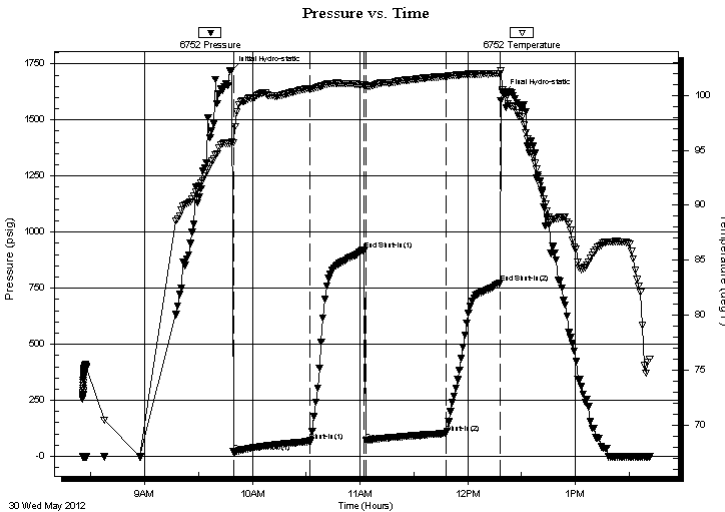
## Serial #: 6752

Inside

Press @ Run Depth: 102.94 psig @ 3378.00 ft (KB) Capacity: 8000.00 psig  
 Start Date: 2012.05.30 End Date: 2012.05.30 Last Calib.: 2012.05.30  
 Start Time: 08:25:24 End Time: 13:41:53 Time On Btm: 2012.05.30 @ 09:48:23  
 Time Off Btm: 2012.05.30 @ 12:19:53

TEST COMMENT: IFP - BOB 11 min  
 ISI - sur blow back - died 7 min  
 FFP - weak to fair blow 1/4" - 5"  
 FSI - no blow back

## PRESSURE SUMMARY



Time (Min.)	Pressure (psig)	Temp (deg F)	Annotation
0	1720.98	95.77	Initial Hydro-static
1	20.17	95.68	Open To Flow (1)
44	66.73	100.59	Shut-In(1)
74	920.33	100.98	End Shut-In(1)
75	69.65	100.82	Open To Flow (2)
120	102.94	101.73	Shut-In(2)
150	774.17	101.97	End Shut-In(2)
152	1618.05	100.29	Final Hydro-static

## Recovery

Length (ft)	Description	Volume (bbl)
15.00	WOCM 37%O, 3%W, 60%M	0.21
235.00	FREE OIL 95%O, 5%M	3.30
0.00	60' GIP	0.00

\* Recovery from multiple tests

## Gas Rates

Choke (inches)	Pressure (psig)	Gas Rate (Mcf/d)



**TRILOBITE  
TESTING, INC.**

# DRILL STEM TEST REPORT

**FLUID SUMMARY**

Russell Oil  
PO Box 8050  
Edmond, Ok 73083  
ATTN: Kitt Noah

**31-15-14 Russell, Ks**  
**Betty Radke "A" 1R**  
Job Ticket: 47136      **DST#: 7**  
Test Start: 2012.05.30 @ 08:25:23

## Mud and Cushion Information

Mud Type: Gel Chem	Cushion Type:	Oil API: 37 deg API
Mud Weight: 9.00 lb/gal	Cushion Length: ft	Water Salinity: ppm
Viscosity: 46.00 sec/qt	Cushion Volume: bbl	
Water Loss: 12.39 in <sup>3</sup>	Gas Cushion Type:	
Resistivity: ohm.m	Gas Cushion Pressure: psig	
Salinity: 10500.00 ppm		
Filter Cake: inches		

## Recovery Information

Recovery Table

Length ft	Description	Volume bbl
15.00	WOCM 37%O, 3%W, 60%M	0.210
235.00	FREE OIL 95%O, 5%M	3.296
0.00	60' GIP	0.000

Total Length: 250.00 ft      Total Volume: 3.506 bbl  
Num Fluid Samples: 0      Num Gas Bombs: 0      Serial #:  
Laboratory Name:      Laboratory Location:  
Recovery Comments:

Serial #: 6752

Inside

Russell Oil

Betty Radke "A" 1R

DST Test Number: 7

# Pressure vs. Time

