

OPERATOR

Company: Hutchinson Oil Co.
 Address: P.O. Box 521
 Derby, KS 67037

Contact Geologist:
 Contact Phone Nbr: 316-788-5440
 Well Name: Schlochtermeier #2-24
 Location: 8 5/8" @ 334'
 Pool:
 State: Kansas, Stafford Co.

API: 15-185-23755-00-00
 Field: Wildcat
 Country: USA



Musgrove

**PETROLEUM
 CORPORATION**
 Claflin, Kansas

Scale 1:240 Imperial

Well Name: Schlochtermeier #2-24
 Surface Location: 8 5/8" @ 334'
 Bottom Location:
 API: 15-185-23755-00-00
 License Number:
 Spud Date: 6/22/2012 Time: 3:34 PM
 Region: SE-SE-NW-SE 24-23s-13w
 Drilling Completed: 6/28/2012 Time: 8:50 PM
 Surface Coordinates: 1475' From South Line & 1605' From East Line
 Bottom Hole Coordinates:
 Ground Elevation: 1878.00ft
 K.B. Elevation: 1885.00ft
 Logged Interval: 2800.00ft To: 3956.00ft
 Total Depth: 3956.00ft
 Formation: Lansing
 Drilling Fluid Type: Chemical mud was displaced at 2900'

SURFACE CO-ORDINATES

Well Type: Vertical
 Longitude: Latitude:
 N/S Co-ord: 1475' From South Line
 E/W Co-ord: 1605' From East Line

LOGGED BY

Company: Musgrove Petroleum Corp.
 Address: 212 Main St.
 Claflin, KS 67525
 Phone Nbr: 620-546-3960
 Logged By: Geologist Name: Josh Austin

CONTRACTOR

Contractor: Royal Drilling Inc
 Rig #: 1
 Rig Type:
 Spud Date: 6/22/2012 Time: 3:34 PM
 TD Date: 6/28/2012 Time: 8:50 PM
 Rig Release: Time:

ELEVATIONS

K.B. Elevation: 1885.00ft Ground Elevation: 1878.00ft

NOTES

On the basis of the positive structural position, drill stem test and after reviewing the electric logs, it was recommended by all parties involved to run 4 1/2" production casing to further test the following zones: Simpson Sand, Viola, Lansing zones.

Hutchinson Oil Co.

well comparison sheet

DRILLING WELL					COMPARISON WELL			
Schlochtermeyer 2-24					Schlochtermeyer 1-24			
1885 KB					1891 KB		Structural Relationship	
Formation	Sample	Sub-Sea	Log	Sub-Sea	Log	Sub-Sea	Sample	Log
Anhydrite	729	1156			727	1164	-8	
Heebner	3269	-1384	3270	-1385	3278	-1387	3	2
Toronto	3287	-1402	3290	-1405	3296	-1405	3	0
Douglas	3305	-1420	3307	-1422	3314	-1423	3	1
Brown Lime	3407	-1522	3406	-1521	3417	-1526	4	5
Lansing	3430	-1545	3432	-1547	3439	-1548	3	1
Base KC	3696	-1811	3695	-1810	3705	-1814	3	4
Marmaton	3716	-1831	3710	-1825	3724	-1833	2	8
Viola	3766	-1881	3770	-1885	3779	-1888	7	3
Simpson Shale	3853	-1968	3860	-1975	3867	-1976	8	1
Simpson Sand	3880	-1995	3884	-1999				
Simpson Dol.					3891	-2000		
Arbuckle	3918	-2033	3920	-2035				
Total Depth	3956	-2071	3958	-2073	3928	-2037		

DRILL STEM TEST REPORT

Hutchinson Oil Corp

24-23s-13w

Po Box 521
Derby KS 67037

Schlochtermeyer#2-24

Job Ticket: 47558 DST#: 1

ATTN: Steve Hutchinson/ Jo

Test Start: 2012.06.26 @ 20:12:00



TRIOBITE
TESTING, INC.

GENERAL INFORMATION:

Formation: Lansing F
 Deviated: No Whipstock: ft (KB)
 Time Tool Opened: 22:04:30
 Time Test Ended: 02:54:45

Test Type: Conventional Bottom Hole (Initial)
 Tester: Chris Staats
 Unit No: 47

Interval: 3490.00 ft (KB) To 3513.00 ft (KB) (TVD)

Reference Elevations: 1885.00 ft (KB)

Total Depth: 3513.00 ft (KB) (TVD)

1878.00 ft (CF)

Hole Diameter: 7.88 inches Hole Condition: Fair

KB to GB/CF: 7.00 ft

Serial #: 6773

Outside

Press@RunDepth: 148.78 psig @ 3491.00 ft (KB)

Capacity: 8000.00 psig

Start Date: 2012.06.26 End Date: 2012.06.27

Last Calib.: 2012.06.27

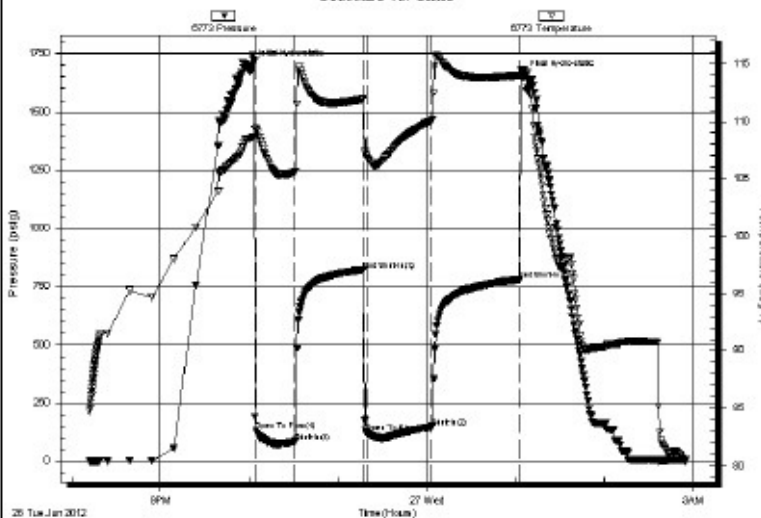
Start Time: 20:12:05 End Time: 02:54:44

Time On Btn: 2012.06.26 @ 22:01:30

Time Off Btn: 2012.06.27 @ 01:04:45

TEST COMMENT: IF: Strong blow BOB 30 sec GTS 3 min { see gas flow report }
IS: Weak blow back 2"
FF: Strong blow BOB 2 sec { see gas flow report }
FS: Strong blow Back BOB 12 min

Pressure vs. Time



PRESSURE SUMMARY

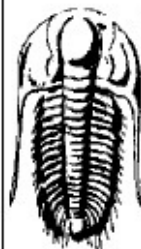
Time (Min.)	Pressure (psig)	Temp (deg F)	Annotation
0	1699.74	108.55	Initial Hydro-static
3	133.17	109.41	Open To Flow (1)
29	85.70	105.61	Shut-In(1)
76	821.59	111.92	End Shut-In(1)
78	126.16	106.96	Open To Flow (2)
122	148.78	110.06	Shut-In(2)
181	780.08	113.99	End Shut-In(2)
184	1656.49	114.49	Final Hydro-static

Recovery

Length (ft)	Description	Volume (bbl)
0.00	3481 GIP	0.00
200.00	Clean Oil 100%	2.81
120.00	G,O,W,M 10%gas 10% oil 30% water	50*1.68 rd

Gas Rates

	Choke (inches)	Pressure (psig)	Gas Rate (Mcf/d)
First Gas Rate	0.50	6.00	137.61
Last Gas Rate	0.25	8.00	35.54
Max. Gas Rate	0.75	15.00	459.22



TRILOBITE TESTING, INC

DRILL STEM TEST REPORT

Hutchinson Oil Corp

24-235-13w

Po Box 521
Derby KS 67037

Schlochtermeier#2-24

ATTN: Steve Hutchinson/ Jo

Job Ticket: 47559 DST#: 2

Test Start: 2012.06.27 @ 12:07:58

GENERAL INFORMATION:

Formation: Lansing H-I
Deviated: No Whipstock: ft (KB)
Time Tool Opened: 13:36:28
Time Test Ended: 18:15:13

Test Type: Conventional Bottom Hole (Reset)
Tester: Chris Staats
Unit No: 47

Interval: 3560.00 ft (KB) To 3595.00 ft (KB) (TVD)
Total Depth: 3595.00 ft (KB) (TVD)
Hole Diameter: 7.88 inches Hole Condition: Fair

Reference Elevations: 1885.00 ft (KB)
1878.00 ft (CF)
KB to GR/CF: 7.00 ft

Serial #: 6773

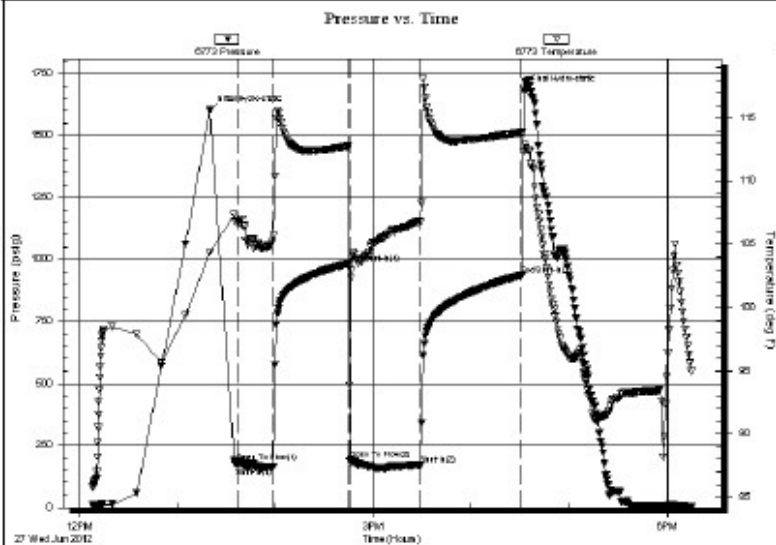
Outside

Press@RunDepth: 172.00 psig @ 3561.00 ft (KB)

Capacity: 8000.00 psig

Start Date: 2012.06.27 End Date: 2012.06.27 Last Calib.: 2012.06.27
 Start Time: 12:08:03 End Time: 18:15:12 Time On Btm: 2012.06.27 @ 13:19:58
 Time Off Btm: 2012.06.27 @ 16:31:58

TEST COMMENT: IF: Strong blow BOB 10 sec GTS 1 min { see gas flow report }
 IST: Weak blow back 1"
 FF: Strong blow BOB 2 sec
 FST: Strong blow back BOB



PRESSURE SUMMARY

Time (Min.)	Pressure (psig)	Temp (deg F)	Annotation
0	1601.36	104.33	Initial Hydro-static
17	181.86	106.88	Open To Flow (1)
38	162.54	105.27	Shut-In(1)
85	985.91	112.79	End Shut-In(1)
86	196.29	102.31	Open To Flow (2)
129	172.00	106.79	Shut-In(2)
191	936.90	113.85	End Shut-In(2)
192	1681.04	112.30	Final Hydro-static

Recovery

Length (ft)	Description	Volume (bbl)
0.00	3542 GIP	0.00
20.00	Clean oil	0.28
90.00	W,O,M,G 5% w ater 15%oil 30% mud50%	1.26

* Recovery from multiple tests

Gas Rates

	Choke (inches)	Pressure (psig)	Gas Rate (Mcf/d)
First Gas Rate	1.00	9.00	672.72
Last Gas Rate	0.75	13.00	427.98
Max. Gas Rate	0.75	16.00	474.84



TRILOBITE TESTING, INC.

DRILL STEM TEST REPORT

Hutchinson Oil Corp

24-23s-13w

Po Box 521
 Derby KS 67037

Schlochtermeyer#2-24

Job Ticket: 47560

DST#: 3

ATTN: Steve Hutchinson/ Jo

Test Start: 2012.06.28 @ 01:19:00

GENERAL INFORMATION:

Formation: **Lansing J-K**
 Deviated: No Whipstock: ft (KB)
 Time Tool Opened: 02:54:00
 Time Test Ended: 07:27:00

Test Type: Conventional Bottom Hole (Reset)
 Tester: Chris Staats
 Unit No: 47

Interval: 3595.00 ft (KB) To 3643.00 ft (KB) (TVD)
 Total Depth: 3643.00 ft (KB) (TVD)
 Hole Diameter: 7.88 inches Hole Condition: Fair

Reference Elevations: 1885.00 ft (KB)
 1878.00 ft (CF)
 KB to GR/CF: 7.00 ft

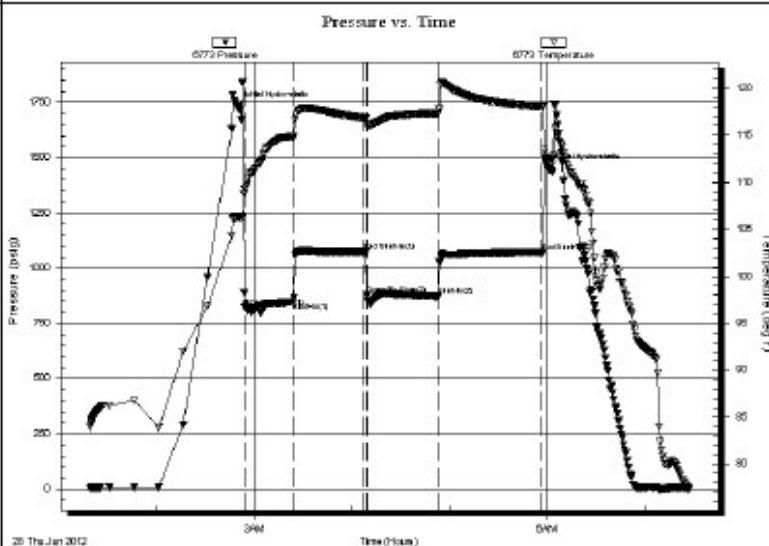
Serial #: 6773

Outside

Press@RunDepth: 873.49 psig @ 3596.00 ft (KB)
 Start Date: 2012.06.28 End Date: 2012.06.28
 Start Time: 01:19:05 End Time: 07:26:59

Capacity: 8000.00 psig
 Last Calib.: 2012.06.28
 Time On Btm: 2012.06.28 @ 02:49:30
 Time Off Btm: 2012.06.28 @ 06:00:45

TEST COMMENT: IF: Strong blow BOB 10 sec GTS 1 min {see gas flow report}
 IS: Weak blow back 4"
 FF: Strong blow BOB 2 sec { see gas flow report }
 FS: Fair blow back 5"



PRESSURE SUMMARY

Time (Min.)	Pressure (psig)	Temp (deg F)	Annotation
0	1730.50	106.23	Initial Hydro-static
5	822.88	109.28	Open To Flow (1)
34	847.42	114.87	Shut-In(1)
78	1074.65	116.86	End Shut-In(1)
80	881.42	116.12	Open To Flow (2)
123	873.49	117.35	Shut-In(2)
187	1072.06	118.06	End Shut-In(2)
192	1449.54	112.55	Final Hydro-static

Recovery

Length (ft)	Description	Volume (bbl)
0.00	3605' GIP	0.00
62.00	G,M,W 20%gas 40%mud 40%water with 0.87 p	

* Recovery from multiple tests

Gas Rates

	Choke (inches)	Pressure (psig)	Gas Rate (Mcf/d)
First Gas Rate	1.00	130.00	4151.33
Last Gas Rate	1.00	150.00	4726.31
Max. Gas Rate	1.00	150.00	4726.31



TRILOBITE TESTING, INC.

DRILL STEM TEST REPORT

Hutchinson Oil Corp

24-23s-13w

Po Box 521
 Derby KS 67037

Schlochtermeyer#2-24

Job Ticket: 47561 DST#: 4

ATTN: Steve Hutchinson/ Jo

Test Start: 2012.06.28 @ 23:09:10

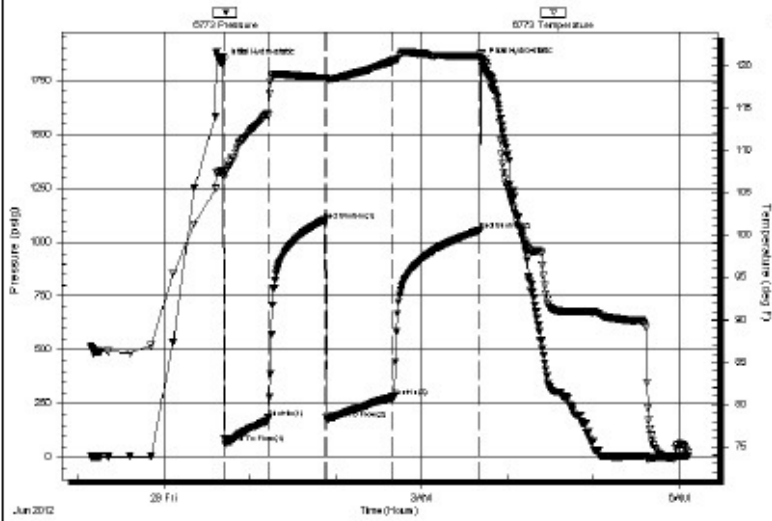
GENERAL INFORMATION:

Formation: **Viola**
 Deviated: **No** Whipstock: **ft (KB)**
 Time Tool Opened: **00:42:40**
 Time Test Ended: **06:05:55**
 Interval: **3730.00 ft (KB) To 3810.00 ft (KB) (TVD)**
 Total Depth: **3810.00 ft (KB) (TVD)**
 Hole Diameter: **7.88 inches** Hole Condition: **Fair**
 Test Type: **Conventional Bottom Hole (Reset)**
 Tester: **Chris Staats**
 Unit No: **47**
 Reference Elevations: **1885.00 ft (KB)**
1878.00 ft (CF)
 KB to GR/CF: **7.00 ft**

Serial #: 6773 **Outside**
 Press@RunDepth: **283.35 psig @ 3731.00 ft (KB)** Capacity: **8000.00 psig**
 Start Date: **2012.06.28** End Date: **2012.06.29** Last Calib.: **2012.06.29**
 Start Time: **23:09:15** End Time: **06:05:54** Time On Btn: **2012.06.29 @ 00:40:40**
 Time Off Btn: **2012.06.29 @ 03:41:55**

TEST COMMENT: IF: Strong blow BOB 1 min
 IS: Fair blow back 5"
 FF: Strong blow BOB 2 min
 FS: Fair blow back 5"

Pressure vs. Time



PRESSURE SUMMARY

Time (Min.)	Pressure (psig)	Temp (deg F)	Annotation
0	1828.48	107.58	Initial Hydro-static
2	65.80	107.44	Open To Flow (1)
33	186.19	114.05	Shut-In(1)
71	1101.19	118.57	End Shut-In(1)
73	180.00	118.32	Open To Flow (2)
119	283.35	120.56	Shut-In(2)
180	1055.03	121.14	End Shut-In(2)
182	1835.19	120.82	Final Hydro-static

Recovery

Length (ft)	Description	Volume (bbl)
0.00	2540' GIP	0.00
240.00	M,W 10% w ater 90% mud	3.37
240.00	W,O,G 20% w ater 30%oil 50%gas	3.37
240.00	O,W 10%oil 90%w ater	3.37

* Recovery from multiple tests

Gas Rates

Choke (inches)	Pressure (psig)	Gas Rate (Mcf/d)

ROCK TYPES

Cht	Lmst fw7>	shale, gry	Ss
Dolsec	shale, grn	Carbon Sh	

ACCESSORIES

MINERAL

- ∟ Dolomitic
- △ Chert White
- Mc Mica

FOSSIL

- F Fossils < 20%
- ⊕ Oomoldic

STRINGER

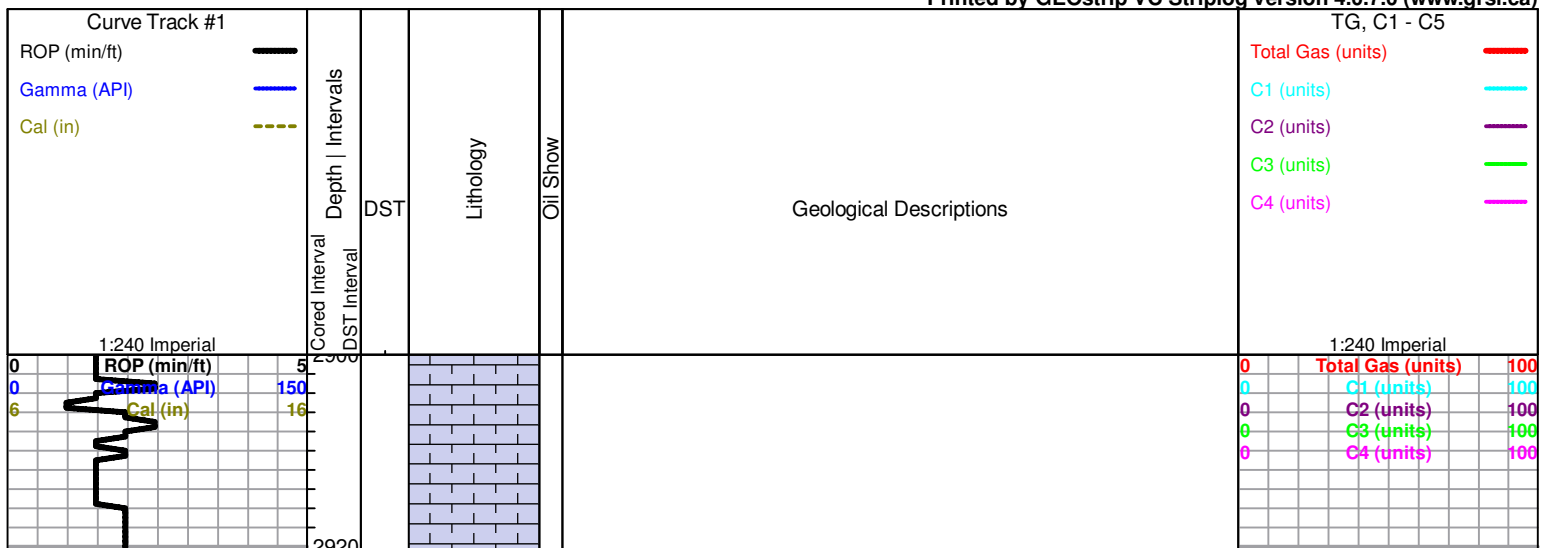
- ▨ Dolomite

OTHER SYMBOLS

DST

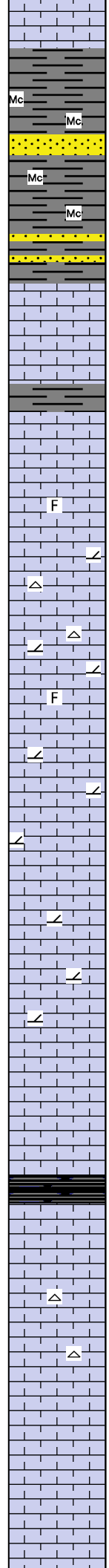
- DST Int
- DST alt
- Core
- tail pipe

Printed by GEOstrip VC Striplog version 4.0.7.0 (www.grsi.ca)



2920
2940
2960
2980
3000
3020
3040
3060
3080
3100
3120
3140

AP (min/ft) 5
Gamma (API) 150
Cal (in) 16



SEVERY 2927 (-1042)

Sand; greyish green, very fine grained, dense, poorly developed porosity, micaceous, questionable trace gas bubble, dull grey fluorescence, no odor

plus Shale; grey-dark grey, soft, micaceous

TOPEKA 2960 (-1075)

Limestone; tan-grey, fine xln, slightly fossiliferous, poor visible porosity, dense, no shows, plus grey boney Chert

Limestone; lt. grey-buff, fine-medium xln, fossiliferous, chalky, fossil cast type porosity, no shows

trace lt. grey Chert

Limestone; as above

Limestone; tan-buff-lt. grey, fine xln, slightly sucrosic, dolomitic in part, few scattered porosity, no shows

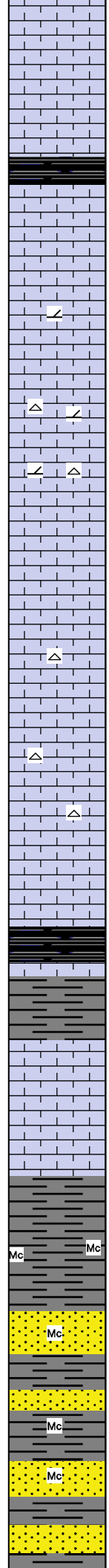
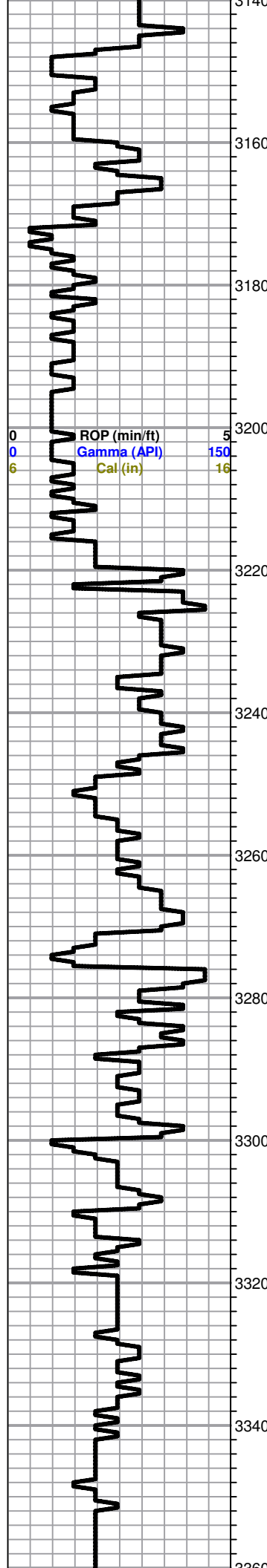
Limestone; lt. grey-buff, fine-medium xln, chalky, slightly fossiliferous, fair porosity, no shows

black carboniferous shale

Limestone; cream-lt. grey, fine xln, slightly fossiliferous-oolitic, chalky, scattered porosity, plus grey boney Chert

Limestone; as above

0	Total Gas (units)	100
0	C1 (units)	100
0	C2 (units)	100
0	C3 (units)	100
0	C4 (units)	100



Limestone; cream-tan, fine xln, chalky, dense, fossiliferous, no shows

black carboniferous shale

Limestone; cream-buff, fine-medium xln, fossiliferous, chalky, scattered inter xln-fossil cast type porosity, no shows

Limestone; as above, plus lt. grey, boney Chert

Limestone; grey-tan, fine xln, dense, slightly fossiliferous, no visible porosity, cherty in part

Limestone; as above, trace grey-buff boney Chert

HEEBNER 3269 (-1384)

Black Carboniferous Shale

grey-green; Shale

TORONTO 3287 (-1402)

Limestone; white-cream, fine xln, chalky

DOUGLAS 3305 (-1420)

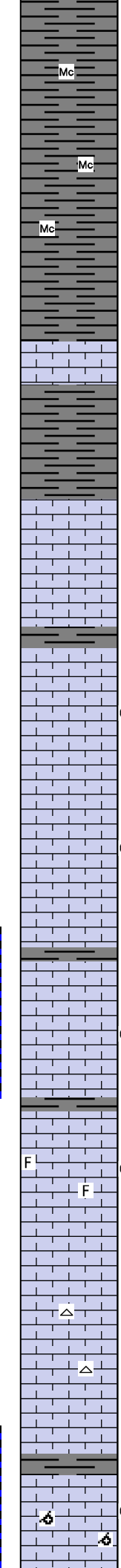
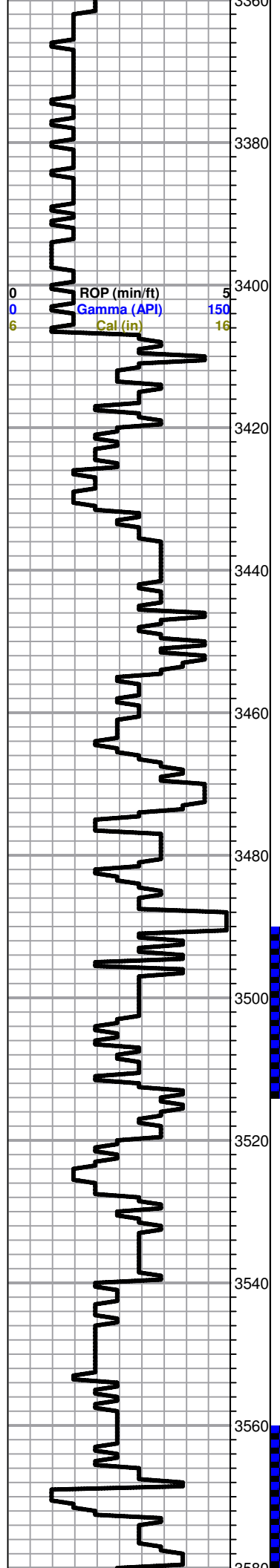
Shale; grey-green-maroon, soft, silty in part, slightly micaceous

Shale; grey-bluish green, soft, silty in part, micaceous

Plus Sand; grey-greyish green, very fine grained, micaceous, poorly developed porosity, dense, no shows

0	Total Gas (units)	100
0	C1 (units)	100
0	C2 (units)	100
0	C3 (units)	100
0	C4 (units)	100

KB 1885



Shale and Sand as above

Shale; grey-dark grey, greyish green, soft, micaceous

BROWN LIME 3407 (-1522)

Limestone; tan-brown-buff, fine xln, dense, cherty, slightly fossiliferous

grey-greyish green shale

LANSING 3430 (-1545)

Limestone; cream-grey, fine xln, chalky, fossiliferous in part, dense, poor visible porosity, slightly cherty, no shows

Limestone; cream, fine xln, chalky in part, dense, slightly fossiliferous, few inter xln type porosity, brown-golden brown stain, trace free oil, faint odor

Limestone; white-cream, fine xln, chalky, dense, poorly developed porosity, sparry calcite, black-grey stain, NSFO, no odor

Limestone; buff-grey, fine xln, dense, cherty, poor visible porosity, no shows

Limestone; tan, fine-medium xln, chalky, inter xln porosity, brown spotty stain, spotty SFO, faint odor, trace gas bubbles

Limestone; cream, oolitic-fossiliferous, chalky, scattered fossil cast-oolitic type porosity, black-dark brown stain, NSFO, no odor

Limestone; cream-grey, fine xln, chalky, slightly oolitic, dense, cherty, poor visible porosity, no shows

plus white-lt. grey boney Chert

dark grey-black shale

Limestone; cream-buff, fine xln, dense, fair-good oomoldic porosity, golden brown stain, spotty clear SFO, very faint odor

DST #1 3490-3513
30-45-45-60

Blow; BOB in 30 sec
GTS in 3 min
2" blow back
Final; BOB
immediately, GTS in
30 sec
BOB blow back

Gas Rate information

Min	Choke	Mcf/d
10	.50	137.61
20		130.87
30		117.38
final		
5	.75	459.22
15	.50	117.38
25	.25	33.95
35		35.54
45		35.54

Recovery;
200' clean oil
120' GOWM
(10%g 10%o 30%w
50%m)

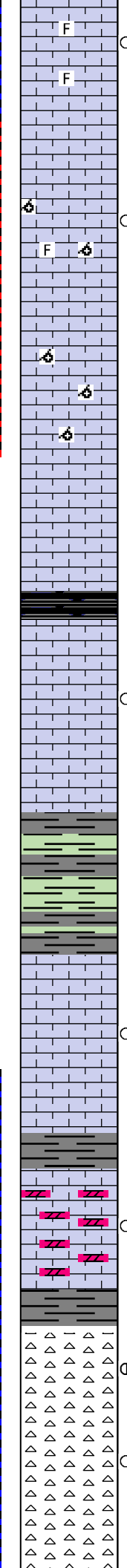
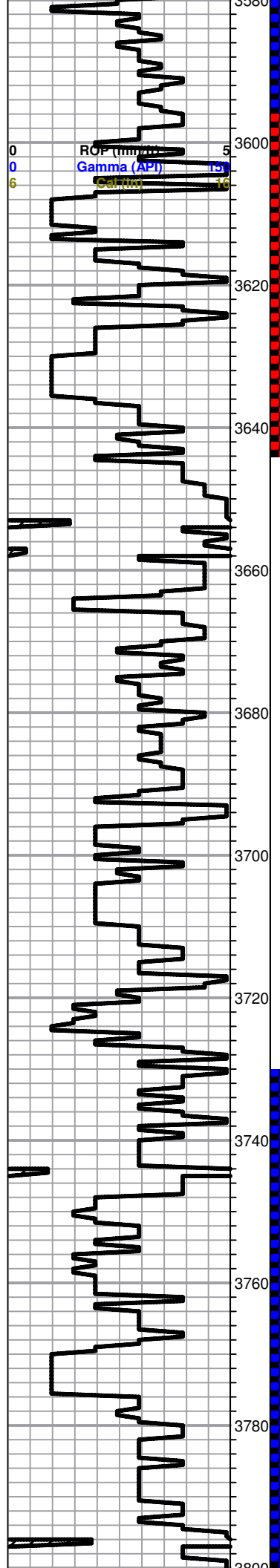
Pressure;
ISIP 821
FSIP 780
IFP 133-85
FFP 126-148
HSH 1699-1656

DST #2 3560-3595
30-45-45-60

Blow; BOB in 10 sec
GTS in 1 min
1" blow back
Final; BOB 2 sec,
GTS in 30 sec
BOB blow back

Gas Rate information

Min	Choke	Mcf/d
10	1.00	672.72
20		615.22
30		586.48
final		
5	1.00	730.22
15		845.22
30	.75	474.84
45		427.98



Limestone; cream, highly fossiliferous/oolitic, good fossil cast porosity, golden brown stain, trace free oil, faint odor

Limestone; cream-grey, oomoldic, oolitic, fossil cast-oomoldic type porosity, brown stain, SFO, faint odor

Limestone; cream, oomoldic, chalky in part, fair-good oomoldic porosity, brown stain, slight SFO, few gas bubbles

Limestone; cream-buff-grey, fine xln, dense, cherty in part, poor visible porosity, no shows

black carboniferous shale

Limestone; cream-tan, fine xln, dense, chalky in part, slightly fossiliferous, trace black stain, NSFO, no odor

BASE KANSAS CITY 3696 (-1811)

Shale; grey-green, soft

MARMATON 3716 (-1831)

Limestone; cream-white, fine-medium xln, slightly granular in part, cherty, trace black stain, questionable trace free oil, no odor

grey shale

Dolomite; tan-buff, fine-medium xln, fair inter xln porosity, brown stain, spotty SFO, faint odor

VIOLA 3766 (-1881)

Chert; white-cream, semi tripolitic in a part, few weathered pieces, trace dolomite; tan-cream, cherty, brown stain, SFO, faint gassy odor

Chert; cream-white-yellow, semi tripolitic, honey black edge staining, trace free oil

Recovery;
20' clean oil
90' WGMO
(5%w 15%o 30%m
50%g)

Pressure;
ISIP 986
FSIP 936
IFP 181-162
FFP 196-172
HSH 1601-1681

DST #3 3595-3643
30-45-45-60

Blow; BOB in10 sec
GTS in 1 min
4" blow back
Final; BOB 2 sec,
GTS in 30 sec
5" blow back

Gas Rate information

Min	Choke	Mcf/d
5	1.00	4151.33
15		4582.56
30		4582.56
final		
1	1.00	3288.86
15		4726.31
30		4726.31
45		4726.31

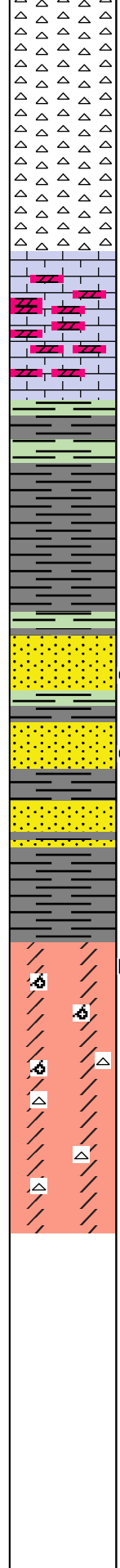
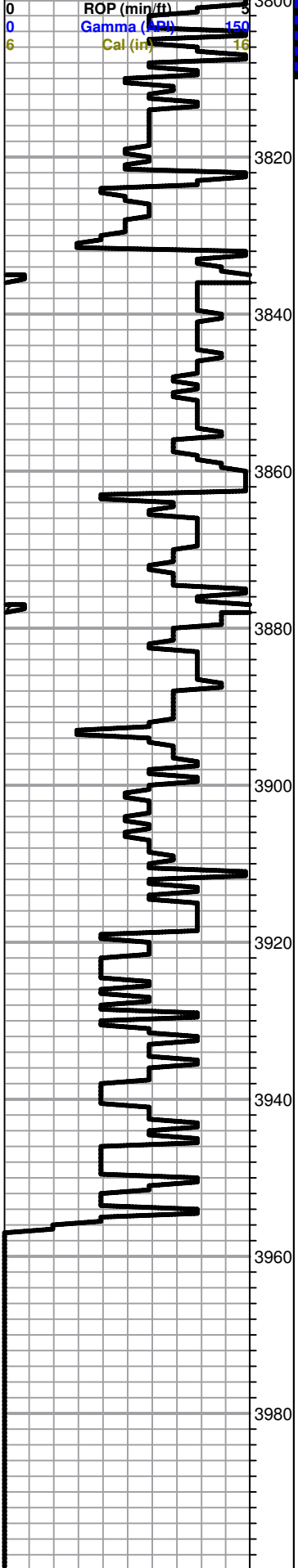
Recovery;
62' GMW w/ oil spots
(20%g 40%w 40%m)

Pressure;
ISIP 1074
FSIP 1072
IFP 822-847
FFP 881-873
HSH 1730-1449

DST #4 3730-3810
30-45-45-60

Blow; BOB in1 min
5" blow back
Final; BOB in 2 min
5" blow back

Recovery;
2540' GIP
240' MW
(10%w 90%m)
240' WOG
(50%g 30%o 20%w)



boney, black edge staining, trace free oil, very faint odor

Chert; cream-lt. grey, boney, semi tripolitic in part

Chert; as above

Limestone; cream, fine xln, sucrosic, dolomitic in part, no shows

SIMPSON SHALE 3853 (-1968)

Shale; grey-green, waxey

Shale; variety of colors, soft/gummy, few silty pieces

SIMPSON SAND 3880 (-1995)

Sand; clear-grey, very fine grained, sub angular, sub rounded, friable, black stain, slight spotty SFO, faint-fair odor when broke open

Sand and Shale as above

ARBUCKLE 3918 (-2033)

Dolomite; pink-cream-lt. grey, fine xln, dense, slightly sucrosic in part, cherty, poor visible porosity, trace black stain, NSFO, no odor

Dolomite; as above, scattered oomoldic type porosity, (barren)

Dolomite; pinkish grey-cream, fine xln, dense, cherty, poor visible porosity, no shows

ROTARY TOTAL DEPTH 3956 (-2071)

