

## DRILL STEM TEST REPORT

Prepared For: **Stelbar Oil Corporation**

1625 N Waterfront Pkwy.  
Wichita, KS 67206-6602

ATTN: David Goldak

**LPR #1-21**

**S21-15-33 Logan, KS**

Start Date: 2012.07.20 @ 14:17:21

End Date: 2012.07.20 @ 21:16:41

Job Ticket #: 48937                      DST #: 5

Trilobite Testing, Inc  
PO Box 362 Hays, KS 67601  
ph: 785-625-4778 fax: 785-625-5620

Printed: 2012.07.25 @ 13:50:45

Stelbar Oil Corporation

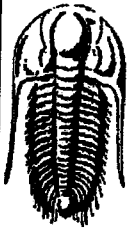
S21-15-33 Logan, KS

LPR #1-21

DST # 5

Atamont & Cherokee

2012.07.20



**TRILOBITE  
TESTING, INC.**

# DRILL STEM TEST REPORT

Stelbar Oil Corporation  
1625 N Waterfront Pkwy.  
Wichita, KS 67206-6602  
ATTN: David Goldak

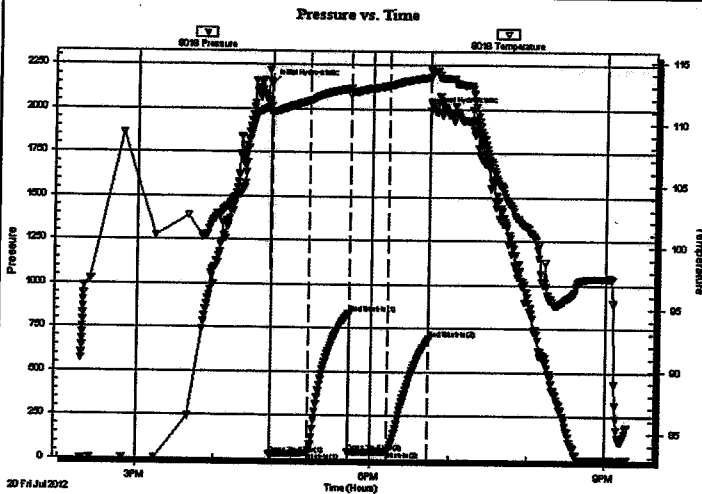
**S21-15-33 Logan, KS**  
**LPR #1-21**  
Job Ticket: 48937      DST#: 5  
Test Start: 2012.07.20 @ 14:17:21

## GENERAL INFORMATION:

Formation: **Altamont & Cherokee**  
Deviated: No      Whipstock:      ft (KB)  
Time Tool Opened: 16:42:51  
Time Test Ended: 21:16:41  
Interval: **4286.00 ft (KB) To 4419.00 ft (KB) (TVD)**  
Total Depth: **4419.00 ft (KB) (TVD)**  
Hole Diameter: **7.88 inches** Hole Condition: Good  
Test Type: Conventional Bottom Hole (Reset)  
Tester: Tate Lang  
Unit No: 62  
Reference Elevations: 2923.00 ft (KB)  
2916.00 ft (CF)  
KB to GR/CF: 7.00 ft

**Serial #: 8018**      Inside  
Press@RunDepth: 46.11 psig @ 4415.00 ft (KB)      Capacity: 8000.00 psig  
Start Date: 2012.07.20      End Date: 2012.07.20      Last Calib.: 2012.07.20  
Start Time: 14:17:23      End Time: 21:16:40      Time On Btm: 2012.07.20 @ 16:42:31  
Time Off Btm: 2012.07.20 @ 18:44:11

**TEST COMMENT:** IF-Weak Surface Blow Died in 10 mins  
ISI-Dead No Blow Back  
FF-Weak Surface Blow Died in 15 sec.  
FSI-Dead No Blow Back



## PRESSURE SUMMARY

Time (Min.)	Pressure (psig)	Temp (deg F)	Annotation
0	2144.83	111.41	Initial Hydro-static
1	27.90	110.70	Open To Flow (1)
30	36.90	111.83	Shut-In(1)
61	835.98	112.84	End Shut-In(1)
61	41.42	112.31	Open To Flow (2)
91	46.11	113.06	Shut-In(2)
122	691.74	113.76	End Shut-In(2)
122	1993.13	114.36	Final Hydro-static

## Recovery

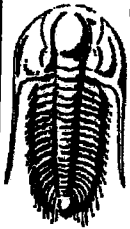
Length (ft)	Description	Volume (bbl)
50.00	98%Mud 2%Oil	0.70

\* Recovery from multiple tests

## Gas Rates

Choke (inches)	Pressure (psig)	Gas Rate (Mcf/d)





**TRILOBITE  
TESTING, INC.**

## DRILL STEM TEST REPORT

TOOL DIAGRAM

Stelbar Oil Corporation

S21-15-33 Logan, KS

1625 N Waterfront Pkwy.  
Wichita, KS 67206-6602

LPR #1-21

Job Ticket: 48937

DST#: 5

ATTN: David Goldak

Test Start: 2012.07.20 @ 14:17:21

### Tool Information

Drill Pipe:	Length: 4283.00 ft	Diameter: 3.80 inches	Volume: 60.08 bbl	Tool Weight: 2500.00 lb
Heavy Wt. Pipe:	Length: 0.00 ft	Diameter: 0.00 inches	Volume: 0.00 bbl	Weight set on Packer: 20000.00 lb
Drill Collar:	Length: 0.00 ft	Diameter: 2.25 inches	Volume: 0.00 bbl	Weight to Pull Loose: 65000.00 lb
		<b>Total Volume:</b>	<b>60.08 bbl</b>	Tool Chased 0.00 ft
Drill Pipe Above KB:	24.50 ft			String Weight: Initial 60000.00 lb
Depth to Top Packer:	4286.00 ft			Final 60000.00 lb
Depth to Bottom Packer:	ft			
Interval between Packers:	133.00 ft			
Tool Length:	160.50 ft			
Number of Packers:	2	Diameter: 6.75 inches		

Tool Comments:

### Tool Description

Tool Description	Length (ft)	Serial No.	Position	Depth (ft)	Accum. Lengths
Change Over Sub	1.00			4259.50	
Shut In Tool	5.00			4264.50	
Hydraulic tool	5.00			4269.50	
Jars	5.00			4274.50	
Safety Joint	2.50			4277.00	
Packer	5.00			4282.00	27.50 Bottom Of Top Packer
Packer	4.00			4286.00	
Stubb	1.00			4287.00	
Perforations	2.00			4289.00	
Change Over Sub	1.00			4290.00	
Drill Pipe	125.00			4415.00	
Recorder	0.00	8018	Inside	4415.00	
Recorder	0.00	6751	Outside	4415.00	
change Over Sub	1.00			4416.00	
Bullnose	3.00			4419.00	133.00 Bottom Packers & Anchor
<b>Total Tool Length:</b>	<b>160.50</b>				



**TRILOBITE  
TESTING, INC.**

**DRILL STEM TEST REPORT**

**FLUID SUMMARY**

Stelbar Oil Corporation

**S21-15-33 Logan, KS**

1625 N Waterfront Pkw y.  
Wichita, KS 67206-6602

**LPR #1-21**

Job Ticket: 48937

**DST#: 5**

ATTN: David Goldak

Test Start: 2012.07.20 @ 14:17:21

**Mud and Cushion Information**

Mud Type: Gel Chem

Cushion Type:

Oil API:

deg API

Mud Weight: 9.00 lb/gal

Cushion Length:

ft

Water Salinity:

ppm

Viscosity: 52.00 sec/qt

Cushion Volume:

bbl

Water Loss: 11.92 in<sup>3</sup>

Gas Cushion Type:

Resistivity: ohm.m

Gas Cushion Pressure:

psig

Salinity: 10000.00 ppm

Filter Cake: 1.00 inches

**Recovery Information**

Recovery Table

Length ft	Description	Volume bbl
50.00	98%Mud 2%Oil	0.701

Total Length: 50.00 ft

Total Volume: 0.701 bbl

Num Fluid Samples: 0

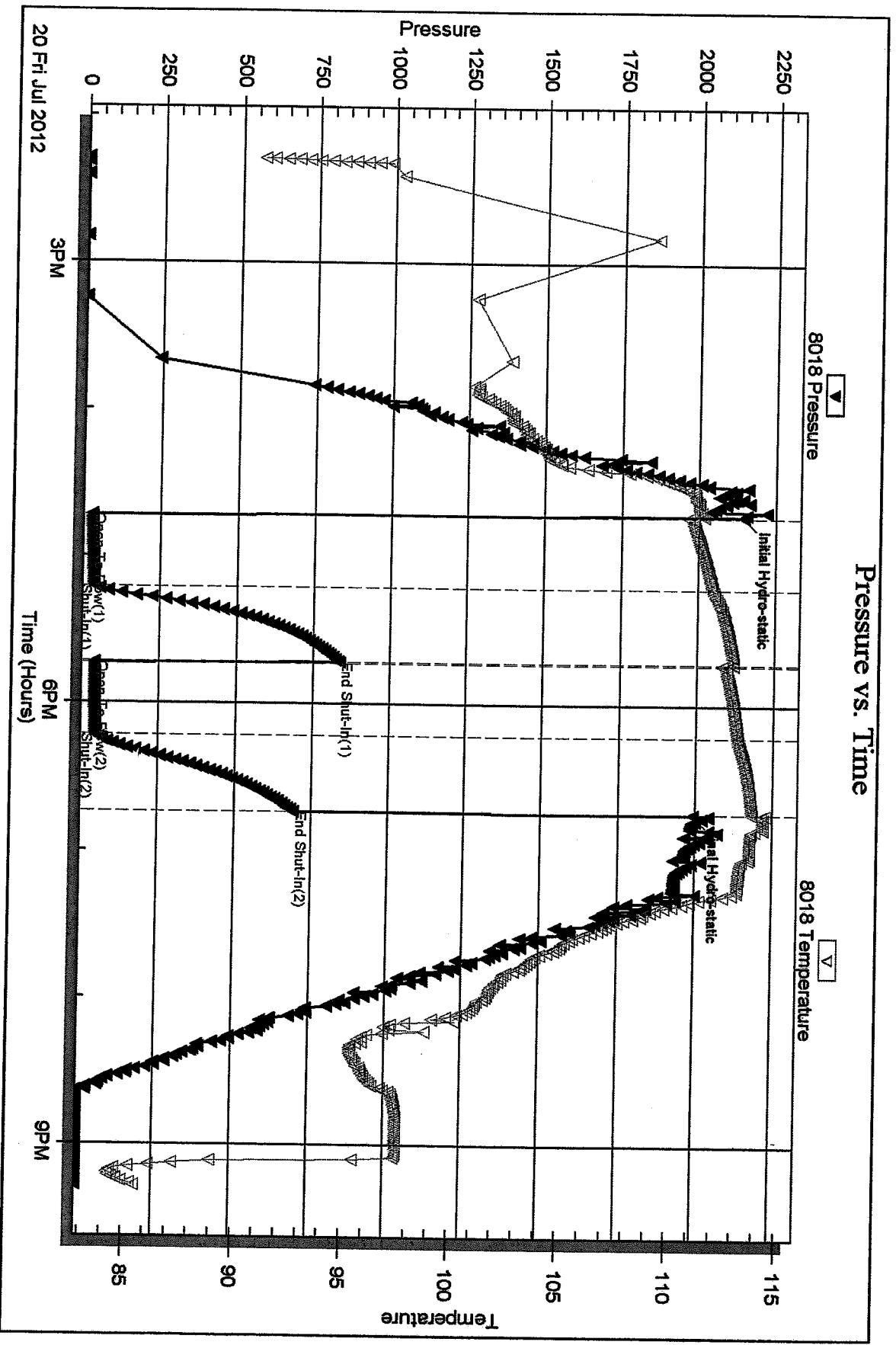
Num Gas Bombs: 0

Serial #:

Laboratory Name:

Laboratory Location:

Recovery Comments:

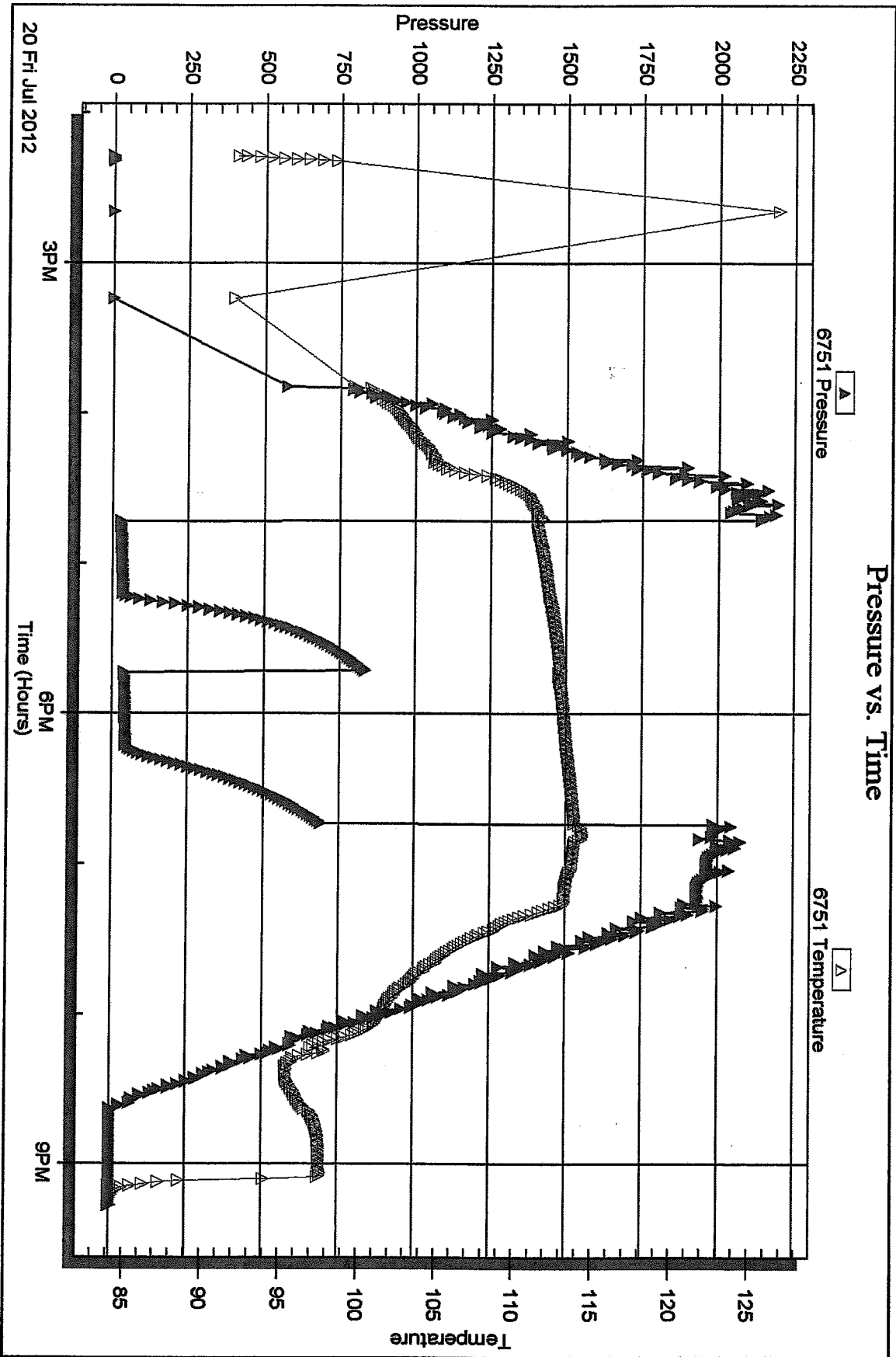


Serial #: 6751

Outside Selbar Oil Corporation

LPR#4-21

DST Test Number: 5



20 Fri Jul 2012

3PM

6PM

9PM