



DRILL STEM TEST REPORT

Prepared For: **RJM Oil Co.**

Po Box 256 Claflin Kansas
67525

ATTN: Josh Austin

Vendetti #1

3-18s-13wBarton

Start Date: 2012.07.23 @ 12:42:00

End Date: 2012.07.23 @ 19:37:30

Job Ticket #: 17311 DST #: 1

Superior Testers Enterprises LLC
PO Box 138 Great Bend KS 67530
1-800-792-6902

Printed: 2012.07.23 @ 18:22:09



DRILL STEM TEST REPORT

RJM Oil Co.
 Po Box 256 Claflin Kansas
 67525
 ATTN: Josh Austin

3-18s-13wBarton
Vendetti #1
 Job Ticket: 17311 **DST#: 1**
 Test Start: 2012.07.23 @ 12:42:00

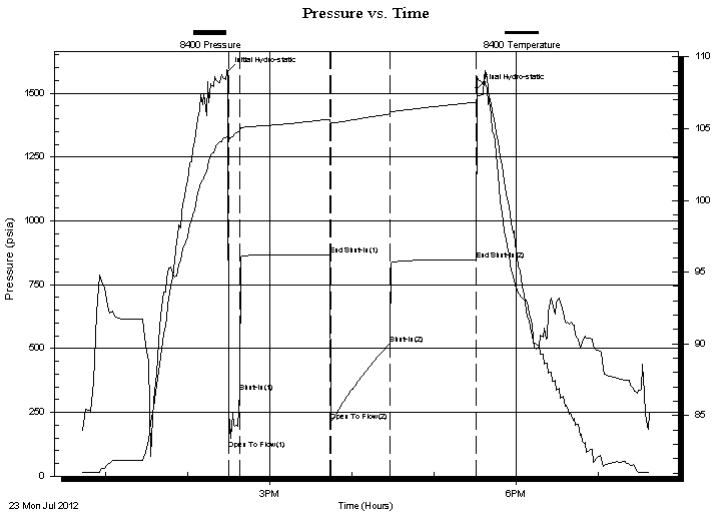
GENERAL INFORMATION:

Formation: **Arbuckle**
 Deviated: No Whipstock: ft (KB)
 Test Type: Conventional Bottom Hole (Initial)
 Time Tool Opened: 14:29:30 Tester: Dustin Ellis
 Time Test Ended: 19:37:30 Unit No: 3315-Great Bend-20
 Interval: **3052.00 ft (KB) To 3140.00 ft (KB) (TVD)** Reference Elevations: 1815.00 ft (KB)
 Total Depth: 3140.00 ft (KB) (TVD) 1808.00 ft (CF)
 Hole Diameter: 7.88 inches Hole Condition: Fair KB to GR/CF: 7.00 ft

Serial #: 8400 Outside
 Press @ RunDepth: 518.67 psia @ 3137.33 ft (KB) Capacity: 5000.00 psia
 Start Date: 2012.07.23 End Date: 2012.07.23 Last Calib.: 2012.07.23
 Start Time: 12:42:00 End Time: 19:37:30 Time On Btm: 2012.07.23 @ 14:29:00
 Time Off Btm: 2012.07.23 @ 17:31:00

TEST COMMENT: 1st Open 30 minutes Fair building blow blew bottom bucket 6 minutes
 1st Shut in 45 minutes No blow back
 2nd Open 45 minutes Fair building blow blew bottom bucket 6 minutes
 2nd Shut in 60 minutes No blow back

PRESSURE SUMMARY



Time (Min.)	Pressure (psia)	Temp (deg F)	Annotation
0	1586.26	104.53	Initial Hydro-static
1	106.86	104.05	Open To Flow (1)
9	330.78	104.79	Shut-In(1)
75	866.72	105.66	End Shut-In(1)
76	216.01	105.34	Open To Flow (2)
119	518.67	106.02	Shut-In(2)
182	847.55	106.84	End Shut-In(2)
182	1518.79	107.06	Final Hydro-static

Recovery

Length (ft)	Description	Volume (bbl)
122.00	Slightly oil cut mud	1.71
0.00	Oil 1% 99% Mud	0.00
183.00	Oil pluse w ater cut gassy mud	2.57
0.00	10% gas 5% Oil 15% mud 70% w ater	0.00
255.00	Oil cut muddy w ater	3.58
0.00	20% oil 10% mud 70% w ater	0.00

Gas Rates

Choke (inches)	Pressure (psia)	Gas Rate (Mcf/d)



DRILL STEM TEST REPORT

RJM Oil Co.
 Po Box 256 Claflin Kansas
 67525
 ATTN: Josh Austin

3-18s-13wBarton
Vendetti #1
 Job Ticket: 17311 **DST#: 1**
 Test Start: 2012.07.23 @ 12:42:00

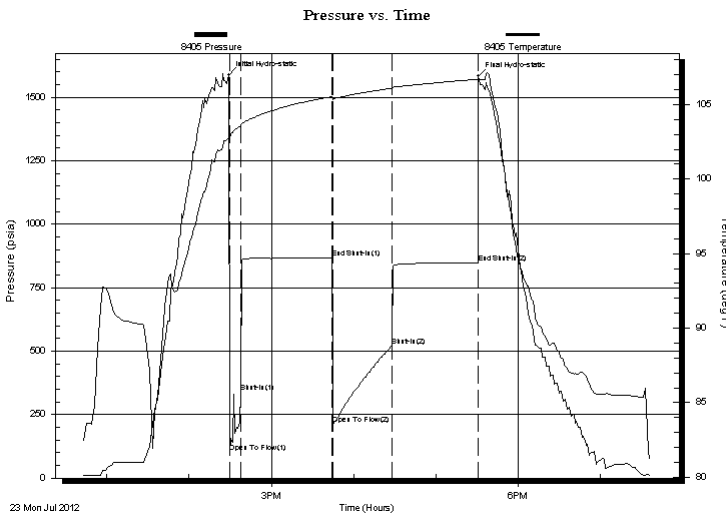
GENERAL INFORMATION:

Formation: **Arbuckle**
 Deviated: No Whipstock: ft (KB)
 Time Tool Opened: 14:29:30
 Time Test Ended: 19:37:30
 Test Type: Conventional Bottom Hole (Initial)
 Tester: Dustin Ellis
 Unit No: 3315-Great Bend-20
 Interval: **3052.00 ft (KB) To 3140.00 ft (KB) (TVD)**
 Reference Elevations: 1815.00 ft (KB)
 Total Depth: 3140.00 ft (KB) (TVD) 1808.00 ft (CF)
 Hole Diameter: 7.88 inches Hole Condition: Fair KB to GR/CF: 7.00 ft

Serial #: 8405 Inside
 Press @ RunDepth: 848.93 psia @ 3136.33 ft (KB) Capacity: 5000.00 psia
 Start Date: 2012.07.23 End Date: 2012.07.23 Last Calib.: 2012.07.23
 Start Time: 12:42:00 End Time: 19:37:00 Time On Btm: 2012.07.23 @ 14:29:00
 Time Off Btm: 2012.07.23 @ 17:31:00

TEST COMMENT: 1st Open 30 minutes Fair building blow blew bottom bucket 6 minutes
 1st Shut in 45 minutes No blow back
 2nd Open 45 minutes Fair building blow blew bottom bucket 6 minutes
 2nd Shut in 60 minutes No blow back

PRESSURE SUMMARY



Time (Min.)	Pressure (psia)	Temp (deg F)	Annotation
0	1586.68	103.08	Initial Hydro-static
1	100.01	102.70	Open To Flow (1)
9	337.59	103.61	Shut-In(1)
75	867.30	105.53	End Shut-In(1)
76	214.43	105.43	Open To Flow (2)
119	520.91	106.09	Shut-In(2)
182	848.93	106.70	End Shut-In(2)
182	1582.06	106.83	Final Hydro-static

Recovery

Length (ft)	Description	Volume (bbl)
122.00	Slightly oil cut mud	1.71
0.00	Oil 1% 99% Mud	0.00
183.00	Oil pluse w ater cut gassy mud	2.57
0.00	10% gas 5% Oil 15% mud 70% w ater	0.00
255.00	Oil cut muddy w ater	3.58
0.00	20% oil 10% mud 70% w ater	0.00

Gas Rates

	Choke (inches)	Pressure (psia)	Gas Rate (Mcf/d)



DRILL STEM TEST REPORT

TOOL DIAGRAM

RJM Oil Co.
 Po Box 256 Claflin Kansas
 67525
 ATTN: Josh Austin

3-18s-13wBarton
Vendetti #1
 Job Ticket: 17311 **DST#: 1**
 Test Start: 2012.07.23 @ 12:42:00

Tool Information

Drill Pipe:	Length: 3053.00 ft	Diameter: 3.80 inches	Volume: 42.83 bbl	Tool Weight:	2000.00 lb
Heavy Wt. Pipe:	Length: 0.00 ft	Diameter: 0.00 inches	Volume: 0.00 bbl	Weight set on Packer:	20000.00 lb
Drill Collar:	Length: 0.00 ft	Diameter: 0.00 inches	Volume: 0.00 bbl	Weight to Pull Loose:	40000.00 lb
			<u>Total Volume: 42.83 bbl</u>	Tool Chased	0.00 ft
Drill Pipe Above KB:	21.00 ft			String Weight: Initial	34000.00 lb
Depth to Top Packer:	3052.00 ft			Final	35000.00 lb
Depth to Bottom Packer:	ft				
Interval between Packers:	88.33 ft				
Tool Length:	108.33 ft				
Number of Packers:	2	Diameter: 6.75 inches			

Tool Comments:

Tool Description	Length (ft)	Serial No.	Position	Depth (ft)	Accum. Lengths
-------------------------	--------------------	-------------------	-----------------	-------------------	-----------------------

Shut-In Tool	5.00			3037.00	
Hydraulic Tool	5.00			3042.00	
Packer	5.00			3047.00	20.00 Bottom Of Top Packer
Packer	5.00			3052.00	
Anchor	10.00			3062.00	
Change Over Sub	0.75			3062.75	
Drill Pipe	61.83			3124.58	
Change Over Sub	0.75			3125.33	
Anchor	10.00			3135.33	
Recorder	1.00	8405	Inside	3136.33	
Recorder	1.00	8400	Outside	3137.33	
Bull Plug	3.00			3140.33	88.33 Bottom Packers & Anchor

Total Tool Length: 108.33



DRILL STEM TEST REPORT

FLUID SUMMARY

RJM Oil Co.
 Po Box 256 Claflin Kansas
 67525
 ATTN: Josh Austin

3-18s-13wBarton
Vendetti #1
 Job Ticket: 17311 **DST#: 1**
 Test Start: 2012.07.23 @ 12:42:00

Mud and Cushion Information

Mud Type: Gel Chem	Cushion Type:	Oil API:	deg API
Mud Weight: 9.00 lb/gal	Cushion Length: ft	Water Salinity:	ppm
Viscosity: 58.00 sec/qt	Cushion Volume: bbl		
Water Loss: 10.40 in ³	Gas Cushion Type:		
Resistivity: 0.10 ohm.m	Gas Cushion Pressure: psia		
Salinity: 7000.00 ppm			
Filter Cake: 1.00 inches			

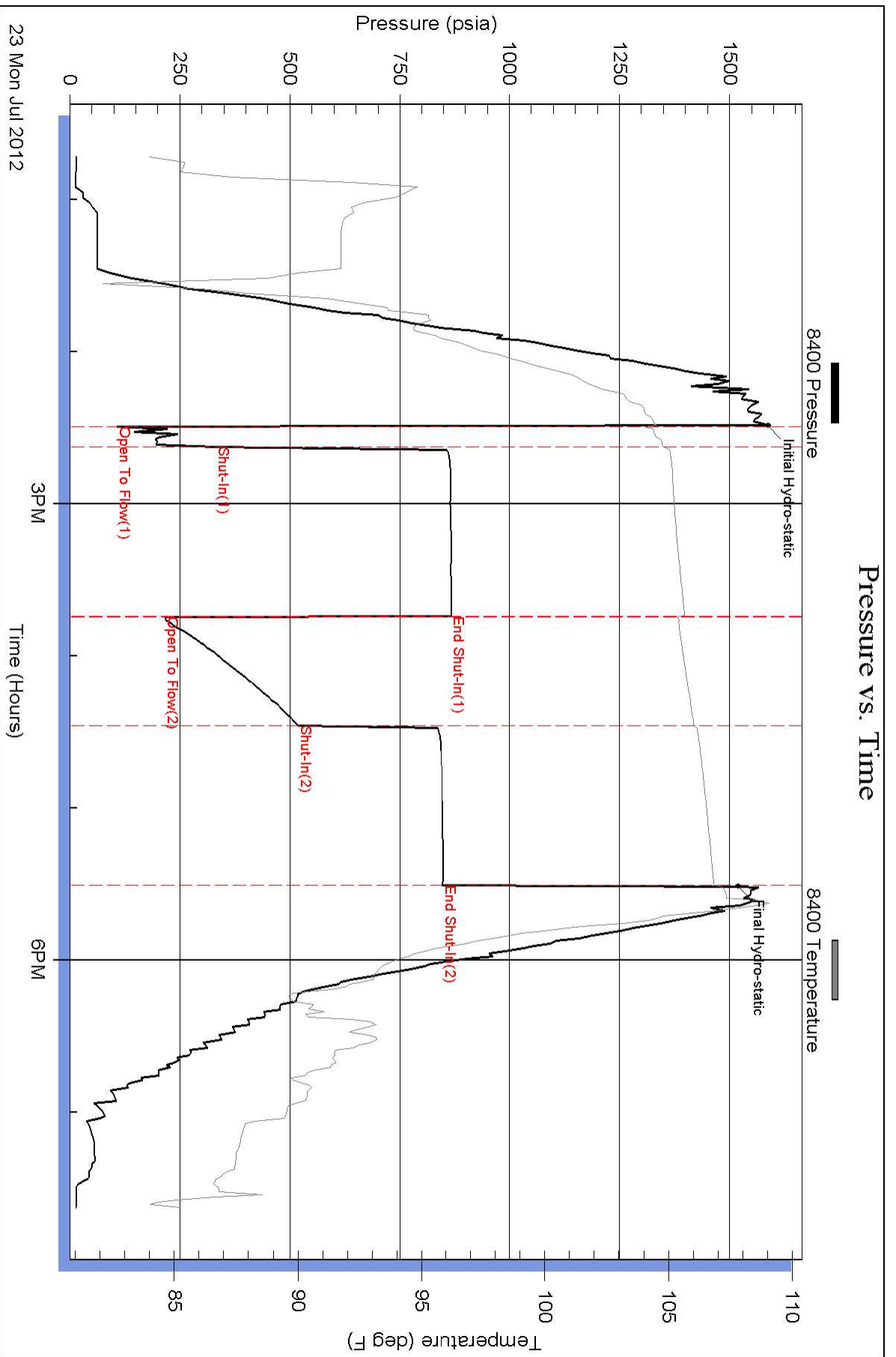
Recovery Information

Recovery Table

Length ft	Description	Volume bbl
122.00	Slightly oil cut mud	1.711
0.00	Oil1%99%Mud	0.000
183.00	Oil pluse w ater cut gassy mud	2.567
0.00	10% gas 5%Oil15%mud 70%w ater	0.000
255.00	Oil cut muddy w ater	3.577
0.00	20%oil10%mud70%w ater	0.000
142.00	Oil & Gas cut w ater 30%gas20%oil50%w ate	1.992
122.00	Slightly oil cut mud 1%oil99%mudd	1.711
122.00	Water 100%	1.711
0.00	Chlorides 59,000 .1 ohms @56Degrees	0.000

Total Length: 946.00 ft Total Volume: 13.269 bbl
 Num Fluid Samples: 0 Num Gas Bombs: 0 Serial #:
 Laboratory Name: Laboratory Location:
 Recovery Comments:

Pressure vs. Time



Pressure vs. Time

