



TRILOBITE TESTING, INC.

DRILL STEM TEST REPORT

Shakespeare Oil Co. Inc

16-14s-32w Logan,KS

202 W. Main St.
Salem IL 62881

Ottley # 3-16

Job Ticket: 48827

DST#: 1

ATTN: Tim Priest

Test Start: 2012.08.21 @ 10:56:05

GENERAL INFORMATION:

Formation: **LKC " B "**

Deviated: No Whipstock: ft (KB)

Time Tool Opened: 12:24:30

Time Test Ended: 18:05:14

Test Type: Conventional Bottom Hole (Initial)

Tester: Will MacLean

Unit No: 40

Interval: 3783.00 ft (KB) To 3820.00 ft (KB) (TVD)

Reference Elevations: 2773.00 ft (KB)

Total Depth: 3820.00 ft (KB) (TVD)

2763.00 ft (CF)

Hole Diameter: 7.88 inches Hole Condition: Good

KB to GR/CF: 10.00 ft

Serial #: 8360

Inside

Press @ Run Depth: 260.24 psig @ 3784.00 ft (KB)

Capacity: 8000.00 psig

Start Date: 2012.08.21

End Date:

2012.08.21

Last Calib.:

2012.08.21

Start Time: 10:56:05

End Time:

18:05:14

Time On Btm:

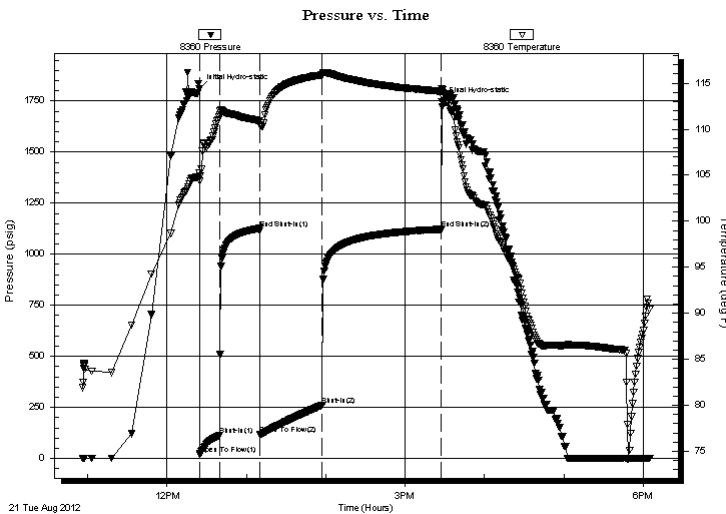
2012.08.21 @ 12:24:15

Time Off Btm:

2012.08.21 @ 15:27:29

TEST COMMENT: IF- Surface Blow Built to BOB in 9min
IS- No Blow
FF- Surface Blow Built to BOB in 10min
FS- No Blow

PRESSURE SUMMARY



Time (Min.)	Pressure (psig)	Temp (deg F)	Annotation
0	1811.85	105.29	Initial Hydro-static
1	18.45	104.34	Open To Flow (1)
16	113.53	111.58	Shut-In(1)
46	1126.13	110.95	End Shut-In(1)
46	116.58	110.45	Open To Flow (2)
93	260.24	115.88	Shut-In(2)
183	1122.47	114.12	End Shut-In(2)
184	1747.36	114.43	Final Hydro-static

Recovery

Length (ft)	Description	Volume (bbl)
240.00	MCW 7%w 93%w	1.98
180.00	MCW 15%w 85%w	2.52
110.00	WCM 32%w 68%w with Few Oil Spots	1.54

Gas Rates

Choke (inches)	Pressure (psig)	Gas Rate (Mcf/d)



**TRILOBITE
TESTING, INC.**

DRILL STEM TEST REPORT

FLUID SUMMARY

Shakespeare Oil Co. Inc

16-14s-32w Logan,KS

202 W. Main St.
Salem IL 62881

Ottley # 3-16

Job Ticket: 48827

DST#: 1

ATTN: Tim Priest

Test Start: 2012.08.21 @ 10:56:05

Mud and Cushion Information

Mud Type: Gel Chem

Cushion Type:

Oil API:

deg API

Mud Weight: 9.00 lb/gal

Cushion Length:

ft

Water Salinity:

33000 ppm

Viscosity: 52.00 sec/qt

Cushion Volume:

bbbl

Water Loss: 8.76 in³

Gas Cushion Type:

Resistivity: ohm.m

Gas Cushion Pressure:

psig

Salinity: 4000.00 ppm

Filter Cake: 1.00 inches

Recovery Information

Recovery Table

Length ft	Description	Volume bbbl
240.00	MCW 7% _m 93% _w	1.982
180.00	MCW 15% _m 85% _w	2.525
110.00	WCM 32% _w 68% _m with Few Oil Spots	1.543

Total Length: 530.00 ft Total Volume: 6.050 bbl

Num Fluid Samples: 0

Num Gas Bombs: 0

Serial #:

Laboratory Name:

Laboratory Location:

Recovery Comments: RW is .178 @ 98f = 33000

Serial #: 8360

Inside

Shakespeare Oil Co. Inc

Oilley # 3-16

DST Test Number: 1

